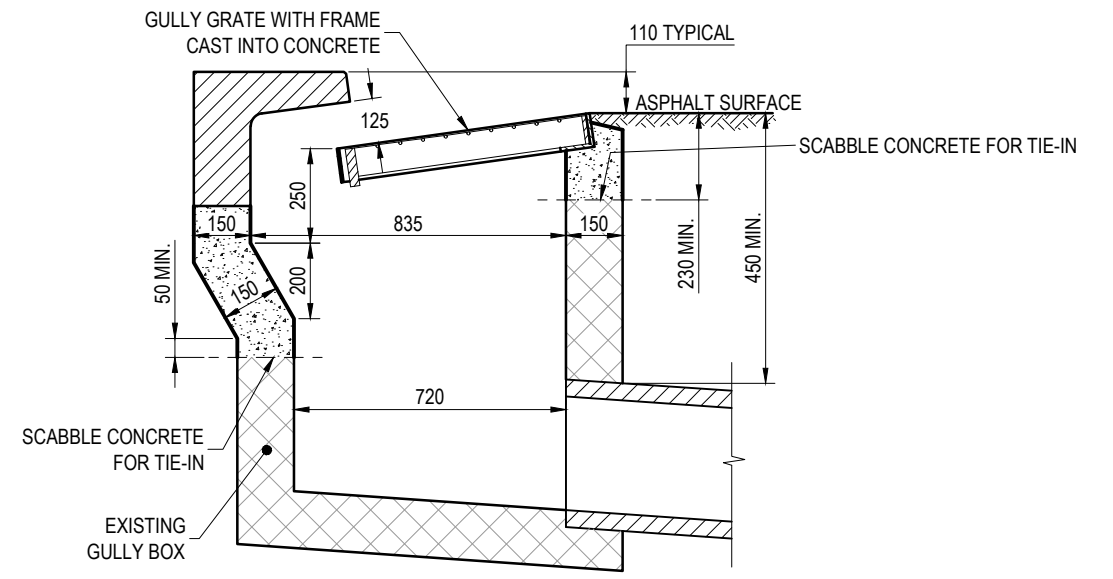
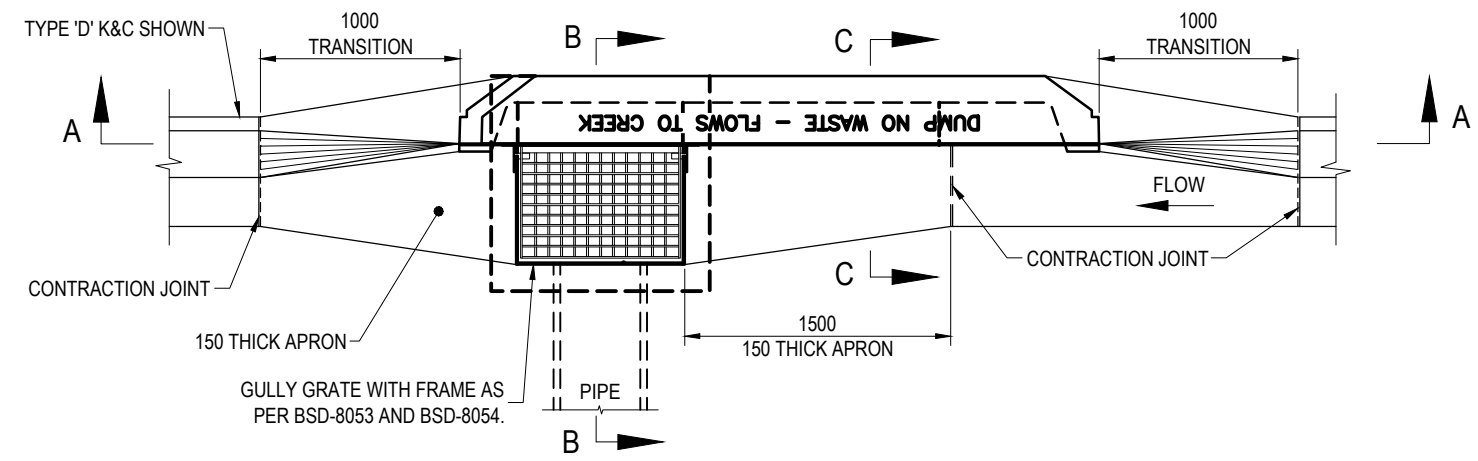


SECTION A-A



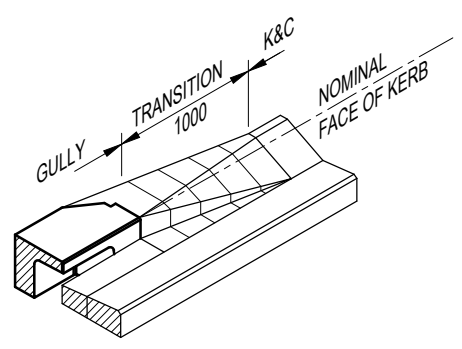
SECTION - GULLY RECONSTRUCTION



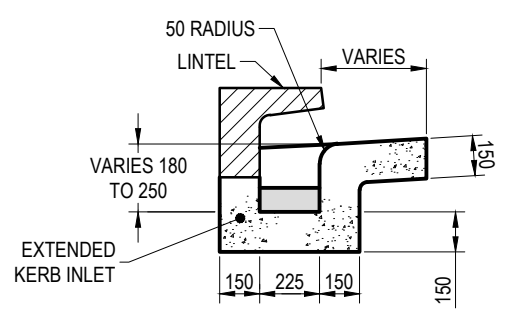
PLAN

NOTE:- FOR SAG GULLY, APRON TO EXTEND TO END OF LINTEL AND GULLY TO BE LOCATED IN CENTRE OF LINTEL.

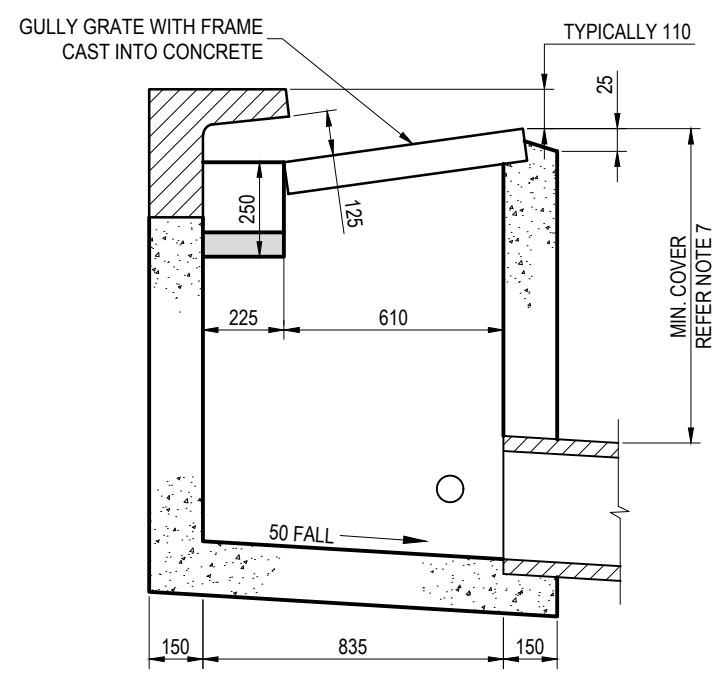
TYPICAL INLET ON GRADE



TRANSITION TO K&C
TYPE 'D' K&C SHOWN



SECTION C-C
(THROUGH LINTEL & EXTENDED KERB INLET)



SECTION B-B

NOTES:

- ALL CONCRETE TO BE GRADE N25.
- COVER TO ALL BARS TO BE 40 MIN.
- REINFORCEMENT STEEL TO CONFORM TO AS 1302.
- REFER BSD-8055 FOR LINTEL DETAILS.
- CAST INSITU CONCRETE N25 TO AS 1379 AND AS 3600.
- REFER BSD-8053 AND BSD-8054 FOR GULLY GRATE AND FRAME DETAILS.
- UNLESS APPROVED OTHERWISE BY COUNCIL DELEGATE, LIMIT DEPTH OF GULLY TO 1.35m.
- GULLIES DEEPER THAN 1.35m TO BE EITHER:
 - INDIVIDUALLY DESIGNED AND CERTIFIED BY AN RPEQ, OR
 - DESIGNED AND CONSTRUCTED TO DTMR STANDARD DRAWING No. 1312
- INSTALL STEP IRONS TO GULLIES GREATER THAN 1.20m DEEP IN ACCORDANCE WITH AS1657.
- REFER TO BSD-2042 (ROADWAYS) AND BSD-2043 (PATHS AND VERGES) FOR MINIMUM COVER REQUIREMENTS. MIN. 450mm IN OTHER AREAS.
- DIMENSIONS IN MILLIMETRES (UNO).

ISSUE	AMENDMENT	DRAWN DATE	CHK'D DATE	APPR'D DATE
C	Note 7 & Min Cover on Section B-B Update, Notes 8 & 9 Added	APR '18	AUG '18	NOV '18
B	Benching Added to Gully Trough	DEC '15	JUL '16	JUL '16
A	Drawing Converted from UMS Series April 2014	Apr '14	Apr '14	Apr '14

DRAWING AUTHORISED FOR PUBLICATION
 Inga Condric 2014.04.15 10:40:47 +10'00"
 for ASSET ENGINEERING MANAGER
 STRATEGIC ASSET MANAGEMENT
DESIGN APPROVED
 Inga Condric 2015.04.15 10:40:22 +10'00"
 PRINCIPAL ENGINEER
 STRATEGIC ASSET MANAGEMENT PLANNING

DESIGN	STD DWG GROUP	DATE	April '01
DRAWN	CITY DESIGN	DATE	April '01
CHECKED	M.STEER	DATE	May '01
DRAWING FILENAME	BSD-8052 (B) Type 'A' gully kerb in line.dwg		
ASSOCIATED PLANS	SUPERSEDES UMS-331		



BRISBANE CITY COUNCIL STANDARD DRAWING

TYPE 'A' GULLY KERB IN LINE

SCALE: NOT TO SCALE

DWG No. BSD-8052

ORIGINAL SIZE: A3 REVISION: C