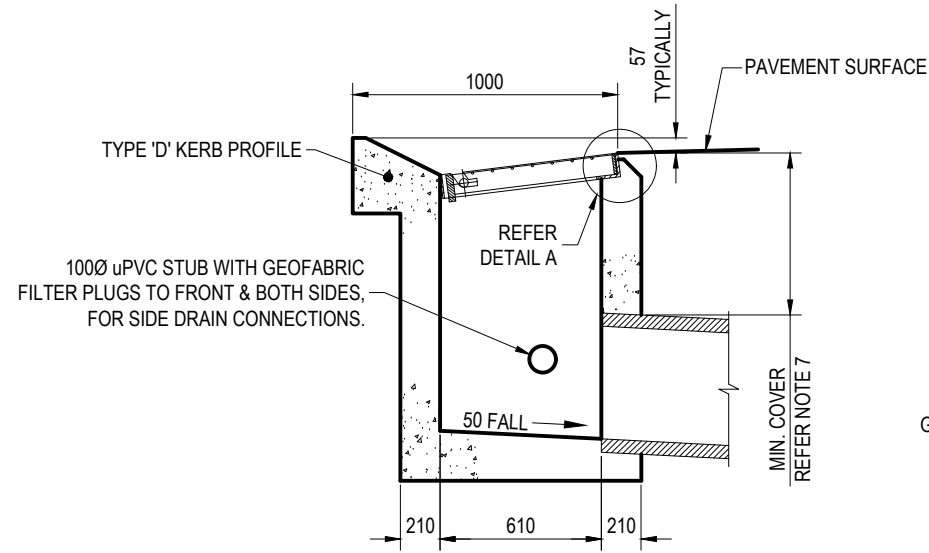
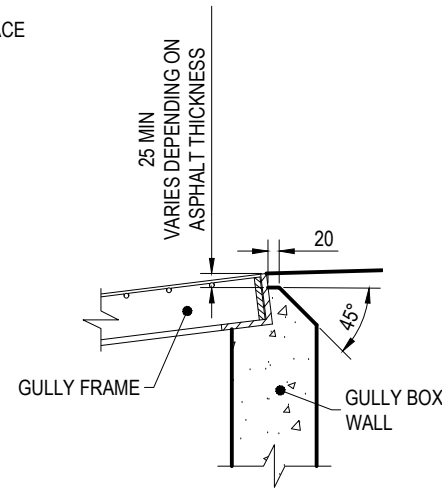


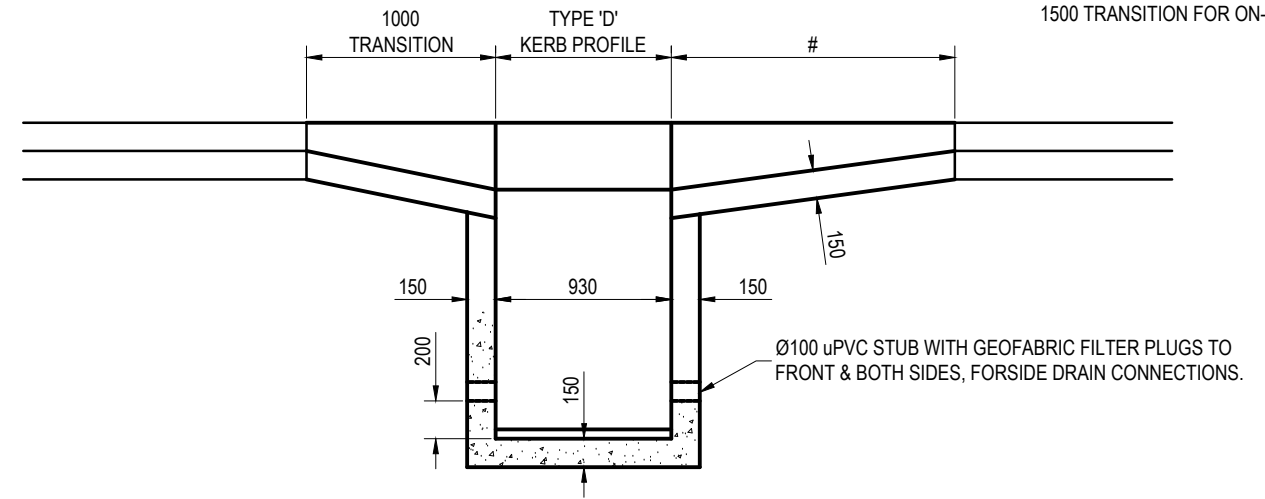
1000 TRANSITION FOR SAG LOCATION
1500 TRANSITION FOR ON-GRADE LOCATION



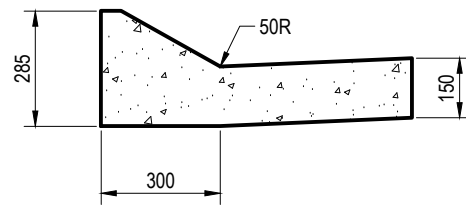
SECTION B-B



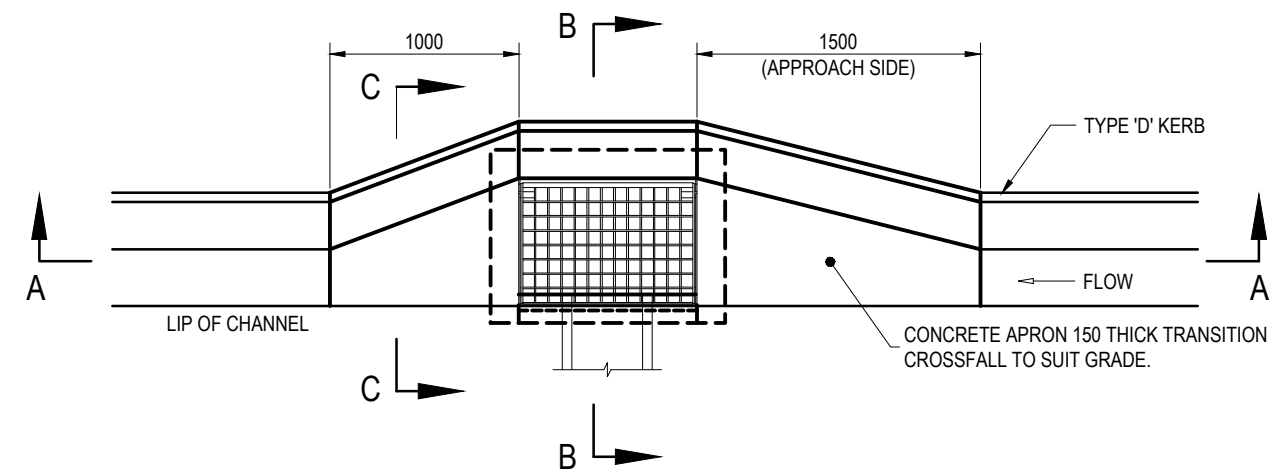
DETAIL A



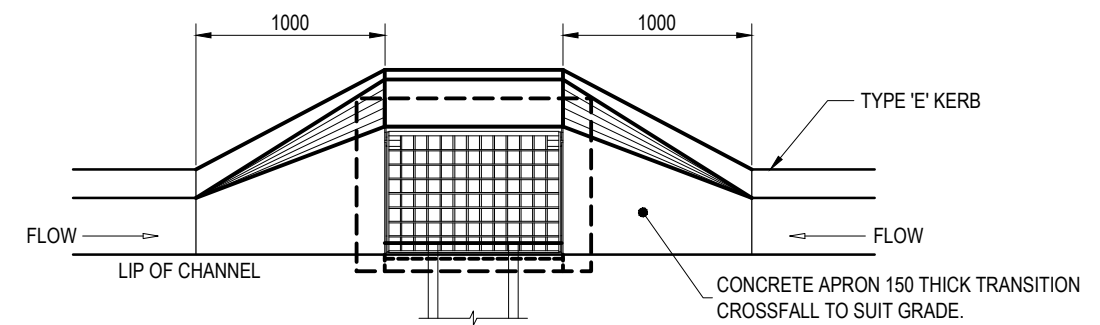
SECTION A-A



SECTION C-C



TYPICAL INLET ON GRADE



TYPICAL INLET IN SAG

NOTES:

- REFER BSD-2001 FOR KERB PROFILE DETAILS.
- CAST IN-SITU CONCRETE N25 TO AS 1379 AND AS 3600.
- REFER BSD-8053 & BSD-8054 FOR GULLY GRATE AND FRAME DETAILS.
- CAPTURE IN THIS GULLY NOT TO BE INCLUDED IN HYDRAULIC CALCULATIONS. THIS GULLY ONLY TO BE USED FOR DRAINING CARRIAGEWAY.
- UNLESS APPROVED OTHERWISE BY COUNCIL DELEGATE, LIMIT DEPTH OF GULLY TO 1.35m.
- GULLIES DEEPER THAN 1.35m TO BE EITHER:
 - INDIVIDUALLY DESIGNED AND CERTIFIED BY AN RPEQ, OR
 - DESIGNED AND CONSTRUCTED TO DTMR STANDARD DRAWING No. 1311
- INSTALL STEP IRONS TO GULLIES GREATER THAN 1.20m DEEP IN ACCORDANCE WITH AS1657.
- REFER TO BSD-2042 (ROADWAYS) AND BSD-2043 (PATHS AND VERGES) FOR MINIMUM COVER REQUIREMENTS. MIN. 450mm IN OTHER AREAS.
- DIMENSIONS IN MILLIMETRES (UNO).

					DRAWING AUTHORISED FOR PUBLICATION B.BALL SIGNATURE ON ORIGINAL DATED 29/06/01				DESIGN	STD DWG GROUP	DATE	APR '01	BRISBANE CITY COUNCIL STANDARD DRAWING TYPE 'A' ANTI-PONDING GULLY			SCALE NOT TO SCALE	
					MANAGER ASSET SUPPORT - R.P.E.Q: 3822				DRAWN	CITY DESIGN	DATE	APR '01				DWG No. BSD-8056	
					DESIGN APPROVED B.HANSEN SIGNATURE ON ORIGINAL DATED 27/06/01				CHECKED	M.STEER	DATE	MAY '01	ORIGINAL SIZE A3		REVISION B		
					PRINCIPAL ASSET OFFICER ROADS AND DRAINAGE				DRAWING FILENAME	BSD-8056 (B) Type 'A' anti-ponding gully.dwg			BRISBANE CITY				
ISSUE	AMENDMENT	DRAWN DATE	CHK'D DATE	APPR'D DATE					ASSOCIATED PLANS	SUPERSEDES UMS-334							
B	Notes 5, 6 & 7 Added, Min. Cover on Section B-B Added	APR '18	AUG '18	NOV '18													
A	Drawing Converted from UMS Series April 2014	APR '14	APR '14	APR '14													