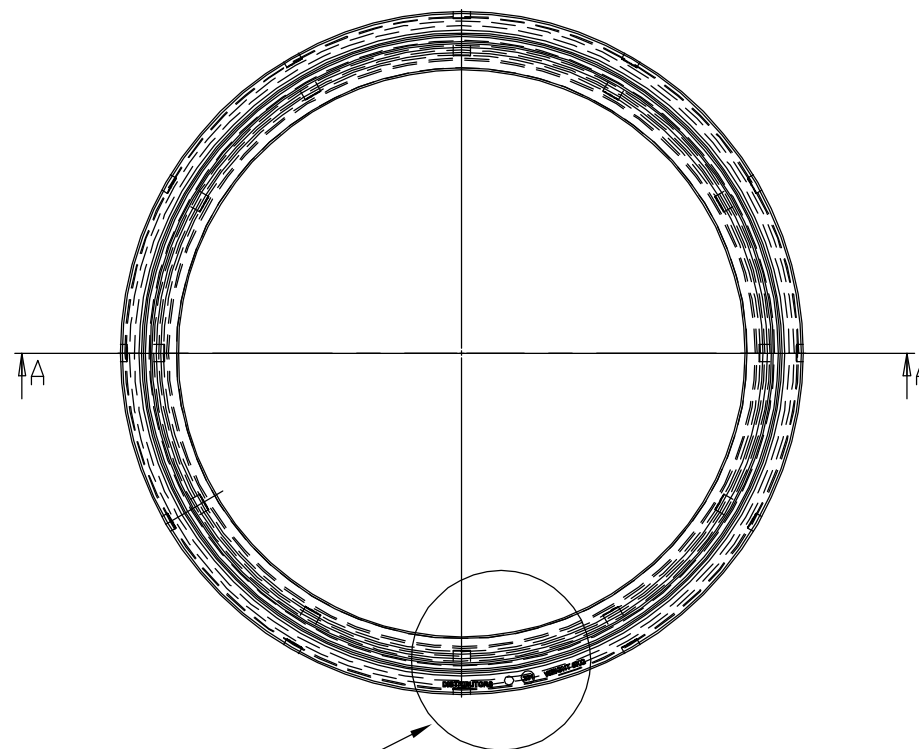
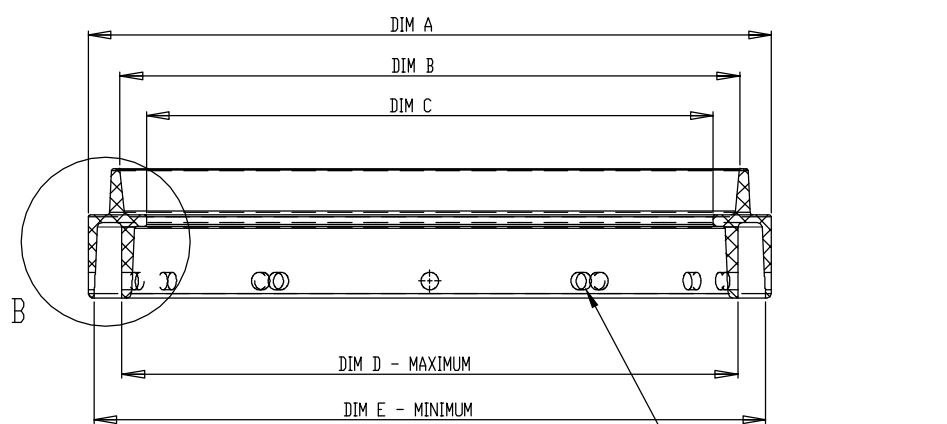


DETAIL B



Product Identification Details
PLAN VIEW



SECTION A-A

NOTES:

1. Product designed to meet requirements of the AS3996 Class B design load.
2. Collars are for circular pits that meet the requirements of DTMR standard drawing 1415.
3. The collar shall be placed on the pit prior to compaction of the backfill material to prevent elongation of the top of the pit.
4. All edges shall be free of flash and sharp edges.
5. 12 galvanised cuphead M16 bolts with washers to fit shall be supplied fitted to each collar. All nuts are to be galvanised and secured to the bolts on the outside of the collar/
6. A permanent moulded in identification label shall state "Manufacturers Name", "Date of manufacture", "Manufacturing batch no." and "weight of product".
7. Material - Polypropylene - High UV stabilised.
8. Dimensions are in millimeters unless otherwise stated.

REFERENCED DOCUMENTS

Australian Standards:
AS 3996 Metal Access Covers, Road Grates and Frames

DIM	
A	ø 725
B	ø 656±2
C	ø 600±2
D	ø 655
E	ø 708

ISSUE	AMENDMENT	DRAWN DATE	CHK'D DATE	APPR'D DATE
B	Dimensions Corrected	JUL '16	JUL '16	JUL '16
A	ORIGINAL ISSUE	FEB '15	FEB '15	MAR '15

DRAWING AUTHORISED FOR PUBLICATION			
I. Condric Signature on Original			
ASSET ENGINEERING MANAGER STRATEGIC ASSET MANAGEMENT			
DESIGN APPROVED			
C. CALOS			
SENIOR TRAFFIC SYSTEMS ENGINEER CONGESTION REDUCTION UNIT			
DESIGN	RE	DATE	5.02.15
DRAWN	BW	DATE	5.02.15
CHECKED	CC	DATE	5.02.15
DRAWING FILENAME	BSD-4032.DWG		
ASSOCIATED PLANS			



BRISBANE CITY COUNCIL STANDARD DRAWING

CIRCULAR CABLE JOINTING PIT
600mm DIAMETER
COLLAR

SCALE NOT TO SCALE	
DWG No. BSD-4032	
ORIGINAL SIZE A3	REVISION B