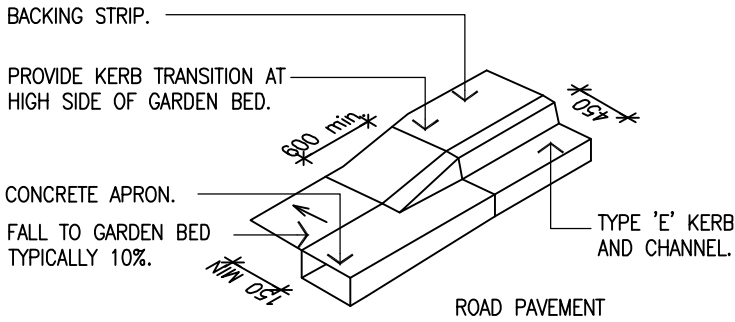


SERVICES LEGEND

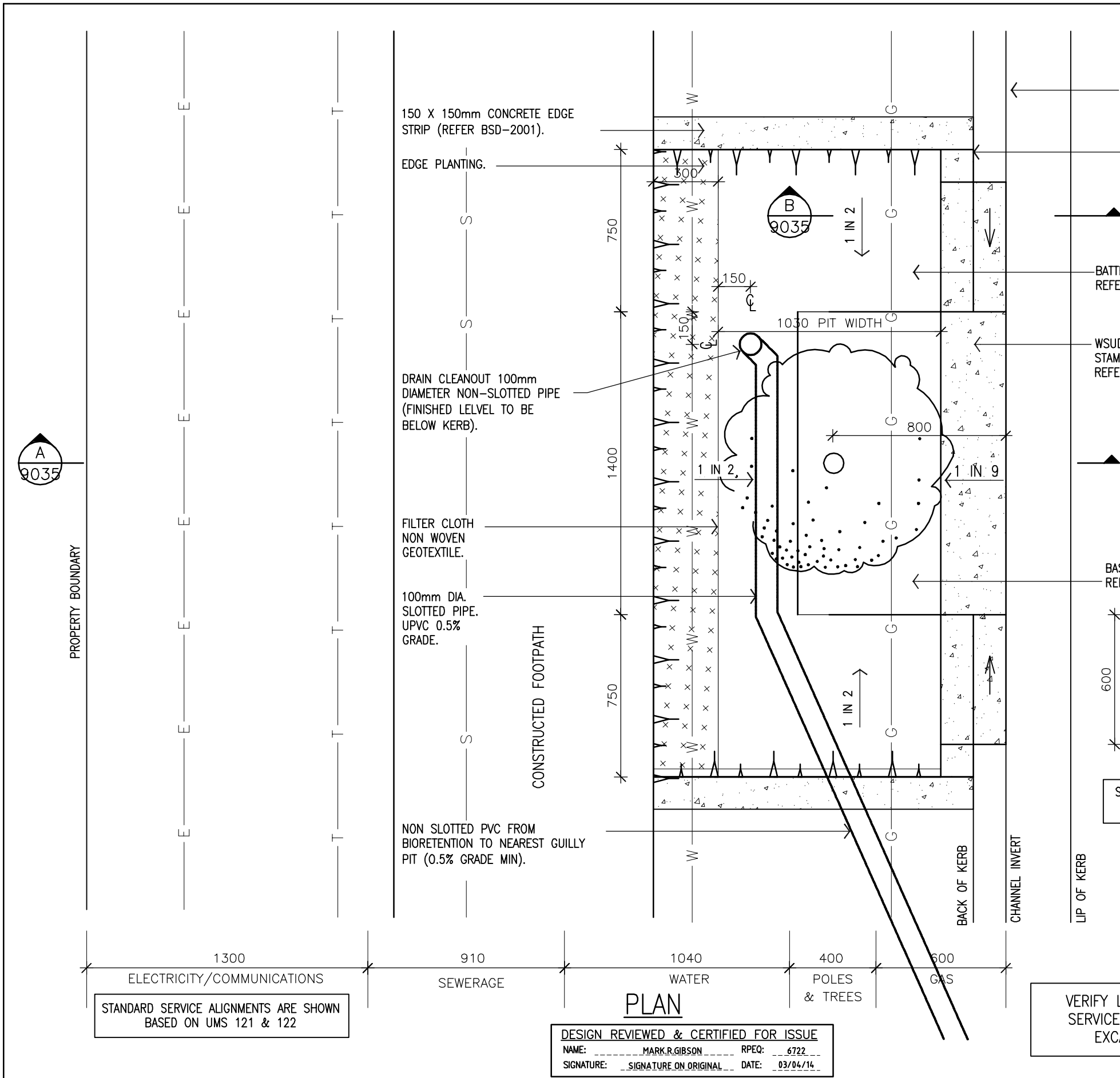
— S —	SEWERAGE
— T —	TELECOMMUNICATIONS
— G —	GAS
— W —	WATER MAIN
— E —	ELECTRICITY
→	DENOTES SLOPE DOWN



NOTES

- THIS PLAN IS TO BE READ IN CONJUNCTION WITH BSD 9035.
- DETAIL TO BE INCORPORATED IN DEVELOPMENTS WHERE SERVICES/PERMITS/GRADES ENABLE THE CONSTRUCTION OF THE TREE PIT AND WHERE THE UNDER-DRAIN CAN BE DRAINED TO A STORMWATER PIT.
- REFER TO BSD-9035 FOR NOTES ON FILTER MEDIA, VEGETATION, UNDER-DRAINS, FILTER CLOTH, SLOTTED PIPE, GENERAL CONSTRUCTION AND SERVICES.
- THE WSUD KERB SHOWN IS ONLY SUITABLE FOR STREET TREE PITS AND SMALL RAINGARDENS. LARGER SYSTEMS (E.G TREE TRENCHES) MAY NEED SPECIFIC INLET DESIGN OR MULTIPLE INLETS.
- TREE PITS ARE TO BE LOCATED UPSTREAM OF GULLY PITS.
- STAMP CONCRETE WITH THE FOLLOWING TEXT "THIS GARDEN FILTERS STORMWATER AND PROTECTS OUR WATERWAYS". TEXT TO BE 2 INCH HIGH AND STYLE AVENIR (SANS SERIF) OR ARIAL (SANS SERIF) IN LINE WITH BCC'S CORPORATE STYLE GUIDE.
- IF A SERVICE (IE GAS) WILL CROSS THE WSUD TREE PIT, PROVIDE A CONDUIT FOR FUTURE USE. SERVICE SIZE TO BE CONFIRMED WITH SERVICE PROVIDER.
- STEEP VERGE OR ROAD GRADES MAY LIMIT THE FEASIBILITY OF STREETSCAPE BIORETENTION.
- FOR KERB BACKING STRIP DETAILS REFER TO BSD-9035.
- CONCRETE EDGE STRIP (150 X 150mm) REQUIRED AT BACK EDGE OF DEVICE WHERE NO FOOTPATH IS PROPOSED.
- MAXIMUM LENGTH OF DEVICE IS TO BE SIZED TO ALLOW ADEQUATE SPACE FOR DRIVEWAY CROSSOVERS AND WASTE PICKUP. TYPICAL MAXIMUM LENGTH IS 3 METERS.



KERB TRANSITION DETAIL



					DESIGN AUTHORISED FOR PUBLICATION Inga Condric Authorised Original 14/04/2014 for ASSET ENGINEERING MANAGER STRATEGIC ASSET MANAGEMENT	DESIGN	CP0 – P&D	DATE	Apr '14		BRISBANE CITY COUNCIL STANDARD DRAWING			
						DRAWN	CP0 – P&D	DATE	Apr '14		<div>WSUD TREE WITHIN TURF – PLAN</div>	SCALE NOT TO SCALE		
						CHECKED	M. GIBSON	DATE	Apr '14			DWG No.	BSD-9034	
B	CLARIFICATION & IMPROVEMENT TO NOTES & DESIGN	Nov '16	Nov '16	Dec '16	DESIGN APPROVED 	DRAWING FILENAME	BSD-9034.dwg					ORIGINAL SIZE	REVISION	
A	ORIGINAL ISSUE	Apr '14	Apr '14	Apr '14		ASSOCIATED PLANS						A3	B	
ISSUE	AMENDMENT	DRAWN DATE	CHK'D DATE	APPR'D DATE	PRINCIPAL PROGRAM OFFICER NATURAL ENVIRONMENT WATER & SUSTAINABILITY									