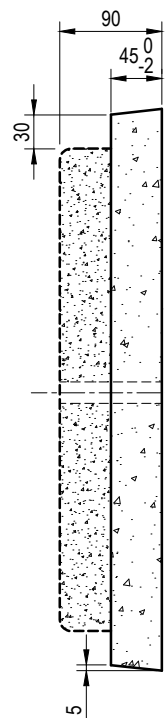
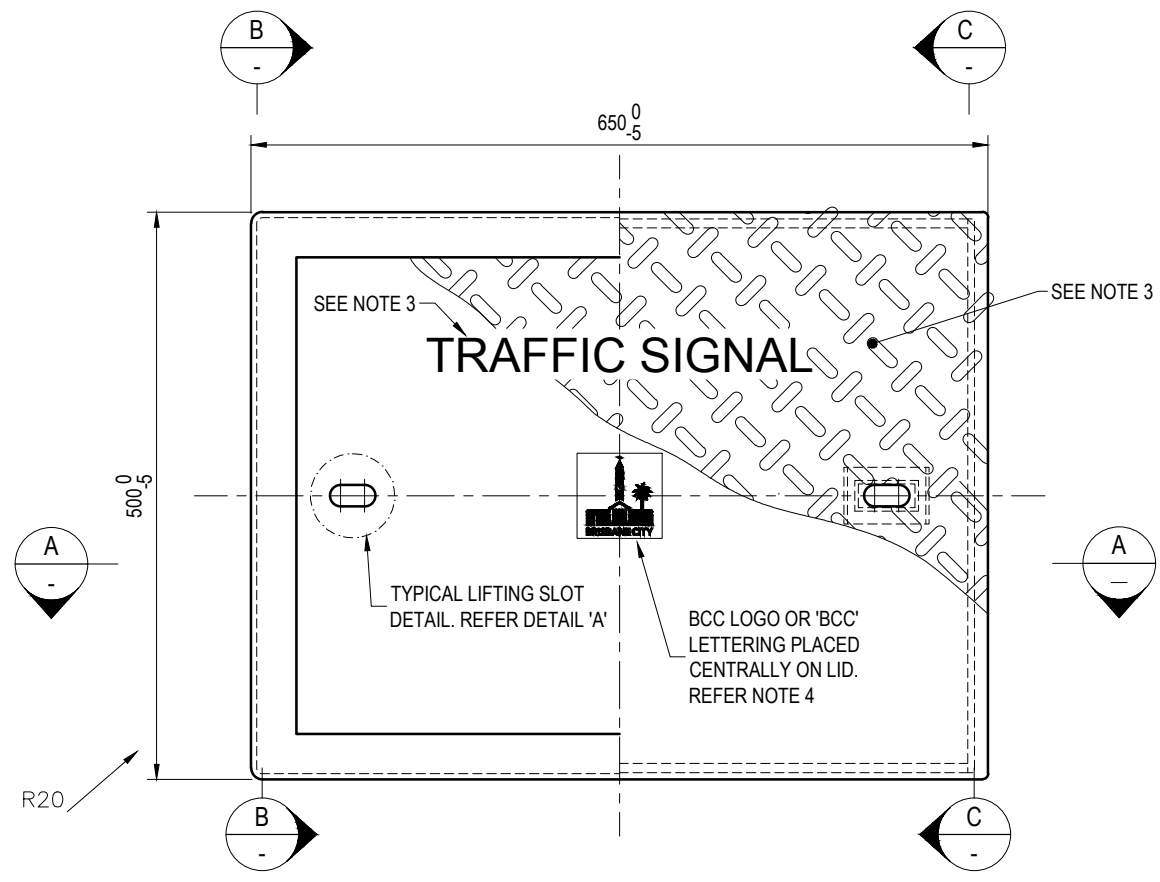


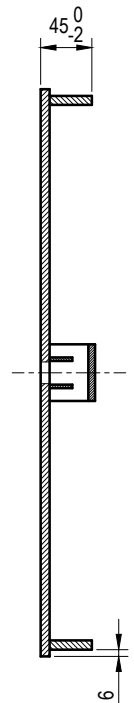
TYPICAL EXISTING PIT PLAN



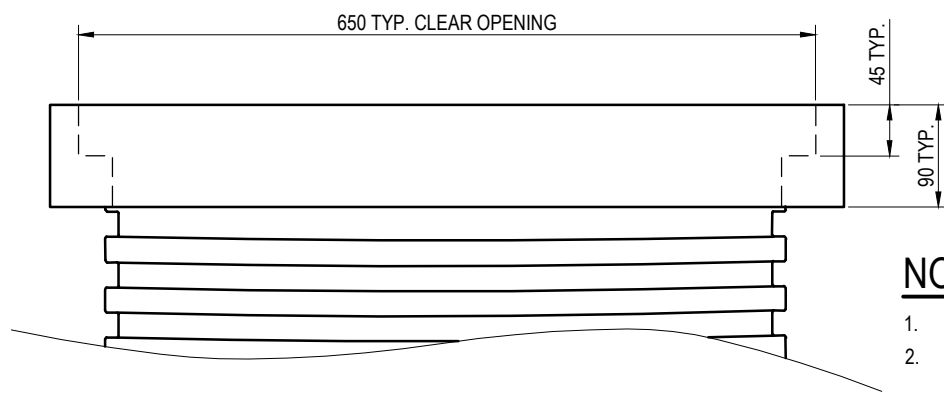
SECTION B-B
TYPICAL CONCRETE
COVER SECTION



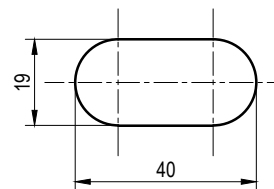
PLAN VIEW



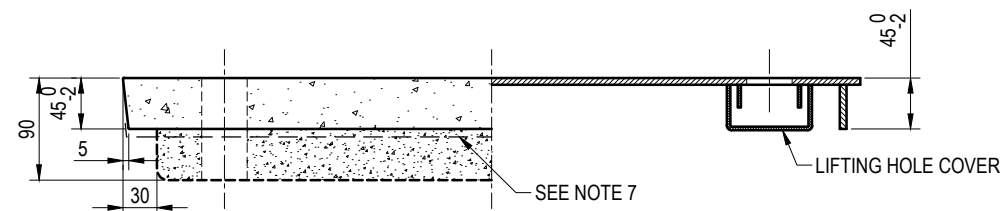
SECTION C-C
TYPICAL STEEL
COVER SECTION



TYPICAL EXISTING PIT ELEVATION



DETAIL 'A'
TYPICAL LIFTING SLOT




SECTION A-A
TYPICAL FRONT SECTION

NOTES:

- REPLACEMENT LID TO FIT EXISTING ROUND-TO-SQUARE PIT TO REPLACE EXISTING LID (AS PER SUPERSEDED DRAWING UMS 623).
- LID ONLY TO BE REPLACED ON PITS IN GOOD CONDITION. IF EXISTING PIT IS IN POOR CONDITION REMOVE EXISTING PIT AND REPLACE WITH NEW CIRCULAR PIT TO DTMR DRAWING 1415, AND ASSOCIATED COLLAR AND COVER TO BSD-4032 AND BSD-4033.
- PIT DESCRIPTION LETTERING ie. "TRAFFIC SIGNAL", "ELECTRICAL" AND "COMMUNICATIONS". TEXT MIN. 35 HIGH FOR ALL COVERS.
- ALL NEW LIDS TO HAVE 100 SQ BCC LOGO OR 100 HIGH 'BCC' LETTERING PERMANENTLY MARKED ON TOP OF COVER.
- NON-SLIP FINISH TO BE APPLIED TO TOP SURFACE OF LID.
- ALL CORNER RADII TO BE 20mm, UNLESS SHOWN OTHERWISE.
- PIT LID MATERIAL MAY BE, BUT NOT LIMITED TO, GALVANISED STEEL PLATE, CAST OR DUCTILE METAL, CONCRETE, GLASS REINFORCED CONCRETE OR POLYMER CONCRETE.
- PIT LID TO BE LOAD RATED TO CLASS 'B' TO AS3996 FOR USE IN GENERAL PEDESTRIAN AREAS. FOR PITS AND LIDS IN LOCALITIES AND CENTRES SUCH AS THE CBD AND CENTRES AS DEFINED BY CHAPTER 5, INFRASTRUCTURE DESIGN PLANNING SCHEME POLICY, BRISBANE CITY PLAN 2014, PIT LIDS ARE TO BE LOAD RATED TO CLASS 'C' TO AS3996.
- THE LIFTING HOLES SHALL BE DESIGNED TO PREVENT ENTRY OF FOREIGN OBJECTS (FOR EXAMPLE SYRINGES) INTO THE PIT BUT ALLOW SOIL TO PASS THROUGH SO LIFTING IS NOT IMPEDED. THE LIFTING HOLES SHALL BE COMPATIBLE WITH THE STANDARD LIFTING DEVICE.
- INSTALL CORFLUTE ('TELSTRA') GASKET UNDER PIT LID PROFILE WHERE THE REQUIREMENTS OF NOTE 9 CANNOT BE MET.
- ALL DIMENSIONS IN MILLIMETRES (U.N.O.).

DISCLAIMER
THIS STANDARD IS FOR THE RETRO-FITTING OF EXISTING 'ROUND-TO-SQUARE' PITS ONLY.
 ALL NEW CIRCULAR PIT INSTALLATIONS ARE TO BE TO DTMR DRAWING 1415, BSD-4032 AND BSD-4033. REFER NOTES 2, 3 & 4.

				DRAWING AUTHORISED FOR PUBLICATION B. BALL SIGNATURE ON ORIGINAL DATED 29/6/01		DESIGN	Std Dwgs WG	DATE	April '01	 BRISBANE CITY COUNCIL STANDARD DRAWING		SCALE		NOT TO SCALE	
C	Reference in Note 8 Updated to IDPSP	JAN '19	APR '19	APR '19	MANAGER ASSET SUPPORT - R.P.E.Q: 3, 8, 5, 2	DRAWN	CPO - P&D	DATE	April '01			DWG No.		BSD-4034	
B	Added BSD Plan References To Note 2 & Disclaimer	BW 50/9/16	AMG 5/09/16	AMG 5/09/16	DESIGN APPROVED B. HANSEN SIGNATURE ON ORIGINAL DATED 27/6/01	CHECKED	M. STEER	DATE	May '01	ORIGINAL SIZE		A3			
A	Drawing Converted from UMS Series April 2014	APR '14	APR '14	APR '14	PRINCIPAL ASSET OFFICER ROADS & DRAINAGE	DRAWING FILENAME	BSD-4034 (B) Replacement pit lid existing round to square pit types.dwg	ASSOCIATED PLANS	SUPERSEDES UMS-600-032	REVISION		C			
ISSUE	AMENDMENT	DRAWN DATE	CHK'D DATE	APPR'D DATE											

REPLACEMENT PIT LID
EXISTING ROUND-TO-SQUARE
PIT TYPES