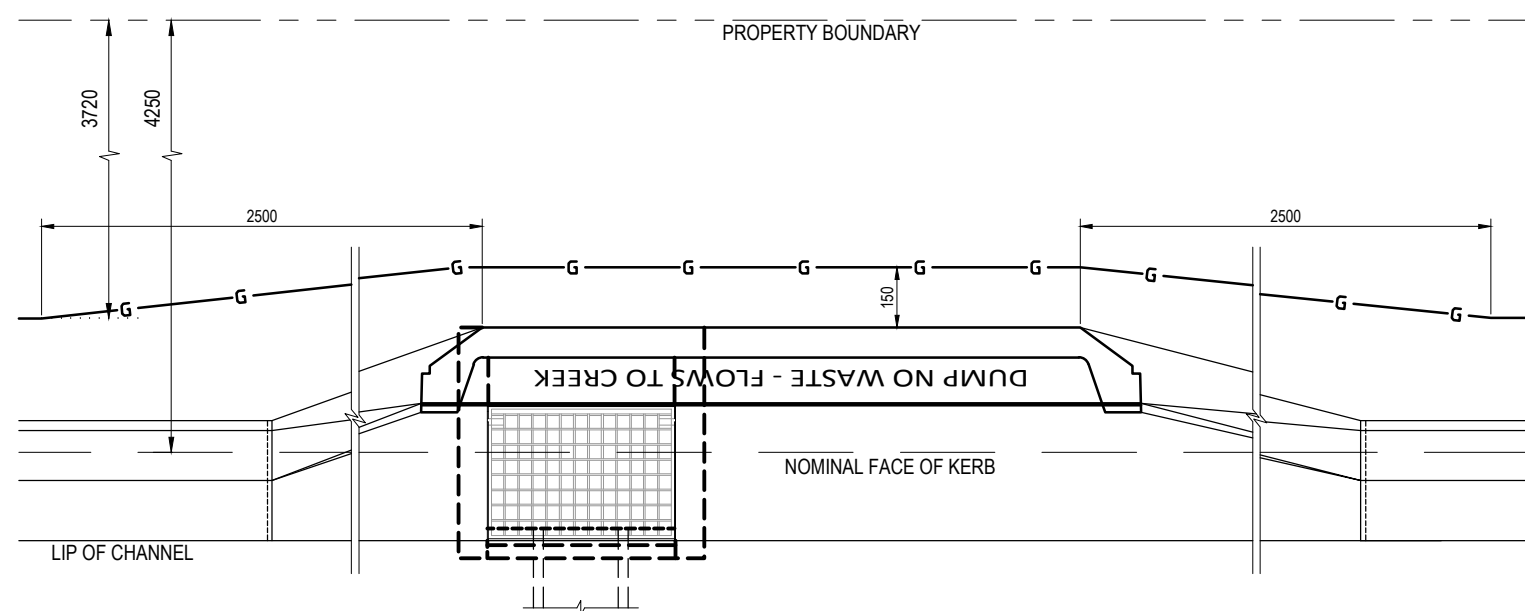
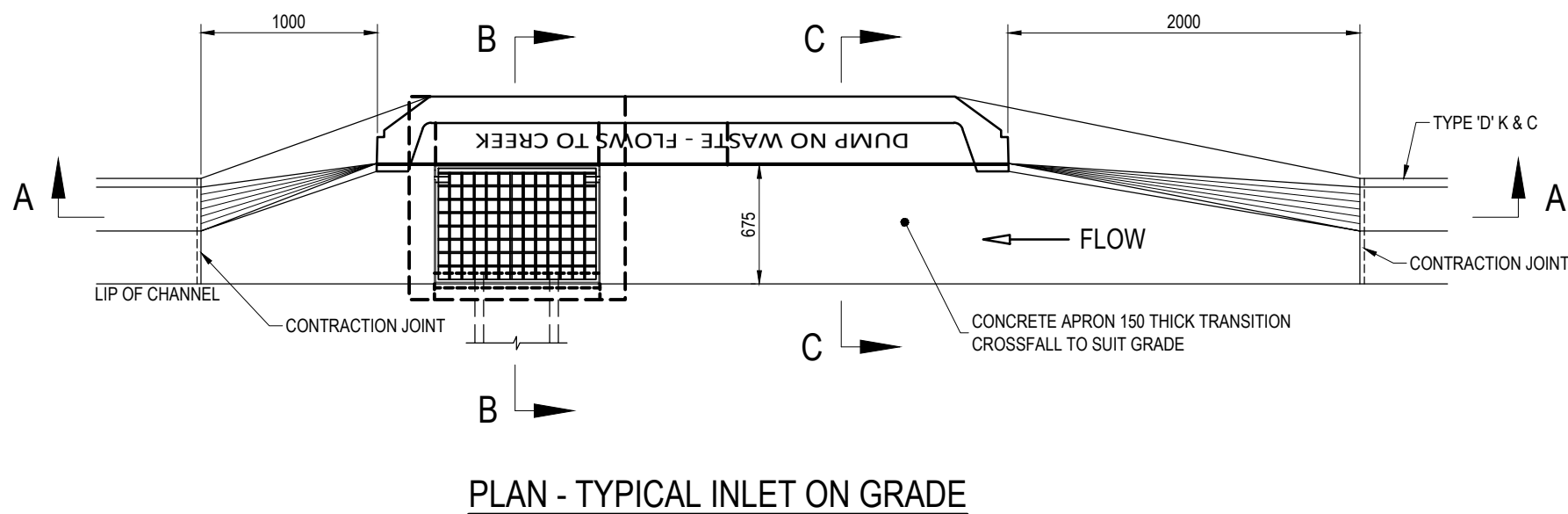


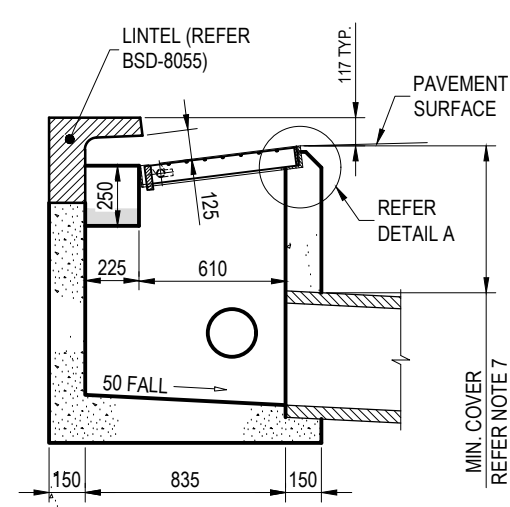
SECTION A - A



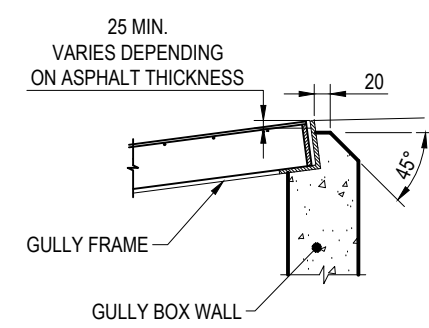
GAS RE-ALIGNMENT DETAILS



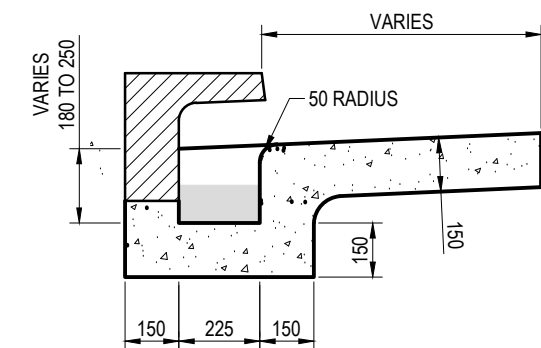
PLAN - TYPICAL INLET ON GRADE



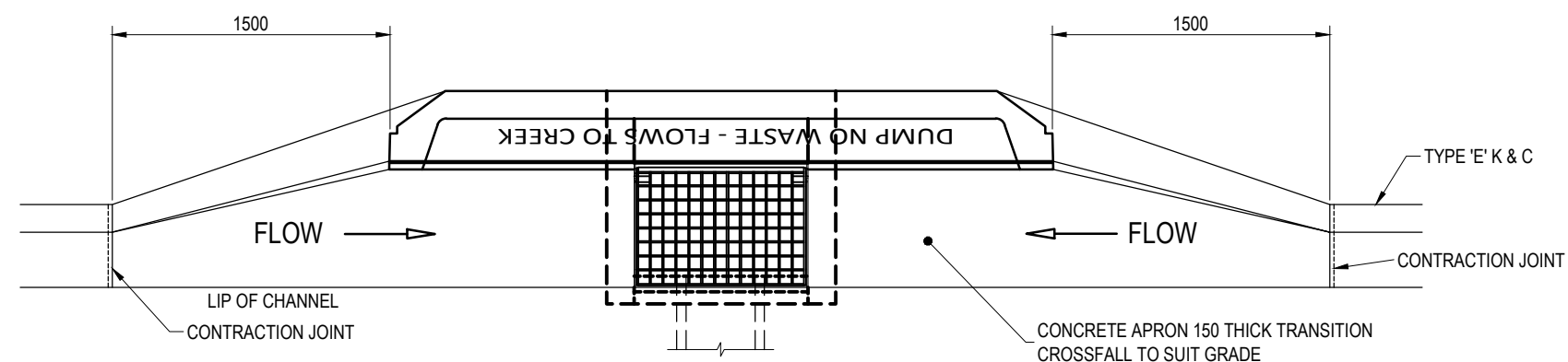
SECTION B-B



DETAIL A



SECTION C-C



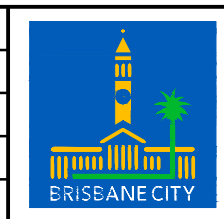
PLAN - TYPICAL INLET IN SAG

NOTES:

- REFER BSD-8055 FOR LINTEL DETAILS.
- CAST INSITU CONCRETE N25 TO AS1379 AND AS3600.
- REFER BSD-8053 & BSD-8054 FOR GULLY GRATE AND FRAME DETAILS.
- UNLESS APPROVED OTHERWISE BY COUNCIL DELEGATE, LIMIT DEPTH OF GULLY TO 1.35m.
- GULLIES DEEPER THAN 1.35m TO BE EITHER:
 - INDIVIDUALLY DESIGNED AND CERTIFIED BY AN RPEQ, OR
 - DESIGNED AND CONSTRUCTED TO DTMR STANDARD DRAWING No. 1311.
- INSTALL STEP IRONS TO GULLIES GREATER THAN 1.20m DEEP IN ACCORDANCE WITH AS1657.
- REFER TO BSD-2042 (ROADWAYS) AND BSD-2043 (PATHS AND VERGES) FOR MINIMUM COVER REQUIREMENTS. MIN. 450mm IN OTHER AREAS.
- DIMENSIONS IN MILLIMETRES (UNO).

ISSUE	AMENDMENT	DRAWN DATE	CHK'D DATE	APPR'D DATE
C	Note 4 & Min Cover on Section B-B Update, Notes 5 & 6 Added	APR '17	AUG '18	NOV '18
B	Benching Added to Gully Trough	DEC '15	JUL '16	JUL '16
A	Drawing Converted from UMS Series April 2014	APR '14	APR '14	APR '14

DRAWING AUTHORISED FOR PUBLICATION B.BALL SIGNATURE ON ORIGINAL DATED 29/06/01				DESIGN	STD DWG GROUP	DATE	APR '01
MANAGER ASSET SUPPORT - R.P.E.Q: 3822				DRAWN	CITY DESIGN	DATE	APR '01
DESIGN APPROVED B.HANSEN SIGNATURE ON ORIGINAL DATED 27/06/01				CHECKED	M.STEER	DATE	MAY '01
PRINCIPAL ASSET OFFICER ROADS AND DRAINAGE				DRAWING FILENAME	BSD-8051 (C) Type 'A' gully lip in line gully.dwg		
				ASSOCIATED PLANS	SUPERSEDES UMS-330		



BRISBANE CITY COUNCIL STANDARD DRAWING		SCALE	NOT TO SCALE
TYPE 'A' GULLY LIP IN LINE		DWG No.	BSD-8051
		ORIGINAL SIZE	A3
		REVISION	C