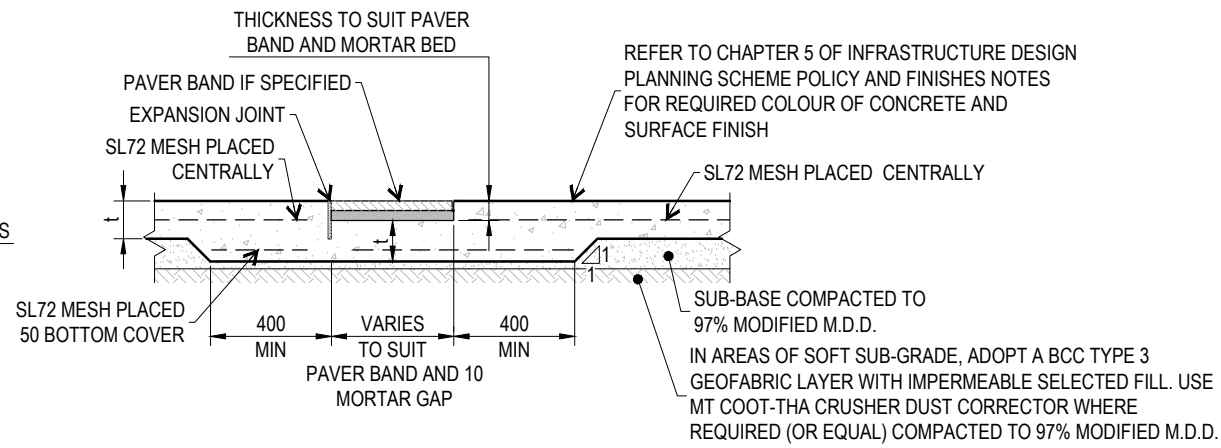


**DETAIL 'A'**  
**INSPECTION ACCESS FOR ELECTRICITY AND LIGHT POLES**



**SECTION A-A**

THICKNESS (t):  
125 MIN. IN ALL AREAS  
MATCH THICKNESS OF DRIVEWAY AT PROPERTY ENTRANCES

**FINISHES**

REFER TO CHAPTER 5, INFRASTRUCTURE DESIGN PLANNING SCHEME POLICY FOR REQUIRED CONCRETE COLOUR AND SURFACE FINISH. REQUIREMENTS FOR EACH SURFACE FINISH SHOWN BELOW:

**BROOM FINISH**

ENSURE SURFACE HAS A MEDIUM BROOM FINISH PERPENDICULAR TO DIRECTION OF PEDESTRIAN TRAVEL TO COMPLY WITH SLIP RESISTANCE REQUIREMENTS.

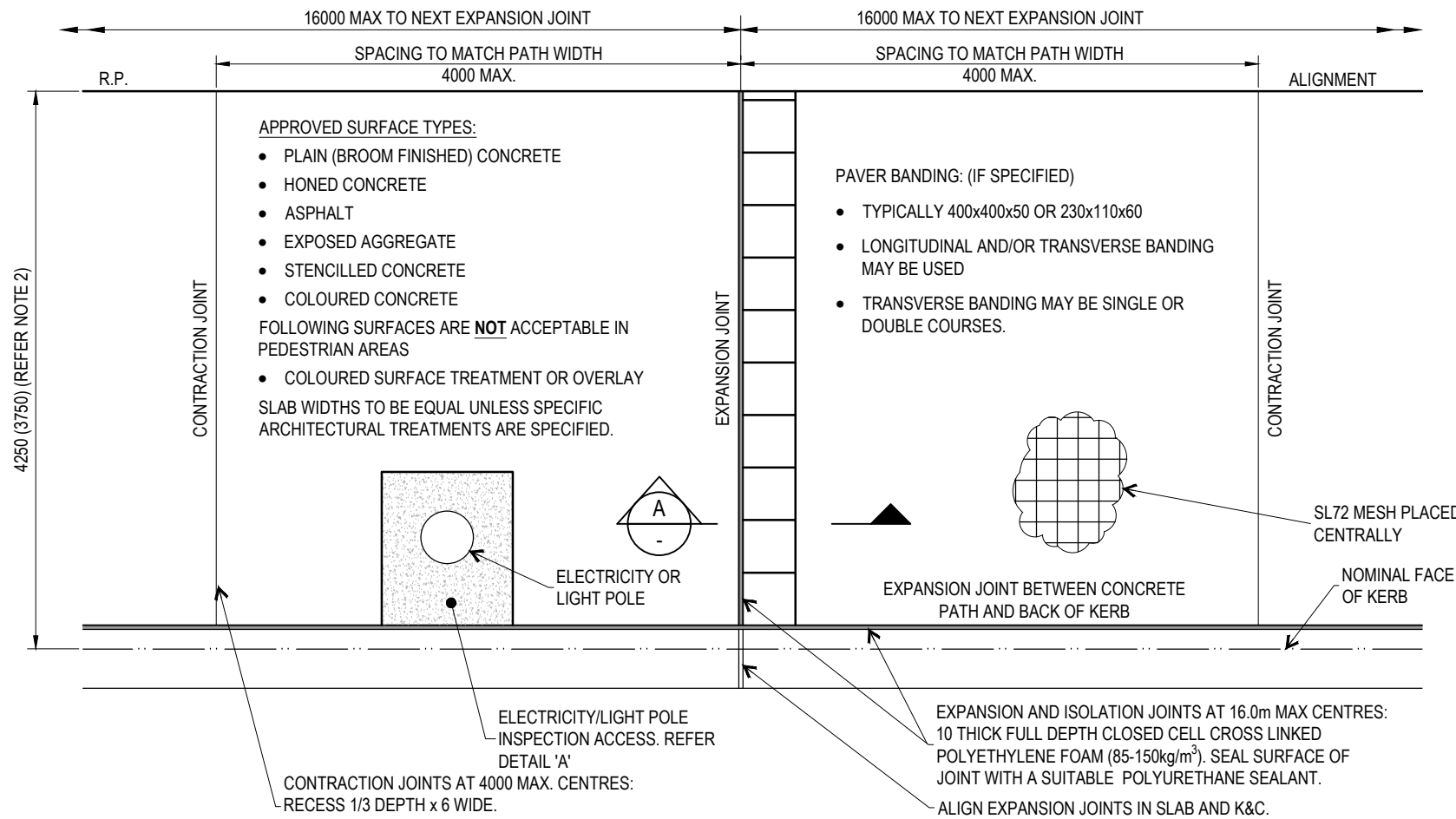
**EXPOSED AGGREGATE FINISH**

EXPOSED AGGREGATE FINISH USING A WATER WASH-OFF TECHNIQUE IN ACCORDANCE WITH CURRENT CEMENT AND CONCRETE ASSOCIATION OF AUSTRALIA - BRIEFING SHEET 'EXPOSED-AGGREGATE FINISHES FOR FLATWORK'. SHOW AT LEAST 80% CLEAN, EVENLY DISTRIBUTED AGGREGATE. ALL AGGREGATE SHALL BE WELL BONDED TO THE CEMENT MATRIX.

THE RESULTANT RESIDUE FROM THE TREATED SURFACE SHALL BE REMOVED IMMEDIATELY FROM THE PAVEMENT AND ANY PREVIOUSLY TREATED AREAS AND IS TO BE PREVENTED FROM ENTERING GARDEN BEDS OR THE STORMWATER SYSTEM.

**HONED FINISH**

REFER TO STANDARD DRAWINGS BSD-5207 TO BSD-5207 AND REFERENCE SPECIFICATION FOR CIVIL ENGINEERING WORKS S205 CBD CONCRETE FOOTPATHS FOR DETAIL.




**PLAN**

**GENERAL NOTES:**

1. THE SPECIFIED PAVEMENT STANDARD DOES NOT APPLY TO POOR SUBGRADE. REFER SUPPLEMENTARY NOTES (BSD-0019) FOR DETAIL.
2. VERGE WIDTH IS MEASURED FROM NOMINAL KERB FACE.
3. ALL WORKMANSHIP AND MATERIALS TO COMPLY WITH CURRENT AUSTRALIAN STANDARDS, IN PARTICULAR AS3600.
4. PATHS TO COMPLY WITH AUSTRALIAN STANDARDS AND COUNCIL REQUIREMENTS FOR ACCESS AND MOBILITY, PARTICULARLY AS1428.
5. ALL CONCRETE TO BE MINIMUM GRADE N32. CONCRETE SHALL BE NORMAL CLASS UNLESS SPECIFIED OTHERWISE.
6. FOR CONCRETE MATERIAL REQUIREMENTS, REFER REFERENCE SPECIFICATION FOR ENGINEERING WORKS S150 ROADWORKS, AND S205 CBD CONCRETE FOOTPATHS.
7. SUPPLY AND LAY SL72 MESH FOR HIGH IMPACT OR POOR SUBGRADE/FILL AREAS. MESH TO BE SUPPORTED ON 60mm BAR CHAIRS. MESH TO OVERLAP MIN. 350mm.
8. PATH TO HAVE EVEN CROSSFALL OF 1:50 DOWN TOWARDS KERB (NOMINAL).
9. CONCRETE SHALL BE PLACED IN ALTERNATE PANELS.
10. CONTRACTION JOINTS TO BE PROVIDED IN KERB AND CHANNEL TO ALIGN WITH ALL JOINTING IN FULL WIDTH SLAB. REFER TO STANDARD DRAWING BSD-5208 FOR EXPANSION AND CONTRACTION JOINT DETAILS.
11. PERMITS RELATING TO WORKS ON ROADS, VERGES AND DRAINAGE MUST BE SOUGHT FROM COUNCIL TO OBTAIN APPROVAL OF LOCATION AND LEVELS PRIOR TO ANY EXCAVATION.
12. ENSURE STREETSCAPE ELEMENTS ARE CLEANED OF CONCRETE SLURRY OR SPRAY WHEN INSTALLED TO PREVENT STAINING OR DAMAGE TO APPLIED SURFACE.
13. REFER BSD-5201 FOR 1.2m and 1.8m WIDTH FOOTPATH CONSTRUCTION REQUIREMENTS.
14. ALL DIMENSIONS IN MILLIMETRES (U.N.O.).

THE FITNESS FOR PURPOSE OF THIS STANDARD DRAWING FOR A SPECIFIC PROJECT SHALL BE ASSESSED AND ACCEPTED BY A SUITABLY QUALIFIED REGISTERED PROFESSIONAL ENGINEER OF QUEENSLAND (RPEQ).

	<b>BRISBANE CITY COUNCIL STANDARD DRAWING</b>		PUBLISH DATE Mar '21	
	<b>CONCRETE FOOTPATH FULL WIDTH</b>		SCALE NOT TO SCALE	
			DRAWING NUMBER <b>BSD-5202</b>	
	ORIGINAL SIZE <b>A3</b>	REVISION <b>C</b>		