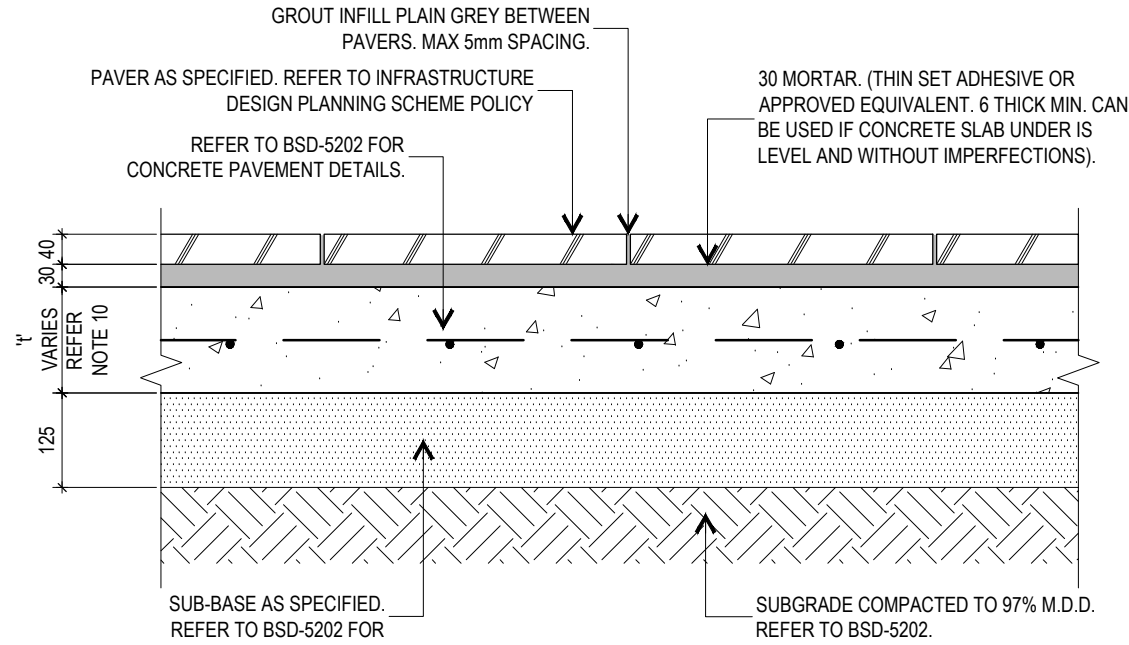


GENERAL NOTES

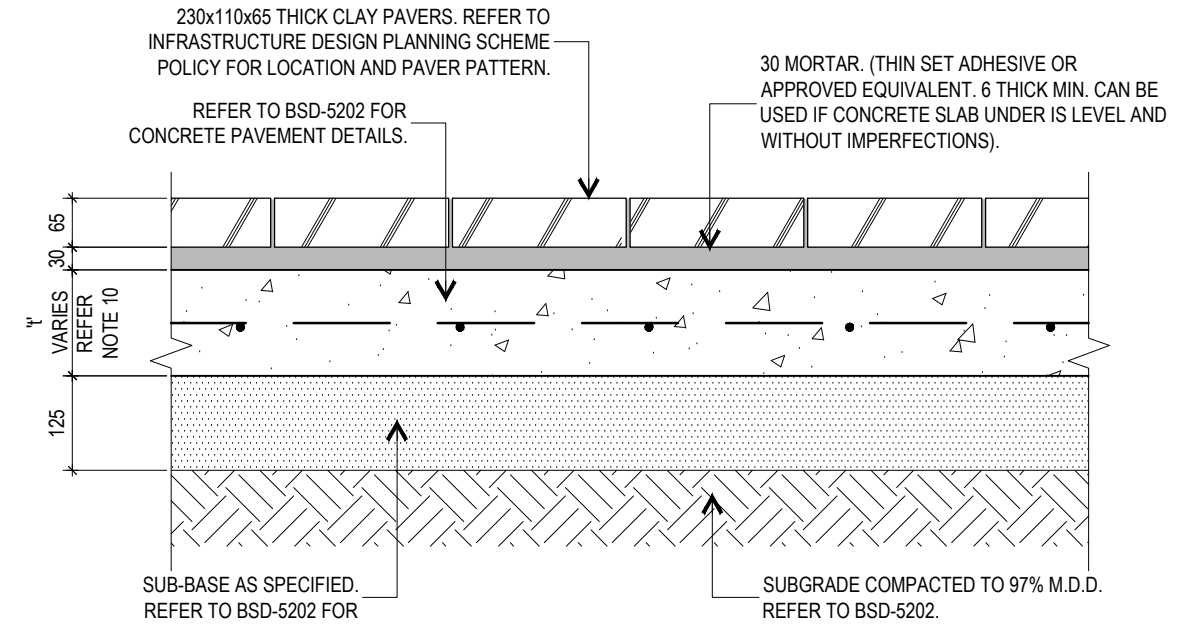
- REFER TO INFRASTRUCTURE DESIGN PLANNING SCHEME POLICY FOR LOCATIONS ON WHERE PAVERS ARE TO BE USED AS FOOTPATH FINISH.
- PAVER TYPE AND COLOUR AS SPECIFIED IN THE INFRASTRUCTURE DESIGN PLANNING SCHEME POLICY.
- CARRY OUT WET PENDULUM TEST SLIP RESISTANCE TESTING ON PATH SURFACE TO AS/NZS4586 FOR ALL NEW SURFACES.
 - NEW/UNTRAFFICKED EXTERNAL SURFACES (<1 IN 20): CLASSIFIED AS CLASS 'P5' (>44 MEAN BPN USING A SLIDER 55 (TRL) RUBBER PAD) TO AS/NZS4586.
 - NEW/UNTRAFFICKED EXTERNAL SURFACES (>1 IN 20): MEAN BPN MUST BE INCREASED IN ACCORDANCE WITH APPENDIX A OF HB197 - AN INTRODUCTORY GUIDE TO SLIP RESISTANCE OF PEDESTRIAN SURFACES.

NO ADDITIONAL APPLIED SLIP RESISTANCE TREATMENT IS PERMITTED. CONTRACTOR IS TO UNDERTAKE A SLIP RESISTANCE TEST TO NEW SURFACES IF REQUESTED BY THE SUPERINTENDENT AT NO ADDITIONAL COST.
- SLIP RESISTANCE TESTING TO BE UNDERTAKEN WITH A BRITISH PENDULUM TEST USING A SLIDER 55 (TRL) RUBBER PAD AND RECORDED AND PRESENTED AS A BPN BY A SUITABLY ACCREDITED NATA LABORATORY.
- REFER TO BSD-9008 FOR STREET TREE INSTALLATION. REFER TO BSD-9010, BSD-9011 & BSD-9012 FOR TREE TRENCH DETAILS AND SLAB REQUIREMENTS WHERE TREE TRENCH IS INCORPORATED.
- MORTAR FOR PAVERS. TO BE 5 PARTS SAND, AND 1 PART CEMENT 15-20MPA AND 100+ SLUMP. USE MBT BARRA EMULSION 57 OR APPROVED EQUIVALENT AT A RATE OF 1 PART EMULSION TO 4 PARTS WATER.*
- SLAB. REFER TO BSD-5202 FOR CONCRETE SLAB SPECIFICATIONS.
- DIMENSIONS ARE IN MILLIMETERS. (U.N.O.).
- TOLERANCES FOR PAVERS AND SLAB ARE ±5mm HORIZONTALLY. THERE IS NO VERTICAL TOLERANCE BETWEEN FINISHED LEVELS OF PAVERS.
- CONCRETE BASE SLAB (t):
 - 125 THICK UNDER FOOTPATHS; AND
 - 180 THICK UNDER ROADWAYS.

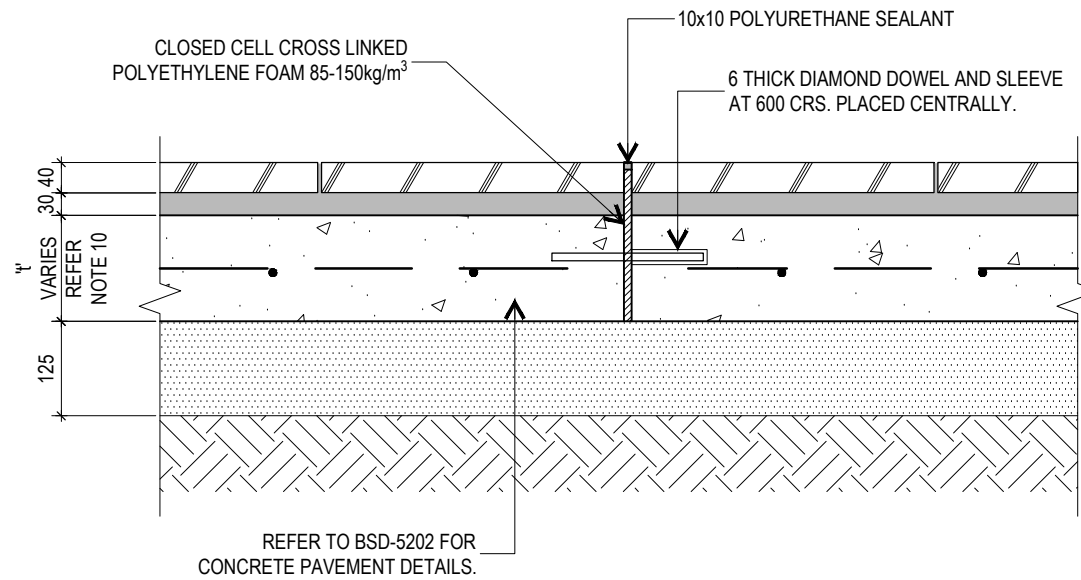
CONSULTATION WITH PRODUCT MANUFACTURER'S REPRESENTATIVE PRIOR TO USE OF ADDITIVE IS ADVISED.



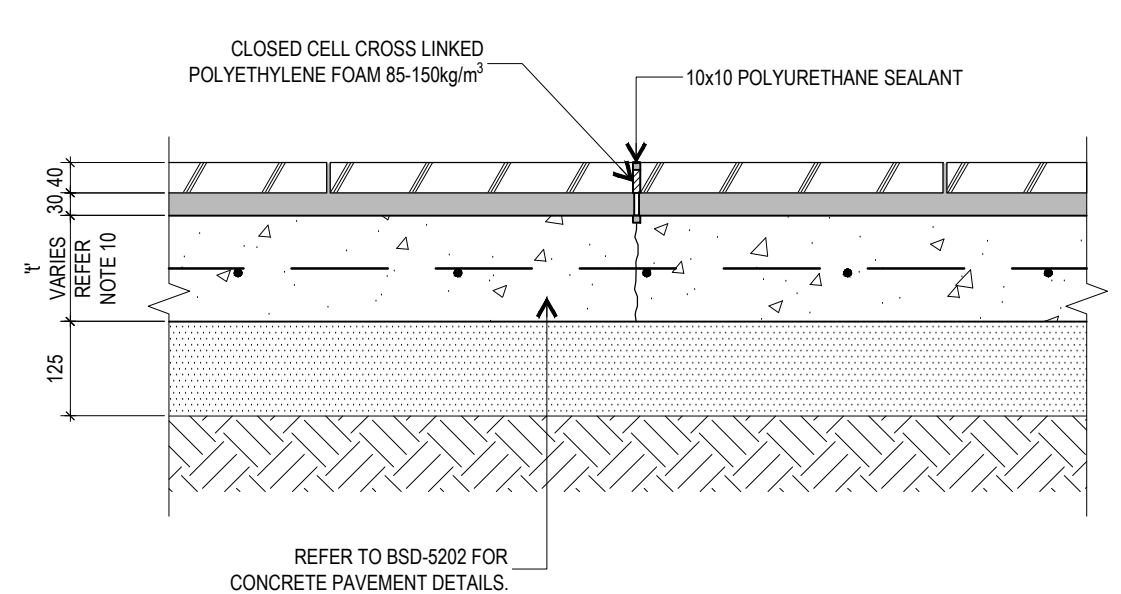
PAVER FOOTPATH (400x400mm) TYPICAL DETAIL



PAVER FOOTPATH (230x110mm) TYPICAL DETAIL




PAVER FOOTPATH - EXPANSION JOINT



PAVER FOOTPATH - CONTRACTION JOINT

THE FITNESS FOR PURPOSE OF THIS STANDARD DRAWING FOR A SPECIFIC PROJECT SHALL BE ASSESSED AND ACCEPTED BY A SUITABLY QUALIFIED REGISTERED PROFESSIONAL ENGINEER OF QUEENSLAND (RPEQ).

	BRISBANE CITY COUNCIL STANDARD DRAWING		PUBLISH DATE	Mar '21
	PAVERS - GENERAL DETAILS		SCALE	NOT TO SCALE
			DRAWING NUMBER	BSD-5210
	ORIGINAL SIZE	A3	REVISION	C