

# Brighton Creek Flood Study

## Volume 2 of 2

### Flood Mapping

---

Prepared by Jacobs  
Prepared for Brisbane City Council

July 2023

#### Flood Study Report Disclaimer

The Brisbane City Council ("Council") has prepared this report as a general reference source only and has taken all reasonable measures to ensure that the material contained in this report is as accurate as possible at the time of publication. However, the Council makes no representation and gives no warranty about the accuracy, reliability, completeness or suitability for any particular purpose of the information and the user uses and relies upon the information in this report at its own sole risk and liability. Council is not liable for errors or omissions in this report. To the full extent that it is able to do so in law, the Council disclaims all liability, (including liability in negligence), for any loss, damage or costs, (including indirect and consequential loss and damage), caused by or arising from anyone using or relying on the information in this report for any purpose whatsoever.

Flood information and studies regarding the Brisbane City Council local government area are periodically reviewed and updated by the Council. Changes may be periodically made to the flood study information. These changes may or may not be incorporated in any new version of the flood study publication. It is the responsibility of the user to ensure that the report being referred to is the most current and that the information in such report is the most up-to-date information available.

*This report is subject to copyright law. No part may be reproduced by any process except in accordance with the provisions of the Copyright Act 1968.*



*Dedicated to a better Brisbane*



Dedicated to a better Brisbane

Jacobs Group (Australia) Pty Ltd

Level 7, 32 Cordelia St  
South Brisbane, QLD 4101  
Australia

T +61 7 3026 7100  
F +61 7 3026 7107  
<https://www.jacobs.com/>

Copyright Jacobs Group (Australia) Pty Ltd © 2023.  
All rights reserved. The concepts and information contained in this document are the property of the Jacobs group of companies. Use or copying of this document in whole or in part without the written permission of Jacobs constitutes an infringement of copyright. Jacobs, the Jacobs logo, and all other Jacobs trademarks are the property of Jacobs.  
NOTICE: This document has been prepared exclusively for the use and benefit of Jacobs’ client. Jacobs accepts no liability or responsibility for any use or reliance upon this document by any third party.

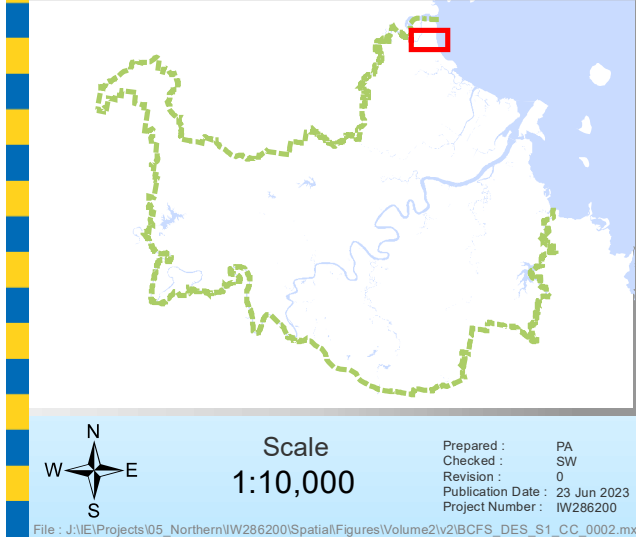
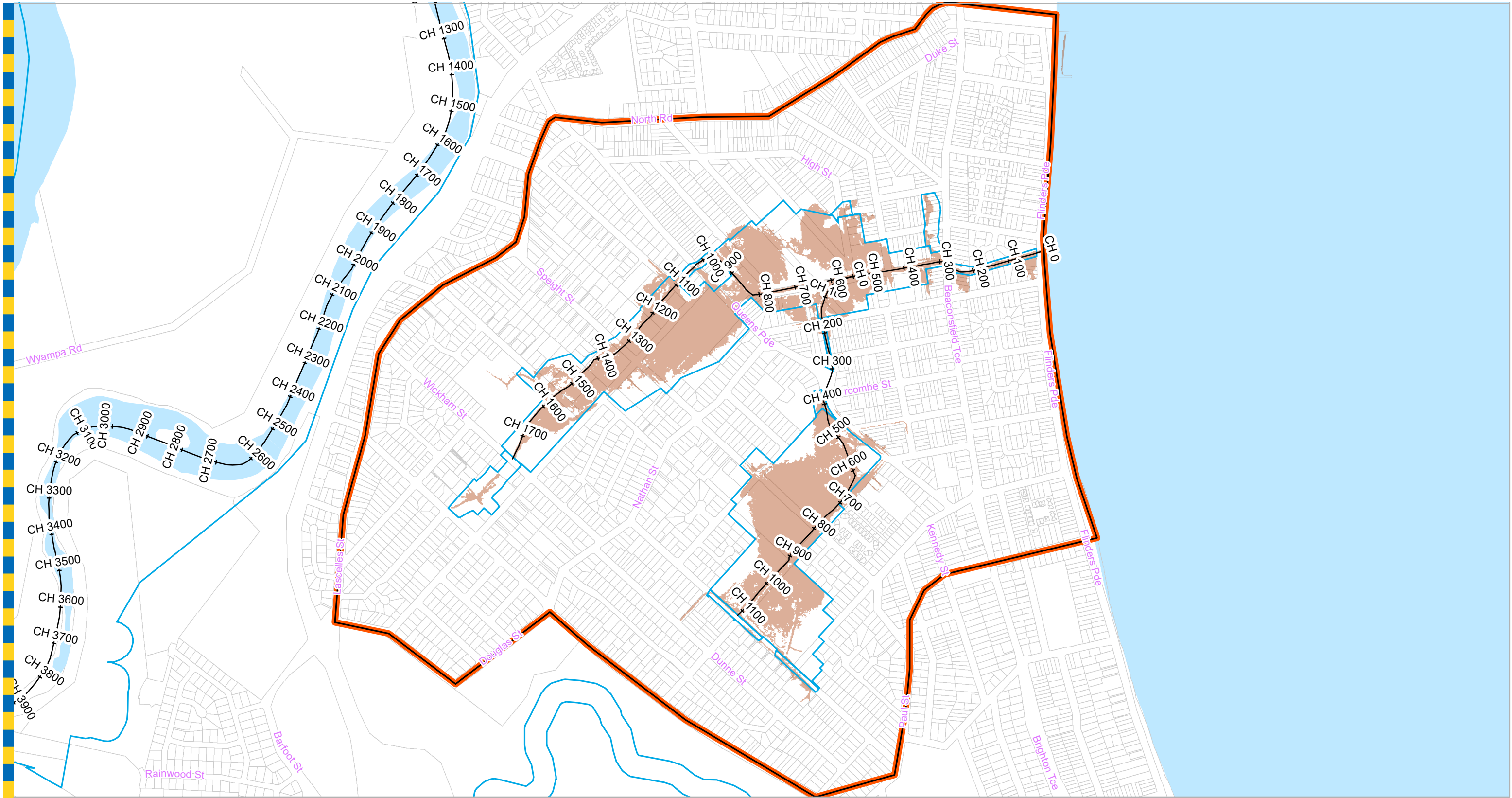
The Brisbane City Council (“Council”) has provided this report as a general reference source only and the data contained herein should not be interpreted as forming Council policy. All reasonable measures have been taken to ensure that the material contained in this report is as accurate as possible at the time of publication. However, the Council makes no representation and gives no warranty about the accuracy, reliability, completeness or suitability for any particular purpose of the information and the user uses and relies upon the information in this report at its own sole risk and liability. Council is not liable for errors or omissions in this report. To the full extent that it is able to do so in law, the Council disclaims all liability, (including liability in negligence), for any loss, damage or costs, (including indirect and consequential loss and damage), caused by or arising from anyone using or relying on the information in this report for any purpose whatsoever.

Document Control:							
Issue No.	Date of Issue	Amdt	Prepared By		Reviewed By		Approved for Issue
			Initials	RPEQ Number and Signature	Initials	RPEQ Number and Signature	Initials
0	11/4/2023	DRAFT					
1	12/06/2023	DRAFT					
2	3/07/2023	FINAL	SW	10596	AM	06921	AM

APPENDIX M - Design Flood Mapping

Existing Scenario (Scenario 1) Design Event Maps

- I.1 50% AEP Flood Extents
- I.2 20% AEP Flood Extents
- I.3 10% AEP Flood Extents
- I.4 5% AEP Flood Extents
- I.5 2% AEP Flood Extents
- I.6 1% AEP Flood Extents
- I.7 0.5% AEP Flood Extents
- I.8 0.2% AEP Flood Extents
- I.9 0.05% AEP Flood Extents



**Legend**

- Extent of Mapping
- AMTD Line
- City Plan Waterway Corridors
- Waterway/Waterbody
- Flood Inundation Extent

**DATA INFORMATION**

The flood maps must be read in conjunction with the flood study report and interpreted by a qualified professional engineer. The flood maps are based on the best data available to Brisbane City Council ("Council") at the time the maps were developed. Council, and the copyright owners listed below, give no warranty in relation to the data (including accuracy, reliability, completeness, currency or suitability) presented in these maps and the user uses and relies upon the data in the maps at its own sole risk and liability. Council is not liable for errors or omissions in the flood maps. To the full extent that it is able to do so in law, the Council disclaims all liability (including without limitation, liability in negligence) for any loss, damage or costs (including in direct and consequential loss and damage), caused by or arising from anyone using or relying on the data contained in the flood maps for any purpose whatsoever.

©Brisbane City Council 2023 (Unless stated below)  
Cadastre © 2023 Department of Natural Resources, Mines and Energy  
Nearmap Imagery © 2021 Nearmap Australia Pty Ltd  
StreetPro © 2021 Precisely; © 2021 PSMA Australia Ltd

Prepared by (Jacobs Group (Australia) Pty Ltd) for:  
Brisbane City Council  
City Projects Office  
GPO Box 1434  
Brisbane Qld 4001

For more information  
visit [www.brisbane.qld.gov.au](http://www.brisbane.qld.gov.au)  
or call (07) 3403 8888

*Dedicated to a better Brisbane*

**Brighton Creek**

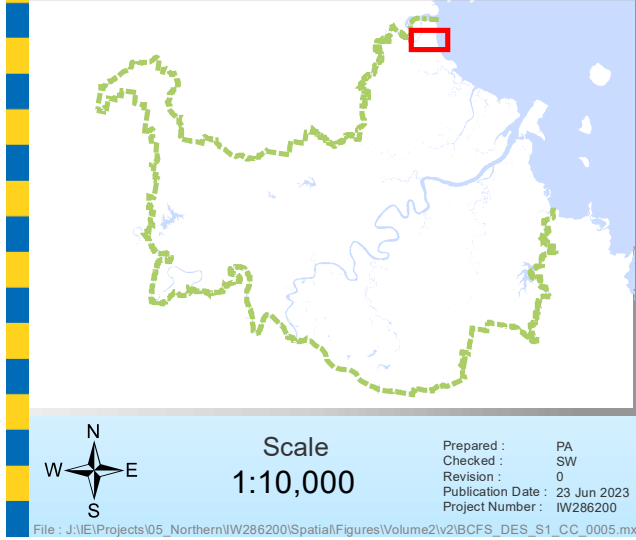
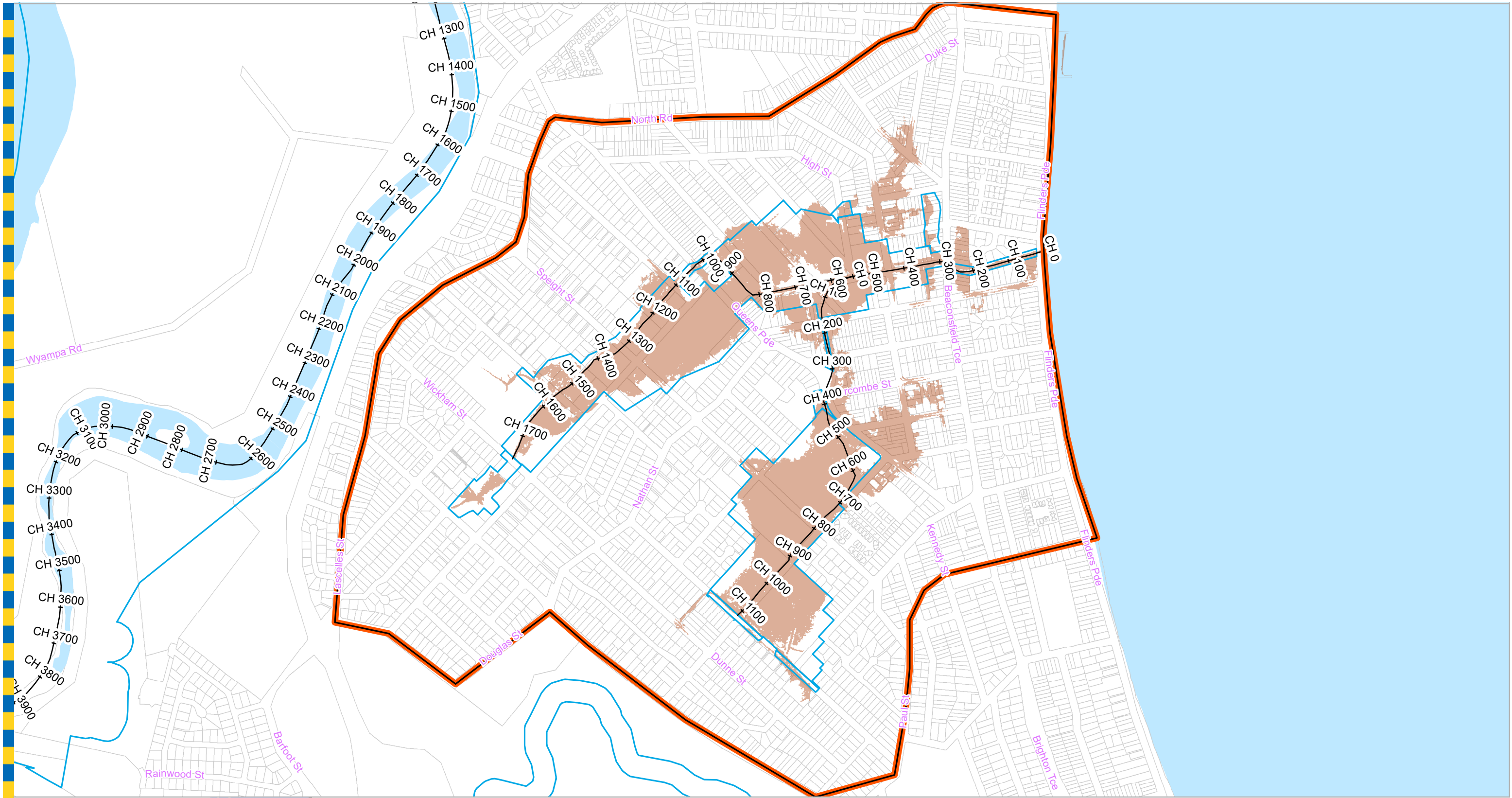
**50% AEP Flood Extent Map**

Climate Change Scenario

**For Information Only - Not Council Policy**

GIM - 100001 - 001





- Legend**
- Extent of Mapping
  - AMTD Line
  - City Plan Waterway Corridors
  - Waterway/Waterbody
  - Flood Inundation Extent

**DATA INFORMATION**

The flood maps must be read in conjunction with the flood study report and interpreted by a qualified professional engineer. The flood maps are based on the best data available to Brisbane City Council ("Council") at the time the maps were developed. Council, and the copyright owners listed below, give no warranty in relation to the data (including accuracy, reliability, completeness, currency or suitability) presented in these maps and the user uses and relies upon the data in the maps at its own sole risk and liability. Council is not liable for errors or omissions in the flood maps. To the full extent that it is able to do so in law, the Council disclaims all liability (including without limitation, liability in negligence) for any loss, damage or costs (including in direct and consequential loss and damage), caused by or arising from anyone using or relying on the data contained in the flood maps for any purpose whatsoever.

©Brisbane City Council 2023 (Unless stated below)  
Cadastre © 2023 Department of Natural Resources, Mines and Energy  
Nearmap Imagery © 2021 Nearmap Australia Pty Ltd  
StreetPro © 2021 Precisely; © 2021 PSMA Australia Ltd

Prepared by (Jacobs Group (Australia) Pty Ltd) for:  
Brisbane City Council  
City Projects Office  
GPO Box 1434  
Brisbane Qld 4001

For more information  
visit [www.brisbane.qld.gov.au](http://www.brisbane.qld.gov.au)  
or call (07) 3403 8888

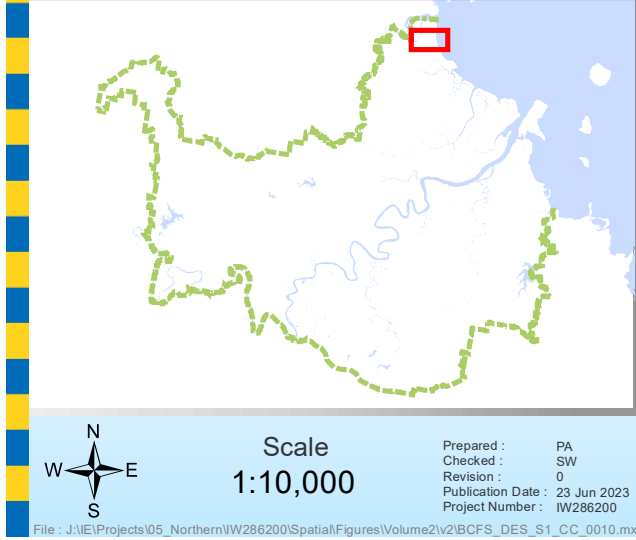
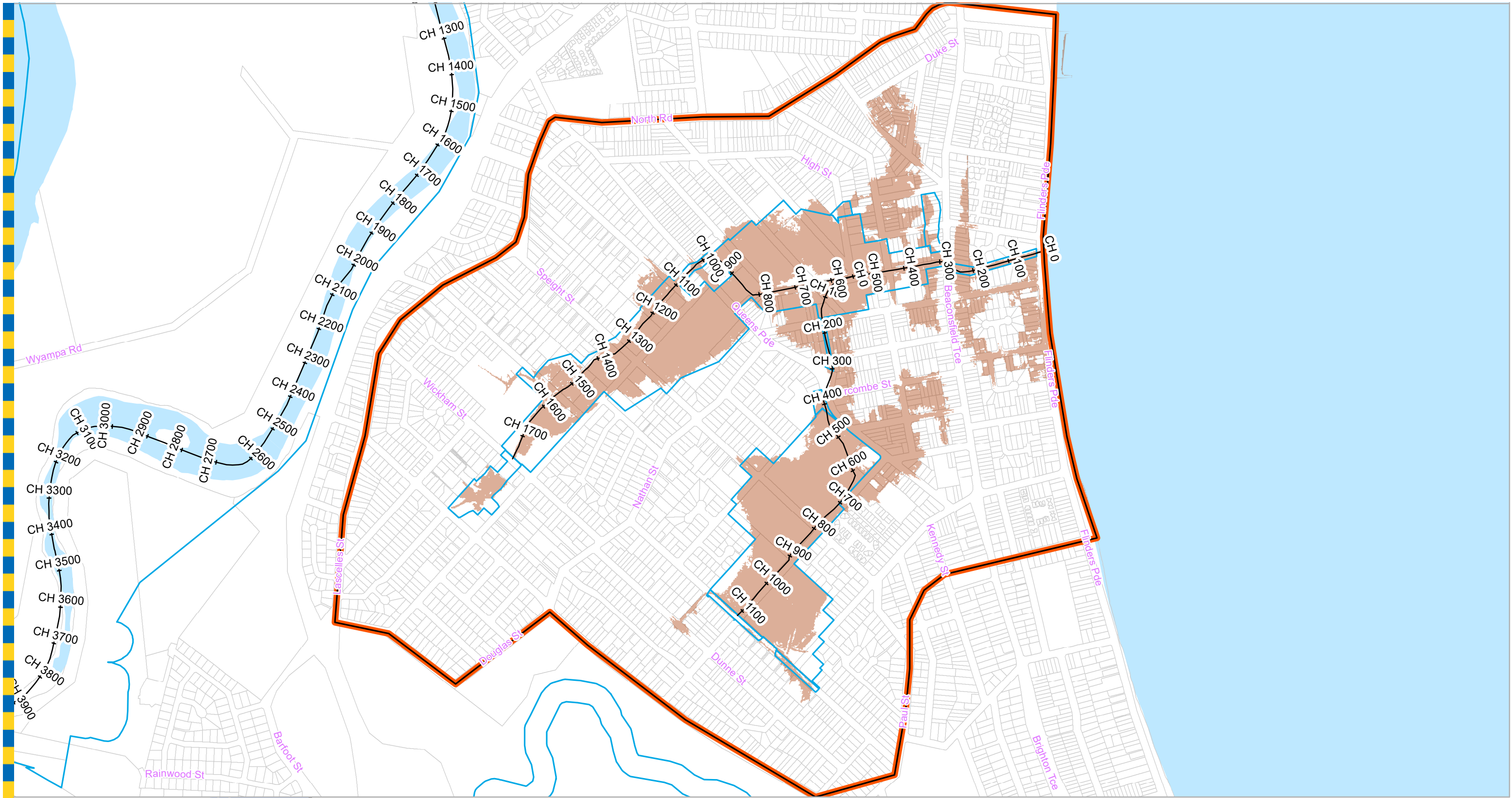


*Dedicated to a better Brisbane*

# Brighton Creek 20% AEP Flood Extent Map Climate Change Scenario

**For Information Only - Not Council Policy**





- Legend**
- Extent of Mapping
  - AMTD Line
  - City Plan Waterway Corridors
  - Waterway/Waterbody
  - Flood Inundation Extent

**DATA INFORMATION**

The flood maps must be read in conjunction with the flood study report and interpreted by a qualified professional engineer. The flood maps are based on the best data available to Brisbane City Council ("Council") at the time the maps were developed. Council, and the copyright owners listed below, give no warranty in relation to the data (including accuracy, reliability, completeness, currency or suitability) presented in these maps and the user uses and relies upon the data in the maps at its own sole risk and liability. Council is not liable for errors or omissions in the flood maps. To the full extent that it is able to do so in law, the Council disclaims all liability (including without limitation, liability in negligence) for any loss, damage or costs (including in direct and consequential loss and damage), caused by or arising from anyone using or relying on the data contained in the flood maps for any purpose whatsoever.

©Brisbane City Council 2023 (Unless stated below)  
Cadastre © 2023 Department of Natural Resources, Mines and Energy  
Nearmap Imagery © 2021 Nearmap Australia Pty Ltd  
StreetPro © 2021 Precisely; © 2021 PSMA Australia Ltd

Prepared by (Jacobs Group (Australia) Pty Ltd) for:  
Brisbane City Council  
City Projects Office  
GPO Box 1434  
Brisbane Qld 4001

For more information  
visit [www.brisbane.qld.gov.au](http://www.brisbane.qld.gov.au)  
or call (07) 3403 8888

**For Information Only - Not Council Policy**



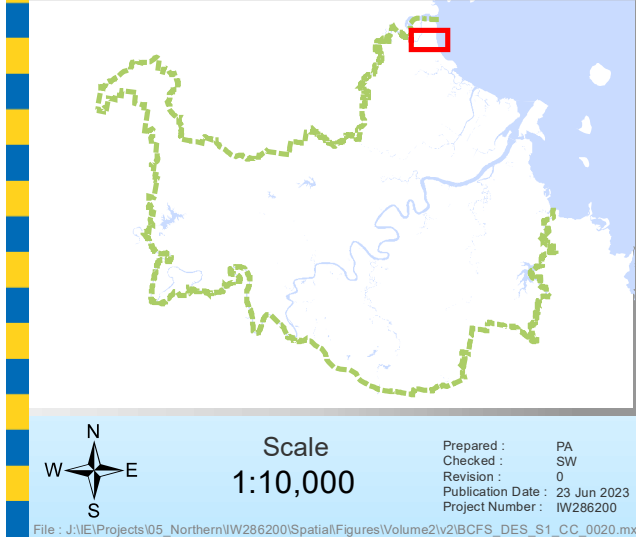
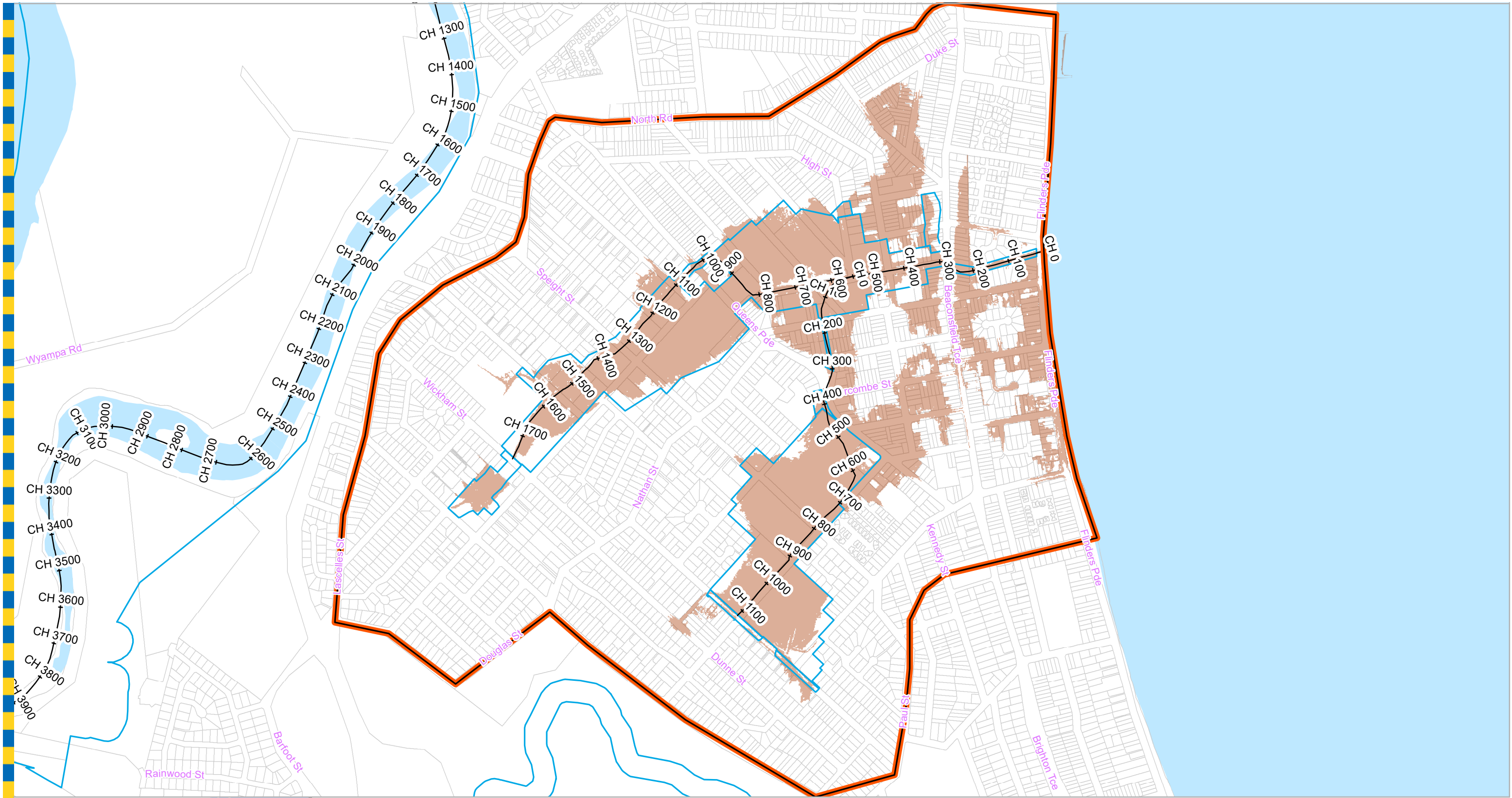
*Dedicated to a better Brisbane*

## Brighton Creek

### 10% AEP Flood Extent Map

Climate Change Scenario





- Legend**
- Extent of Mapping
  - AMTD Line
  - City Plan Waterway Corridors
  - Waterway/Waterbody
  - Flood Inundation Extent

**DATA INFORMATION**

The flood maps must be read in conjunction with the flood study report and interpreted by a qualified professional engineer. The flood maps are based on the best data available to Brisbane City Council ("Council") at the time the maps were developed. Council, and the copyright owners listed below, give no warranty in relation to the data (including accuracy, reliability, completeness, currency or suitability) presented in these maps and the user uses and relies upon the data in the maps at its own sole risk and liability. Council is not liable for errors or omissions in the flood maps. To the full extent that it is able to do so in law, the Council disclaims all liability (including without limitation, liability in negligence) for any loss, damage or costs (including in direct and consequential loss and damage), caused by or arising from anyone using or relying on the data contained in the flood maps for any purpose whatsoever.

©Brisbane City Council 2023 (Unless stated below)  
Cadastre © 2023 Department of Natural Resources, Mines and Energy  
Nearmap Imagery © 2021 Nearmap Australia Pty Ltd  
StreetPro © 2021 Precisely; © 2021 PSMA Australia Ltd

Prepared by (Jacobs Group (Australia) Pty Ltd) for:  
Brisbane City Council  
City Projects Office  
GPO Box 1434  
Brisbane Qld 4001

For more information  
visit [www.brisbane.qld.gov.au](http://www.brisbane.qld.gov.au)  
or call (07) 3403 8888



*Dedicated to a better Brisbane*

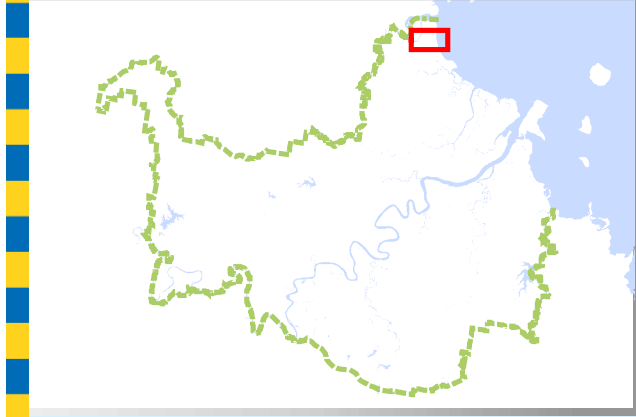
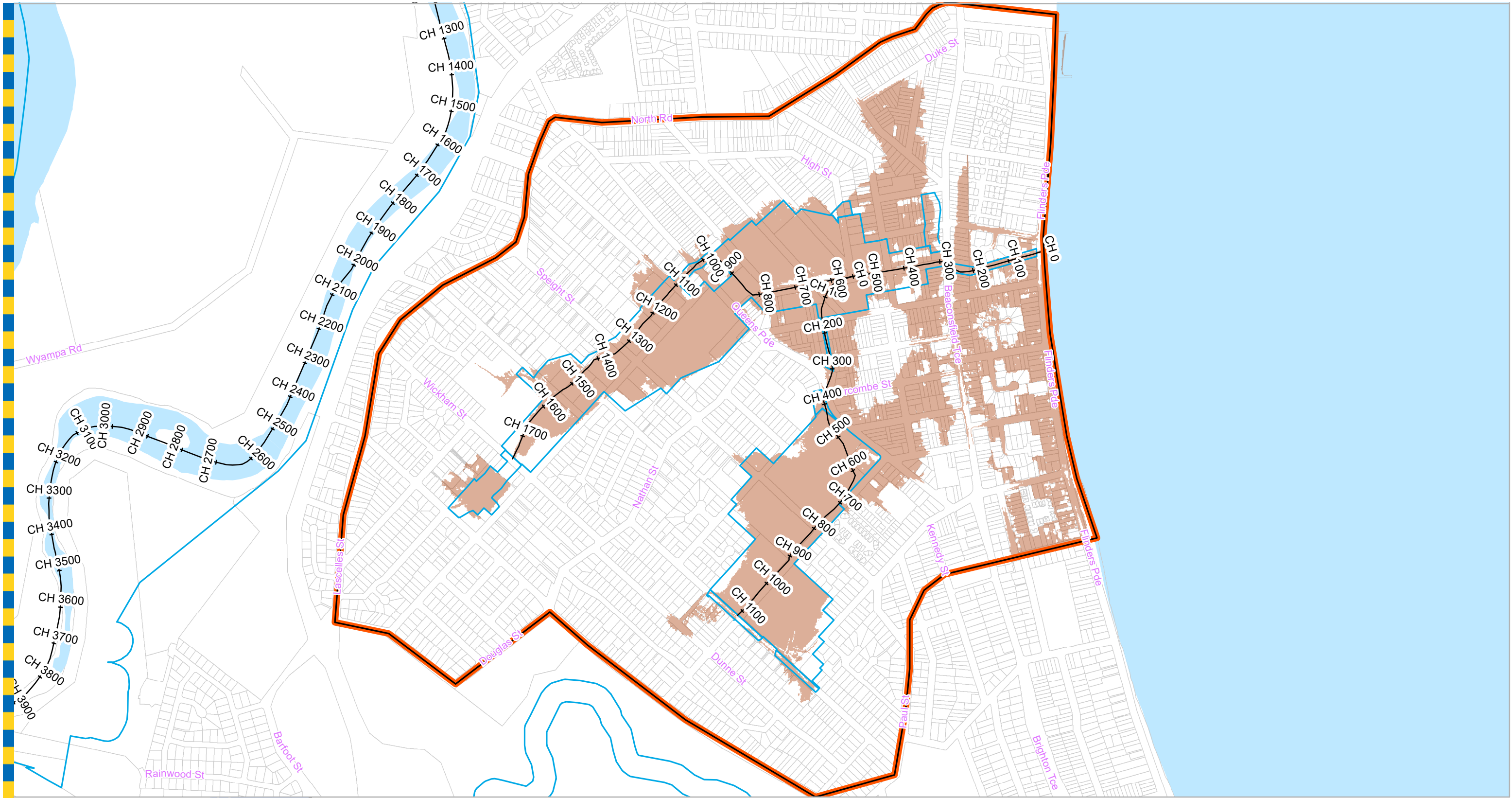
## Brighton Creek

### 5% AEP Flood Extent Map

Climate Change Scenario

**For Information Only - Not Council Policy**





- Legend**
- Extent of Mapping
  - AMTD Line
  - City Plan Waterway Corridors
  - Waterway/Waterbody
  - Flood Inundation Extent

**DATA INFORMATION**

The flood maps must be read in conjunction with the flood study report and interpreted by a qualified professional engineer. The flood maps are based on the best data available to Brisbane City Council ("Council") at the time the maps were developed. Council, and the copyright owners listed below, give no warranty in relation to the data (including accuracy, reliability, completeness, currency or suitability) presented in these maps and the user uses and relies upon the data in the maps at its own sole risk and liability. Council is not liable for errors or omissions in the flood maps. To the full extent that it is able to do so in law, the Council disclaims all liability (including without limitation, liability in negligence) for any loss, damage or costs (including in direct and consequential loss and damage), caused by or arising from anyone using or relying on the data contained in the flood maps for any purpose whatsoever.

©Brisbane City Council 2023 (Unless stated below)  
Cadastre © 2023 Department of Natural Resources, Mines and Energy  
Nearmap Imagery © 2021 Nearmap Australia Pty Ltd  
StreetPro © 2021 Precisely; © 2021 PSMA Australia Ltd

Prepared by (Jacobs Group (Australia) Pty Ltd) for:  
Brisbane City Council  
City Projects Office  
GPO Box 1434  
Brisbane Qld 4001

For more information  
visit [www.brisbane.qld.gov.au](http://www.brisbane.qld.gov.au)  
or call (07) 3403 8888



*Dedicated to a better Brisbane*

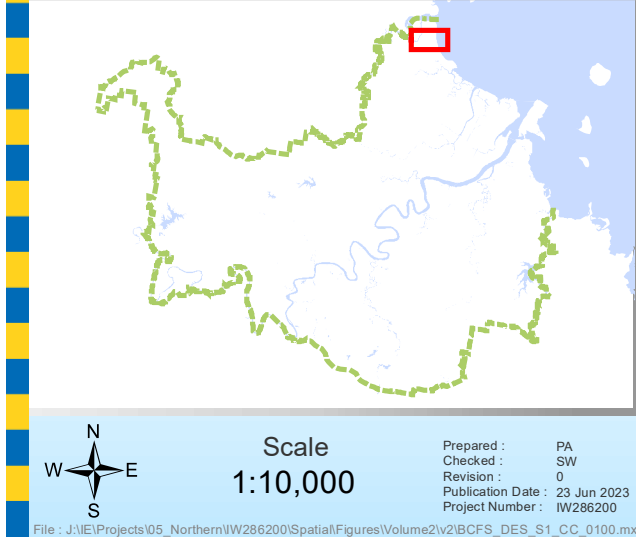
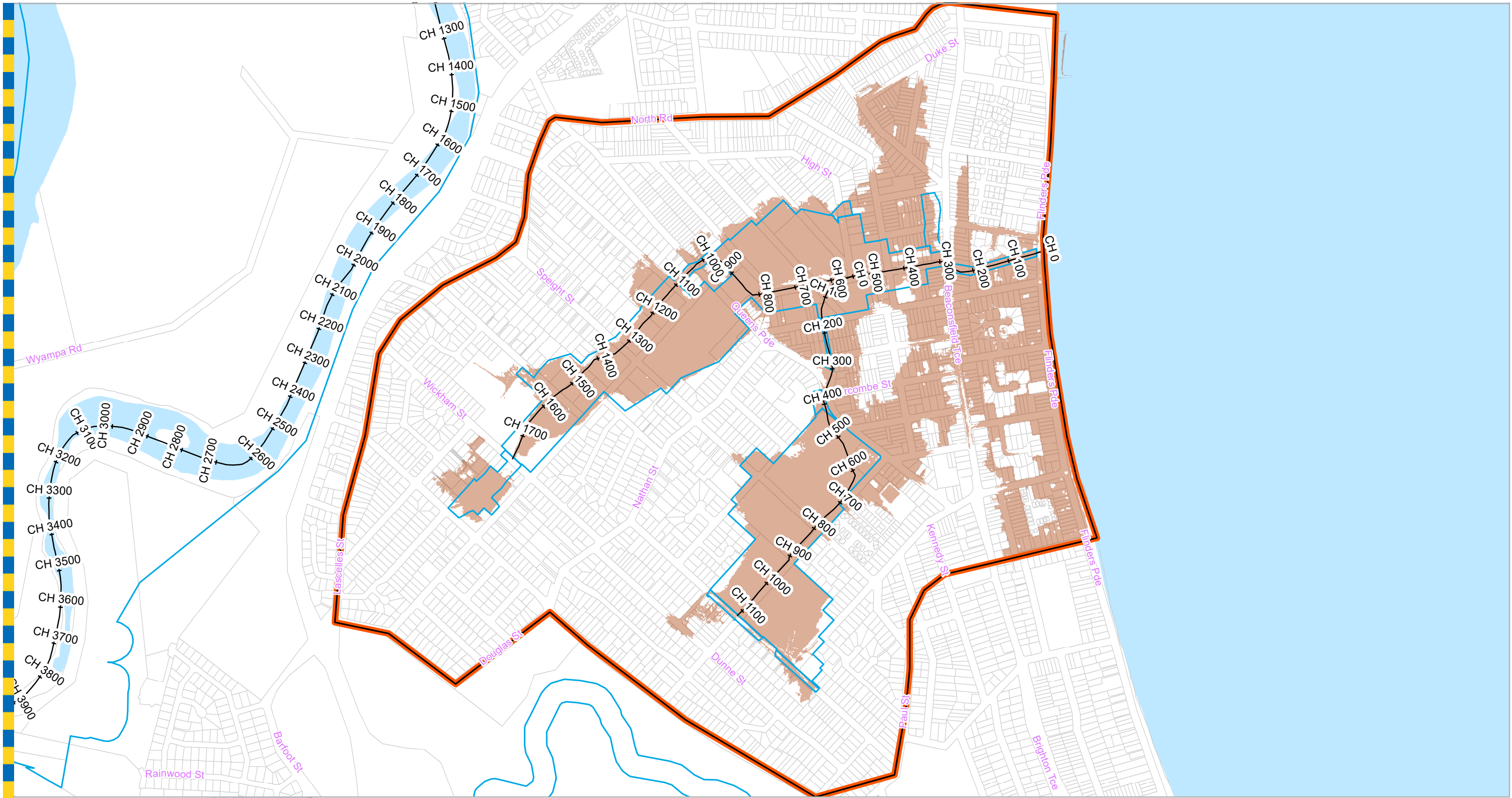
## Brighton Creek

### 2% AEP Flood Extent Map

Climate Change Scenario

**For Information Only - Not Council Policy**





- Legend**
- Extent of Mapping
  - AMTD Line
  - City Plan Waterway Corridors
  - Waterway/Waterbody
  - Flood Inundation Extent

**DATA INFORMATION**

The flood maps must be read in conjunction with the flood study report and interpreted by a qualified professional engineer. The flood maps are based on the best data available to Brisbane City Council ("Council") at the time the maps were developed. Council, and the copyright owners listed below, give no warranty in relation to the data (including accuracy, reliability, completeness, currency or suitability) presented in these maps and the user uses and relies upon the data in the maps at its own sole risk and liability. Council is not liable for errors or omissions in the flood maps. To the full extent that it is able to do so in law, the Council disclaims all liability (including without limitation, liability in negligence) for any loss, damage or costs (including in direct and consequential loss and damage), caused by or arising from anyone using or relying on the data contained in the flood maps for any purpose whatsoever.

©Brisbane City Council 2023 (Unless stated below)  
Cadastre © 2023 Department of Natural Resources, Mines and Energy  
Nearmap Imagery © 2021 Nearmap Australia Pty Ltd  
StreetPro © 2021 Precisely; © 2021 PSMA Australia Ltd

Prepared by (Jacobs Group (Australia) Pty Ltd) for:  
Brisbane City Council  
City Projects Office  
GPO Box 1434  
Brisbane Qld 4001

For more information  
visit [www.brisbane.qld.gov.au](http://www.brisbane.qld.gov.au)  
or call (07) 3403 8888



*Dedicated to a better Brisbane*

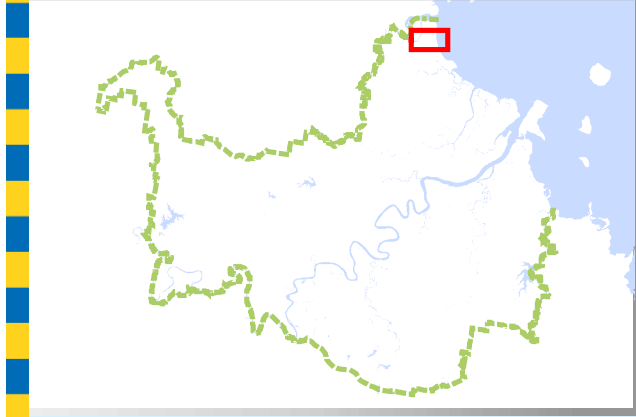
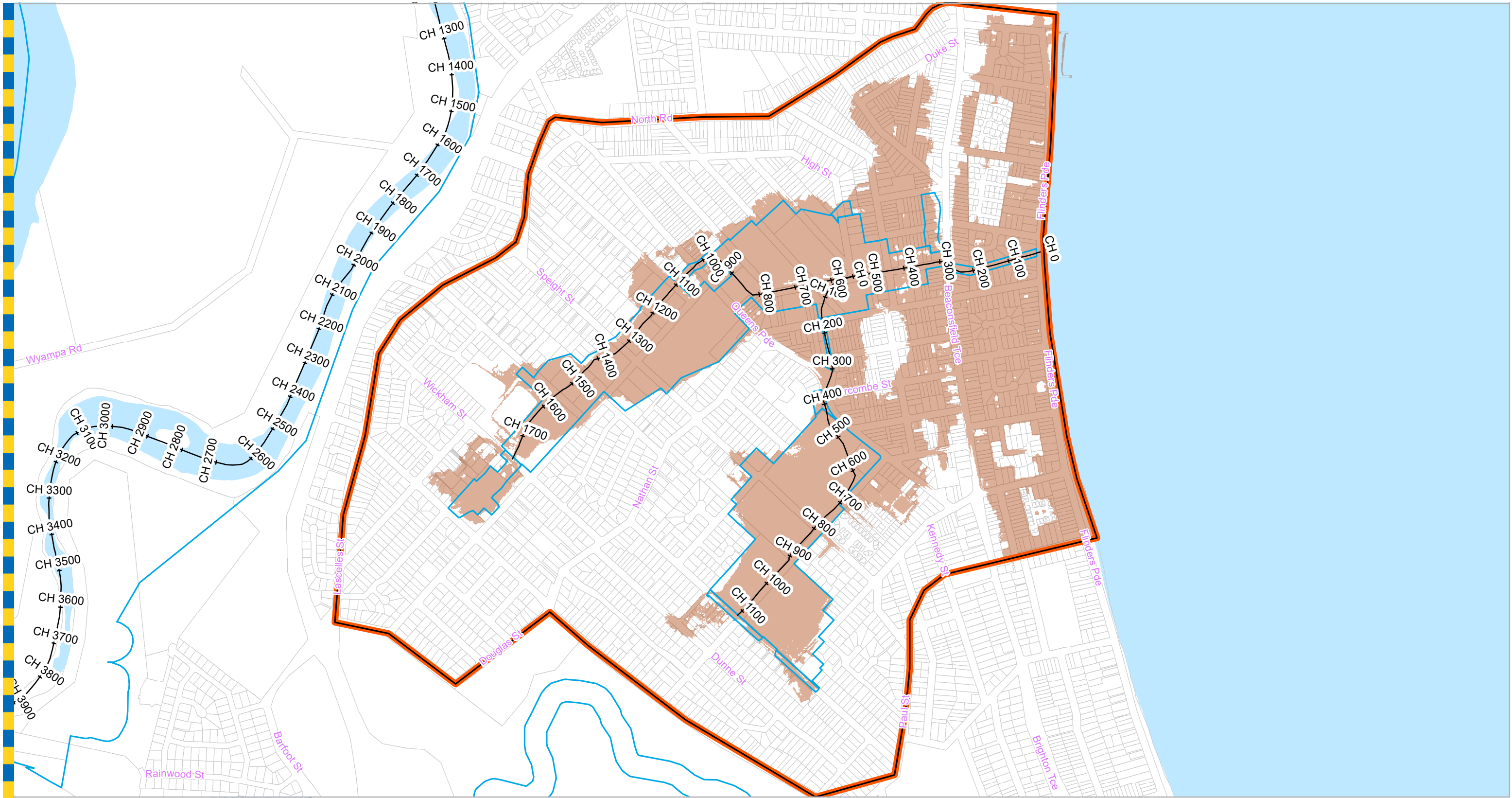
# Brighton Creek

## 1% AEP Flood Extent Map

Climate Change Scenario

**For Information Only - Not Council Policy**





- Legend**
- Extent of Mapping
  - AMTD Line
  - City Plan Waterway Corridors
  - Waterway/Waterbody
  - Flood Inundation Extent

**DATA INFORMATION**

The flood maps must be read in conjunction with the flood study report and interpreted by a qualified professional engineer. The flood maps are based on the best data available to Brisbane City Council ("Council") at the time the maps were developed. Council, and the copyright owners listed below, give no warranty in relation to the data (including accuracy, reliability, completeness, currency or suitability) presented in these maps and the user uses and relies upon the data in the maps at its own sole risk and liability. Council is not liable for errors or omissions in the flood maps. To the full extent that it is able to do so in law, the Council disclaims all liability (including without limitation, liability in negligence) for any loss, damage or costs (including in direct and consequential loss and damage), caused by or arising from anyone using or relying on the data contained in the flood maps for any purpose whatsoever.

©Brisbane City Council 2023 (Unless stated below)  
Cadastre © 2023 Department of Natural Resources, Mines and Energy  
Nearmap Imagery © 2021 Nearmap Australia Pty Ltd  
StreetPro © 2021 Precisely; © 2021 PSMA Australia Ltd

Prepared by (Jacobs Group (Australia) Pty Ltd) for:  
Brisbane City Council  
City Projects Office  
GPO Box 1434  
Brisbane Qld 4001

For more information  
visit [www.brisbane.qld.gov.au](http://www.brisbane.qld.gov.au)  
or call (07) 3403 8888



*Dedicated to a better Brisbane*

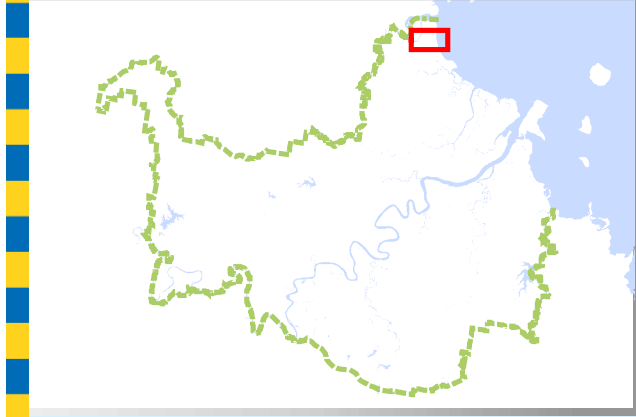
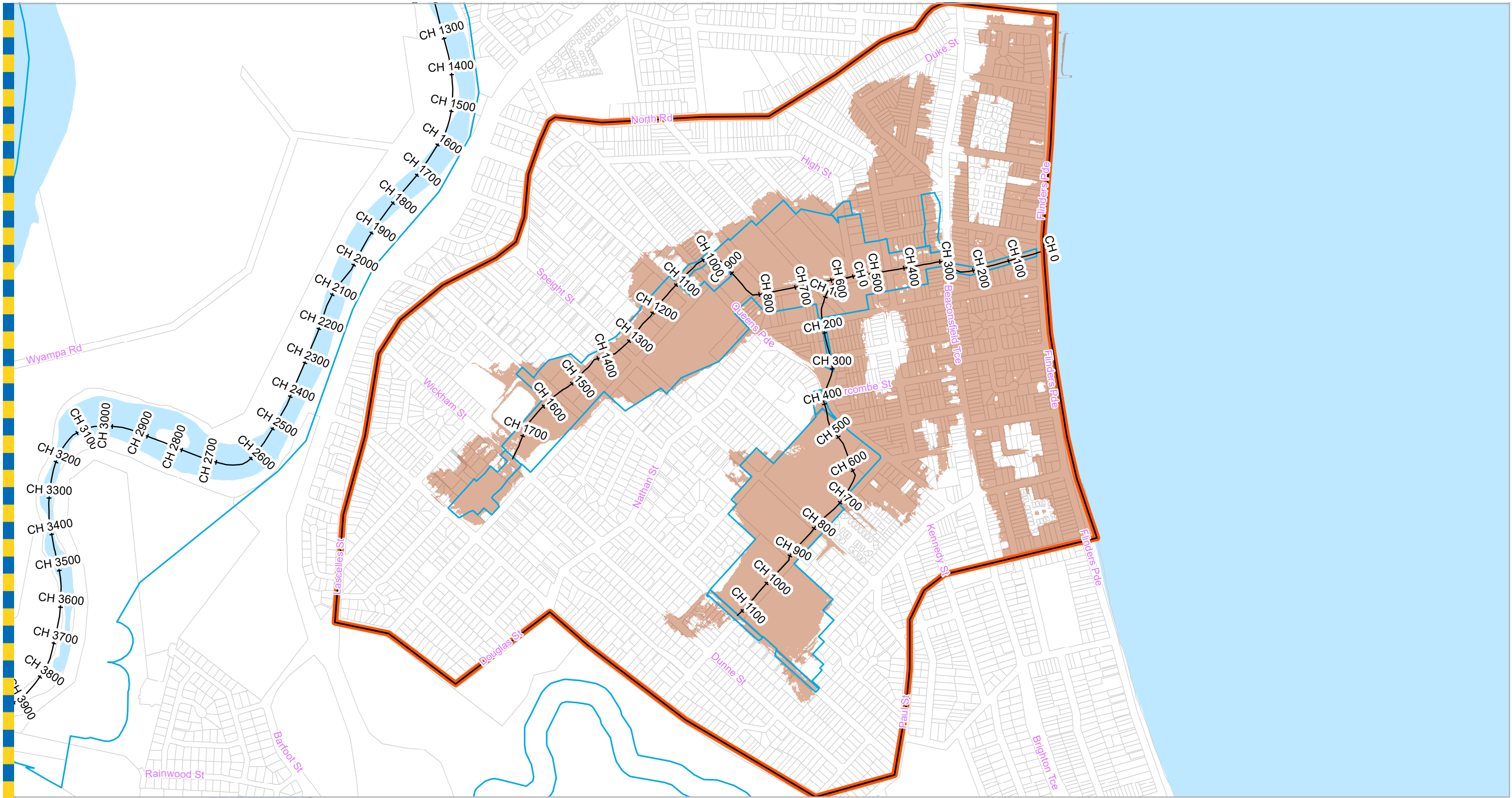
# Brighton Creek

## 0.5% AEP Flood Extent Map

Climate Change Scenario

**For Information Only - Not Council Policy**





- Legend**
- Extent of Mapping
  - AMTD Line
  - City Plan Waterway Corridors
  - Waterway/Waterbody
  - Flood Inundation Extent

**DATA INFORMATION**

The flood maps must be read in conjunction with the flood study report and interpreted by a qualified professional engineer. The flood maps are based on the best data available to Brisbane City Council ("Council") at the time the maps were developed. Council, and the copyright owners listed below, give no warranty in relation to the data (including accuracy, reliability, completeness, currency or suitability) presented in these maps and the user uses and relies upon the data in the maps at its own sole risk and liability. Council is not liable for errors or omissions in the flood maps. To the full extent that it is able to do so in law, the Council disclaims all liability (including without limitation, liability in negligence) for any loss, damage or costs (including in direct and consequential loss and damage), caused by or arising from anyone using or relying on the data contained in the flood maps for any purpose whatsoever.

©Brisbane City Council 2023 (Unless stated below)  
Cadastre © 2023 Department of Natural Resources, Mines and Energy  
Nearmap Imagery © 2021 Nearmap Australia Pty Ltd  
StreetPro © 2021 Precisely; © 2021 PSMA Australia Ltd

Prepared by (Jacobs Group (Australia) Pty Ltd) for:  
Brisbane City Council  
City Projects Office  
GPO Box 1434  
Brisbane Qld 4001

For more information  
visit [www.brisbane.qld.gov.au](http://www.brisbane.qld.gov.au)  
or call (07) 3403 8888

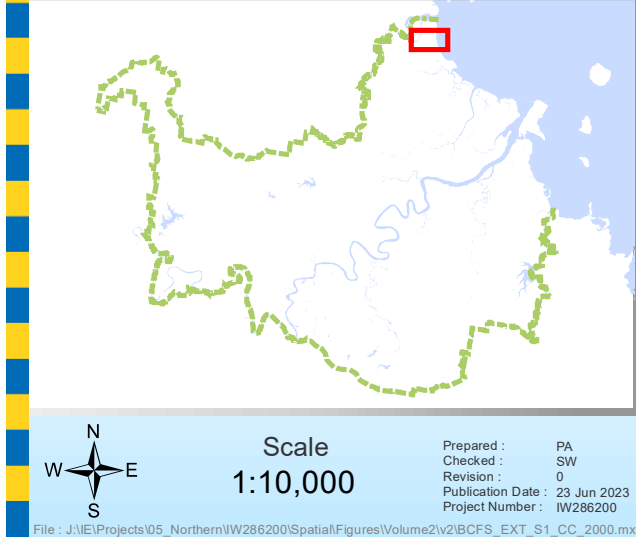
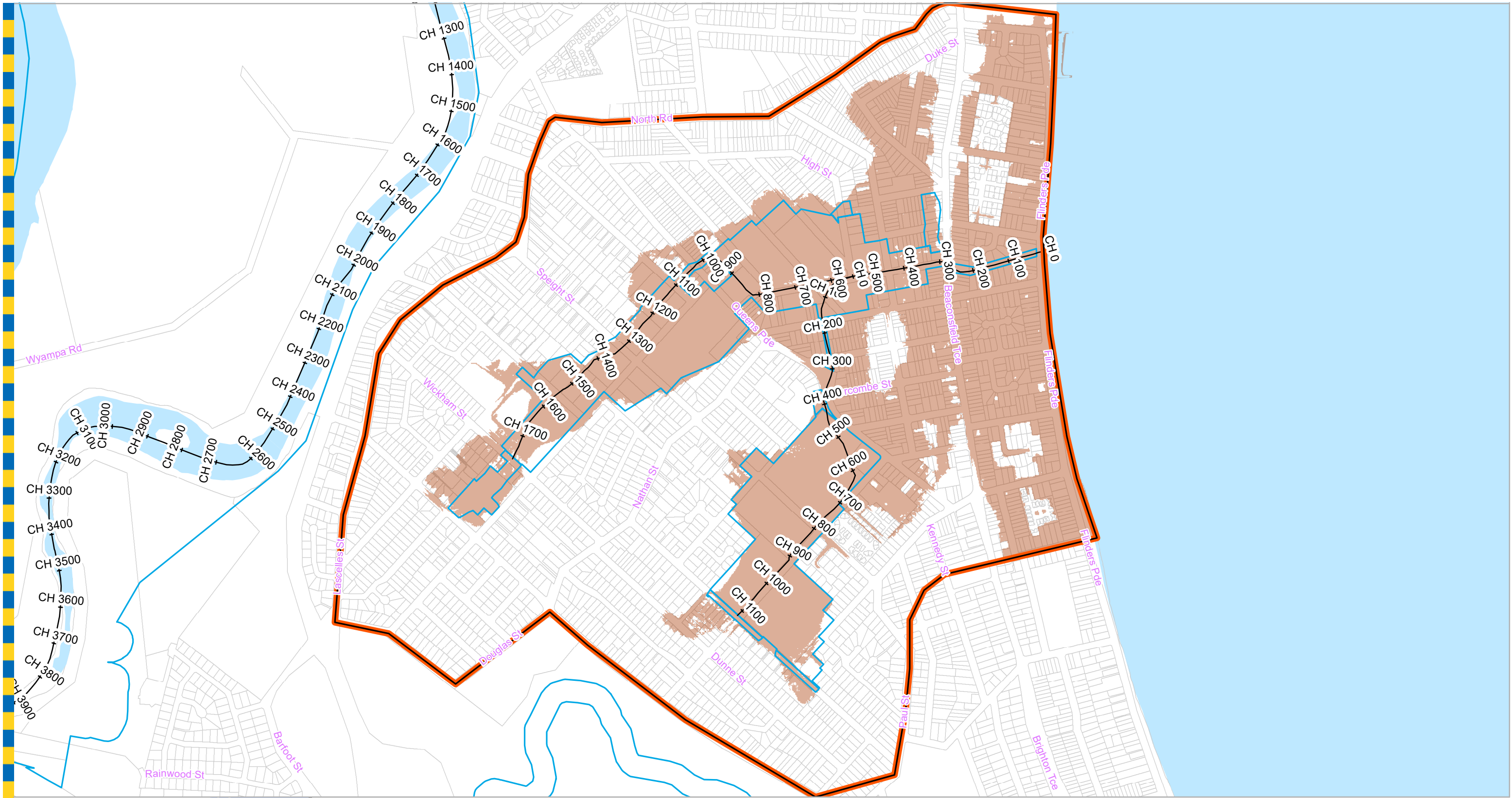


*Dedicated to a better Brisbane*

## Brighton Creek 0.2% AEP Flood Extent Map Climate Change Scenario

**For Information Only - Not Council Policy**





- Legend**
- Extent of Mapping
  - AMTD Line
  - City Plan Waterway Corridors
  - Waterway/Waterbody
  - Flood Inundation Extent

**DATA INFORMATION**

The flood maps must be read in conjunction with the flood study report and interpreted by a qualified professional engineer. The flood maps are based on the best data available to Brisbane City Council ("Council") at the time the maps were developed. Council, and the copyright owners listed below, give no warranty in relation to the data (including accuracy, reliability, completeness, currency or suitability) presented in these maps and the user uses and relies upon the data in the maps at its own sole risk and liability. Council is not liable for errors or omissions in the flood maps. To the full extent that it is able to do so in law, the Council disclaims all liability (including without limitation, liability in negligence) for any loss, damage or costs (including in direct and consequential loss and damage), caused by or arising from anyone using or relying on the data contained in the flood maps for any purpose whatsoever.

©Brisbane City Council 2023 (Unless stated below)  
Cadastre © 2023 Department of Natural Resources, Mines and Energy  
Nearmap Imagery © 2021 Nearmap Australia Pty Ltd  
StreetPro © 2021 Precisely; © 2021 PSMA Australia Ltd

Prepared by (Jacobs Group (Australia) Pty Ltd) for:  
Brisbane City Council  
City Projects Office  
GPO Box 1434  
Brisbane Qld 4001

For more information  
visit [www.brisbane.qld.gov.au](http://www.brisbane.qld.gov.au)  
or call (07) 3403 8888



*Dedicated to a better Brisbane*

# Brighton Creek

## 0.05% AEP Flood Extent Map

Climate Change Scenario

**For Information Only - Not Council Policy**