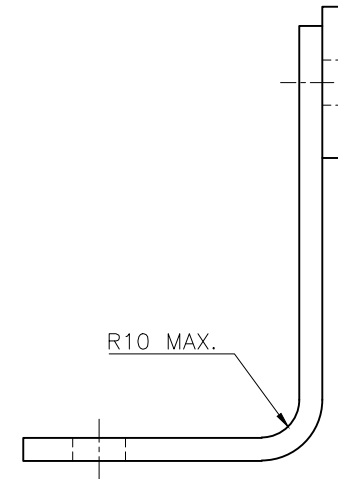
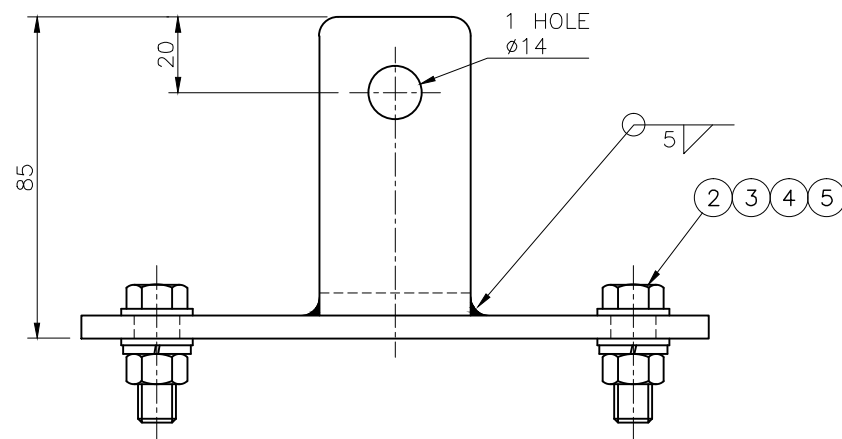


TOP VIEW



SIDE VIEW



FRONT VIEW

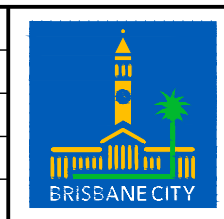
NOTES:

1. ALL BURRS, SHARP EDGES AND WELDING SCALE TO BE REMOVED BEFORE GALVANISING.
2. GENERAL TOLERANCE ± 1.0 AND FOR HOLE CENTRES & HOLES ± 0.5
3. ON DELIVERY ITEMS 2, 3, 4 & 5 TO BE SUPPLIED FITTED AS SHOWN.
4. ALL DIMENSIONS IN MILLIMETRES (U.N.O.).

ITEM	DESCRIPTION	MATERIAL	FINISH	QTY	
5	SPRING WASHER M10	TO AS1968	STAINLESS STEEL	NATURAL	2
4	FLAT WASHER M10	TO AS1237	STAINLESS STEEL	NATURAL	4
3	HEX NUT M10	TO AS1112	STAINLESS STEEL	NATURAL	2
2	HEX HEAD SCREW M10x30	TO AS1111	STAINLESS STEEL	NATURAL	2
1	BRACKET 40x6 THICK	TO AS3679	MILD STEEL	HD GALV TO AS/NZS4680	1

ISSUE	AMENDMENT	DRAWN DATE	CHK'D DATE	APPR'D DATE
A	Drawing Converted from UMS Series April 2014	APR '14	APR '14	APR '14

DRAWING AUTHORISED FOR PUBLICATION			
DESIGN	Std Dwgs WG	DATE	April '09
DRAWN	CPD - P&D	DATE	April '09
CHECKED	I. Condric	DATE	Dec '10
DRAWING FILENAME	BSD-4105.dwg		
ASSOCIATED PLANS	SUPERSEDES UMS-600-044		



BRISBANE CITY COUNCIL STANDARD DRAWING

SCALE: NOT TO SCALE

BSD-4105

ORIGINAL SIZE: A3 REVISION: A

MOUNTING BRACKET FOR AUDIO TACTILE HOUSING ON MAST ARMS & TYPE 6 POSTS