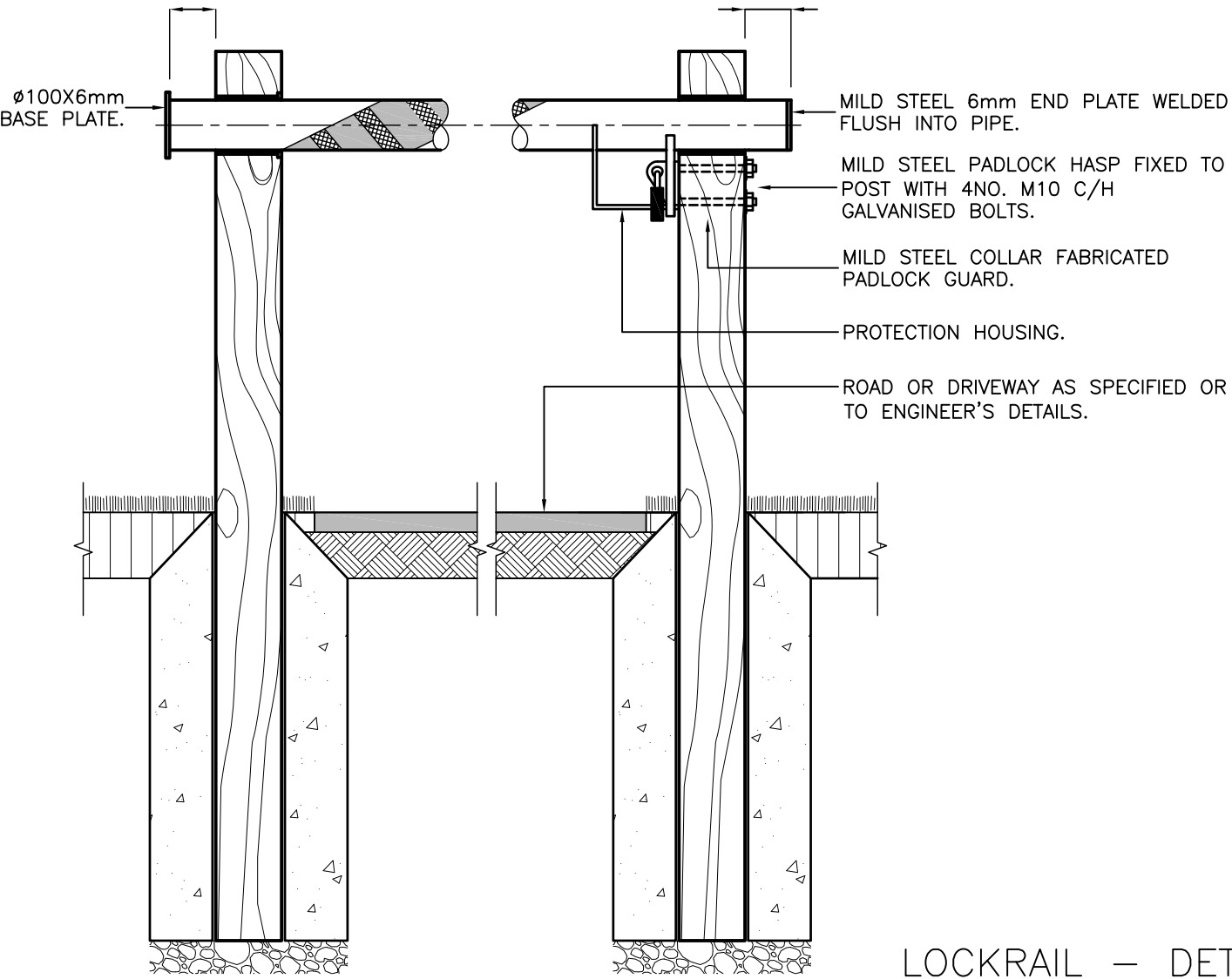


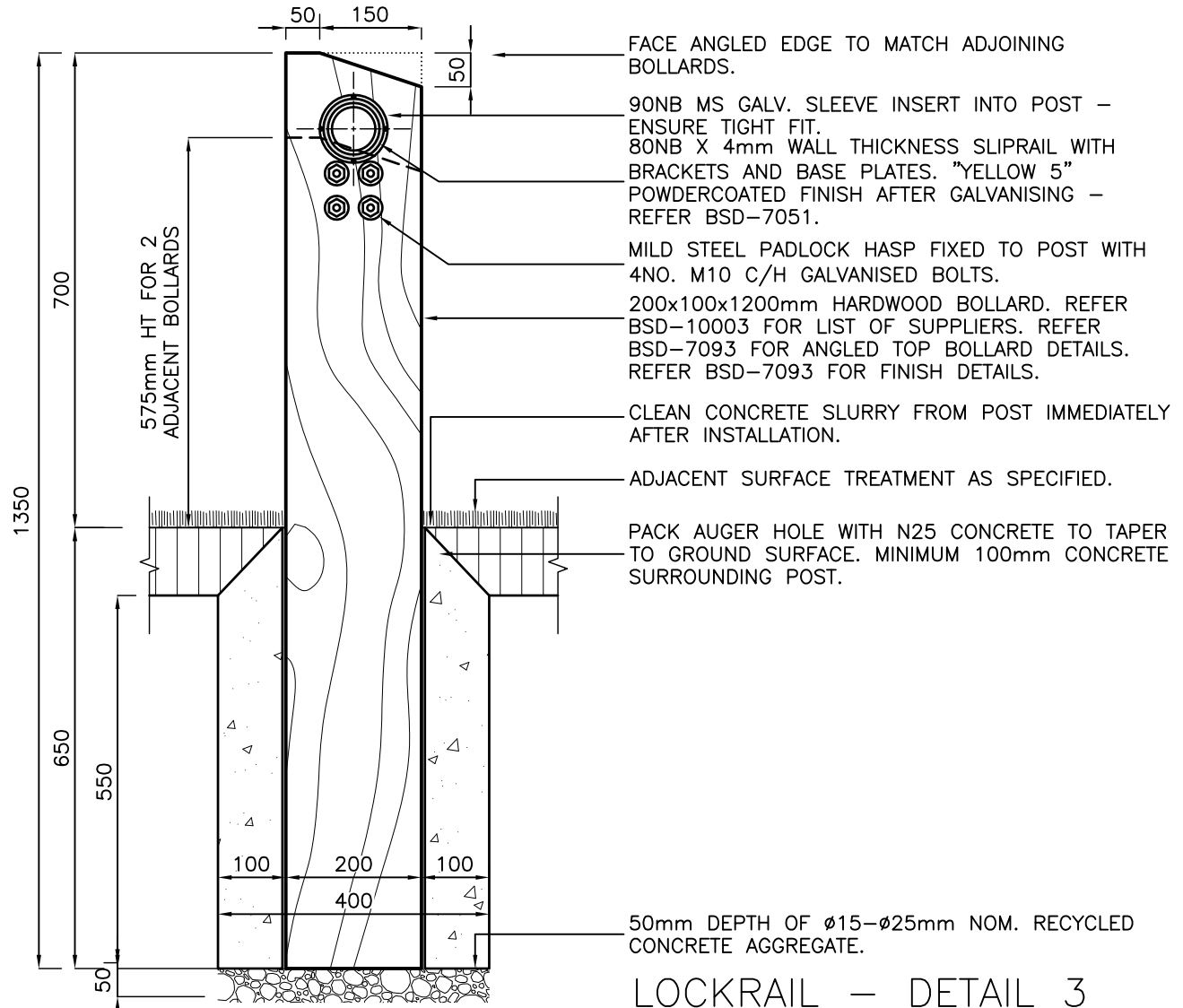
REFER TO BSD-7051 FOR ASSOCIATED SPECIFICATIONS.

MIN. 70mm OVERHANG FOR SAFE OPERATION

MIN. 70mm OVERHANG FOR SAFE OPERATION



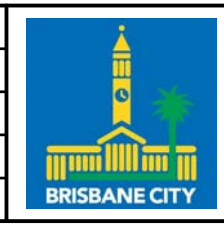
LOCKRAIL - DETAIL 2
SCALE: 1:10



LOCKRAIL - DETAIL 3
SCALE: 1:10

ISSUE	AMENDMENT	DRAWN DATE	CHK'D DATE	APPR'D DATE
A	Drawing Converted From UMS Series April 2014	APR '14	APR '14	APR '14

DRAWING AUTHORISED FOR PUBLICATION			
PAUL COTTON SIGNATURE ON ORIGINAL DATED 03/09/04			
MANAGER INFRASTRUCTURE MANAGEMENT			
R.P.E.Q: 2546			
DESIGN APPROVED			
LAUREN TEMPLEMAN SIGNATURE ON ORIGINAL DATED 31/08/04			
DESIGN	Std Dwgs WG	DATE	OCT '13
DRAWN	CPO - P&D	DATE	OCT '13
CHECKED	UMD - E&P & IMB	DATE	OCT '13
DRAWING FILENAME	BSD-7055.dwg		
ASSOCIATED PLANS	SUPERSEDES UMS-730		



BRISBANE CITY COUNCIL STANDARD DRAWING	
ENTRANCE BARRIER - LOCKRAIL WITH TIMBER POSTS	
SCALE	AS SHOWN
DWG No.	BSD-7055
ORIGINAL SIZE	A3
REVISION	A