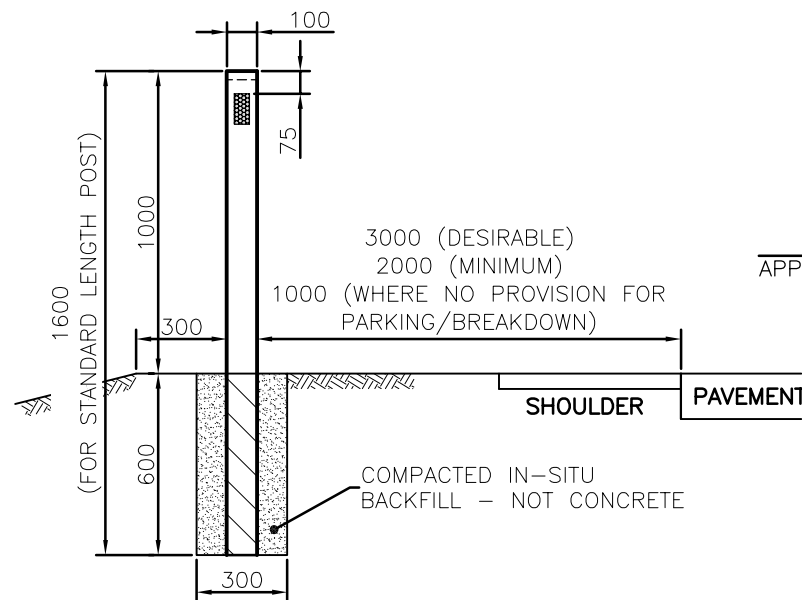
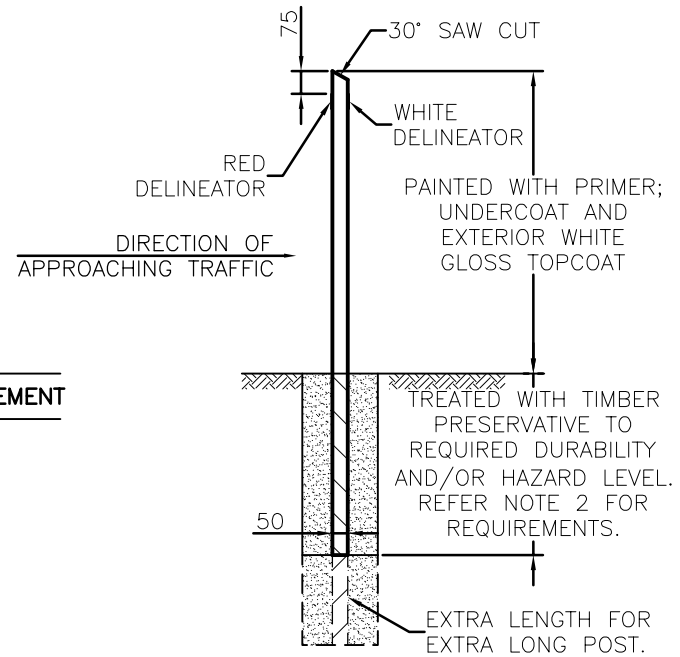


FRONT ELEVATION –
EXTRA LONG TIMBER POST



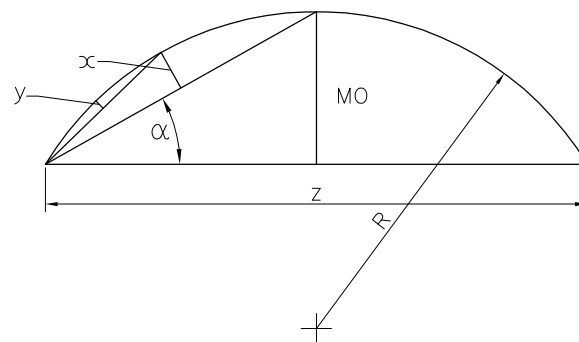
FRONT ELEVATION –
STANDARD TIMBER POST



SIDE ELEVATION –
TIMBER POST

NOTES:

1. ALTERNATIVE PRODUCTS WILL BE CONSIDERED FOR APPROVAL BY MANAGER CITY ASSETS UPON RECEIPT OF FORMAL APPLICATION.
2. ALL POST MATERIALS, INCLUDING TIMBER PRESERVATION, ARE TO COMPLY WITH QUEENSLAND DEPARTMENT OF TRANSPORT AND MAIN ROADS (QDTMR) SPECIFICATION MRTS 11.14.
3. WHERE GUIDE POSTS ARE INSTALLED ON FLOODWAYS, POST SHALL BE TUBULAR STEEL AT MAXIMUM 25m SPACING IN PAIRS.
4. POSTS TO BE ERECTED IN PAIRS, ONE EACH SIDE OF THE ROAD FORMATION WHERE KERB AND CHANNEL DO NOT EXIST.
5. DELINEATORS ARE TO COMPLY WITH QDTMR SPECIFICATION MRTS 11.14 AND ARE TO BE LOCATED WITH RED FACING TRAFFIC ON THE LEFT SIDE AND WHITE FACING TRAFFIC ON RIGHT SIDE.
6. GUIDE POST SHALL BE POSITIONED:
 - ON STRAIGHTS OR CURVES AS PER TABLE PROVIDED;
 - SO THAT ONE PAIR IS ALWAYS VISIBLE ON EACH SIDE OF THE TOP OF THE CREST ON EACH SIDE OF THE ROAD;
 - ADJACENT TO ANY CHANGE OF ROAD ALIGNMENT OR HAZARD (eg. TAPERS, BRIDGES, CULVERTS).
7. WHERE POSTS ARE PLACED OVER CRESTS, THE SPACING SHALL BE ARRANGED SUCH THAT A MINIMUM OF 2 PAIRS ARE VISIBLE AT ALL TIMES FROM FROM A DRIVER'S EYE HEIGHT OF 1.15m.
8. DELINEATORS TO BE FIXED TO GUARDRAIL AT EACH END POST AND AT A MAXIMUM SPACING OF 16m. CLOSER SPACING AS PER TABLE ABOVE MAY BE REQUIRED IN WHICH CASE DELINEATORS ARE TO BE PLACED ON THE NEAREST POST.
9. SPACING AND INSTALLATION TO CONFORM TO REQUIREMENTS, OF THE QUEENSLAND MANUAL OF UNIFORM TRAFFIC CONTROL DEVICES (MUTCD).
10. DIMENSIONS IN MILLIMETRES (UNO).



1. $R = \frac{Z}{2} / \sin 2\alpha$; $\alpha = \tan^{-1} 2 \left(\frac{MO}{Z} \right)$
2. $x = \frac{MO}{4}$; $y = \frac{MO}{16}$

MID ORDINATE DIAGRAM

1. USED FOR OBTAINING THE RADIUS OF A CURVE AFTER MEASURING MO & Z.
2. USED FOR SETTING OUT THE CURVE AFTER OBTAINING THE RADIUS

RADIUS (m)	SPACING (m)	
	OUTSIDE OF CURVE	INSIDE OF CURVE
<100	6	12
100-199	10	20
200-299	15	30
300-399	20	40
400-599	30	60
600-799	40	60
800-1199	60	60
1200-2000	90	90
>2000 (incl. straights)	150	150

SPACING

SPACING FOR SPECIAL CASES

FLOOD WAYS:- 25m FOR FLOOD WAYS < 120m LONG.
50m FOR FLOOD WAYS > 120m LONG.

NARROW FORMATIONS:- 20m FOR SHORT HIGH FILLS OR DEEP DRAINAGE DITCHES.

STANDARD TIMBER POSTS

- 1600 MIN.x100x50 HARDWOOD WITH 6 ARRIS AROUND EXPOSED PERIMETER OF POST. EXTRA LENGTH AS REQUIRED TO SUIT LOCATION.

				DRAWING AUTHORISED FOR PUBLICATION B. BALL SIGNATURE ON ORIGINAL DATED 29/06/01 R.P.E.Q: 3852				DESIGN	Std Dwgs Group	DATE	APRIL '01		BRISBANE CITY COUNCIL STANDARD DRAWING			
				ASSET ENGINEERING MANAGER STRATEGIC ASSET MANAGEMENT				DRAWN	CITY DESIGN	DATE	APRIL '01					
				DESIGN APPROVED B. HANSEN SIGNATURE ON ORIGINAL DATED 27/06/01				CHECKED	M. STEER	DATE	MAY '01					
A	Drawing Converted from UMS Series April 2014			APR '14	APR '14	APR '14					ROAD EDGE GUIDE POSTS		SCALE	NOT TO SCALE		
ISSUE	AMENDMENT			DRAWN DATE	CHK'D DATE	APPR'D DATE	PRINCIPAL ASSET OFFICER ROADS & DRAINAGE						DWG No.	BSD-7121	ORIGINAL SIZE	A3