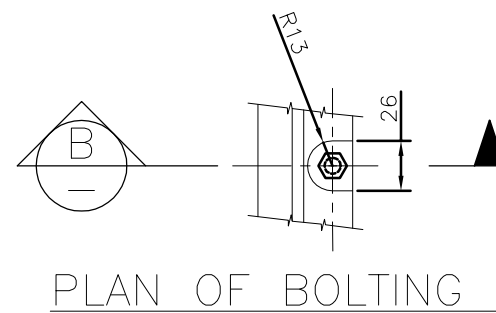


RISER DETAILS
(REFER TO 35mm RISER FOR TYPICAL DIMENSIONS FOR ALL RISERS)



NOTES:

- ALL EDGES TO BE SQUARE.
- CASTING TO BE FREE OF BURRS AND PITS.
- MATERIAL**
DUCTILE CAST IRON
TENSILE STRENGTH: 600-3 (AS 1831)
HARDNESS: 145-185 (HB)
DESIGN LOAD = 210kN (AS 3996)
MASS = VARIES
- TOLERANCES**
CAST SIZE: ±1.00mm
ANGLE PROFILE: ±0.25°
MACHINED SIZE: ±0.125mm
OVERALL DIAMETER OF COVER: +0mm-0.25mm
DRY FILM THICKNESS (DFT) OF COATING: 50µm
- MACHINE SURFACE SYMBOL: 3.2✓
- ALL MACHINED SURFACES SHALL HAVE A COATING APPROVED AS FIT FOR THE PURPOSE OF PROVIDING A RUST PROOF, NON-STICK AND GAS/WATER PROOF JOINT. (HAVTEC-HS1 OR SIMILAR).
- FOUR (4) M8 COARSE THREAD STAINLESS STEEL BOLTS MUST BE SUPPLIED AND USED TO FIX RISER TO FRAME. WHERE COVER IS REQUIRED TO BE BOLTED DOWN, MIN. TWO EXTRA LENGTH BOLTS MUST BE USED TO SECURE COVER AND RISER TO FRAME, WITH TWO REMAINING BOLTS SECURING RISER TO FRAME. REFER TABLE 1 FOR BOLT LENGTHS.
- REFER BSD-8033 FOR COVER DETAIL.
- DIMENSIONS IN MILLIMETRES (UNO).

NOTE:
GAUGE SHALL BE USED TO CHECK P.C.D. AND TAPPED HOLE POSITION

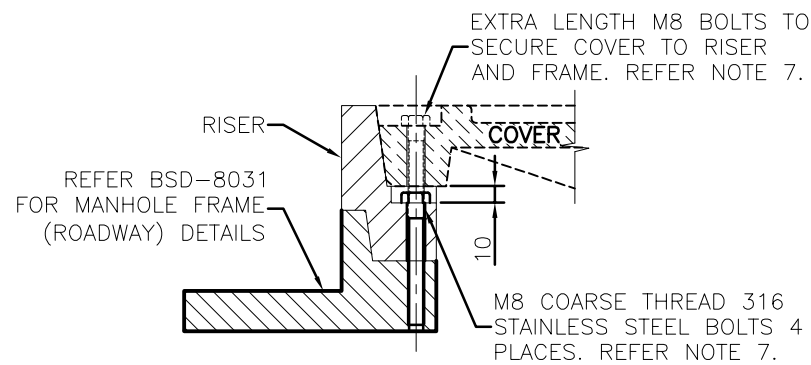
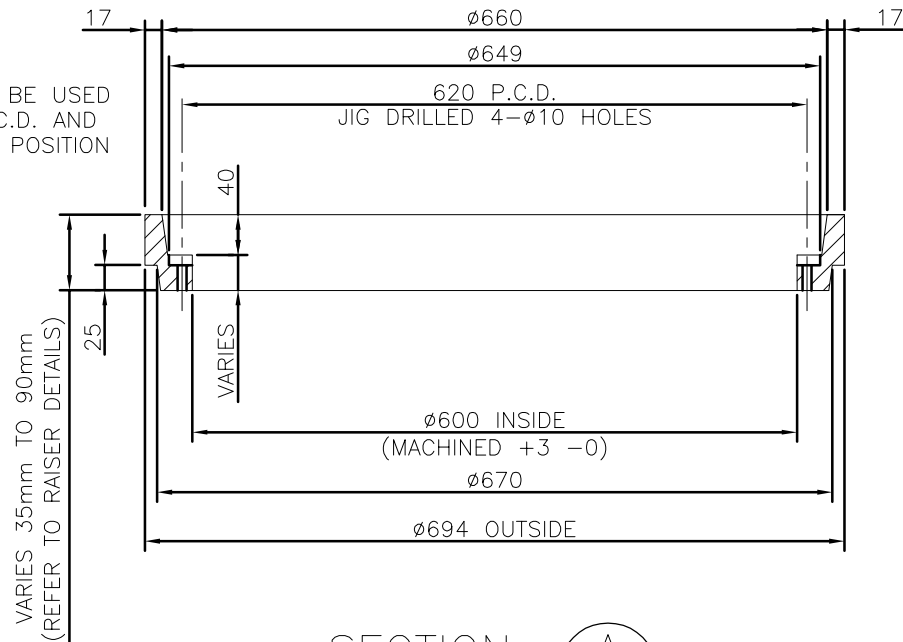


TABLE 1: BOLT LENGTH

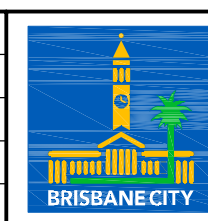
RISER HEIGHT	BOLT LENGTH	
	FOR RISER ONLY	FOR RISER WITH COVER
35	60	100
60	90	130
75	110	150
90	115	160

SPECIAL NOTE - ROADWAY USE
COVERS, FRAMES AND 35mm RISER RINGS (MIN.) TO BE SUPPLIED ASSEMBLED.
(RISER MUST BE USED WITH FRAME WHEN USED WITH ROADWAY MANHOLE COVER)

ISSUE	AMENDMENT	DRAWN DATE	CHK'D DATE	APPR'D DATE
A	ORIGINAL ISSUE	OCT '13	OCT '13	OCT '13

DRAWING AUTHORISED FOR PUBLICATION
B.BALL SIGNATURE ON ORIGINAL
DATED 29/06/01
MANAGER ASSET SUPPORT - R.P.E.O. 3852
DESIGN APPROVED
B.HANSEN SIGNATURE ON ORIGINAL
DATED 27/06/01
PRINCIPAL ASSET OFFICER
ROADS AND DRAINAGE

DESIGN	ST DWG GROUP	DATE	APR '01
DRAWN	CITY DESIGN	DATE	APR '01
CHECKED	M.STEER	DATE	MAY '01
DRAWING FILENAME	BSD-8032.dwg		
ASSOCIATED PLANS	SUPERSEDES UMS-326		



BRISBANE CITY COUNCIL STANDARD DRAWING

RISER DETAILS (ROADWAY)

SCALE: NOT TO SCALE
DWG No. **BSD-8032**
ORIGINAL SIZE: A3
REVISION: A