

STANDARDS

DESIGNED IN ACCORDANCE WITH, AND FABRICATION TO MEET THE FOLLOWING STANDARDS:

- AS1428.4.1:2009, TACTILE GROUND SURFACE INDICATORS FOR THE ORIENTATION OF PEOPLE WITH VISION IMPAIRMENT.
- AS1627.4 METAL FINISHING – PREPARATION AND PRE-TREATMENT OF SURFACES – ABRASIVE BLAST CLEANING OF STEEL.
- AS2312:2002/AMDT 1:2004, GUIDE TO PROTECTION OF IRON AND STEEL AGAINST EXTERIOR ATMOSPHERIC CORROSION, 1994.
- GUIDE TO ENGINEERING PRACTICE, 'PEDESTRIANS', PART 13, AUSTRROADS. AUSTRALIAN ROAD RULES , 1999, WWW.NRTC.GOV.AU
- AS4506 –2005, METAL FINISHING– THERMOSET POWDER COATINGS.
- AS4680:2006, HOT DIP GALVANISING.
- AS1742.9–2000, MANUAL OF UNIFORM TRAFFIC CONTROL DEVICES, 'BICYCLE FACILITIES'.
- GUIDE TO ENGINEERING PRACTICE, 'BICYCLES', PART 14, AUSTRROADS. AUSTRALIAN ROAD RULES , 1999, WWW.NRTC.GOV.AU
- AS2890.3–1993 PARKING FACILITIES PART 3
- AS 1742.9– 2000 MANUAL OF UNIFORM TRAFFIC CONTROL DEVICES PART 9: BIKE FACILITIES

NOTES

- WELDING TO BE ACCORDANCE TO AS1554.1 CAT GP WELDING, ALL SHARP EDGES & BURRS REMOVED.
- PART SHOULD BE SUPPLIED CLEAN AND FREE FROM MARKS, BURRS, SCUFFS, DISTORTION AND WARPAGE.
- ENSURE ANTI-SEIZE IS ON ALL NUTS AND BOLTS PRIOR TO ASSEMBLY.
- DRAWING TO AS1100 DRAWING STANDARDS.
- 316 S.S AND 316 S.S FASTENERS TO BE USED THROUGHOUT FOR COASTAL INSTALLATIONS OR ANY ENVIRONMENT WITH HIGH CORROSION.
- ALL TOLERANCES ± 1.5mm UNLESS OTHERWISE SPECIFIED.

MATERIAL

- MATERIAL: SEE COMPONENT DRAWING
- COLOUR: SEE COMPONENT DRAWING
- FINISH: SEE COMPONENT DRAWING

STRUCTURAL DESIGN REVIEWED AND CERTIFIED FOR ISSUE

NAME: B.C. PLANT RPEQ: 8807
 SIGNATURE: ON ORIGINAL DATE: 28/ 6 /12

ITEM NO.	DESCRIPTION	QTY.
1	Single Bike Rack	1
2	M10 304 Stainless Steel Washer	8
3	M10 304 Stainless Steel Dome Nut	8

-ENSURE SUFFICIENT CLEARANCE BETWEEN END OF EXPANSION BOLT THREAD AND INSIDE OF DOME NUT CAP PRIOR TO ASSEMBLY
 -RECOMMENDED ASSEMBLY TORQUE FOR M10 DOME NUT =17N.M (REFF AS1111 PROPERTY CLASS 4.6 OR EQUIVALENT, COMMERCIAL LOW TENSILE BOLTS.)

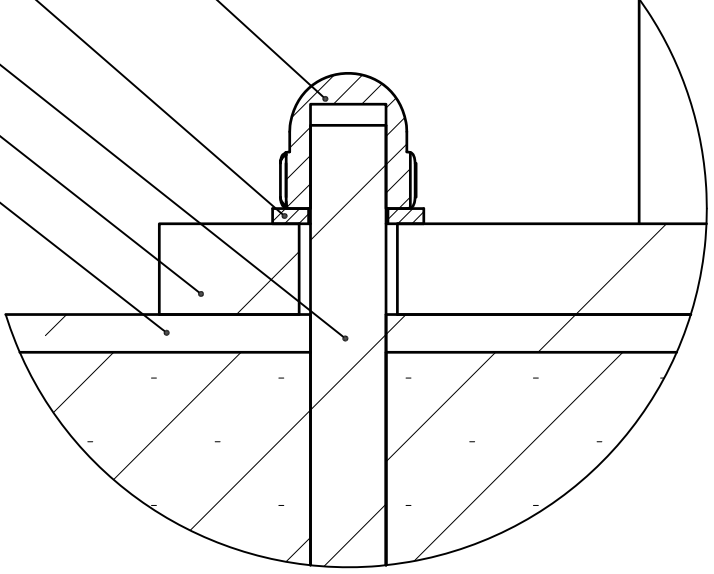
M10 DOME NUT (304 S.S)

M10 WASHER (304 S.S)

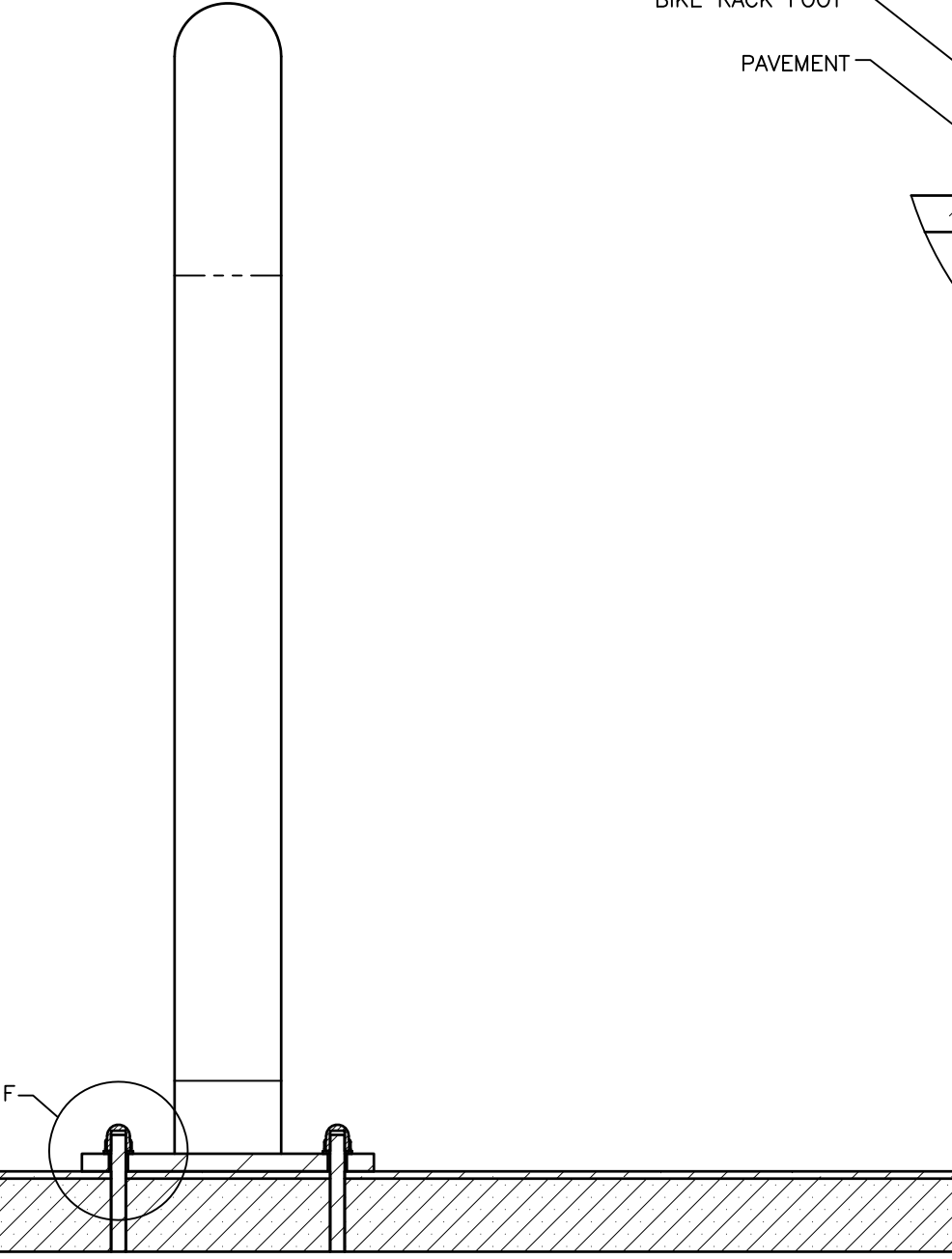
BOLT FIXED TO PAVEMENT (M10 x 150mm EXPANSION BOLT)

BIKE RACK FOOT

PAVEMENT




DETAIL F
INSTALLATION DETAIL
SCALE 1 : 1



SECTION VIEW OF INSTALLATION

DRAWING AUTHORISED FOR PUBLICATION INGA CONDRIĆ AUTHORIZED 15/04/2014				DESIGN	Std Dwgs WG	DATE	June '12
ASSET ENGINEERING MANAGER STRATEGIC ASSET MANAGEMENT				DRAWN	CPO - P&D	DATE	June '12
DESIGN APPROVED				CHECKED	V.M	DATE	April '13
VICKI MARTIN SIGNATURE ON ORIGINAL				DRAWING FILENAME	BSD-5051-2.dwg		
PRINCIPAL PLANNING OFFICER URBAN DESIGN				ASSOCIATED PLANS	SUPERSEDES UMS-566-2		
A	Drawing Converted from UMS Series April 2014	APR '14	APR '14	APR '14			
ISSUE	AMENDMENT	DRAWN DATE	CHK'D DATE	APPR'D DATE			

BRISBANE CITY COUNCIL STANDARD DRAWING



**SINGLE BIKE RACK
SHEET 2 OF 2
INSTALLATION**

SCALE: NOT TO SCALE

DWG No. **BSD-5051**

ORIGINAL SIZE: A3A3 REVISION: A