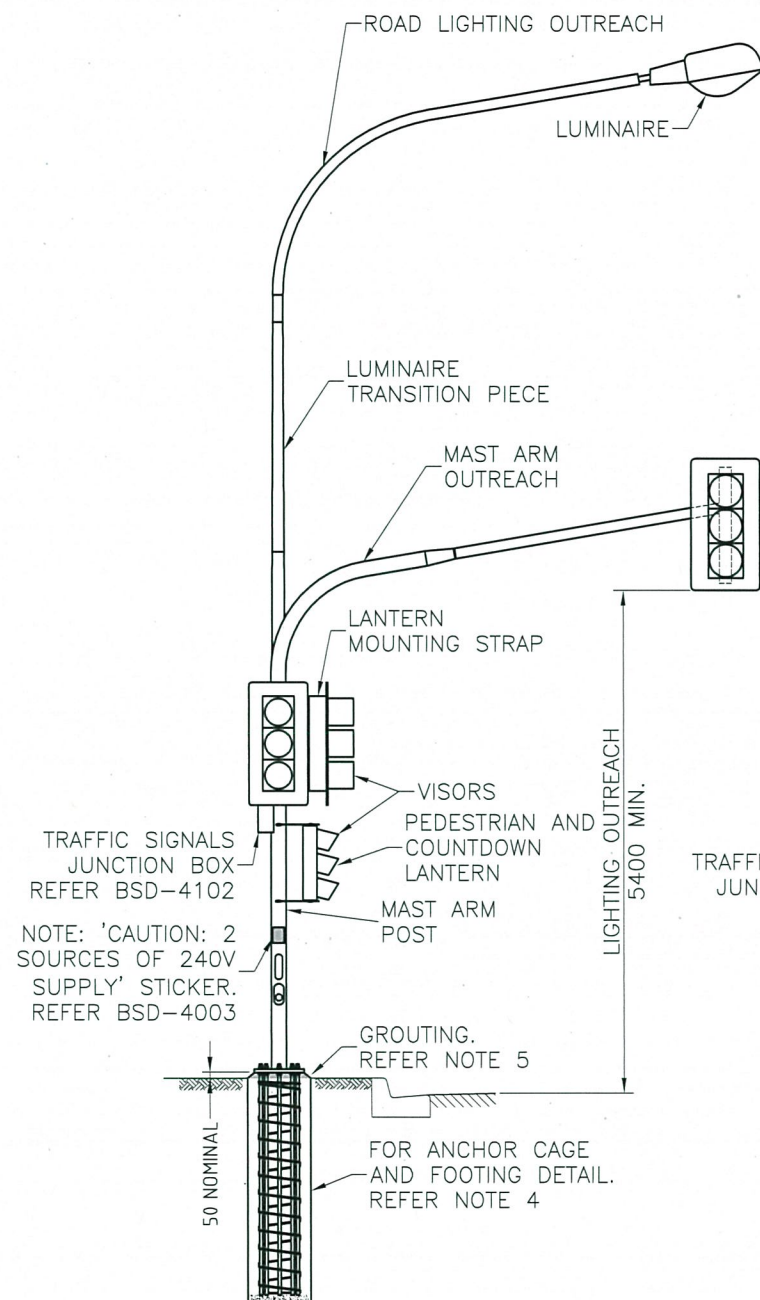
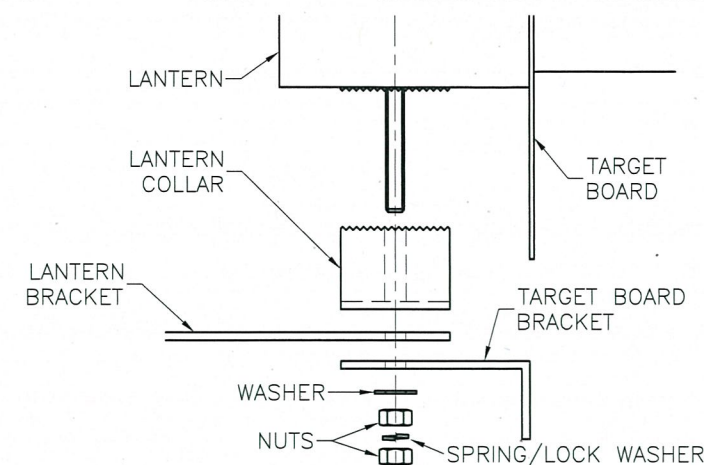


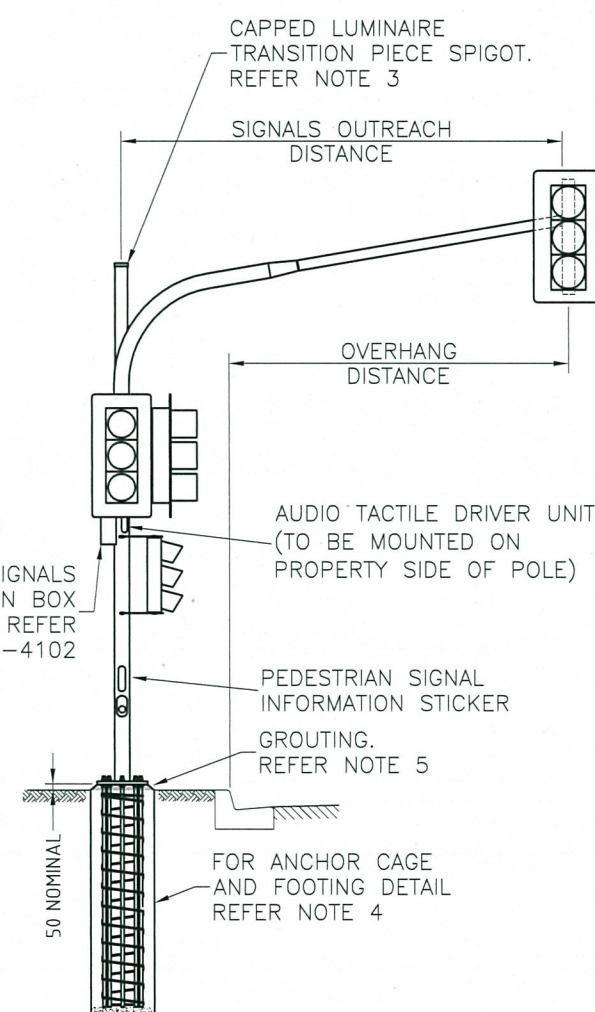
**JOINT USE TRAFFIC SIGNAL &  
ROAD LIGHT POLE**



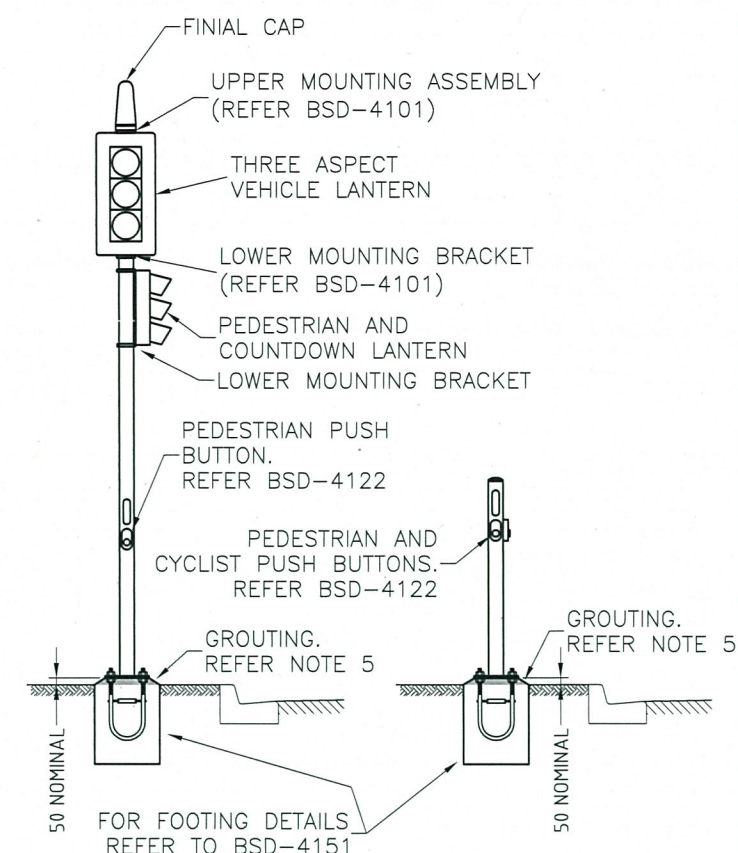
**COMBINED JOINT USE TRAFFIC  
SIGNAL & ROAD LIGHT MAST ARM**  
(MAINTAINED BY BCC)



**ATTACHMENT OF LANTERN  
TO MOUNTING BRACKET**



**TRAFFIC SIGNAL  
MAST ARMS**



**TRAFFIC SIGNAL  
POST**

**PUSH BUTTON  
POST**

**NOTES:**

1. SEE AS2339 SECTION 3.2 FIG.3.2 FOR ARRANGEMENT OF FASTENERS USED FOR THE ATTACHMENT OF LANTERN MOUNTING STRAPS TO POST.
2. SEE EXPLODED VIEW FOR ATTACHMENT OF LANTERN TO MOUNTING BRACKET. LOCKING MECHANISM NOT TO BE CIRCUMVENTED.
3. TRAFFIC SIGNAL MAST ARM POLE MAY BE CONVERTED TO COMBINED JOINT USE TRAFFIC SIGNAL AND ROAD LIGHT MAST ARM BY REMOVING SPIGOT CAP AND INSTALLING LUMINAIRE TRANSITION PIECE AND LIGHTING OUTREACH.
4. FOOTINGS REQUIREMENT FOR TRAFFIC SIGNAL MAST ARMS:
  - FOR 2.5m & 5.0m MAST ARMS: USE BCC STD DWG BSD-4154;
  - FOR 6.0m & 6.5m MAST ARMS: USE TMR DWG 1403.
  - FOR 8.5m & 11.0m MAST ARMS: USE BCC STD DWG BSD-4155;
5. MIX SAND/CEMENT GROUT IN A 3:1 RATIO BY VOLUME. ADD ENOUGH WATER TO GIVE A WORKABLE MIX. PACK THE MIX BENEATH THE BASE PLATE. ON SQUARE BASE PLATE POLES, CHAMFER SIDES OF PACKED GROUT TO GROUND AT 45°.
6. ALL DIMENSIONS IN MILLIMETRES (U.N.O.).

B	POST & J/U FOOTINGS CHANGED. LOCK WASHER ADDED TO LANTERN MOUNTING BRACKET	25/5/14	25/5/14	25/5/14
A	Drawing Converted from UMS Series April 2014	APR '14	APR '14	APR '14
ISSUE	AMENDMENT	DRAWN DATE	CHK'D DATE	APPR'D DATE

DRAWING AUTHORIZED FOR PUBLICATION B. BALL SIGNATURE ON ORIGINAL DATED 29/6/01
MANAGER ASSET SUPPORT - R.P.E.Q. 3 8 5 2
DESIGN APPROVED K. MEMORY SIGNATURE ON ORIGINAL DATED 27/6/01
SENIOR PROGRAM OFFICER NETWORK OPERATIONS - R.P.E.Q. 4 7 6 1

DESIGN	Std Dwgs WG	DATE	April '01
DRAWN	CPO - P&D	DATE	April '01
CHECKED	R. WILSON	DATE	May '01
DRAWING FILENAME	BSD-4121.dwg		
ASSOCIATED PLANS	SUPERSEDES UMS-600-050		



<b>BRISBANE CITY COUNCIL STANDARD DRAWING</b>	
TRAFFIC SIGNAL POST & POLE INSTALLATION	
SCALE NOT TO SCALE	DWG No. BSD-4121
ORIGINAL SIZE A3	REVISION B