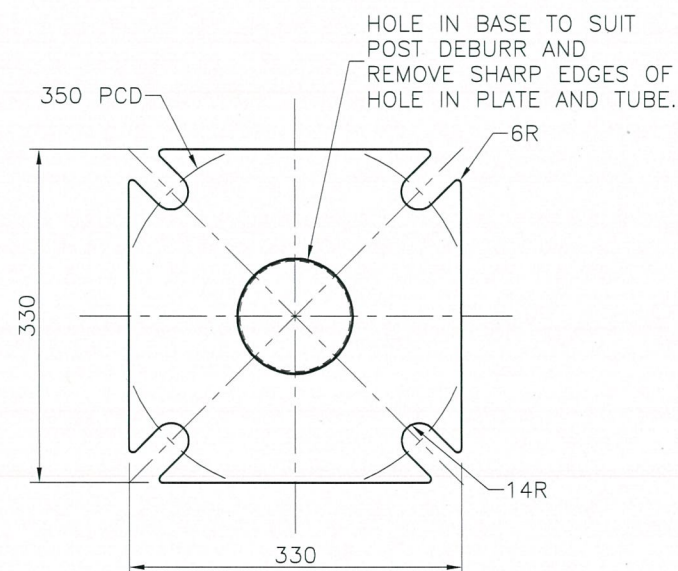
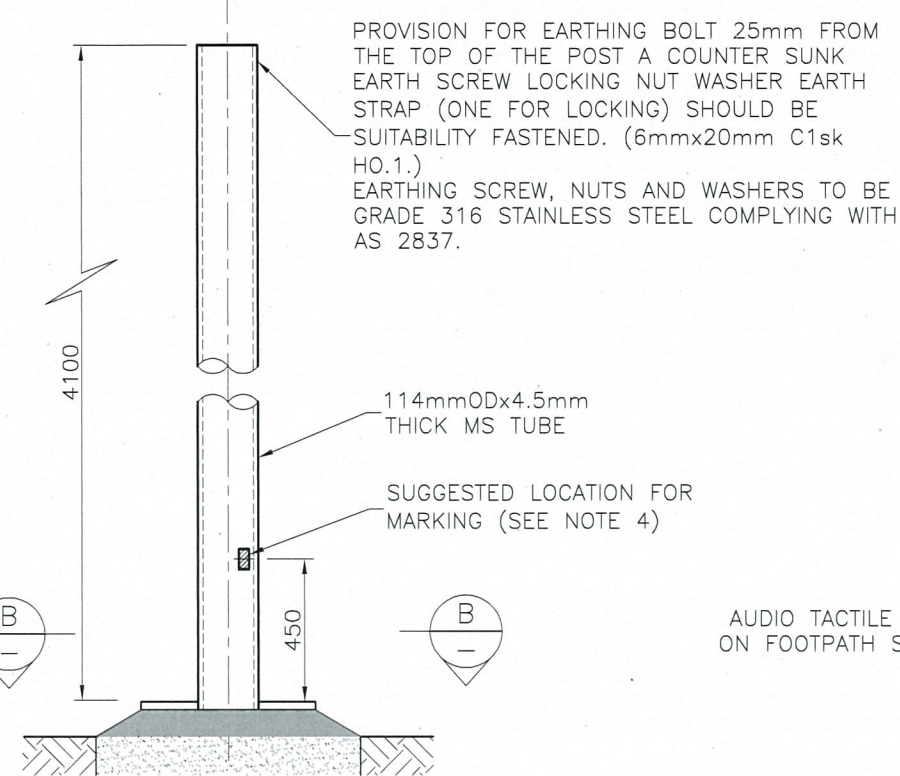


**PUSH BUTTON  
PEDESTRIAN/CYCLIST POST**

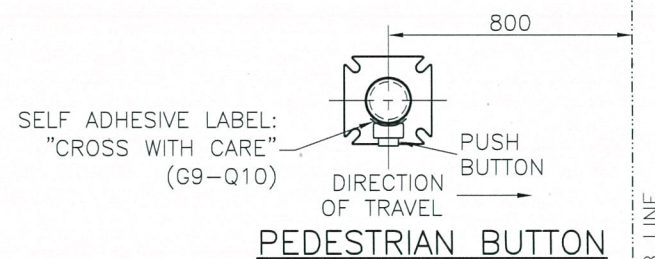


**BASE PLATE DETAIL  
SECTION B-B**

4 OF 28mm WIDE SLOTS ON 350mm PITCH CIRCLE  
DIAMETER 16mm THICK MILD STEEL.



**TRAFFIC SIGNAL  
POST (4.1m)**



**PEDESTRIAN BUTTON**



**CYCLIST BUTTON**

**PUSH BUTTON  
ORIENTATION**

AUDIO TACTILE DRIVER  
ON FOOTPATH SIDE OF  
POST

**SIGNS**



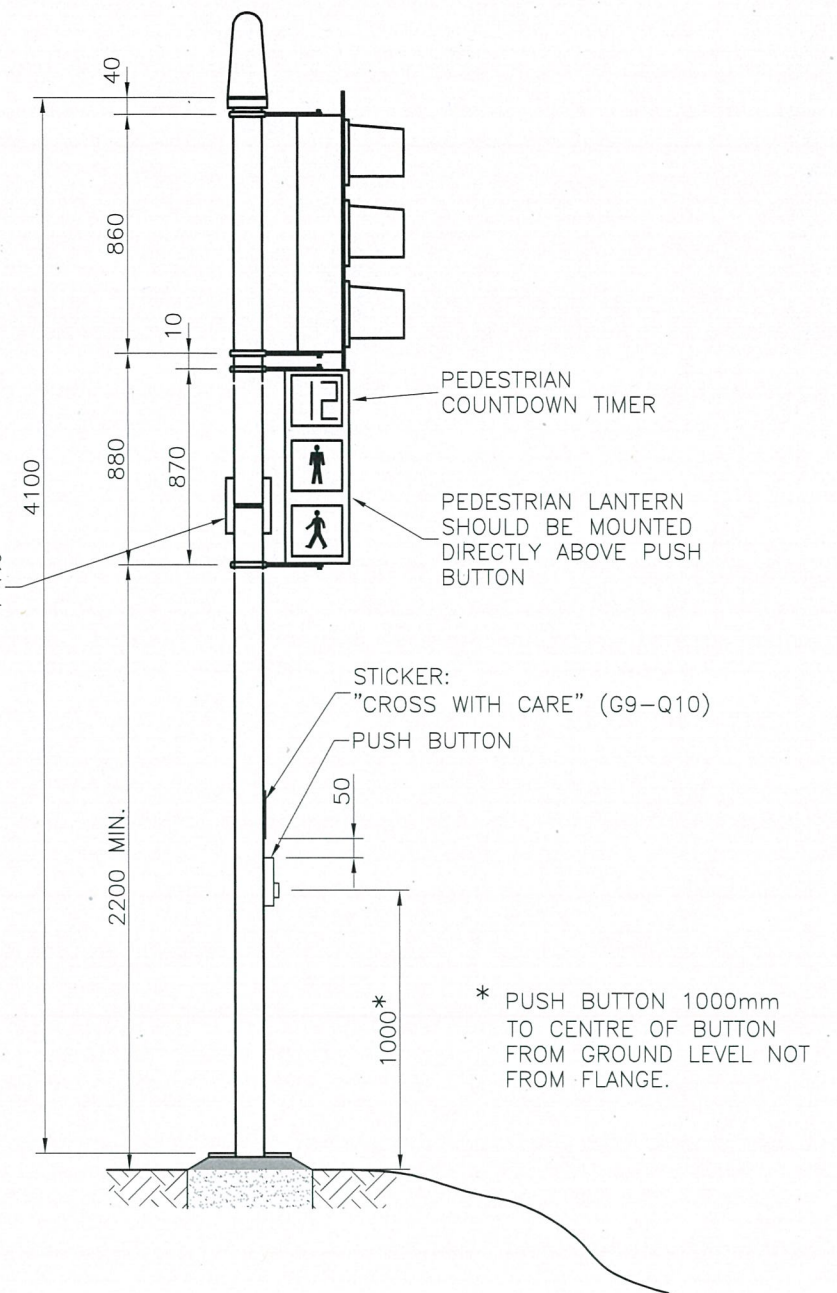
SELF ADHESIVE  
LABEL G9-Q10



SELF ADHESIVE  
LABEL TC1456

**NOTES:**

1. REMOVE ALL BURRS AND SHARP EDGES FROM HOLES THE SURFACE OF THE TUBULAR SECTION SHALL BE SMOOTH AND FREE FROM DAGS OR SHARP PROJECTIONS.
2. POST TO BE MANUFACTURED IN ACCORDANCE WITH AS2339 AND HOT DIPPED GALVANISED ITO AS/NZS4680.
3. PUSH BUTTON ASSEMBLIES TO AS2353.
4. MANUFACTURERS IDENTIFICATION AND DATE OF MANUFACTURE SHALL BE LEGIBLY AND DURABLY MARKED.
5. REFER TO BSD-4121 AND BSD-4151 FOR FOOTING DETAILS.
6. REFER TO QUEENSLAND MANUAL OF UNIFORM TRAFFIC CONTROL DEVICES (MUTCD) AND QUEENSLAND DEPARTMENT OF TRANSPORT AND MAIN ROADS DRAWING TC1456 FOR LABEL DETAILS.
7. DIMENSIONS IN MILLIMETRES (U.N.O.).

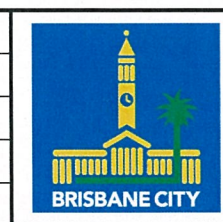


\* PUSH BUTTON 1000mm  
TO CENTRE OF BUTTON  
FROM GROUND LEVEL NOT  
FROM FLANGE.

ISSUE	AMENDMENT	DRAWN DATE	CHK'D DATE	APPR'D DATE
C	POST OFFSETS FROM KERB LINE CORRECTED	BW 13/09/16	KW 13/09/16	13/09/16
B	FOOTING CHANGED TO RAISE POST BASEPLATE ABOVE GROUND LEVEL	BW 5.09.16	AMG 5.09.16	AMG 5.09.16
A	Drawing Converted from UMS Series April 2014	APR '14	APR '14	APR '14

DRAWING AUTHORISED FOR PUBLICATION B. BALL SIGNATURE ON ORIGINAL DATED 29/6/01
MANAGER ASSET SUPPORT - R.P.E.Q. 3 8 5 2
DESIGN APPROVED K. MEMORY SIGNATURE ON ORIGINAL DATED 27/6/01
SENIOR PROGRAM OFFICER NETWORK OPERATIONS - R.P.E.Q. 4 7 6 1

DESIGN	Std Dwg WG	DATE	April '01
DRAWN	CPO - P&D	DATE	April '01
CHECKED	R. WILSON	DATE	May '01
DRAWING FILENAME	BSD-4122.dwg		
ASSOCIATED PLANS	SUPERSEDES UMS-600-051		



BRISBANE CITY COUNCIL STANDARD DRAWING	
SCALE	NOT TO SCALE
DWG No.	BSD-4122
ORIGINAL SIZE	A3
REVISION	C

POST DETAILS