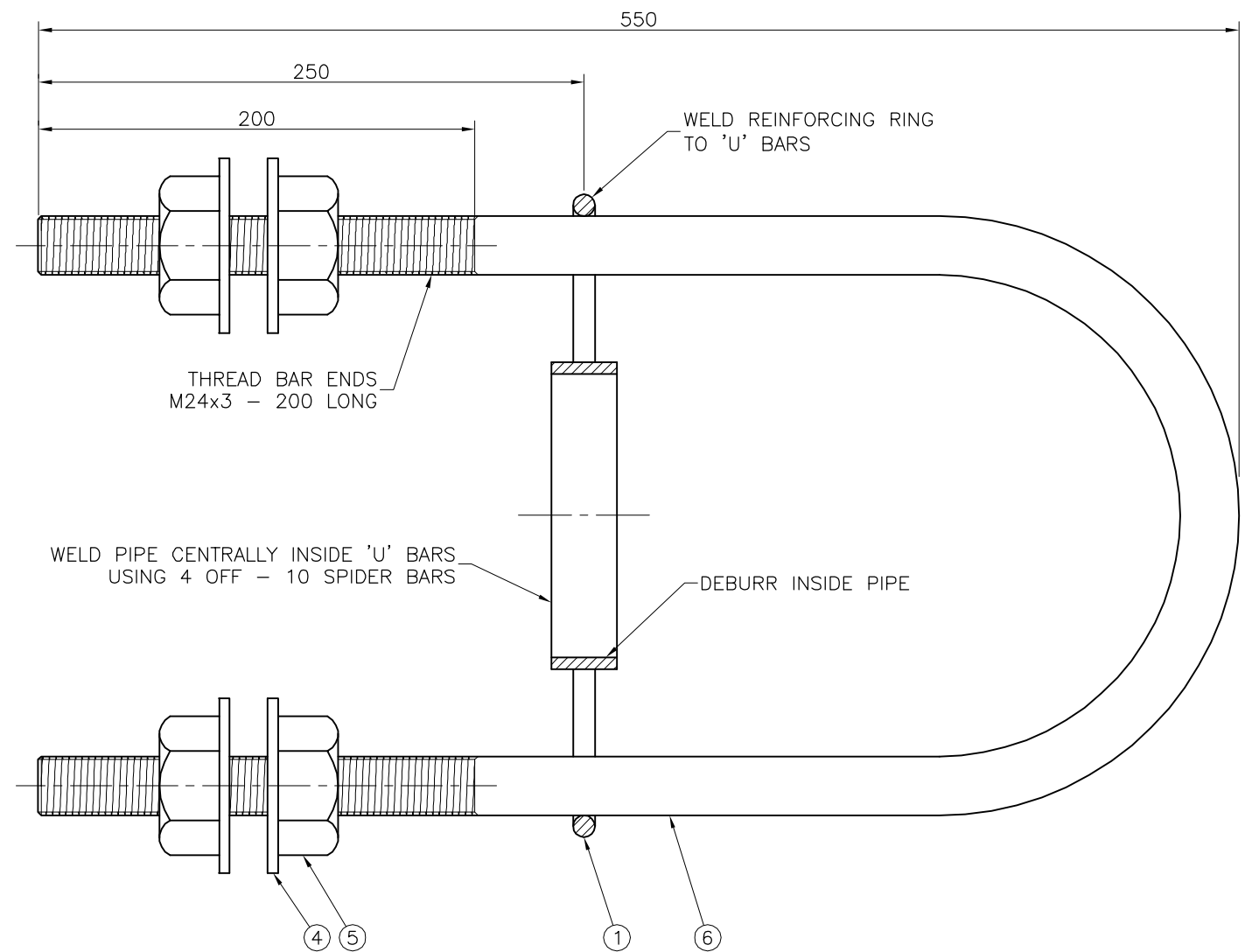


END VIEW



SECTIONAL ELEVATION

MATERIALS LIST

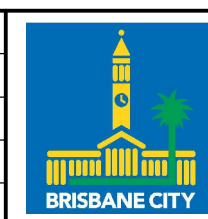
ITEM No.	No. OFF	ITEM DESCRIPTION	MATERIAL DESCRIPTION	LENGTH	GRADE
6	2	'U' SHAPED ANCHOR BAR	N28 BAR WITH M24 THREAD	1220mm	-
5	8	LEVELLING NUTS—REFER TO NOTES 1 & 3	M24 HEX GALV. NUT		8.8/S
4	8	GALVANISED WASHERS	Ø25mm x 5mm GALV. WASHERS		-
3	4	SPIDER BAR TIE	Ø10mm ROUND STEEL BAR	102mm	M.S.
2	1	SPIDER CENTRE RING	130NBx5.4mm WALL BLACK PIPE	30mm	Gr 250
1	1	REINFORCING RING	Ø10mm ROUND STEEL BAR	1110mm	M.S.

NOTES:

- ALL NUTS TO CONFORM TO AS1112 AND AS1252 & HOT DIPPED GALVANISED TO AS1214.
- ALL WASHERS TO BE HOT DIPPED GALVANISED TO AS1214.
- SCREW ON EACH BAR TWO NUTS WITH TWO FLAT WASHERS BETWEEN THEM AFTER GALVANISING.
- ANCHOR CAGE ASSEMBLY TO BE CLEANED AND THE WELDING SLAG REMOVE PRIOR TO BEING HOT DIP GALVANISED TO AS/NZS4680 AND AS1214.
- THREADS SHOULD BE CLEAN AFTER GALVANISING AND A TEMPLATE PLACED OVER THREADED ENDS TO ENSURE THE ACCURACY OF THE P.C.D. OF BARS.
- THIS 4 BAR GALVANISED CAGE WEIGHS 14kg.
- TOLERANCES: DIMENSIONAL ±5.0 U.N.O., HOLE CENTRES ±1.0 U.N.O.
- DIMENSIONS IN MILLIMETRES (U.N.O.).

B	BOTTOM STRAP TIE REMOVED	BW 18.11.15	CJC 18.11.15	AMG 18.11.15
A	ORIGINAL ISSUE	Oct '13	Oct '13	Oct '13
ISSUE	AMENDMENT	DRAWN DATE	CHK'D DATE	APPR'D DATE

DRAWING AUTHORISED FOR PUBLICATION B. BALL SIGNATURE ON ORIGINAL DATED 29/6/01				DESIGN	Std Dwgs WG	DATE	Apr'01
MANAGER ASSET SUPPORT - R.P.E.Q: 3 8 5 2				DRAWN	CPO - P&D	DATE	Apr'01
DESIGN APPROVED K. MEMORY SIGNATURE ON ORIGINAL DATED 27/6/01				CHECKED	R. WILSON	DATE	May'01
SENIOR PROGRAM OFFICER NETWORK OPERATIONS - R.P.E.Q: 4 7 6 1				DRAWING FILENAME	BSD-4152.dwg		
				ASSOCIATED PLANS	SUPERSEDES UMS-600-061		



BRISBANE CITY COUNCIL STANDARD DRAWING	
RAGBOLT ASSEMBLIES PEDESTAL	
SCALE NOT TO SCALE	DWG No. BSD-4152
ORIGINAL SIZE A3	REVISION B