

# STANDARDS

DESIGNED IN ACCORDANCE WITH, AND FABRICATION TO MEET THE FOLLOWING STANDARDS:

1. COMPLIANT WITH AS1428.2:1992, CLAUSE 27.2 SEATING IN PEDESTRIAN AREAS.
2. AS1627.4 METAL FINISHING – PREPARATION AND PRE-TREATMENT OF SURFACES – ABRASIVE BLAST CLEANING OF STEEL.
3. AS2312:2002/AMDT 1:2004, GUIDE TO PROTECTION OF IRON AND STEEL AGAINST EXTERIOR ATMOSPHERIC CORROSION, 1994.
4. GUIDE TO ENGINEERING PRACTICE, 'PEDESTRIANS', PART 13, AUSTRROADS.
5. AS2796.3:1999, TIMBER FOR FURNITURE COMPONENTS.
6. AS1604.1-2005, SPECIFICATION FOR PRESERVATIVE TREATMENT, SAWN AND ROUND TIMBER.
7. AS4506 –2005, METAL FINISHING– THERMOSET POWDER COATINGS.
8. AS4680:2006, HOT DIP GALVANISING. POWDERCOATING TO BE IN ACCORDANCE TO AS4506-2005 EXTERNAL EXPOSURE STANDARD WITH PRE-TREATMENT SAND BLAST, ZINC PHOSPHATE, ETC.
9. WOOD TREATMENT – IN ACCORDANCE WITH AS1604.1 HAZARD CLASSIFICATION H3 (EXTERIOR ABOVE GROUND) AND AS2796.3 (TIMBER FOR FURNITURE COMPONENTS.)

# NOTES

1. WELDING TO BE ACCORDANCE TO AS1554.1 CAT GP WELDING, ALL SHARP EDGES & BURRS REMOVED.
2. PART SHOULD BE SUPPLIED CLEAN AND FREE FROM MARKS, BURRS, SCUFFS, DISTORTION AND WARPAGE.
3. ENSURE ANTI-SEIZE IS ON ALL NUTS AND BOLTS PRIOR TO ASSEMBLY.
4. DRAWING TO AS1100 DRAWING STANDARDS.
5. 316 S.S AND 316 S.S FASTENERS TO BE USED THROUGHOUT FOR COASTAL INSTALLATIONS OR ANY ENVIRONMENT WITH HIGH CORROSION.
6. ALL TOLERANCES  $\pm 1.5\text{mm}$  UNLESS OTHERWISE SPECIFIED.
7. SEAT FOOT IS THE SAME PART AS BENCH FOOT (REFER TO DRAWING BSD-7203)

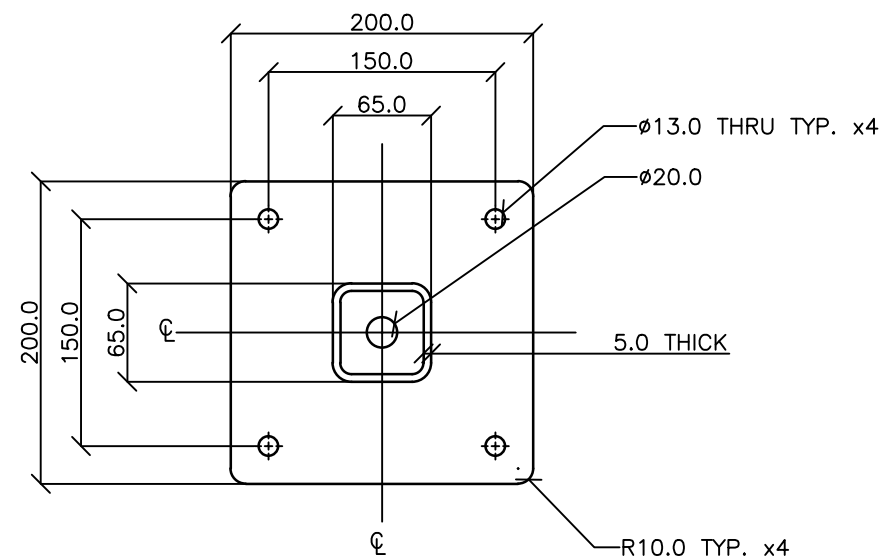
# MATERIAL

1. MATERIAL: MILD STEEL
2. COLOUR: DULUX 'METROPOLIS STORM PEARL' OR APPROVED EQUIVALENT
3. FINISH: GALVANISED AND POWDER COATED

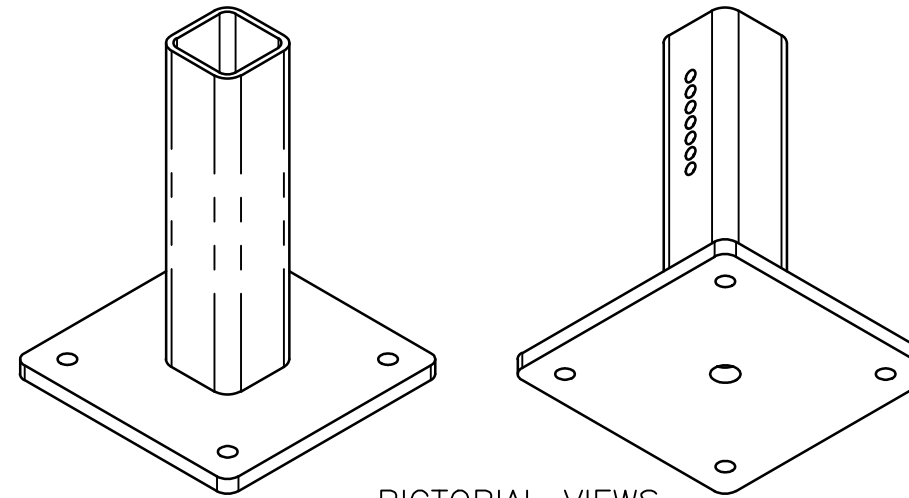
**STRUCTURAL DESIGN REVIEWED AND CERTIFIED FOR ISSUE**

NAME: B.C. PLANT RPEQ: 8807

SIGNATURE: ON ORIGINAL DATE: 28/6/12

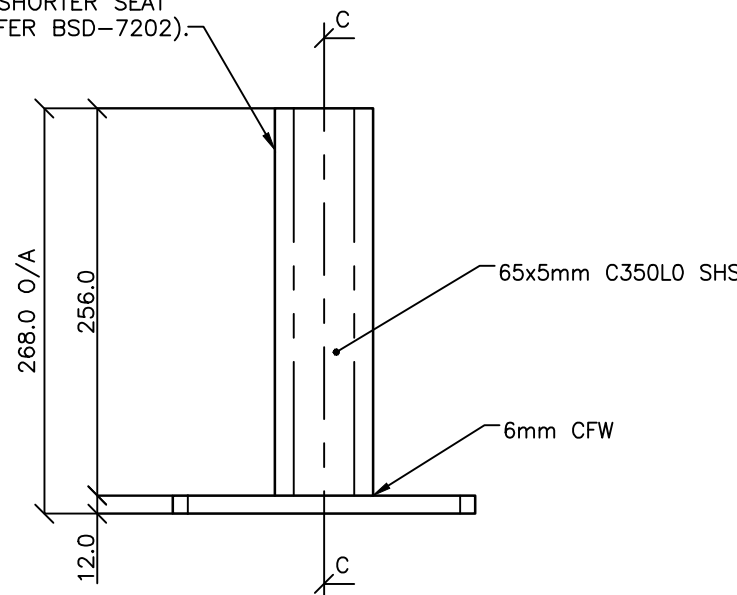


TOP VIEW

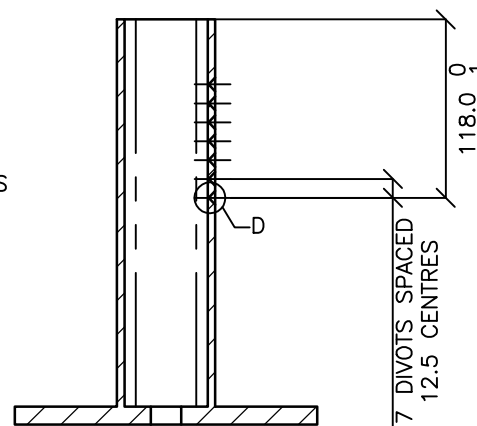


PICTORIAL VIEWS

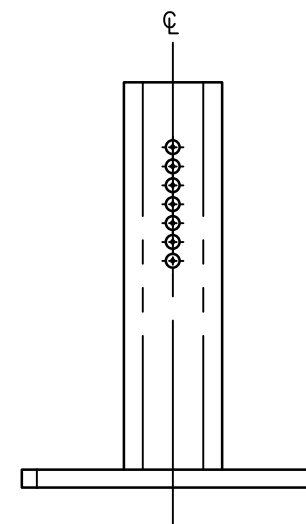
LEG LENGTH SUITS 450mm HIGH SEAT. LEG TO BE DOCKED TO LENGTH FOR SHORTER SEAT INSTALLATION (REFER BSD-7202).



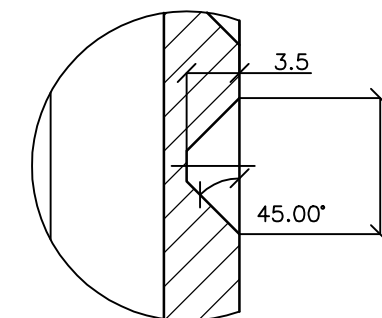
FRONT VIEW



SECTION C-C



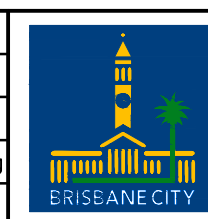
REAR VIEW



DETAIL D  
TYPICAL GRUB SCREW DIVOT DETAIL  
SCALE 2 : 1

ISSUE	AMENDMENT	DRAWN DATE	CHK'D DATE	APPR'D DATE
C	Colour Finish Requirement Updated (Material Notes)	MAY '17	MAY '17	MAY '17
B	Drawing Title Amended	FEB '16	JUL '16	JUL '16
A	Drawing Converted from UMS Series April 2014	APR '14	APR '14	APR '14

DRAWING AUTHORISED FOR PUBLICATION INGA CONDRIE AUTHORISED 15/04/2014			
DESIGN	FORMZOO DESIGN	DATE	JUN '12
DRAWN	AB	DATE	JUN '12
CHECKED	VM	DATE	APR '13
DRAWING FILENAME	BSD-7202 (B) Public transport seat - Foot - Sheet 6 of 10.dwg		
ASSOCIATED PLANS	SUPERSEDES UMS-569-6		



<b>BRISBANE CITY COUNCIL STANDARD DRAWING</b>	
<b>PUBLIC TRANSPORT SEAT FOOT</b>	
<b>SHEET 6 OF 10</b>	
SCALE	NOT TO SCALE
DWG No.	<b>BSD-7202</b>
ORIGINAL SIZE	A3
REVISION	c