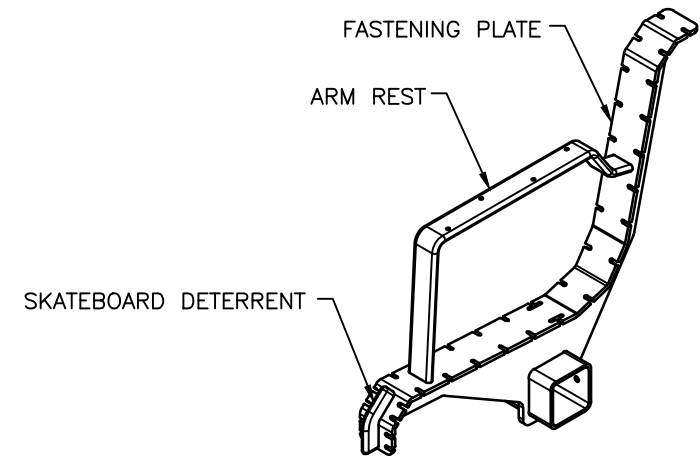
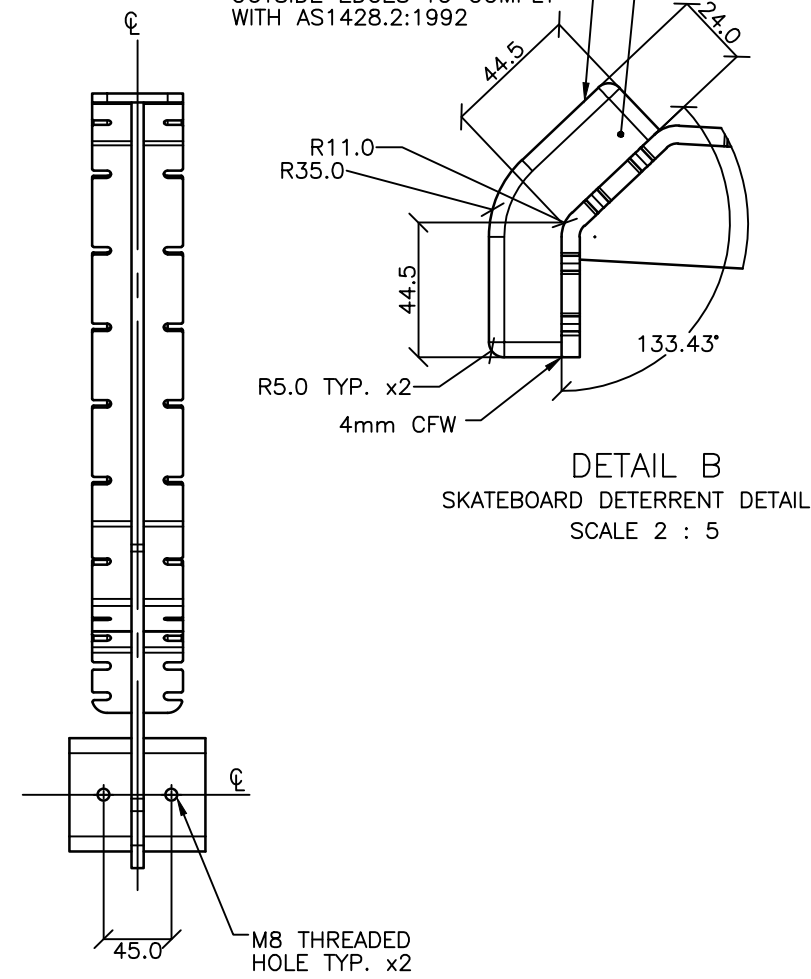


FASTENING PLATE FLAT PATTERN
(1:5) - NOT FULL SCALE
FABRICATOR TO REVIEW SCALE BEFORE USING FLAT PATTERN

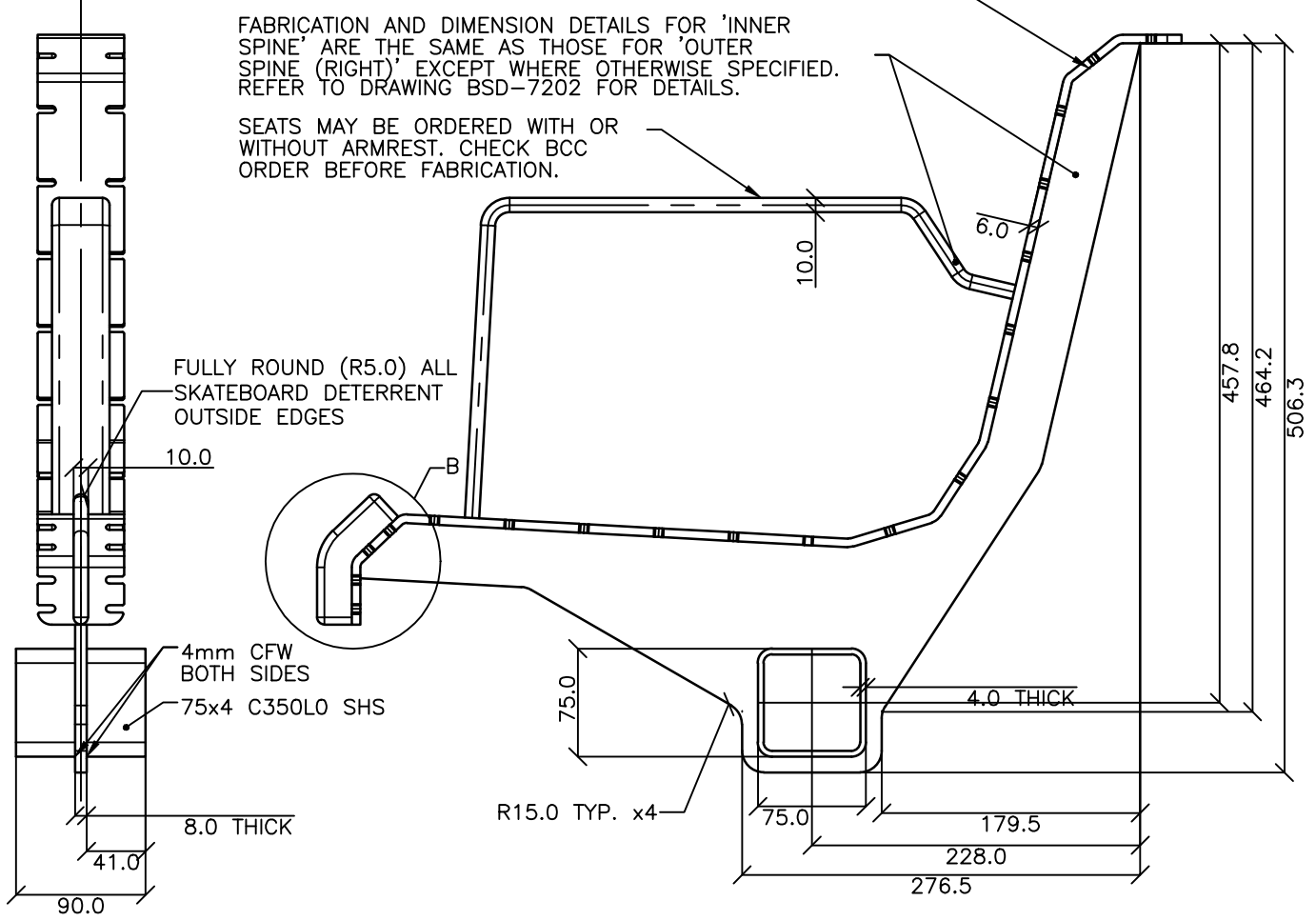


PICTORIAL VIEW

FULLY ROUND (R5.0)
ALL SKATEBOARD DETERRENT
OUTSIDE EDGES TO COMPLY
WITH AS1428.2:1992



DETAIL B
SKATEBOARD DETERRENT DETAIL
SCALE 2 : 5



FRONT VIEW

SIDE VIEW

BACK VIEW

STANDARDS

DESIGNED IN ACCORDANCE WITH, AND FABRICATION TO MEET THE FOLLOWING STANDARDS:

1. COMPLIANT WITH AS1428.2:1992, CLAUSE 27.2 SEATING IN PEDESTRIAN AREAS.
2. AS1627.4 METAL FINISHING - PREPARATION AND PRE-TREATMENT OF SURFACES - ABRASIVE BLAST CLEANING OF STEEL.
3. AS2312:2002/AMDT 1:2004, GUIDE TO PROTECTION OF IRON AND STEEL AGAINST EXTERIOR ATMOSPHERIC CORROSION, 1994.
4. GUIDE TO ENGINEERING PRACTICE, 'PEDESTRIANS', PART 13, AUSTRROADS.
5. AS2796.3:1999, TIMBER FOR FURNITURE COMPONENTS.
6. AS1604.1-2005, SPECIFICATION FOR PRESERVATIVE TREATMENT, SAWN AND ROUND TIMBER.
7. AS4506 -2005, METAL FINISHING- THERMOSET POWDER COATINGS.
8. AS4680:2006, HOT DIP GALVANISING.
9. POWDERCOATING TO BE IN ACCORDANCE TO AS4506-2005 EXTERNAL EXPOSURE STANDARD WITH PRE-TREATMENT SAND BLAST, ZINC PHOSPHATE, ETC.
10. WOOD TREATMENT - IN ACCORDANCE WITH AS1604.1 HAZARD CLASSIFICATION H3 (EXTERIOR ABOVE GROUND) AND AS2796.3 (TIMBER FOR FURNITURE COMPONENTS.)

NOTES

1. WELDING TO BE ACCORDANCE TO AS1554.1 CAT GP WELDING, ALL SHARP EDGES & BURRS REMOVED.
2. PART SHOULD BE SUPPLIED CLEAN AND FREE FROM MARKS, BURRS, SCUFFS, DISTORTION AND WARPAGE.
3. ENSURE ANTI-SEIZE IS ON ALL NUTS AND BOLTS PRIOR TO ASSEMBLY.
4. DRAWING TO AS1100 DRAWING STANDARDS.
5. 316 S.S AND 316 S.S FASTENERS TO BE USED THROUGHOUT FOR COASTAL INSTALLATIONS OR ANY ENVIRONMENT WITH HIGH CORROSION.
6. ALL TOLERANCES $\pm 1.5\text{mm}$ UNLESS OTHERWISE SPECIFIED.
7. FABRICATION AND DIMENSION DETAILS FOR 'SEAT INNER SPINE' ARE THE SAME AS THOSE FOR 'SEAT OUTER SPINE (RIGHT)' EXCEPT WHERE OTHERWISE SPECIFIED. REFER TO DRAWING BSD-7202 FOR DETAILS.

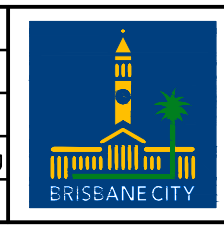
MATERIAL

1. MATERIAL: MILD STEEL
2. COLOUR: DULUX 'METROPOLIS STORM PEARL' OR APPROVED EQUIVALENT
3. FINISH: GALVANISED AND POWDER COATED

STRUCTURAL DESIGN REVIEWED AND CERTIFIED FOR ISSUE
NAME: B.C. PLANT _____ RPEQ: 8807
SIGNATURE: ON ORIGINAL _____ DATE: 28/6/12

ISSUE	AMENDMENT	DRAWN DATE	CHK'D DATE	APPR'D DATE
C	Colour Finish Requirement Updated (Material Notes)	MAY '17	MAY '17	MAY '17
B	Drawing Title Amended	FEB '16	JUL '16	JUL '16
A	Drawing Converted from UMS Series April 2014	APR '14	APR '14	APR '14

DRAWING AUTHORISED FOR PUBLICATION INGA CONDRIK AUTHORISED 15/04/2014				DESIGN	FORM200 DESIGN	DATE	JUN '12
ASSET ENGINEERING MANAGER STRATEGIC ASSET MANAGEMENT				DRAWN	AB	DATE	JUN '12
DESIGN APPROVED				CHECKED	VM	DATE	APR '13
VICKI MARTIN SIGNATURE ON ORIGINAL				DRAWING FILENAME	BSD-7202 (B) Public transport seat - Inner spine - Sheet 4 of 10.dwg		
PRINCIPAL PLANNING OFFICER URBAN DESIGN				ASSOCIATED PLANS	SUPERSEDES UMS-569-4		



BRISBANE CITY COUNCIL STANDARD DRAWING	
PUBLIC TRANSPORT SEAT INNER SPINE SHEET 4 OF 10	
SCALE NOT TO SCALE	DWG No. BSD-7202
ORIGINAL SIZE A3	REVISION C