

STANDARDS

DESIGNED IN ACCORDANCE WITH, AND FABRICATION TO MEET THE FOLLOWING STANDARDS:

1. COMPLIANT WITH AS1428.2:1992, CLAUSE 27.2 SEATING IN PEDESTRIAN AREAS.
2. AS1627.4 METAL FINISHING – PREPARATION AND PRE-TREATMENT OF SURFACES – ABRASIVE BLAST CLEANING OF STEEL.
3. AS2312:2002/AMDT 1:2004, GUIDE TO PROTECTION OF IRON AND STEEL AGAINST EXTERIOR ATMOSPHERIC CORROSION, 1994.
4. GUIDE TO ENGINEERING PRACTICE, 'PEDESTRIANS', PART 13, AUSTRROADS.
5. AS2796.3:1999, TIMBER FOR FURNITURE COMPONENTS.
6. AS1604.1-2005, SPECIFICATION FOR PRESERVATIVE TREATMENT, SAWN AND ROUND TIMBER.
7. AS4506 –2005, METAL FINISHING– THERMOSET POWDER COATINGS.
8. AS4680:2006, HOT DIP GALVANISING. POWDERCOATING TO BE IN ACCORDANCE TO AS4506-2005 EXTERNAL EXPOSURE STANDARD WITH PRE-TREATMENT SAND BLAST, ZINC PHOSPHATE, ETC.
9. WOOD TREATMENT – IN ACCORDANCE WITH AS1604.1 HAZARD CLASSIFICATION H3 (EXTERIOR ABOVE GROUND) AND AS2796.3 (TIMBER FOR FURNITURE COMPONENTS.)

NOTES

1. WELDING TO BE ACCORDANCE TO AS1554.1 CAT GP WELDING, ALL SHARP EDGES & BURRS REMOVED.
2. PART SHOULD BE SUPPLIED CLEAN AND FREE FROM MARKS, BURRS, SCUFFS, DISTORTION AND WARPAGE.
3. ENSURE ANTI-SEIZE IS ON ALL NUTS AND BOLTS PRIOR TO ASSEMBLY.
4. DRAWING TO AS1100 DRAWING STANDARDS.
5. 316 S.S AND 316 S.S FASTENERS TO BE USED THROUGHOUT FOR COASTAL INSTALLATIONS OR ANY ENVIRONMENT WITH HIGH CORROSION.
6. ALL TOLERANCES $\pm 1.5\text{mm}$ UNLESS OTHERWISE SPECIFIED.
7. THIS IS A LEFT HAND (MIRRORED) VERSION OF PART 'SEAT OUTER SPINE (RIGHT)' – REFER TO DRAWING BSD-7202 FOR FABRICATION AND DIMENSION DETAILS.

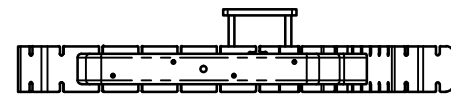
MATERIAL

1. MATERIAL: MILD STEEL
2. COLOUR: DULUX 'METROPOLIS STORM PEARL' OR APPROVED EQUIVALENT
3. FINISH: GALVANISED AND POWDER COATED

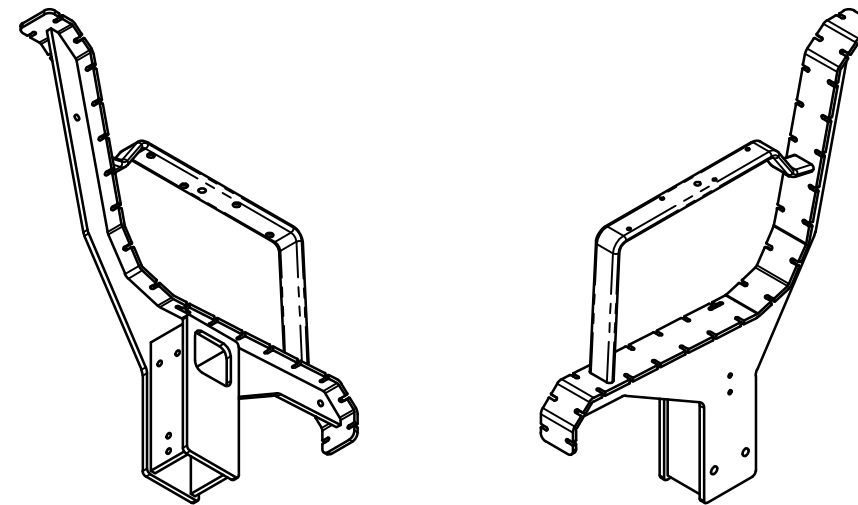
STRUCTURAL DESIGN REVIEWED AND CERTIFIED FOR ISSUE

NAME: B.C. PLANT _____ RPEQ: 8807

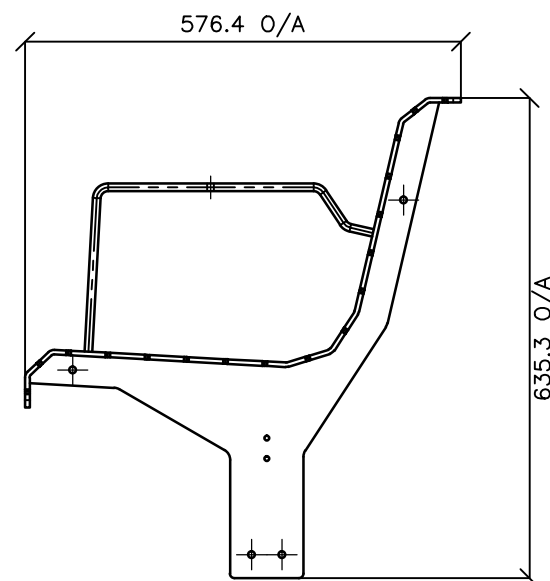
SIGNATURE: ON ORIGINAL _____ DATE: 28/6/12



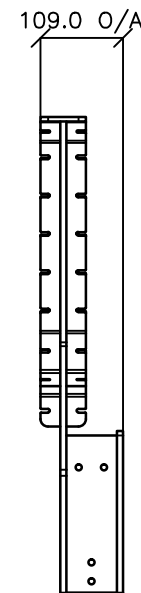
TOP VIEW



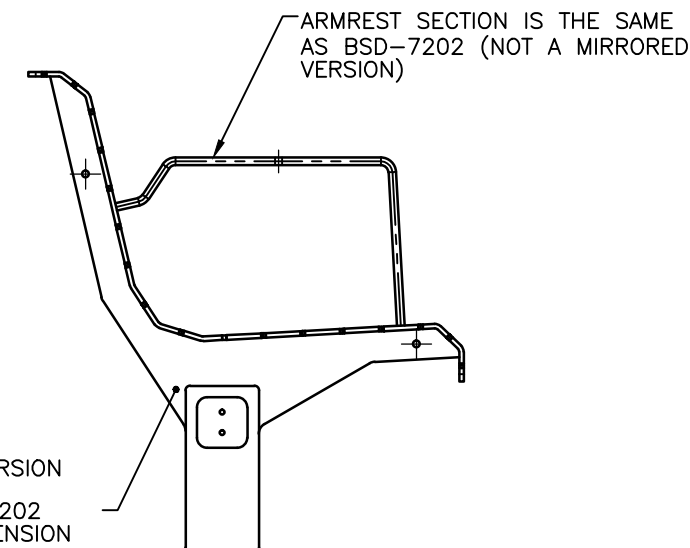
PICTORIAL VIEWS



RIGHT SIDE VIEW

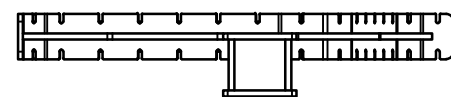


BACK VIEW




LEFT SIDE VIEW

LEFT HAND (MIRRORED) VERSION OF 'OUTER SPINE (RIGHT)', REFER TO DRAWING BSD-7202 FOR FABRICATION AND DIMENSION DETAILS.



BOTTOM VIEW

ISSUE	AMENDMENT	DRAWN DATE	CHK'D DATE	APPR'D DATE	DRAWING AUTHORITY	DESIGN	FORMZOO DESIGN	DATE	JUN '12	BRISBANE CITY COUNCIL STANDARD DRAWING	SCALE	NOT TO SCALE
D	Colour Finish requirements Updated (Material Notes)	MAY '17	MAY '17	MAY '17	DRAWING AUTHORIZED FOR PUBLICATION INGA CONDRIK AUTHORIZED 15/04/2014	DRAWN	AB	DATE	JUN '12	 BRISBANE CITY COUNCIL STANDARD DRAWING PUBLIC TRANSPORT SEAT OUTER SPINE (LEFT) SHEET 5 OF 10	DWG No.	BSD-7202
C	Drawing Title Amended	FEB '16	JUL '16	JUL '16	ASSET ENGINEERING MANAGER STRATEGIC ASSET MANAGEMENT	CHECKED	VM	DATE	APR '13		ORIGINAL SIZE	A3
B	Advertising panel amendments	SEPT '14	SEPT '14	SEPT '14	DESIGN APPROVED	DRAWING FILENAME	BSD-7202 (C) Public transport seat - Outer spine (left) - Sheet 5 of 10.dwg				REVISION	D
A	Drawing Converted from UMS Series April 2014	APR '14	APR '14	APR '14	VICKI MARTIN SIGNATURE ON ORIGINAL	ASSOCIATED PLANS	SUPERSEDES UMS-569-5					
					PRINCIPAL PLANNING OFFICER URBAN DESIGN							