

STANDARDS

DESIGNED IN ACCORDANCE WITH, AND FABRICATION TO MEET THE FOLLOWING STANDARDS:

- AS1627.4 METAL FINISHING – PREPARATION AND PRE-TREATMENT OF SURFACES – ABRASIVE BLAST CLEANING OF STEEL.
- AS2312:2002/AMDT 1:2004, GUIDE TO PROTECTION OF IRON AND STEEL AGAINST EXTERIOR ATMOSPHERIC CORROSION, 1994.
- GUIDE TO ENGINEERING PRACTICE, 'PEDESTRIANS', PART 13, AUSTRROADS.
- AS2796.3:1999, TIMBER FOR FURNITURE COMPONENTS.
- AS1604.1–2005, SPECIFICATION FOR PRESERVATIVE TREATMENT, SAWN AND ROUND TIMBER.
- AS4506 –2005, METAL FINISHING– THERMOSET POWDER COATINGS.
- AS4680:2006, HOT DIP GALVANISING.
- POWDERCOATING TO BE IN ACCORDANCE TO AS4506–2005 EXTERNAL EXPOSURE STANDARD WITH PRE-TREATMENT SAND BLAST, ZINC PHOSPHATE, ETC.
- WOOD TREATMENT – IN ACCORDANCE WITH AS1604.1 HAZARD CLASSIFICATION H3 (EXTERIOR ABOVE GROUND) AND AS2796.3 (TIMBER FOR FURNITURE COMPONENTS.)

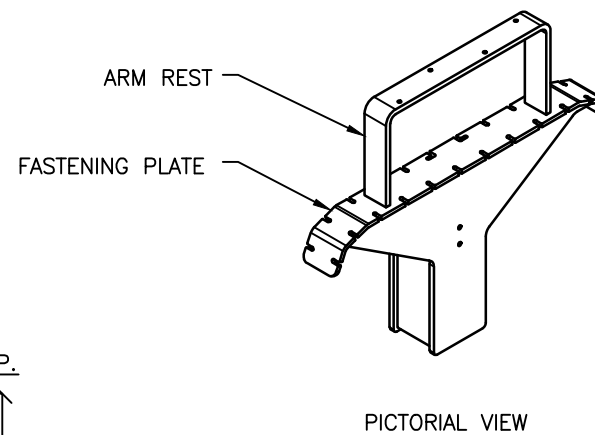
NOTES

- WELDING TO BE ACCORDANCE TO AS1554.1 CAT GP WELDING, ALL SHARP EDGES & BURRS REMOVED.
- PART SHOULD BE SUPPLIED CLEAN AND FREE FROM MARKS, BURRS, SCUFFS, DISTORTION AND WARPAGE.
- ENSURE ANTI-SEIZE IS ON ALL NUTS AND BOLTS PRIOR TO ASSEMBLY.
- DRAWING TO AS1100 DRAWING STANDARDS.
- 316 S.S AND 316 S.S FASTENERS TO BE USED THROUGHOUT FOR COASTAL INSTALLATIONS OR ANY ENVIRONMENT WITH HIGH CORROSION.
- ALL TOLERANCES ± 1.5mm UNLESS OTHERWISE SPECIFIED.

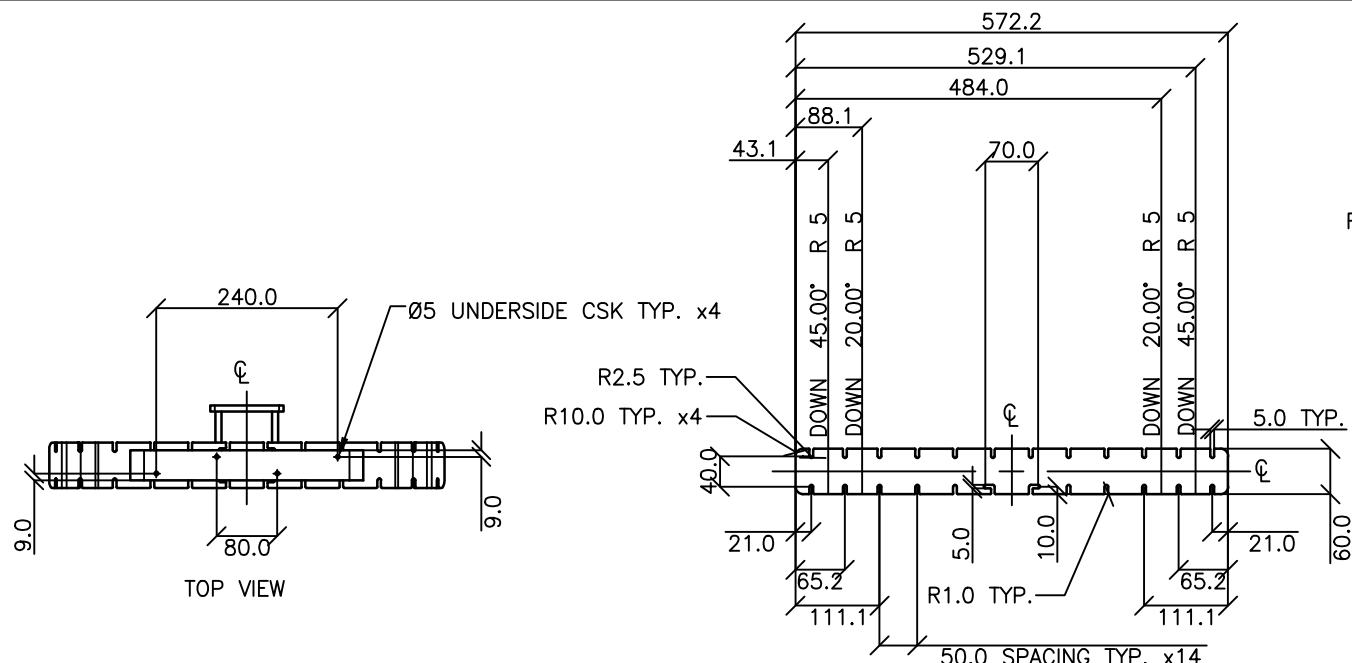
MATERIAL

- MATERIAL: MILD STEEL
- COLOUR: DULUX 'METROPOLIS STORM PEARL' OR APPROVED EQUIVALENT
- FINISH: GALVANISED AND POWDER COATED

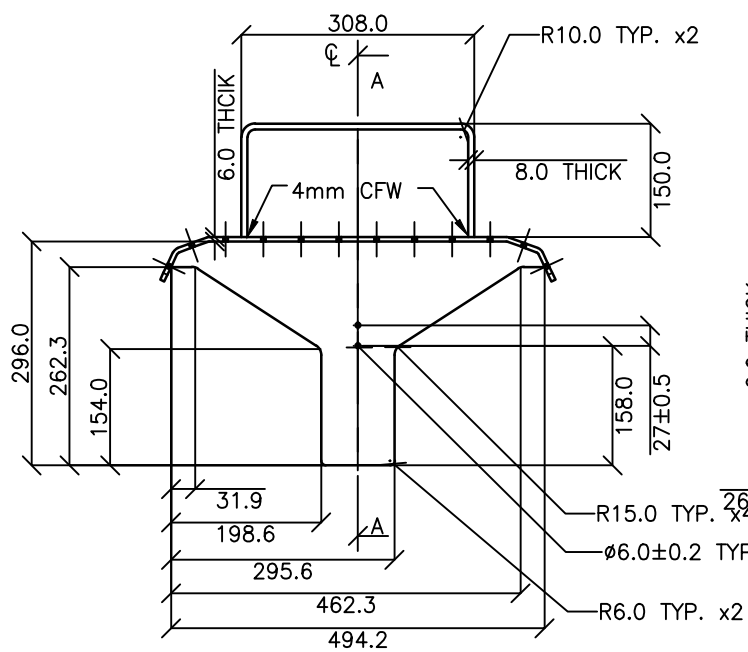
STRUCTURAL DESIGN REVIEWED AND CERTIFIED FOR ISSUE
 NAME: B.C. PLANT _____ RPEQ: 8807
 SIGNATURE: ON ORIGINAL _____ DATE: 28/6/12



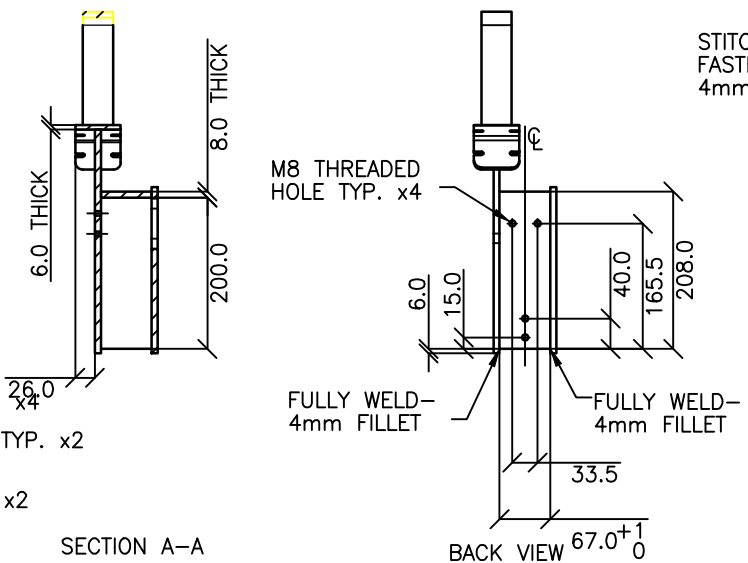
PICTORIAL VIEW



FASTENING PLATE FLAT PATTERN (1:10) – NOT FULL SCALE
 FABRICATOR TO REVIEW SCALE BEFORE USING FLAT PATTERN

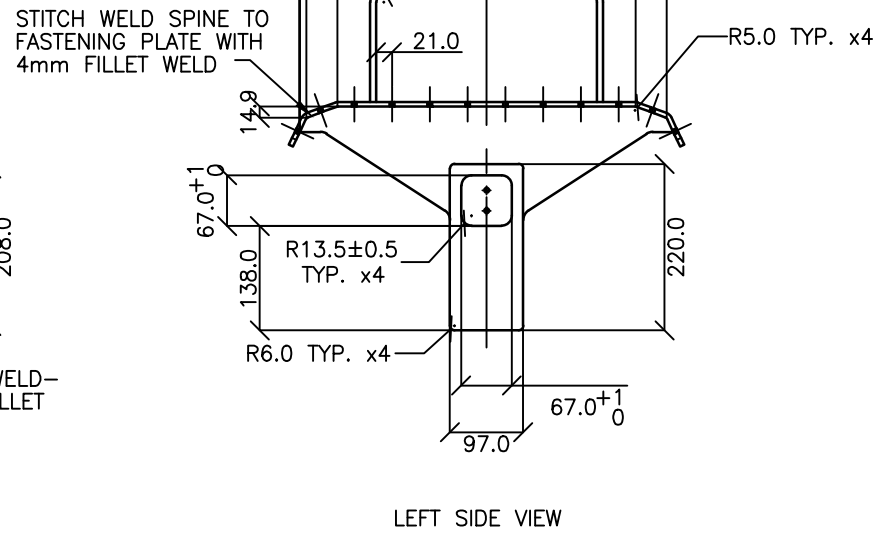


RIGHT SIDE VIEW

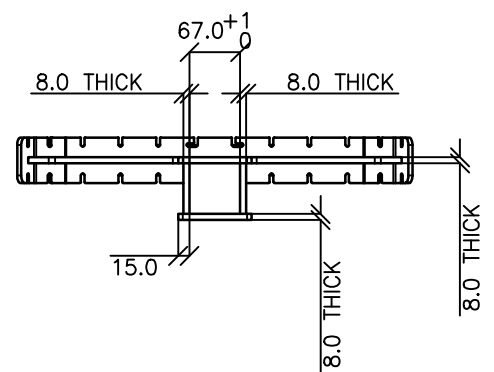


SECTION A-A

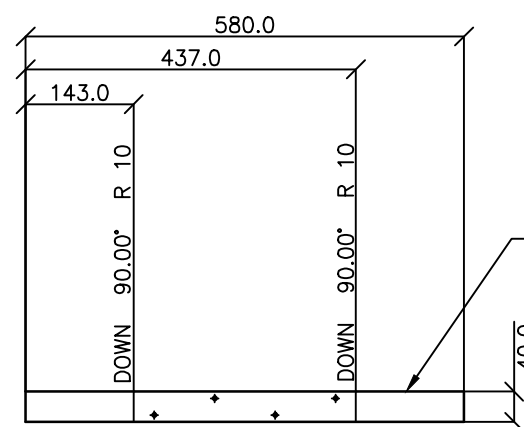
BACK VIEW



LEFT SIDE VIEW



BOTTOM VIEW

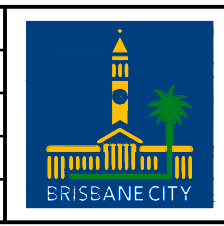


ARM REST FLAT PATTERN (1:10) – NOT FULL SCALE
 FABRICATOR TO REVIEW SCALE BEFORE USING FLAT PATTERN

SEATS MAY BE ORDERED WITH OR WITHOUT ARMRESTS. CHECK BCC ORDER BEFORE FABRICATION.

ISSUE	AMENDMENT	DRAWN DATE	CHK'D DATE	APPR'D DATE
C	Colour Finish Requirements Updated (Material Notes)	MAY '17	MAY '17	MAY '17
B	Drawing Title Amended	FEB '16	JUL '16	JUL '16
A	Drawing Converted from UMS Series April 2014	APR '14	APR '14	APR '14

DRAWING AUTHORISED FOR PUBLICATION INGA CONDRIK AUTHORISED 15/04/2014			
DESIGN	FORMZOO DESIGN	DATE	JUN '12
DRAWN	AB	DATE	JUN '12
CHECKED	VM	DATE	APR '13
DRAWING FILENAME	BSD-7203-3 - Bench - Outer spine (right) - Sheet 3 of 10.dwg		
ASSOCIATED PLANS	SUPERSEDES UMS-564-3		
ASSET ENGINEERING MANAGER STRATEGIC ASSET MANAGEMENT DESIGN APPROVED VICKI MARTIN SIGNATURE ON ORIGINAL PRINCIPAL PLANNING OFFICER URBAN DESIGN			



BRISBANE CITY COUNCIL STANDARD DRAWING

BENCH OUTER SPINE (RIGHT) SHEET 3 OF 10

SCALE: NOT TO SCALE
 DWG No. **BSD-7203**
 ORIGINAL SIZE: A3 REVISION: C