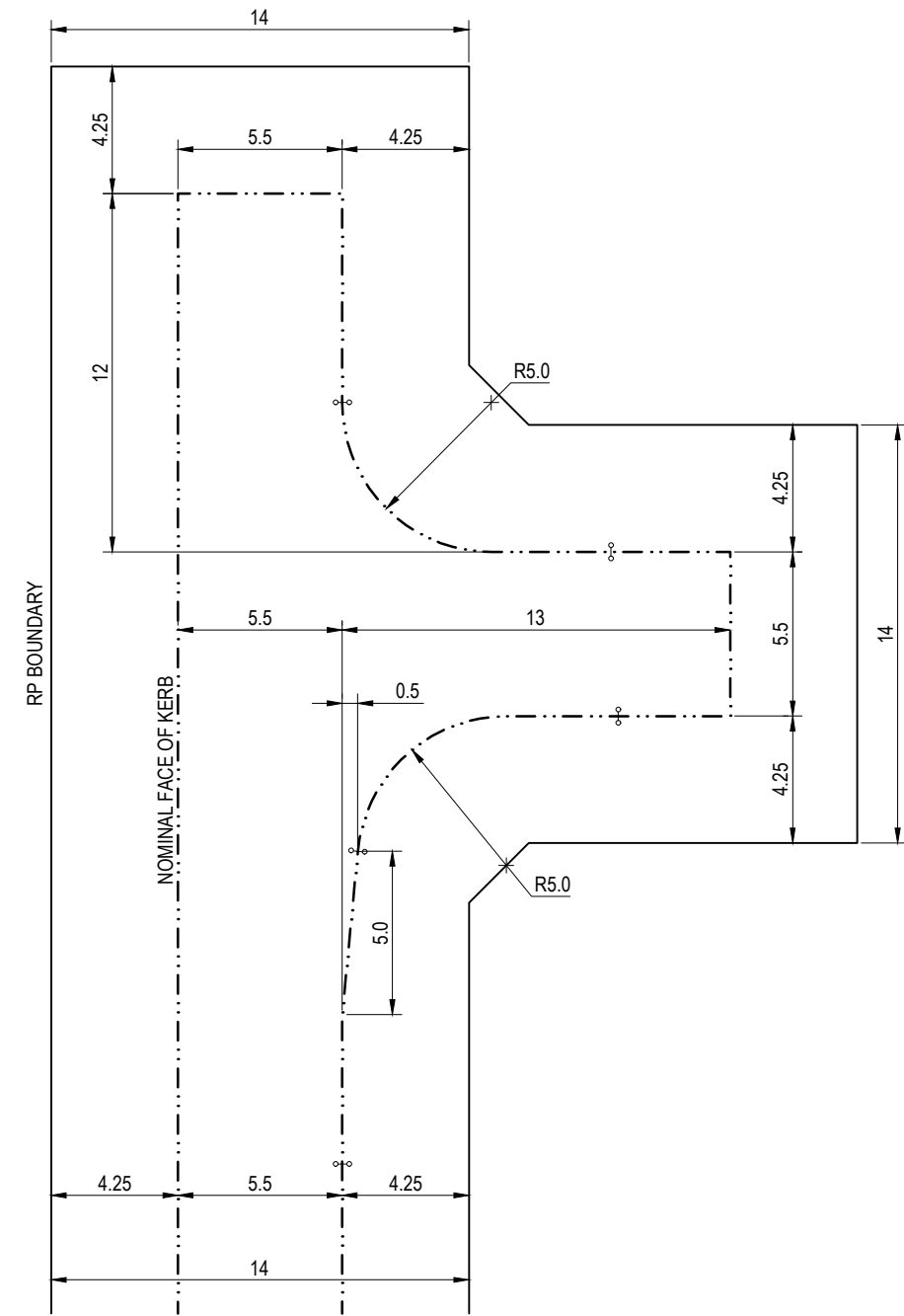


CUL-DE-SAC HEAD



OFFSET T HEAD

NOTES:

1. PARKING LOCATIONS IF REQUIRED MAY BE VARIED TO SUIT ALLOTMENT LAYOUT AND ROAD GEOMETRY (RATE OF 0.5 SPACES/LOT)
2. THESE TURNING AREAS ARE BASED ON THE FOLLOWING:
 - BCC REFUSE TRUCK ABLE TO TURN WITHIN PAVED AREA AND ABLE TO TURN IN ANY DIRECTION TO ENABLE PICK UP EITHER SIDE, IN EACH ARM
 - SUBJECT TO SERVICE REQUIREMENTS THE VERGE MAY BE REDUCED TO A MINIMUM OF 3.0m AT PINCH POINTS.
3. ALL DIMENSIONS IN METRES (U.N.O.).

ISSUE	AMENDMENT	DRAWN DATE	CHK'D DATE	APPR'D DATE
C	Note 2 Amend (BCC Refuse Truck), Dimensions Update., Kerblines Decsip. Amend.	JAN '19	APR '19	APR '19
B	Drawing Title Amended	JAN '16	JUL '16	JUL '16
A	Drawing Converted from UMS Series April 2014	APR '14	APR '14	APR '14

DRAWING AUTHORISED FOR PUBLICATION
 P COTTON SIGNATURE ON ORIGINAL
 DATED 21/03/06
 MANAGER CITY ASSETS, R.P.E.Q: 2 5 4 6

DESIGN APPROVED
 B HANSEN SIGNATURE ON ORIGINAL
 DATED 13/03/06
 PRINCIPAL ENGINEER
 STRATEGIC INFRASTRUCTURE MANAGEMENT

DESIGN	BCC (IMB)	DATE	Jul '04
DRAWN	CA (DJL)	DATE	Jul '04
CHECKED	CA (GMc)	DATE	Nov '05
DRAWING FILENAME	BSD-3001 (C) Typical manoeuvring areas - Residential streets - Sheet 2 of 2.dwg		
ASSOCIATED PLANS	SUPERSEDES UMS-812		



BRISBANE CITY COUNCIL STANDARD DRAWING

TYPICAL MANOEUVRING AREAS - RESIDENTIAL STREETS
 SHEET 2 OF 2

SCALE: NOT TO SCALE
 DWG No: BSD-3001
 ORIGINAL SIZE: A3
 REVISION: C