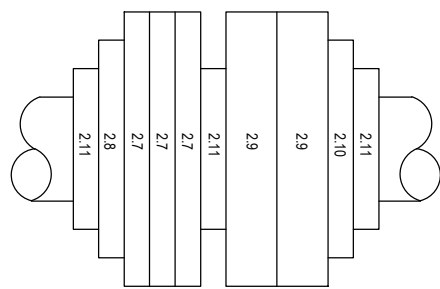


TRAFFIC CONTROLLER TOP HAT - DUAL RACKS			
ITEM	DESCRIPTION	MODEL NUMBER	TOTAL
CCTV EQUIPMENT			
2.0			
2.1	FOBOT 1RU SM FULLY LOADED	TYCO RTCIGS-SCA-24-FS-A24-P24-Z-SM	1
2.2	24VDC, POWER SUPPLY	WEIDMULLER CP SNT 45W 12V 4A	1
2.3	24VAC, 100VA POWER SUPPLY	TRIDONTIC OMT75- ⁴⁵⁰ / ₂₄	1
2.4	G652d FIBRE PATCHLEAD DUPLEX	LC to SCA, 2m	1
2.5	CAT 5 PATCHLEAD	RJ45-RJ45	1
2.6	POWER CABLE	1.5mm ² 2C/2C+E	1
2.7	1.5mm ² - 4.5mm ² TERMINALS, FUSED1 THROUGH	KDKS/35	3
2.8	1.5mm ² - 4.5mm ² TERMINALS, EARTH	EK4/35	1
2.9	4.4mm ² - 16mm ² TERMINALS THROUGH	SAK16/EN	2
2.10	1.5mm ² - 6mm ² TERMINALS EARTH	EK/35	1
2.11	TERMINAL EDD STOP	AB1 AB8935	3

TRAFFIC CONTROLLER TOP HAT - DUAL RACKS			
ITEM	DESCRIPTION	MODEL NUMBER	TOTAL
COMMUNICATION EQUIPMENT			
1.0			
1.1	CISCO SWITCH	IE 2000U	1
1.2.1	CYBERTEC 3G MODEM/ROUTER	Model: 2100E / IP10.10.10	OPTIONAL 1
1.2.2	MuLOGIC MODEM/ROUTER	ADSL-2401D.SVr2-A	OPTIONAL 1
1.3	SFPs	SFP1G-LX20-C-DI	1
1.4	150	EIRM-EXTEND	1
1.5	CISCO AIRONET INSECTOR	AIRPWRINJ-BLR2	1
1.6	X - 310 WEB ENABLED I/O MODULE	Model: X-310-24I	1
1.7	FINDER 24V DC RELAY	17RZ IND. CONT. EQ. 4C SERIES	2
1.8	FINDER 24V DC RELAY BASE	TYPE 97.01	2

NOTE:

- SOME CONTROLLER TOPHATS WILL HAVE AD-HOC NON-STANDARD EQUIPMENT LOCATED IN SHELVES. e.g. VIDEO DETECTION UNITS OR DTMR FIELDS PROCESSORS.
- 6A CIRCUIT BREAKERS MAY BE REPLACED WITH 6A 30mA RCBO CIRCUIT BREAKERS AT SITES WITH RAPID SIGN CIRCUITS AS PART OF NEW SITE UPGRADES.
- * SECOND 24V D.C. POWER SUPPLY IF POWER OVER ETHERNET (POE) REQUIRED.
- * SFP IF REQUIRED AS PER ITEM 1.3.
- * ETHERNET EXTENDER IF REQUIRED.

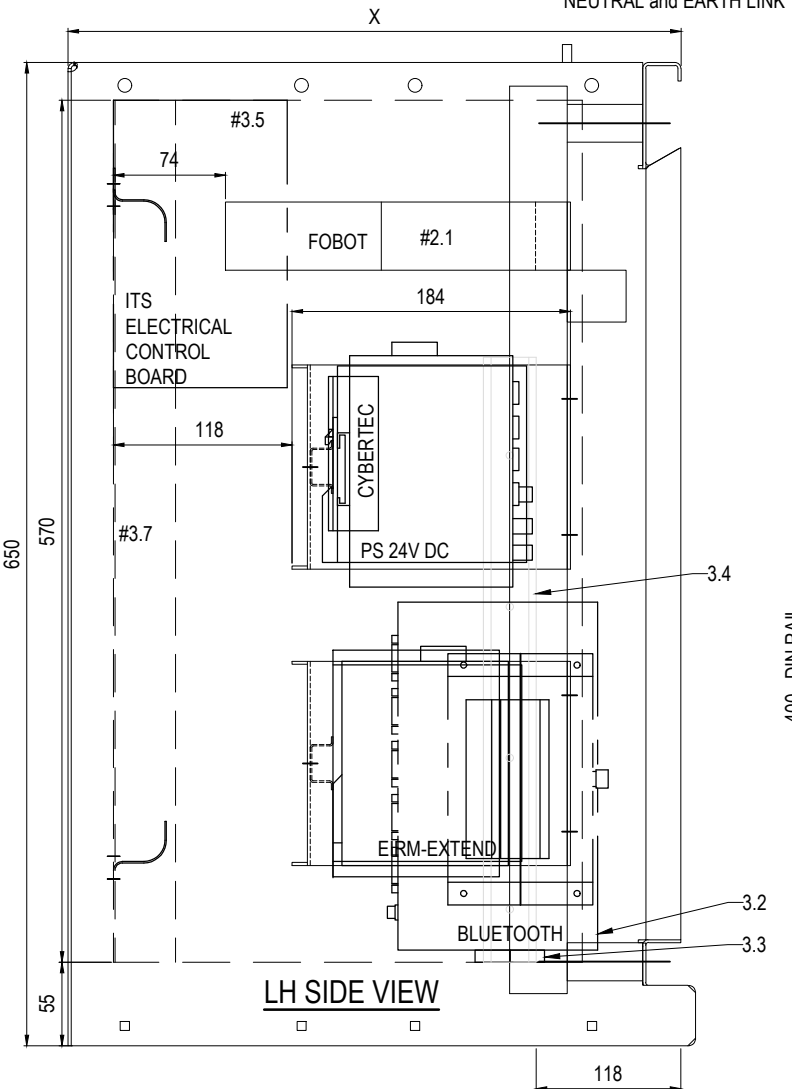


DETAIL A
N.T.S.

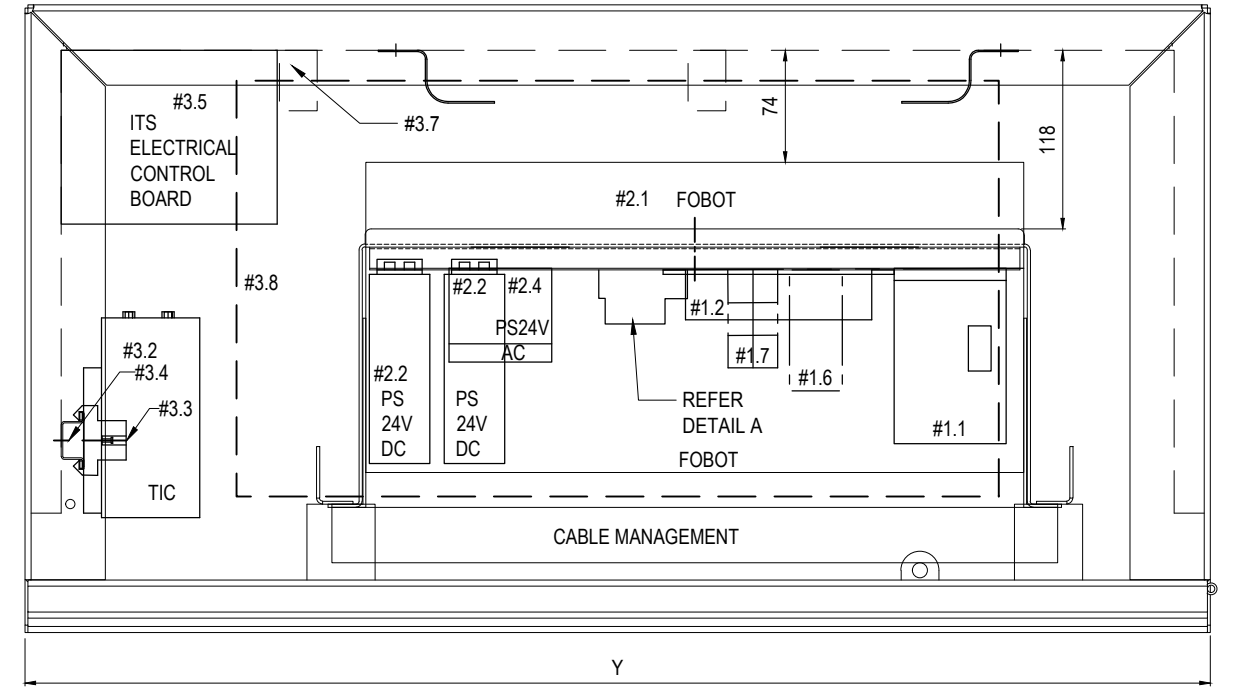
TRAFFIC CONTROLLER TOP HAT - DUAL RACKS			
ITEM	DESCRIPTION	MODEL NUMBER	TOTAL
TRAFFIC SIGNALS EQUIPMENT			
3.0			
3.1	TRAFFIC CONTROLLER TOP HAT	VARIOUS	1
3.2	TIC (TRAFFIC INFRAStructure CONTROL)	MODEL ECW-281BWD-R10-LK-MD 625 1GB	1
3.3	ENDSTOP DIN RAIL	TERMINAL END STOP	1
3.4	DIN RAIL - HAT TYPE, 3.5mm	GENERIC	400 lg
3.5	COMMS CONTROL BOARD	4C 15 SERIES CLIPSAL	1
3.6	CIRCUIT BREAKER	240VAC, 6A, C CURVE	4
3.X	CIRCUIT BREAKER	10A C CURVE	1
3.7	LE GRAND SLOTTED DUCT	40 x 60	
3.8	HOLE CUT FOR ACCESS TO CONTROLLER CABINET		500 x 265 MIN

CONTROLLER TYPE	X	Y	Z
ECLIPSE ECI	405	784	650
ATSC4	420	807	665
QTC	415	780	650

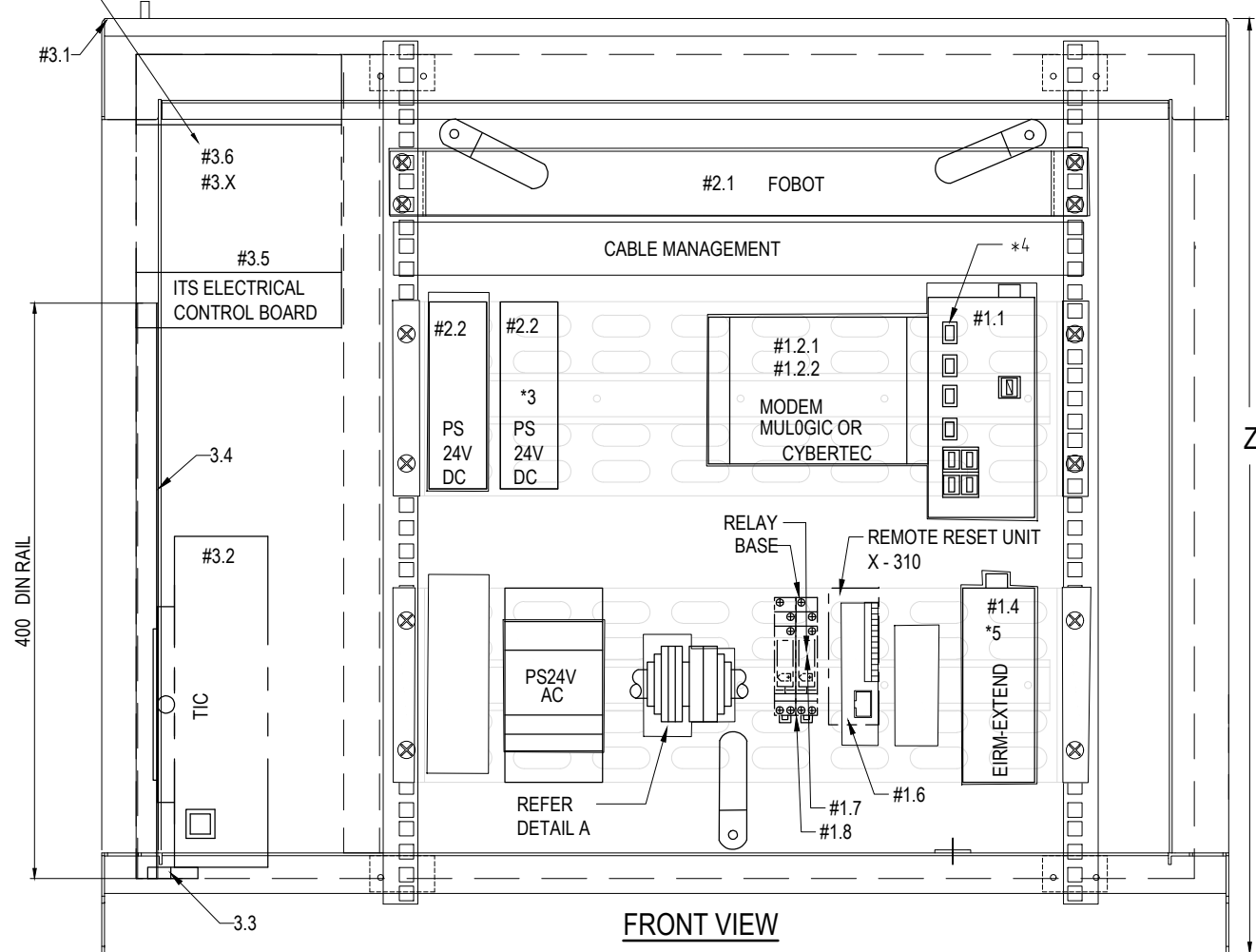
POWER BOX CLIPSAL 4C 15 SERIES
6 POLE ENCLOSURE or EQUIVALENT
WITH 4x6amp
1x10amp
"C" CURVE MINITURE CIRCUIT BREAKER
NEUTRAL and EARTH LINK



LH SIDE VIEW



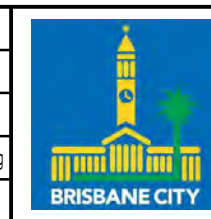
TOP VIEW



FRONT VIEW

ISSUE	AMENDMENT	DRAWN DATE	CHK'D DATE	APPR'D DATE
B	RENAME CONTROL BOARD, ADDITIONAL #NUMBERS	BW 8.02.18	DK Feb '18	DK Feb '18
A	ORIGINAL ISSUE	APR '14	APR '14	APR '14

DRAWING AUTHORISED FOR PUBLICATION			
<i>I. Condric, July 2018</i>			
PRINCIPAL ENGINEER STRATEGIC ASSET MANAGEMENT PLANNING			
DESIGN APPROVED			
<i>D. Kroning 12.02.2018</i>			
TRAFFIC SIGNALS ENGINEERING MANAGER CONGESTION REDUCTION UNIT			
DESIGN	CRU	DATE	Apr '14
DRAWN	CRU	DATE	Apr '14
CHECKED	CRU	DATE	Apr '14
DRAWING FILENAME	BSD-4209 (B) Dual rack controller top hat with equipment assembly-Equipment.dwg		
ASSOCIATED PLANS			



BRISBANE CITY COUNCIL STANDARD DRAWING	
DUAL RACK CONTROLLER TOP HAT WITH EQUIPMENT ASSEMBLY	
SCALE	NOT TO SCALE
DWG No.	BSD-4209
ORIGINAL SIZE	A3
REVISION	B