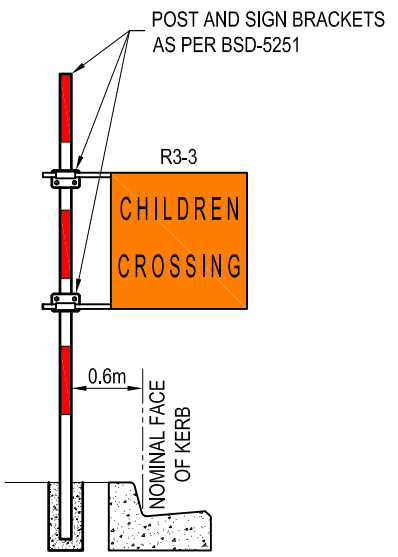
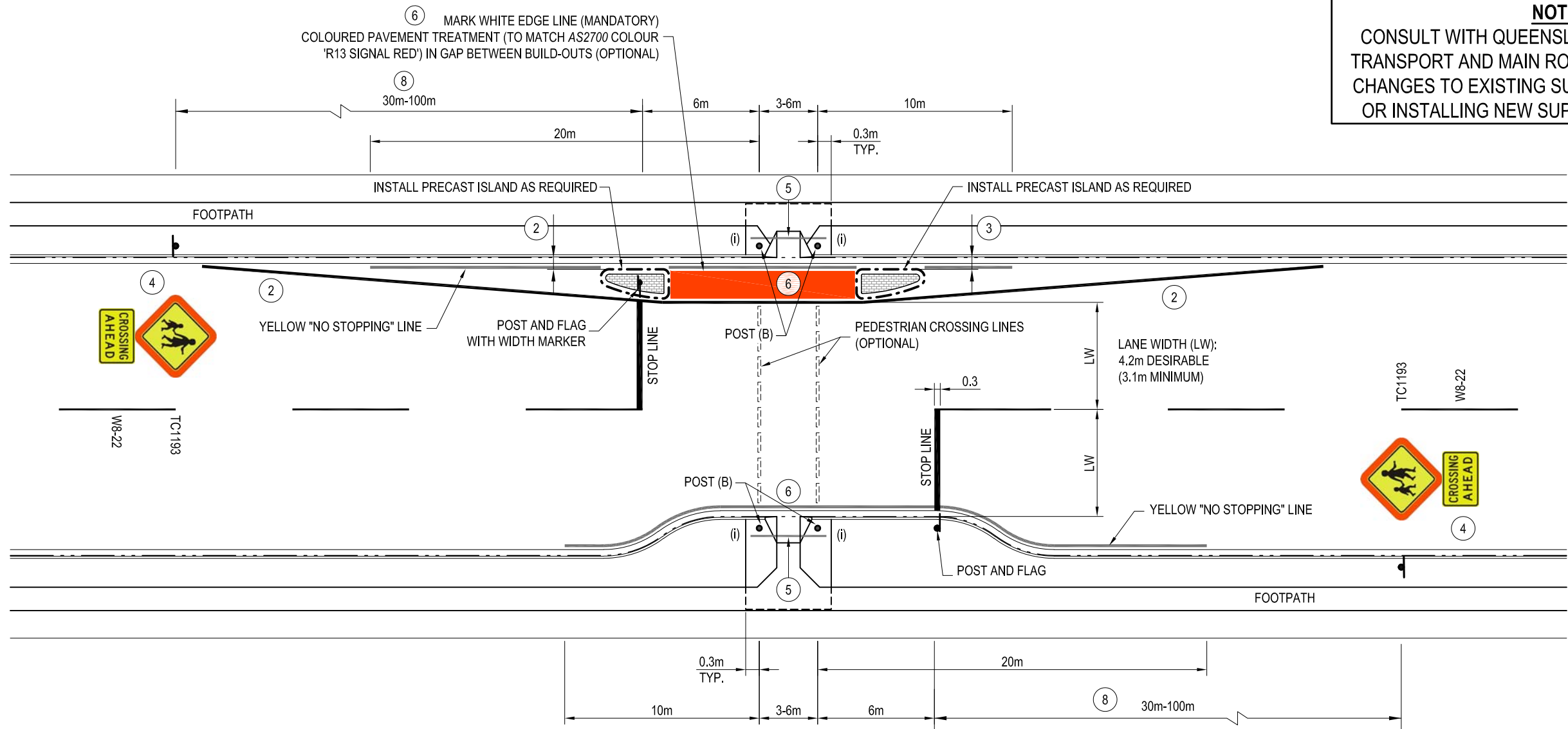
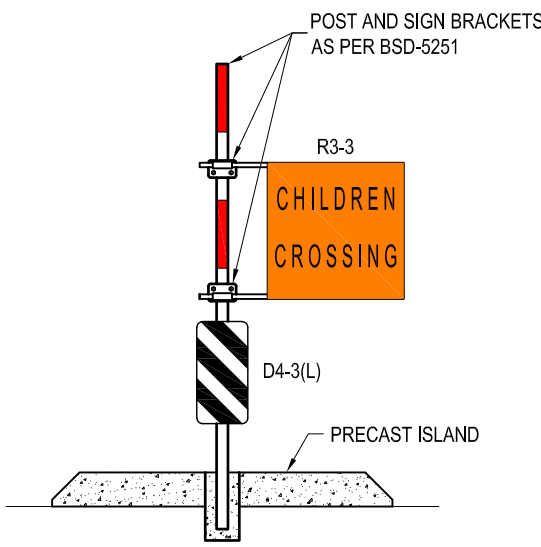


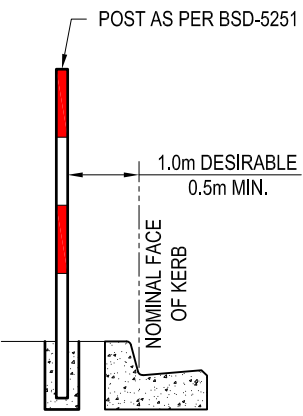
NOTE:
CONSULT WITH QUEENSLAND DEPARTMENT OF TRANSPORT AND MAIN ROADS WHEN PROPOSING CHANGES TO EXISTING SUPERVISED CROSSINGS OR INSTALLING NEW SUPERVISED CROSSINGS.



POST AND FLAG
(INTEGRATED KERB BUILD-OUT)




POST AND FLAG WITH WIDTH MARKER
(NON-INTEGRATED KERB BUILD-OUT)



POST (B)

NOTES:

- THIS DRAWING TO BE READ IN CONJUNCTION WITH AS1742.10 AND THE QUEENSLAND MANUAL OF OF UNIFORM TRAFFIC CONTROL DEVICES (MUTCD) PART 10 (HARMONISED).
- WHITE EDGELINES PAINTED AS SHOWN WITH A 1 IN 15 TAPER.
- LONGITUDINAL DRAINAGE GAP 600mm DESIRABLE (450mm MINIMUM), DESIGNER TO CONSIDER EFFECTS OF LOCALISED ROADWAY FLOODING ON ADJACENT PROPERTIES.
- ADVANCE SIGNS MAY BE SUPPLEMENTED WITH ADVANCE PAVEMENT MESSAGES.
- A LINE (APPROXIMATELY 100mm WIDE AND PAINTED YELLOW) TO BE PAINTED ON THE FOOTPATH 1m BEHIND THE FACE OF THE KERB (THIS MAY BE REDUCED TO 0.5m MIN. WHERE FOOTPATH WIDTH AND VISIBILITY ARE LIMITED) - TO INDICATE THE POSITION WHERE PEDESTRIANS SHOULD WAIT UNTIL DIRECTED TO CROSS THE CARRIAGEWAY, OR IF UNSUPERVISED A SUITABLE GAP IN TRAFFIC OCCURS IN WHICH TO SAFELY CROSS THE TRAFFIC. THIS LINE EXTENDS THE WIDTH OF THE SEALED APRON CONNECTING THE FOOTPATH AND THE KERB OR A DISTANCE OF 3-6m I.E. BETWEEN THE CROSSING POSTS (WITHOUT FLAGS).
- COLOURED PAVEMENT TREATMENT TO BE COMPLETED IN TYPE 1 COLOURED PAVEMENT TREATMENT AS PER BCC REFERENCE SPECIFICATION S155 ROAD PAVEMENT MARKING.
- KERB RAMPS INSTALLED TO BSD-5231 AND SHOULD BE INSTALLED WITH CONCRETE PADS ON EACH SIDE OF RAMP (AS INDICATED (i)) IF NO FOOTPATH, INSTALL CONCRETE APRON BEHIND KERB RAMP. REFER BDS-5231 FOR KERB RAMP DETAILS.
- THE CHILDREN SIGN (TC1193) WITH CROSSING AHEAD SIGN (W8-22) SHOULD BE LOCATED 80-100m IN ADVANCE OF THE CROSSING. THIS DISTANCE MAY BE REDUCED TO 30m (MIN.) IN LOW SPEED ENVIRONMENTS.
- FOR DESIGN NOTES, CONSTRUCTION NOTES AND LEGEND REFER TO BSD-3201.
- ALL CONCRETE TO BE GRADE N25 AND BROOM FINISHED FOR SLIP RESISTANCE REQUIREMENTS.
- ALL DIMENSIONS IN METRES (U.N.O.).

	BRISBANE CITY COUNCIL STANDARD DRAWING		PUBLISH DATE NOV 2019	
	CHILDREN'S CROSSING SUPERVISED - WITH INTEGRATED OR NON-INTEGRATED KERB BUILD-OUTS		SCALE NOT TO SCALE	
			DRAWING NUMBER BSD-5253	
		ORIGINAL SIZE A3	REVISION C	