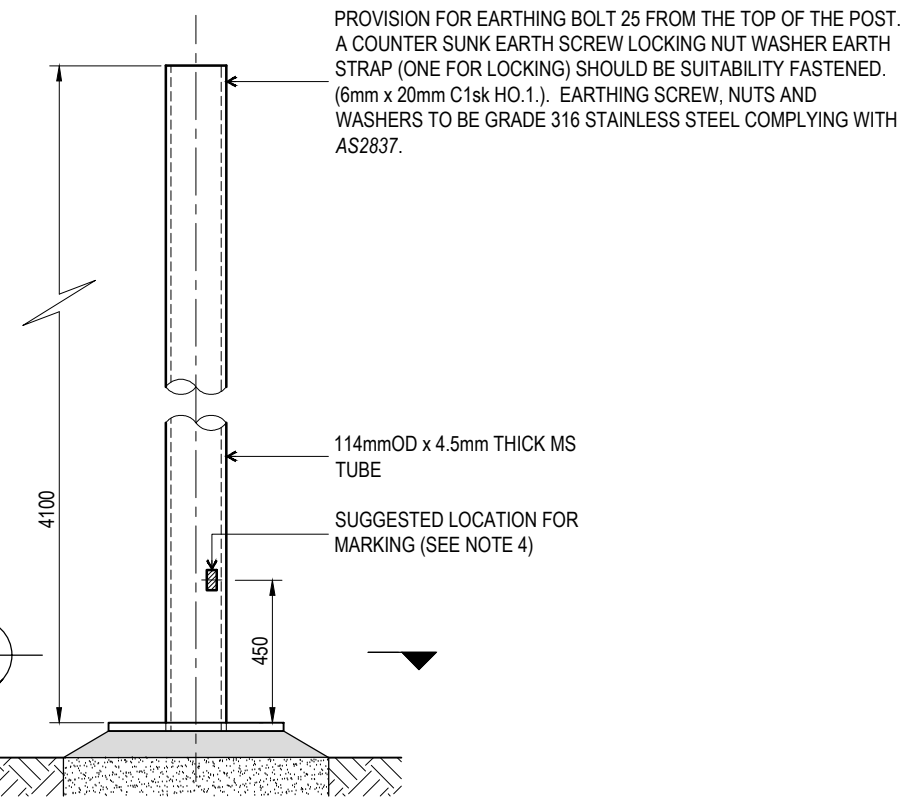
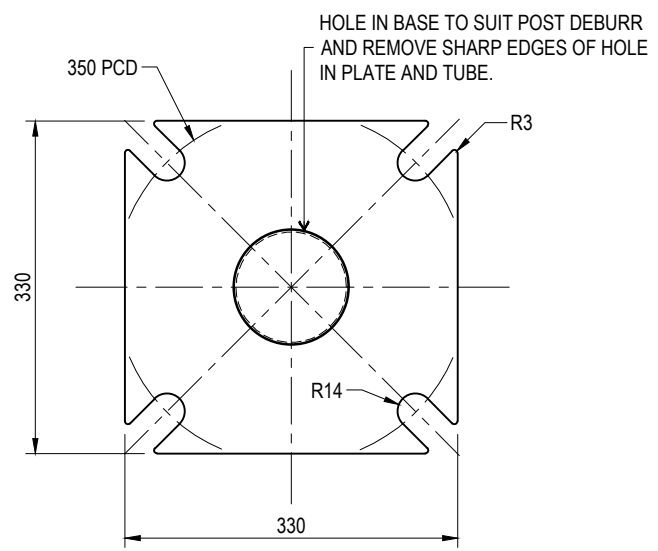
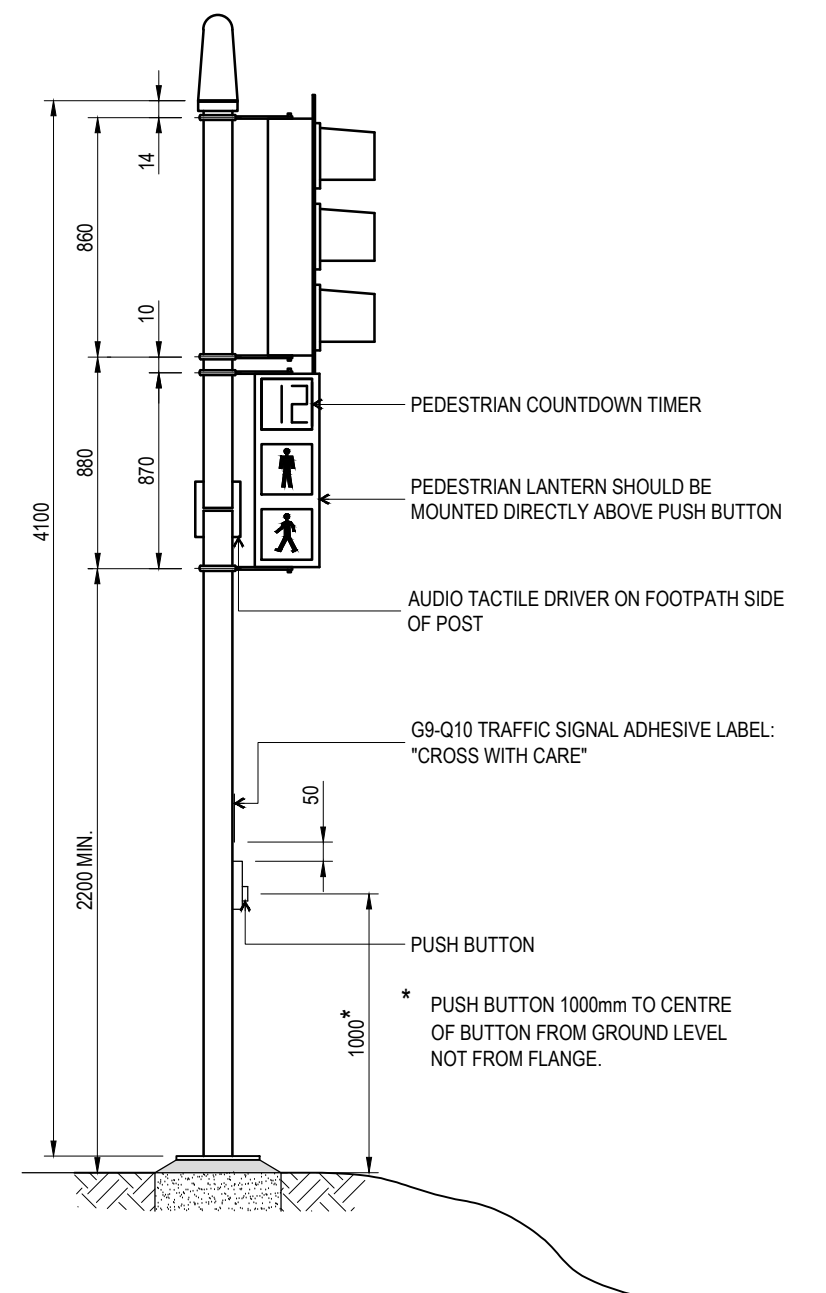


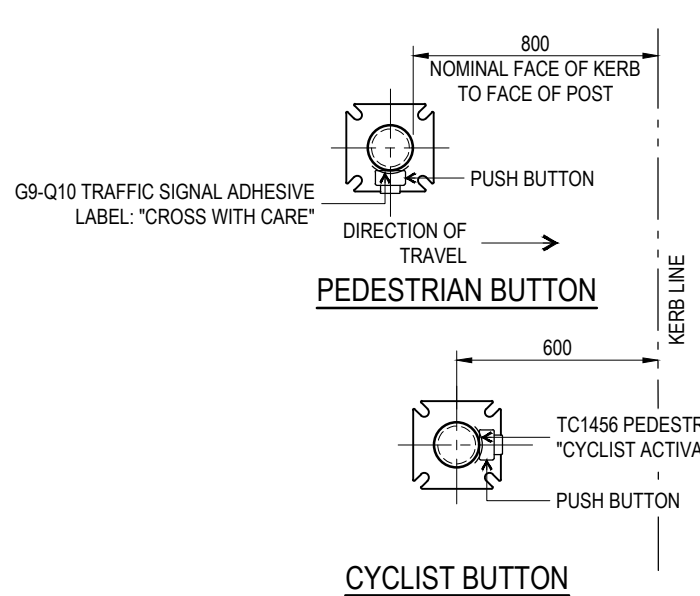
**PUSH BUTTON
PEDESTRIAN/CYCLIST POST**



**TRAFFIC SIGNAL POST
(4.1m)**



BASE PLATE DETAIL SECTION B-B
4 OF 28mm WIDE SLOTS ON 350mm PITCH CIRCLE DIAMETER
16mm THICK MILD STEEL.



PUSH BUTTON ORIENTATION

SIGNS



NOTES:

1. REMOVE ALL BURRS AND SHARP EDGES FROM HOLES THE SURFACE OF THE TUBULAR SECTION SHALL BE SMOOTH AND FREE FROM DAGS OR SHARP PROJECTIONS.
2. POST TO BE MANUFACTURED IN ACCORDANCE WITH AS2339 AND HOT DIPPED GALVANISED ITO AS/NZS4680.
3. PUSH BUTTON ASSEMBLIES TO AS2353.
4. MANUFACTURERS IDENTIFICATION AND DATE OF MANUFACTURE SHALL BE LEGIBLY AND DURABLY MARKED.
5. REFER TO BSD-4121 AND BSD-4151 FOR FOOTING DETAILS.
6. REFER TO QUEENSLAND MANUAL OF UNIFORM TRAFFIC CONTROL DEVICES (MUTCD) AND QUEENSLAND DEPARTMENT OF TRANSPORT AND MAIN ROADS DRAWING TC1456 FOR LABEL DETAILS.
7. DIMENSIONS IN MILLIMETRES (U.N.O.).

THE PURPOSE OF THIS STANDARD DRAWING IS TO PROVIDE TYPICAL DETAILS THAT SUPPORT THE DESIRED OUTCOMES OF THE BRISBANE CITY PLAN 2014 AND ASSOCIATED PLANNING SCHEME POLICIES. THE FITNESS FOR PURPOSE OF THIS STANDARD DRAWING FOR A SPECIFIC PROJECT SHOULD BE ASSESSED AND ACCEPTED BY AN APPROPRIATELY QUALIFIED DESIGNER AND/OR REGISTERED PROFESSIONAL ENGINEER OF QUEENSLAND (RPEQ).



BRISBANE CITY COUNCIL STANDARD DRAWING

POST DETAILS

PUBLISH DATE		SEP 2024
SCALE		NOT TO SCALE
DRAWING NUMBER		BSD-4122
ORIGINAL SIZE	REVISION	
A3	D	