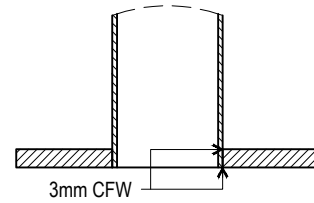
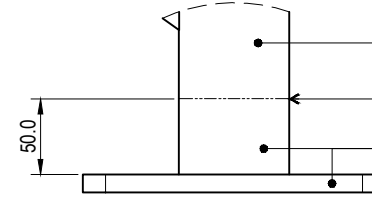


DETAIL A
BCC LOGO DETAIL
SCALE 1:5

DETAIL B
BIKE LOGO DETAIL
SCALE 1:5

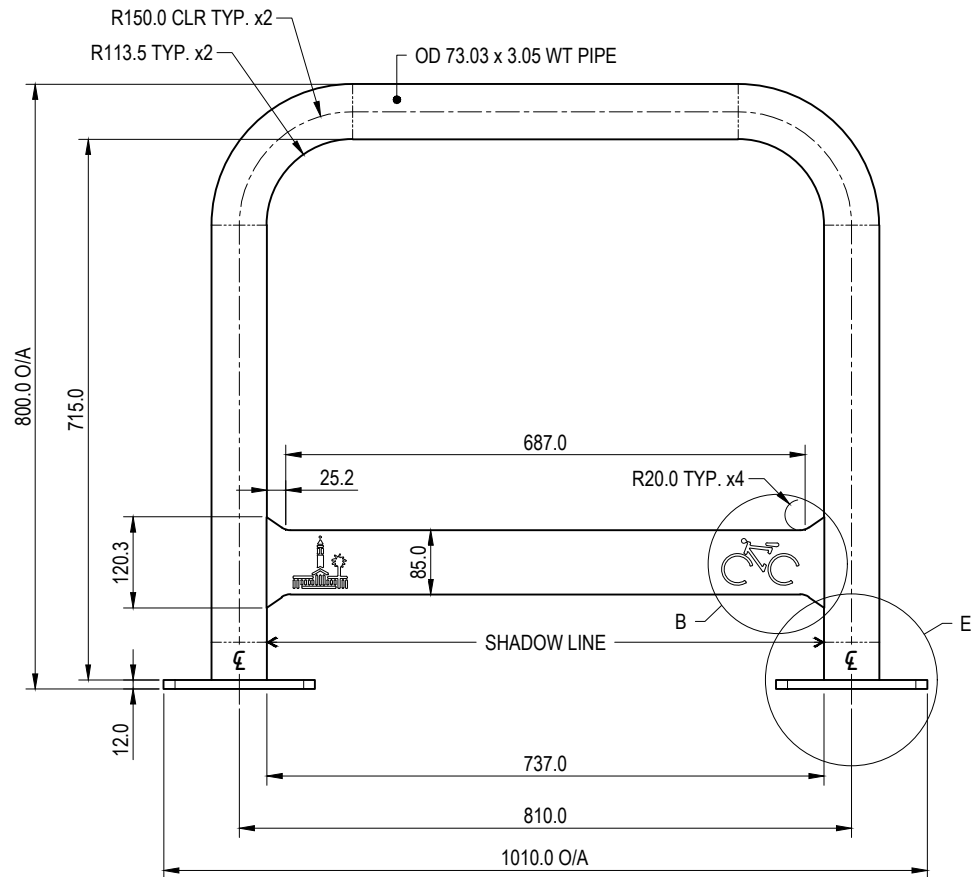


DETAIL C
FOOT PLATE DETAIL
SCALE 1:5

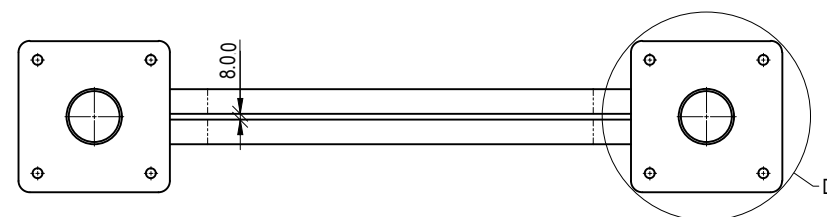


DETAIL E
SURFACE FINISH DETAIL
SCALE 1:5

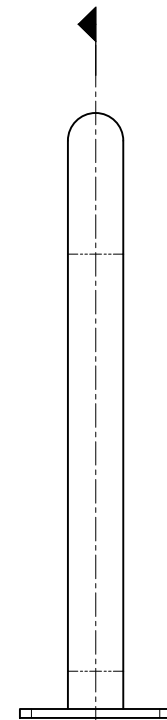
ALL SURFACES ABOVE SHADOW LINE TO BE 600 GRIT POLISHED (POLISH DIRECTION TO BE RADIAL)
SHADOW LINE
ALL SURFACES BELOW SHADOW LINES TO BE GARNET BLASTED AFTER POLISHING



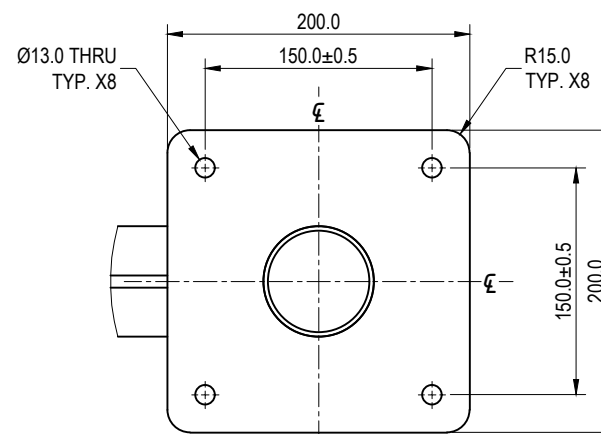
FRONT VIEW



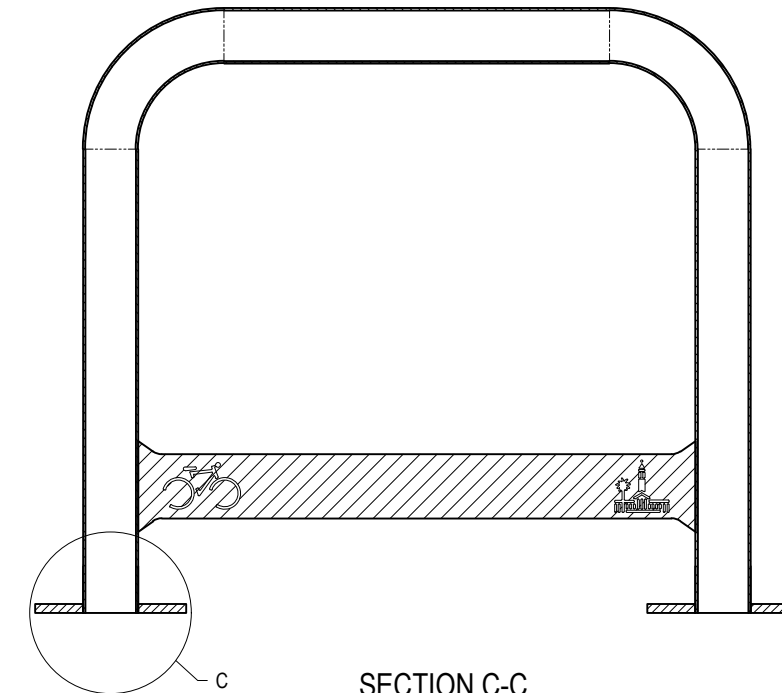
BOTTOM VIEW



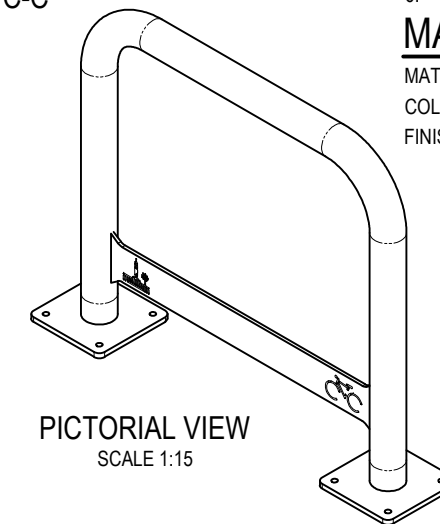
SIDE VIEW



DETAIL D
FOOT PLATE
UNDERSIDE DETAIL
SCALE 1:5



SECTION C-C



PICTORIAL VIEW
SCALE 1:15

STANDARDS

DESIGNED IN ACCORDANCE WITH, AND FABRICATION TO MEET THE FOLLOWING STANDARDS:

- AS1428.4.1:2009, TACTILE GROUND SURFACE INDICATORS FOR THE ORIENTATION OF PEOPLE WITH VISION IMPAIRMENT.
- AS1627.4 METAL FINISHING - PREPARATION AND PRE-TREATMENT OF SURFACES - ABRASIVE BLAST CLEANING OF STEEL.
- AS2312:2002/AMDT 1:2004, GUIDE TO PROTECTION OF IRON AND STEEL AGAINST EXTERIOR ATMOSPHERIC CORROSION, 1994.
- GUIDE TO ENGINEERING PRACTICE, 'PEDESTRIANS', PART 13, AUSTRROADS.
- AUSTRALIAN ROAD RULES, 1999, WWW.NRTC.GOV.AU
- AS4506 -2005, METAL FINISHING-THERMOSET POWDER COATINGS.
- AS4680:2006, HOT DIP GALVANISING.
- AS1742.9-2000, MANUAL OF UNIFORM TRAFFIC CONTROL DEVICES, 'BICYCLE FACILITIES'.
- GUIDE TO ENGINEERING PRACTICE, 'BICYCLES', PART 14, AUSTRROADS.
- AUSTRALIAN ROAD RULES, 1999, WWW.NRTC.GOV.AU
- AS2890.3-1993 PARKING FACILITIES PART 3
- AS 1742.9- 2000 MANUAL OF UNIFORM TRAFFIC CONTROL DEVICES PART 9: BIKE FACILITIES

NOTES:

- WELDING TO BE ACCORDANCE TO AS1554.1 CAT GP WELDING, ALL SHARP EDGES & BURRS REMOVED.
- PART SHOULD BE SUPPLIED CLEAN AND FREE FROM MARKS, BURRS, SCUFFS, DISTORTION AND WARPAGE.
- ENSURE ANTI-SEIZE IS ON ALL NUTS AND BOLTS PRIOR TO ASSEMBLY.
- DRAWING TO AS1100 DRAWING STANDARDS.
- 316 S.S AND 316 S.S FASTENERS TO BE USED THROUGHOUT FOR COASTAL INSTALLATIONS OR ANY ENVIRONMENT WITH HIGH CORROSION
- ALL TOLERANCES $\pm 1.5\text{mm}$ UNLESS OTHERWISE SPECIFIED.

MATERIAL

MATERIAL: 316 STAINLESS STEEL
COLOUR: NATURAL
FINISH: 600 GRIT POLISHED/GARNET BLASTED

THE PURPOSE OF THIS STANDARD DRAWING IS TO PROVIDE TYPICAL DETAILS THAT SUPPORT THE DESIRED OUTCOMES OF THE BRISBANE CITY PLAN 2014 AND ASSOCIATED PLANNING SCHEME POLICIES. THE FITNESS FOR PURPOSE OF THIS STANDARD DRAWING FOR A SPECIFIC PROJECT SHOULD BE ASSESSED AND ACCEPTED BY AN APPROPRIATELY QUALIFIED DESIGNER AND/OR REGISTERED PROFESSIONAL ENGINEER OF QUEENSLAND (RPEQ).



BRISBANE CITY COUNCIL STANDARD DRAWING

SINGLE BIKE RACK
SHEET 1 OF 2

PUBLISH DATE		SEP 2024
SCALE		1:10/AS SHOWN
DRAWING NUMBER		BSD-5051
ORIGINAL SIZE	REVISION	
A3	B	

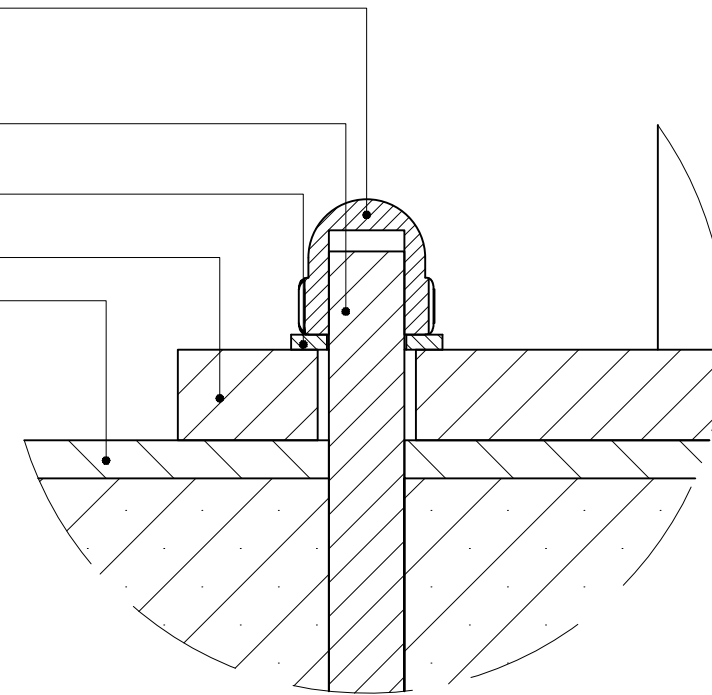
- M10 DOME NUT (304 S.S)
- ENSURE SUFFICIENT CLEARANCE BETWEEN END OF EXPANSION BOLT THREAD AND INSIDE OF DOME NUT CAP PRIOR TO ASSEMBLY.
 - RECOMMENDED ASSEMBLY TORQUE FOR M10 DOME NUT =17N.M (REFF AS1111 PROPERTY CLASS 4.6 OR EQUIVALENT, COMMERCIAL LOW TENSILE BOLTS).

BOLT FIXED TO PAVEMENT (M10 x 150mm EXPANSION BOLT)

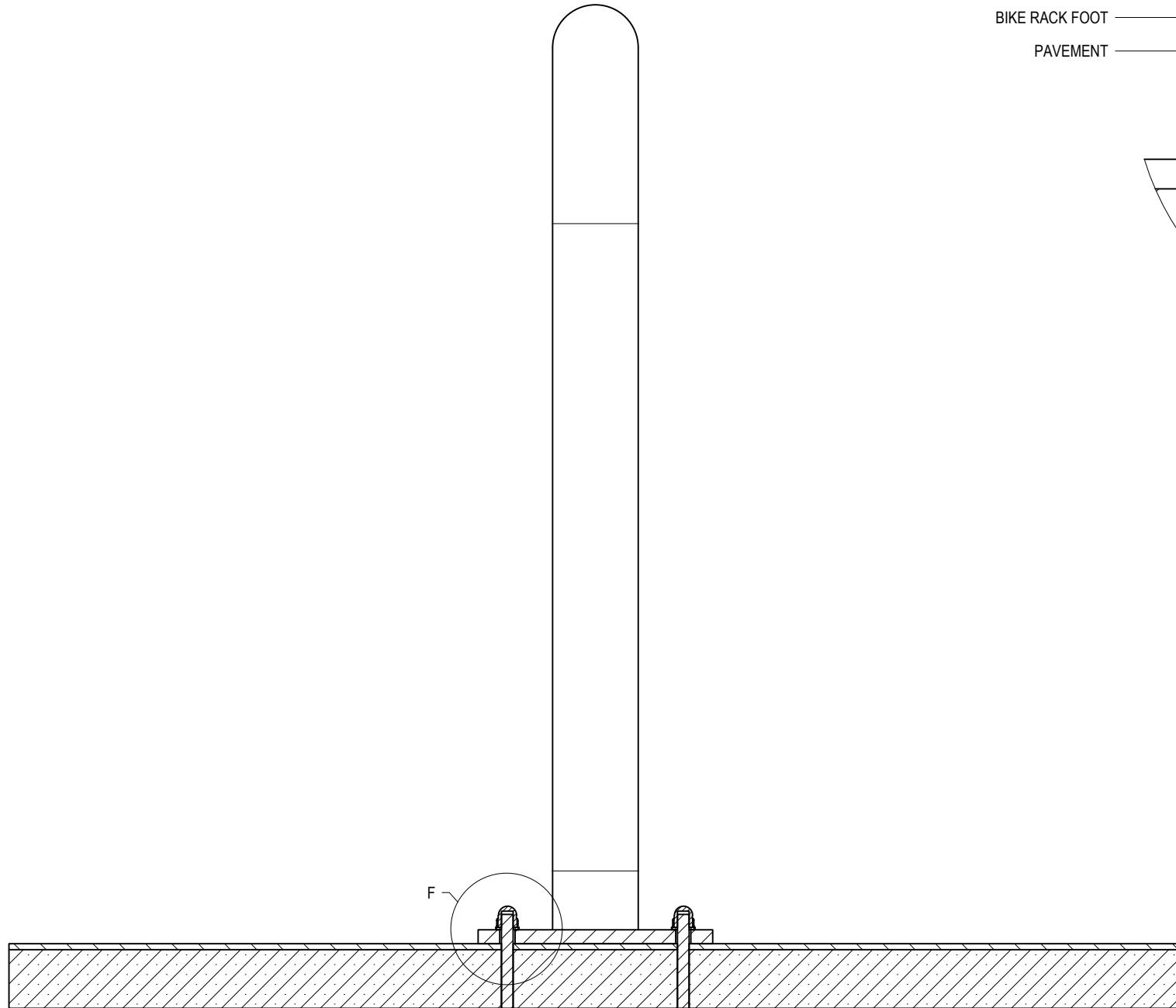
M10 WASHER (304 S.S)

BIKE RACK FOOT

PAVEMENT



DETAIL F
INSTALLATION DETAIL
SCALE 1:1



SECTION VIEW OF INSTALLATION

STANDARDS

DESIGNED IN ACCORDANCE WITH, AND FABRICATION TO MEET THE FOLLOWING STANDARDS:

1. AS1428.4.1:2009, TACTILE GROUND SURFACE INDICATORS FOR THE ORIENTATION OF PEOPLE WITH VISION IMPAIRMENT.
2. AS1627.4 METAL FINISHING - PREPARATION AND PRE-TREATMENT OF SURFACES - ABRASIVE BLAST CLEANING OF STEEL.
3. AS2312:2002/AMDT 1:2004, GUIDE TO PROTECTION OF IRON AND STEEL AGAINST EXTERIOR ATMOSPHERIC CORROSION, 1994.
4. GUIDE TO ENGINEERING PRACTICE, 'PEDESTRIANS', PART 13, AUSTRROADS.
5. AUSTRALIAN ROAD RULES , 1999, WWW.NRTC.GOV.AU
6. AS4506 -2005, METAL FINISHING-THERMOSET POWDER COATINGS.
7. AS4680:2006, HOT DIP GALVANISING.
8. AS1742.9-2000, MANUAL OF UNIFORM TRAFFIC CONTROL DEVICES, 'BICYCLE FACILITIES'.
9. GUIDE TO ENGINEERING PRACTICE, 'BICYCLES', PART 14, AUSTRROADS.
10. AUSTRALIAN ROAD RULES , 1999, WWW.NRTC.GOV.AU
11. AS2890.3-1993 PARKING FACILITIES PART 3
12. AS 1742.9- 2000 MANUAL OF UNIFORM TRAFFIC CONTROL DEVICES PART 9: BIKE FACILITIES

NOTES:

1. WELDING TO BE ACCORDANCE TO AS1554.1 CAT GP WELDING, ALL SHARP EDGES & BURRS REMOVED.
2. PART SHOULD BE SUPPLIED CLEAN AND FREE FROM MARKS, BURRS, SCUFFS, DISTORTION AND WARPAGE.
3. ENSURE ANTI-SEIZE IS ON ALL NUTS AND BOLTS PRIOR TO ASSEMBLY.
4. DRAWING TO AS1100 DRAWING STANDARDS.
5. 316 S.S AND 316 S.S FASTENERS TO BE USED THROUGHOUT FOR COASTAL INSTALLATIONS OR ANY ENVIRONMENT WITH HIGH CORROSION
6. ALL TOLERANCES $\pm 1.5\text{mm}$ UNLESS OTHERWISE SPECIFIED.

MATERIAL

MATERIAL: SEE COMPONENT DRAWING

COLOUR: SEE COMPONENT DRAWING

FINISH: SEE COMPONENT DRAWING

ITEM NO.	DESCRIPTION	QTY.
1	SINGLE BIKE RACK	1
2	M10 304 STAINLESS STEEL WASHER	8
3	M10 304 STAINLESS STEEL DOME NUT	6

THE PURPOSE OF THIS STANDARD DRAWING IS TO PROVIDE TYPICAL DETAILS THAT SUPPORT THE DESIRED OUTCOMES OF THE BRISBANE CITY PLAN 2014 AND ASSOCIATED PLANNING SCHEME POLICIES. THE FITNESS FOR PURPOSE OF THIS STANDARD DRAWING FOR A SPECIFIC PROJECT SHOULD BE ASSESSED AND ACCEPTED BY AN APPROPRIATELY QUALIFIED DESIGNER AND/OR REGISTERED PROFESSIONAL ENGINEER OF QUEENSLAND (RPEQ).



BRISBANE CITY COUNCIL STANDARD DRAWING

SINGLE BIKE RACK
INSTALLATION
SHEET 2 OF 2

PUBLISH DATE		SEP 2024
SCALE		AS SHOWN
DRAWING NUMBER		BSD-5051
ORIGINAL SIZE	REVISION	
A3	B	