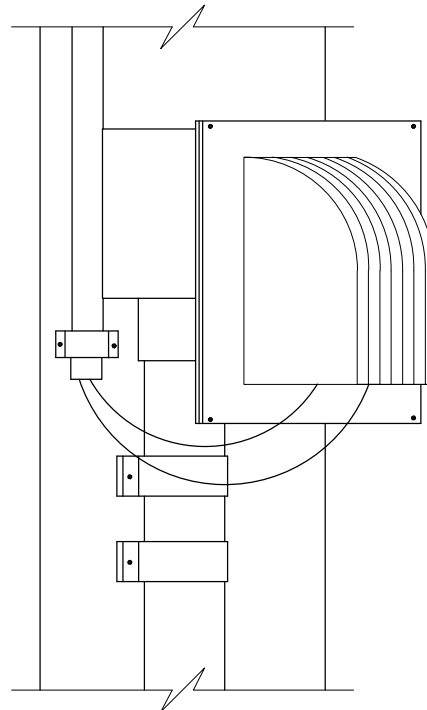


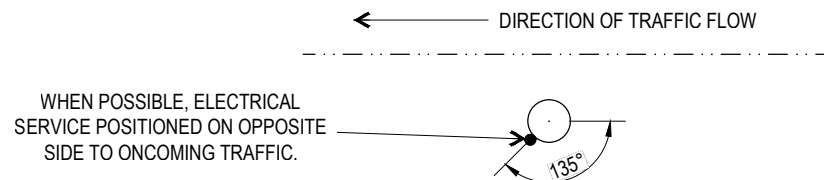
**OVERHEAD SERVICE**

NOT TO SCALE



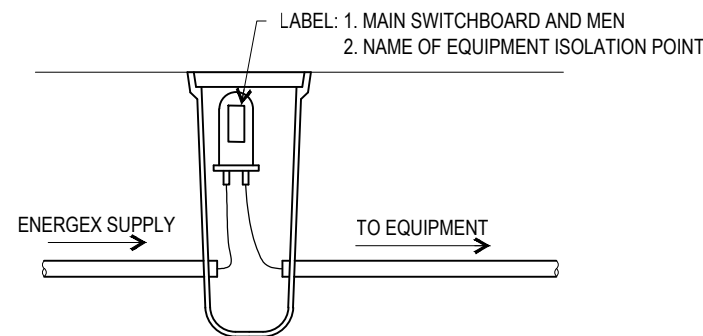
**DETAIL 'A'**

NOT TO SCALE



**POSITION OF SERVICE**

NOT TO SCALE



**UNDERGROUND FUSED SWITCHBOARD**

NOT TO SCALE

**NOTES:**

- ELECTRICAL DISTRIBUTION ENTITIES RESPONSIBILITIES IN PROVIDING THE SERVICE ARE AS FOLLOWS:
  - TO SUPPLY, INSTALL AND MAINTAIN A PRIMARY FUSED SERVICE TO THE BRISBANE CITY COUNCIL MAINS CONNECTION BOX;
  - TO TEST POLARITY OF SERVICE AND CONNECT ENERGEX SERVICE TO INSTALLATION.
- ASSET OWNERS RESPONSIBILITIES ARE AS FOLLOWS:
  - TO MAKE APPLICATION FOR SUPPLY OF ELECTRICITY TO ENERGEX.
- CONTRACTORS RESPONSIBILITIES ARE AS FOLLOWS:
  - TO CARRY OUT INSTALLATION WORK IN ACCORDANCE WITH AS3000 "SAA WIRING RULES" AND TELECOMMUNICATIONS ACT (1995) (FEDERAL);
  - TO SUBMIT AN EWR TO ENERGEX;
  - TO SUBMIT TO THE DISTRIBUTION ENTITY A DISCONNECTION NOTICE WHEN THE SUPPLY IS NO LONGER REQUIRED;
  - TO SUBMIT TO ENERGEX A SCHEDULE OF LOADING;
  - TO SUPPLY AND INSTALL SERVICE POLE (IF REQUIRED);
  - TO INSPECT AND PERFORM THE MANDATORY TESTING OF THE ELECTRICAL INSTALLATION IN ACCORDANCE WITH AS3000 "SAA WIRING RULES";
  - RECORD AND SUPPLY TEST RESULTS; AND
  - SUPPLY A CERTIFICATE OF TESTING.
  - CONTRACTOR NEEDS TO BE AN ENERGEX/ENERGY QUEENSLAND AUTHORISED PERSON WHEN PERFORMING WORKS UNDER NOTES 7,8 AND 9 BELOW.
- DIMENSIONS IN MILLIMETRES (U.N.O.).
- TYPE 4 PIT SHALL BE USED FOR ALL LIGHTING INSTALLATIONS. TYPE 8 OR ROUND PITS WHERE 51 CORE CABLE IS USED, SHALL BE USED FOR TRAFFIC SIGNAL ROAD CROSSINGS.
- CABLE SIZE TO BE A MINIMUM OF 16mm<sup>2</sup> AND SELECTED TO COMPLY WITH AS:3000 VOLTAGE DROP, CURRENT RATING AND EARTH FAULT LOOP IMPEDANCE REQUIREMENTS.
- DROPDOWN WITH MAINS CONNECTION BOX ON ENERGEX POLE:**  
 FOR NEW METERED CONNECTIONS, MAINS CONNECTION BOXES ON ENERGEX POLES ARE NOT PERMISSIBLE WITHOUT WRITTEN EXEMPTION.  
 FOR NEW UNMETERED CONNECTIONS, CONTRACTOR TO INSTALL NEW MAINS CONNECTION BOX ON ENERGEX POLE, RUN NEW MAINS, CONNECT IN NEW MAINS CONNECTION BOX AND HAVE CABLE IN SWITCHBOARD TAPED UP AND READY FOR TESTING AND INSTALLATION DURING ENERGEX SITE VISIT. CONTRACTOR TO SUBMIT EWR AND HAVE ENERGEX COME OUT TO CONNECT NEW MAINS WITH CONTRACTOR PRESENT.  
 FOR MODIFICATIONS TO AN EXISTING UNMETERED SERVICE, IF THE EXISTING MAINS CONNECTION BOX AND DROPDOWN SERVICES ARE SUITABLE AND TO CURRENT INSTALLATION STANDARDS, CONTRACTOR TO RUN NEW MAINS AND CAN CONNECT TO LOAD SIDE OF EXISTING MAINS CONNECTION BOX. IF THE EXISTING MAINS CONNECTION BOX OR DROPDOWN SERVICE IS NOT SUITABLE AND REQUIRES MODIFICATIONS, A NEW MAINS CONNECTION BOX INSTALLATION WILL BE REQUIRED - REFER TO NEW UNMETERED CONNECTIONS PROCESS ABOVE.
- ENERGEX SUPPLY PILLAR:**  
 CONTRACTOR TO RUN NEW MAINS CABLE EITHER UTILISING EXISTING CONDUIT OR INSTALL NEW CONDUIT, LEAVE NEW CABLE IN PILLAR TAGGED OUT READY FOR ENERGEX CONNECTION AND HAVE CABLE IN SWITCHBOARD TAPED UP READY FOR TESTING AND INSTALLATION DURING ENERGEX SITE VISIT. CONTRACTOR TO SUBMIT EWR AND HAVE ENERGEX COME OUT TO CONNECT NEW MAINS WITH CONTRACTOR PRESENT.
- BELL JOINT OFF DIRECT ENERGEX FEED:**  
 CONTRACTOR TO RUN NEW MAINS CABLE TO POINT OF SUPPLY BELL JOINT LOCATION, LEAVE NEW CABLE IN PIT TAGGED OUT READY FOR CONNECTION AND HAVE CABLE IN SWITCHBOARD TAPED UP READY FOR TESTING AND INSTALLATION DURING ENERGEX SITE VISIT. CONTRACTOR TO SUBMIT EWR AND HAVE ENERGEX COME OUT TO CONNECT NEW MAINS WITH CONTRACTOR PRESENT.

THE PURPOSE OF THIS STANDARD DRAWING IS TO PROVIDE TYPICAL DETAILS THAT SUPPORT THE DESIRED OUTCOMES OF THE BRISBANE CITY PLAN 2014 AND ASSOCIATED PLANNING SCHEME POLICIES. THE FITNESS FOR PURPOSE OF THIS STANDARD DRAWING FOR A SPECIFIC PROJECT SHOULD BE ASSESSED AND ACCEPTED BY AN APPROPRIATELY QUALIFIED DESIGNER AND/OR REGISTERED PROFESSIONAL ENGINEER OF QUEENSLAND (RPEQ).



BRISBANE CITY COUNCIL STANDARD DRAWING

MAINS CONNECTION TO  
ENERGEX EQUIPMENT

PUBLISH DATE		JUN 2023
SCALE		NOT TO SCALE
DRAWING NUMBER		BSD-4002
ORIGINAL SIZE	REVISION	
A3	C	