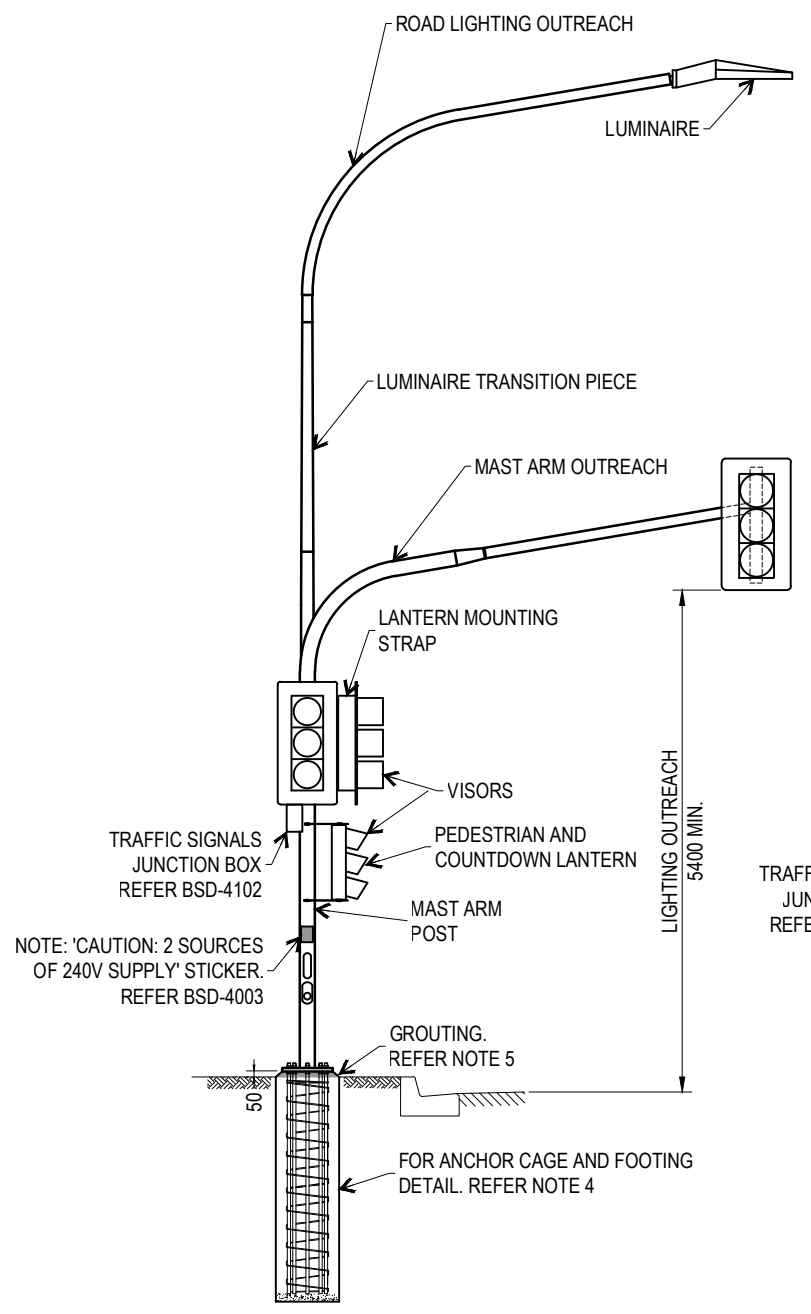
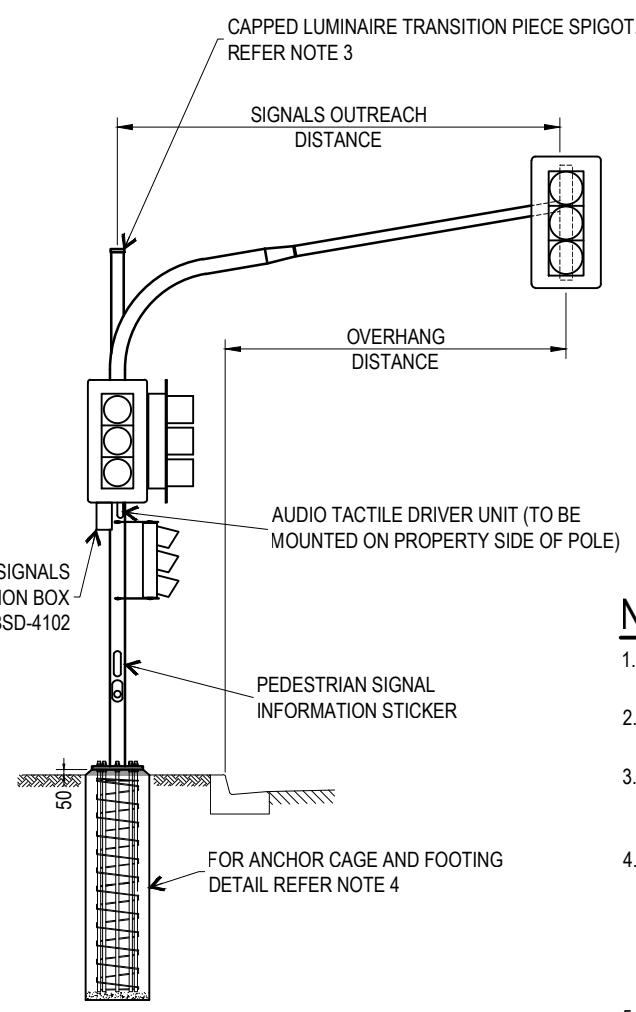


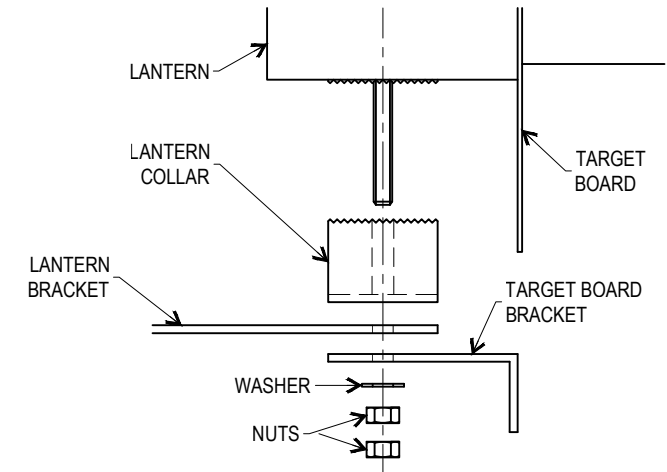
JOINT USE TRAFFIC SIGNAL & ROAD LIGHT POLE



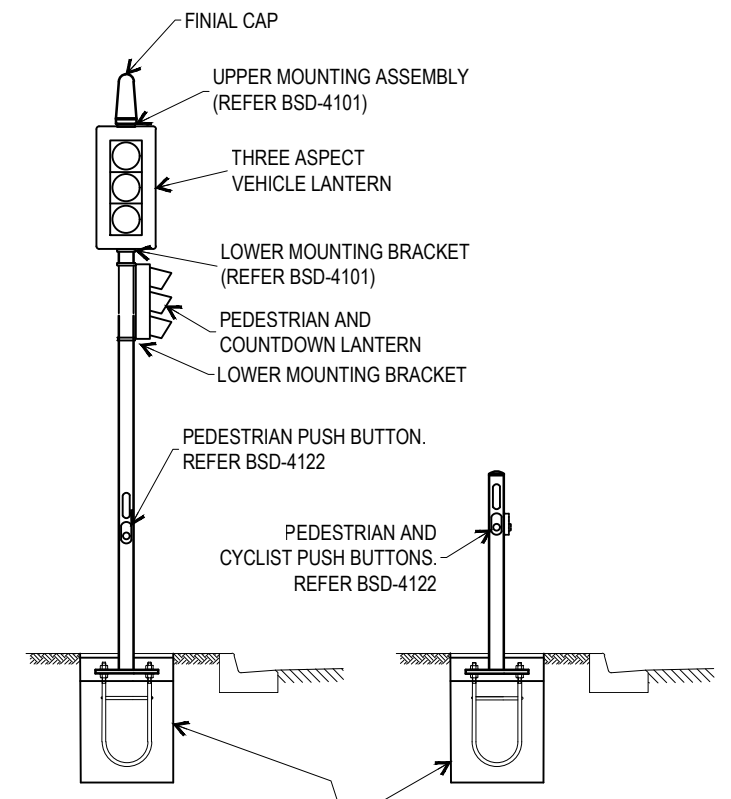
COMBINED JOINT USE TRAFFIC SIGNAL & ROAD LIGHT MAST ARM (MAINTAINED BY BCC)



TRAFFIC SIGNAL MAST ARMS



ATTACHMENT OF LANTERN TO MOUNTING BRACKET



TRAFFIC SIGNAL POST

PUSH BUTTON POST

NOTES:

- SEE AS2339 SECTION 3.2 FIG.3.2 FOR ARRANGEMENT OF FASTENERS USED FOR THE ATTACHMENT OF LANTERN MOUNTING STRAPS TO POST.
- SEE EXPLODED VIEW FOR ATTACHMENT OF LANTERN TO MOUNTING BRACKET. LOCKING MECHANISM NOT TO BE CIRCUMVENTED.
- TRAFFIC SIGNAL MAST ARM POLE MAY BE CONVERTED TO COMBINED JOINT USE TRAFFIC SIGNAL AND ROAD LIGHT MAST ARM BY REMOVING SPIGOT CAP AND INSTALLING LUMINAIRE TRANSITION PIECE AND LIGHTING OUTREACH.
- FOOTINGS REQUIREMENT FOR JOINT USE AND TRAFFIC SIGNAL MAST ARMS:
 - FOR 2.5m & 5.0m MAST ARMS USING DTMR TYPE MAST ARM: USE BCC STANDARD DRAWING BSD-4154;
 - FOR 6.0m & 6.5m MAST ARMS: USE DTMR DRAWING SD1403.
 - FOR 8.5m & 11.0m MAST ARMS: USE BCC STANDARD DRAWING BSD-4155;
- MIX SAND/CEMENT GROUT IN A 3:1 RATIO BY VOLUME. ADD ENOUGH WATER TO GIVE A WORKABLE MIX. PACK THE MIX BENEATH THE BASE PLATE. ON SQUARE BASE PLATE POLES, CHAMFER SIDES OF PACKED GROUT TO GROUND AT 45°.
- ALL DIMENSIONS IN MILLIMETRES (U.N.O.).

THE PURPOSE OF THIS STANDARD DRAWING IS TO PROVIDE TYPICAL DETAILS THAT SUPPORT THE DESIRED OUTCOMES OF THE BRISBANE CITY PLAN 2014 AND ASSOCIATED PLANNING SCHEME POLICIES. THE FITNESS FOR PURPOSE OF THIS STANDARD DRAWING FOR A SPECIFIC PROJECT SHOULD BE ASSESSED AND ACCEPTED BY AN APPROPRIATELY QUALIFIED DESIGNER AND/OR REGISTERED PROFESSIONAL ENGINEER OF QUEENSLAND (RPEQ).



BRISBANE CITY COUNCIL STANDARD DRAWING

TRAFFIC SIGNAL POST & POLE INSTALLATION

PUBLISH DATE		JUN 2023	
SCALE		NOT TO SCALE	
DRAWING NUMBER		BSD-4121	
ORIGINAL SIZE	REVISION	A3	C