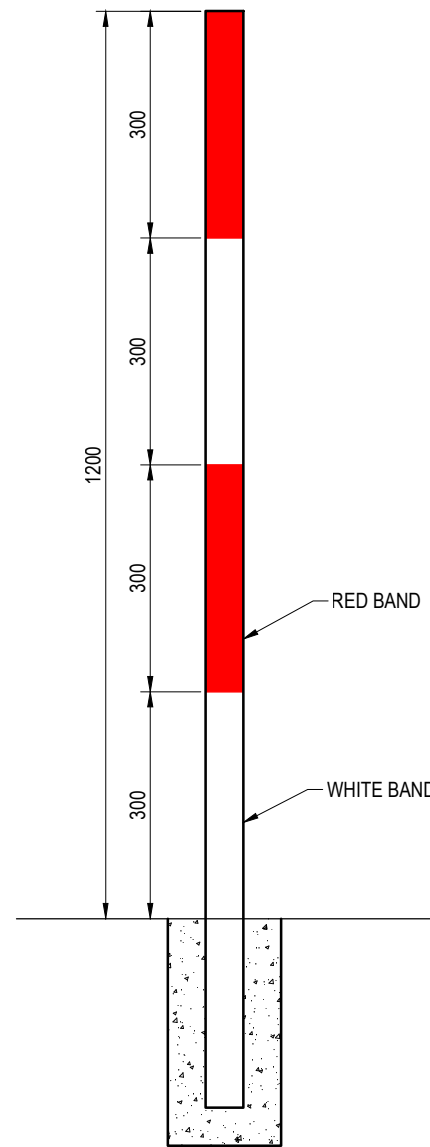
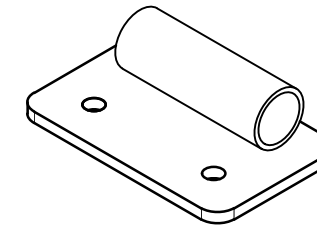


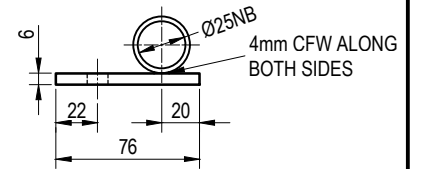
POST AND FLAG



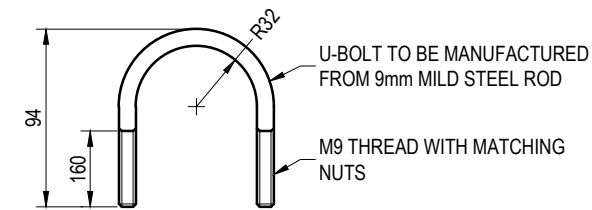
POST



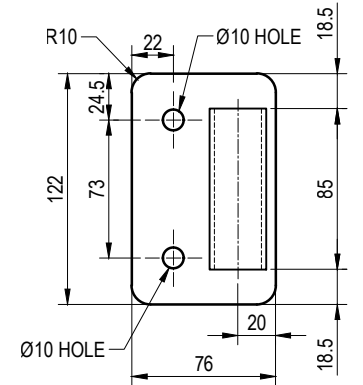
**FLAG BRACKET
PICTORIAL VIEW**



**FLAG BRACKET
END ELEVATION**



**FLAG BRACKET
U-BOLT**



**FLAG BRACKET
PLAN VIEW**

NOTES:

1. POST TO BE 50NB.
2. ALTERNATE 300 WIDE BANDS OF WHITE (TWO OR THREE BANDS) AND RED (TWO OR THREE BANDS) OF REFLECTIVE TAPE TO BE CLASS 1A RETROREFLECTIVE SHEETING TO AS1906.2 APPLIED TO POST AS SHOWN.
3. THIS DRAWING TO BE READ IN CONJUNCTION WITH AS1742.10 AND THE QUEENSLAND MANUAL OF OF UNIFORM TRAFFIC CONTROL DEVICES (MUTCD) PART 10 (HARMONISED).
4. BRACKET TO BE HOT DIPPED GALVANISED PRIOR TO PAINTING WHITE.
5. U-BOLT TO BE MANUFACTURED FROM 9mm MILD STEEL ROD.
6. SUPPLY TAMPER PROOF NUTS TO U-BOLT.
7. ALTERNATIVE BRACKET AS PER DTMR DRAWING TC9472 MAY BE USED.
8. ALL DIMENSIONS IN MILLIMETRES (U.N.O.).

THE PURPOSE OF THIS STANDARD DRAWING IS TO PROVIDE TYPICAL DETAILS THAT SUPPORT THE DESIRED OUTCOMES OF THE BRISBANE CITY PLAN 2014 AND ASSOCIATED PLANNING SCHEME POLICIES. THE FITNESS FOR PURPOSE OF THIS STANDARD DRAWING FOR A SPECIFIC PROJECT SHOULD BE ASSESSED AND ACCEPTED BY AN APPROPRIATELY QUALIFIED DESIGNER AND/OR REGISTERED PROFESSIONAL ENGINEER OF QUEENSLAND (RPEQ).



BRISBANE CITY COUNCIL STANDARD DRAWING

**SCHOOL CROSSING
POST, FLAG
AND BRACKET**

PUBLISH DATE		JUN 2023
SCALE		NOT TO SCALE
DRAWING NUMBER		BSD-5251
ORIGINAL SIZE	REVISION	
A3	C	