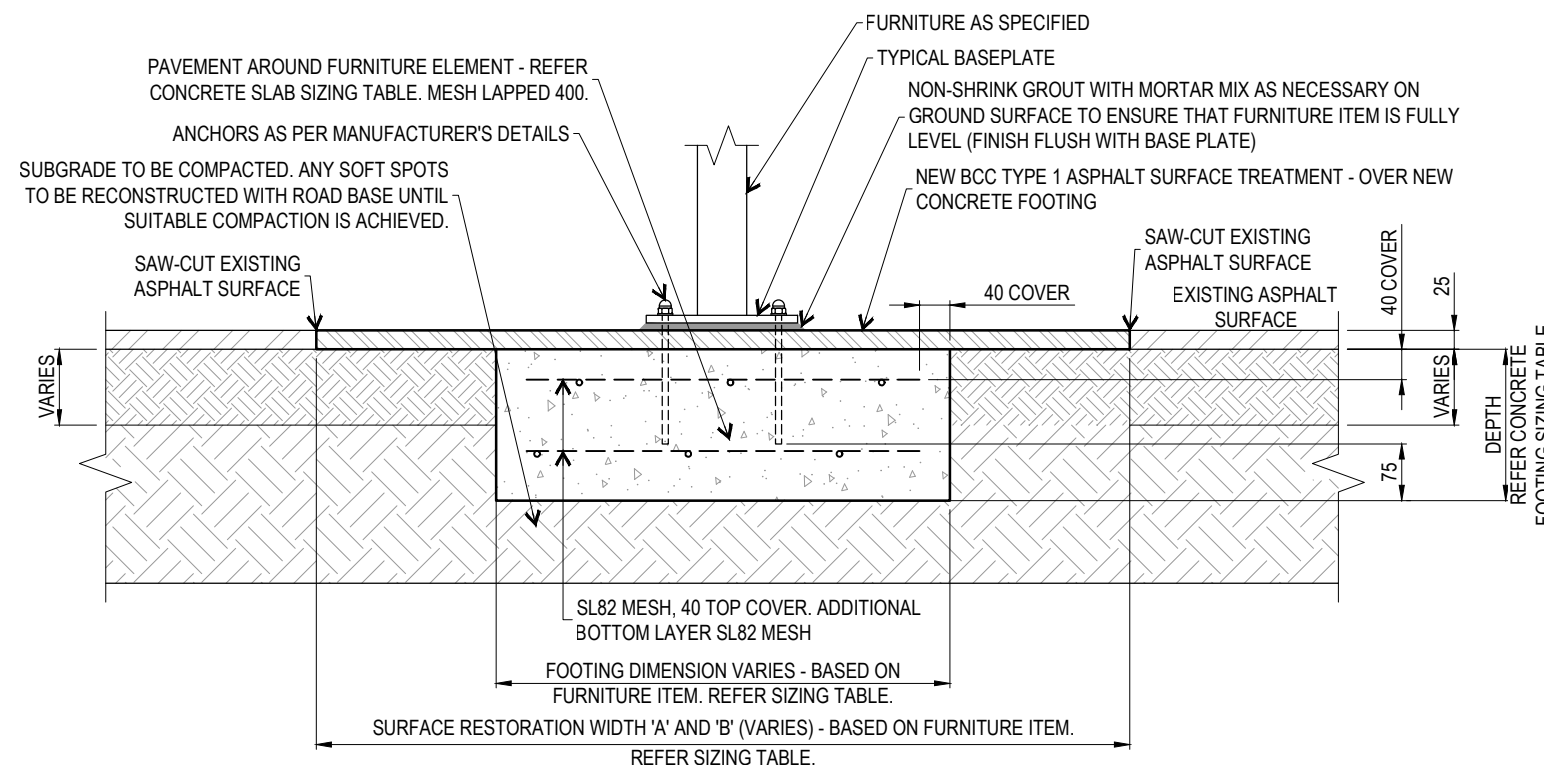
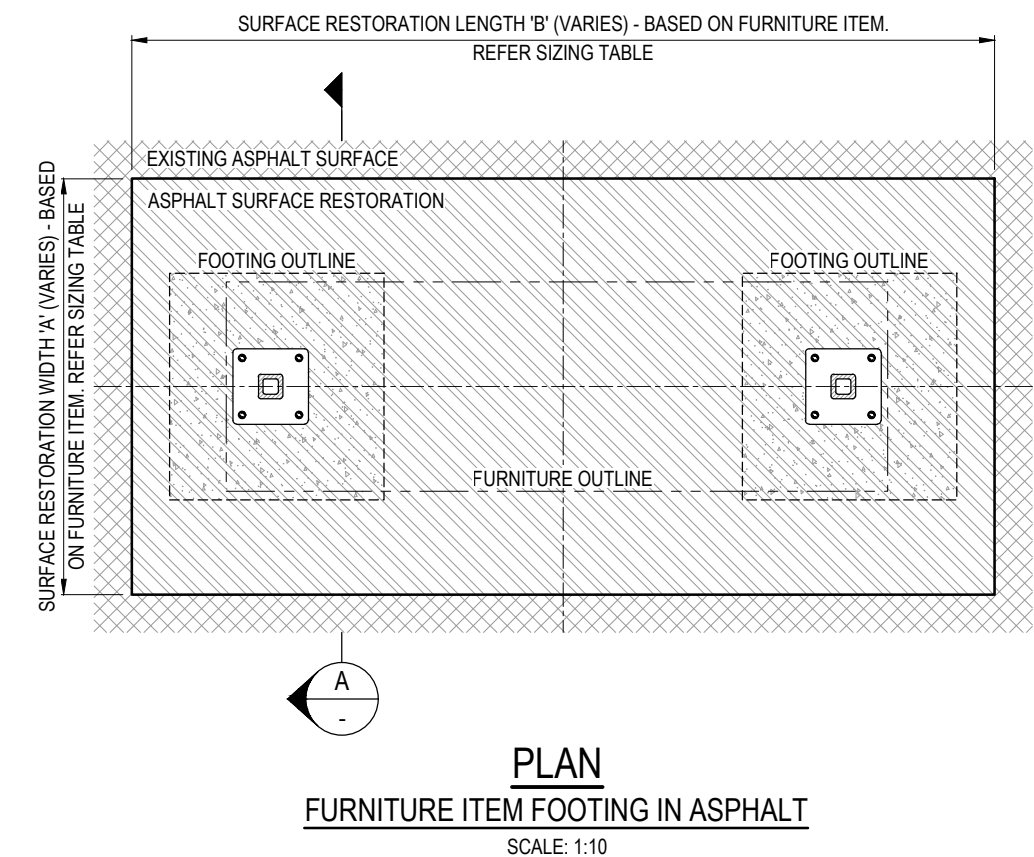


## NEW CONCRETE SLAB SIZING TABLE FOR STREETScape AND PUBLIC FURNITURE ITEMS - MINIMUM REQUIREMENTS

FURNITURE ITEM TYPE (BSD NUMBER)	CONCRETE STRENGTH AND GRADE	SLAB EXTENT AROUND FIXING POINTS	REINFORCEMENT REQUIREMENTS	SURFACE RESTORATION WIDTH 'A' (MIN.)	SURFACE RESTORATION LENGTH 'B' (MIN.)
SINGLE BIKE RACK (BSD-5051)	N32	FOOTING: 600 x 600 x 200 (DEPTH)	SL82	600	1100
MULTI-BIKE RACK (BSD-5052) - 3 BAY	N32	FOOTING: 600 x 600 x 200 (DEPTH)	SL82	600	1500
MULTI-BIKE RACK (BSD-5052) - 4 BAY	N32	FOOTING: 600 x 600 x 200 (DEPTH)	SL82	600	1800
MULTI-BIKE RACK (BSD-5052) - 5 BAY	N32	FOOTING: 600 x 600 x 200 (DEPTH)	SL82	600	2100
STREETSCAPE FIXED BOLLARD (BSD-7095)	N32	FOOTING: 600 x 600 x 300 (DEPTH)	-	600	600
STANDARD SEAT (BSD-7201)	N32	FOOTING: 600 x 600 x 200 (DEPTH)	SL82	1000	2150
PUBLIC TRANSPORT SEAT (BSD-7202)	N32	FOOTING: 600 x 600 x 200 (DEPTH)	SL82	1050	2050
ANODISED 240L BIN UNIT DESIGN (BSD-7302)	N32	-	SL82	1110	1250
DRINKING FOUNTAIN (BSD-7331)	N32	FOOTING: 600 x 600 x 300 (DEPTH)	-	600	1020
BENCH (BSD-7203)	N32	FOOTING: 600 x 600 x 300 (DEPTH)	SL82	600	2050

## CONCRETE WORK NOTES

- ALL WORKMANSHIP AND MATERIAL SHALL BE IN ACCORDANCE WITH AS3600.
- FOOTINGS HAVE BEEN DESIGNED FOR AN ALLOWABLE BEARING PRESSURE OF 100 kPa.
- IF ANCHORING TO AN EXISTING CONCRETE SLAB, ENSURE SLAB IS MINIMUM 125 THICK AND MINIMUM SIZE OF 1965 x 800.
- WHERE SLAB ADJOINS A CONCRETE PATH, A DOWELLED EXPANSION JOINT (AS PER BSD-5206) SHALL BE INSTALLED BETWEEN THE TWO INTERFACES.
- DETAIL ASSUMES EXISTENCE OF EXISTING SLAB UNDER EXISTING SURFACE TREATMENT, IF NO SLAB EXISTS, A NEW SLAB IS TO BE CONSTRUCTED UNDER FURNITURE ITEM AS PER SIZING TABLE ON THIS SHEET FOR SPECIFIC FURNITURE ITEM.
  - CENTRE OF FURNITURE ITEM IS TO BE A MINIMUM OF 200 AWAY FROM EDGE OF SLAB AND IN ANY DIRECTION.
  - IF SOFT UNCONSOLIDATED GROUND IS DISCOVERED AT FOUNDING LEVEL, SEEK SUPERINTENDENT'S DIRECTION BEFORE OVER EXCAVATING OR BACKFILLING WITH CONTROLLED FILL CLASS 2 MATERIAL AND COMPACT.
  - ALL IN GROUND SERVICES SHALL BE IDENTIFIED BY CONTRACTOR, IF SERVICES ARE FOUND AT LOCATION OF FOOTING, CONTACT SUPERINTENDENT.
- ALL DIMENSIONS IN MILLIMETRES (U.N.O.).



### NOTE:

TYPICAL SURFACE MOUNTING (FLANGE MOUNTING) TO NEW CONCRETE FOOTING UNDER ASPHALT SURFACE: SUITABLE FOR MOST STREETSCAPE AND PUBLIC FURNITURE ITEMS AS PER THE SIZING TABLE.

THE PURPOSE OF THIS STANDARD DRAWING IS TO PROVIDE TYPICAL DETAILS THAT SUPPORT THE DESIRED OUTCOMES OF THE BRISBANE CITY PLAN 2014 AND ASSOCIATED PLANNING SCHEME POLICIES. THE FITNESS FOR PURPOSE OF THIS STANDARD DRAWING FOR A SPECIFIC PROJECT SHOULD BE ASSESSED AND ACCEPTED BY AN APPROPRIATELY QUALIFIED DESIGNER AND/OR REGISTERED PROFESSIONAL ENGINEER OF QUEENSLAND (RPEQ).



BRISBANE CITY COUNCIL STANDARD DRAWING

FOOTING DETAILS FOR  
STREETSCAPE AND PUBLIC  
FURNITURE ITEMS

PUBLISH DATE		JUN 2023
SCALE		AS SHOWN
DRAWING NUMBER		BSD-7205
ORIGINAL SIZE	REVISION	
A3	B	