

STANDARDS

DESIGNED IN ACCORDANCE WITH, AND FABRICATION TO MEET THE FOLLOWING STANDARDS:

1. AS1428.4.1:2009, TACTILE GROUND SURFACE INDICATORS FOR THE ORIENTATION OF PEOPLE WITH VISION IMPAIRMENT.
2. AS1627.4 METAL FINISHING – PREPARATION AND PRE-TREATMENT OF SURFACES – ABRASIVE BLAST CLEANING OF STEEL.
3. AS2312:2002/AMDT 1:2004, GUIDE TO PROTECTION OF IRON AND STEEL AGAINST EXTERIOR ATMOSPHERIC CORROSION, 1994.
4. GUIDE TO ENGINEERING PRACTICE, 'PEDESTRIANS', PART 13, AUSTRROADS.
5. AUSTRALIAN ROAD RULES , 1999, WWW.NRTC.GOV.AU
6. AS4506 –2005, METAL FINISHING– THERMOSET POWDER COATINGS.
7. AS4680:2006, HOT DIP GALVANISING.
8. AS1742.9–2000, MANUAL OF UNIFORM TRAFFIC CONTROL DEVICES, 'BICYCLE FACILITIES', GUIDE TO ENGINEERING PRACTICE, 'BICYCLES', PART 14, AUSTRROADS.
9. AUSTRALIAN ROAD RULES , 1999, WWW.NRTC.GOV.AU
10. AS2890.3–1993 PARKING FACILITIES PART 3
11. AS 1742.9– 2000 MANUAL OF UNIFORM TRAFFIC CONTROL DEVICES PART 9: BIKE FACILITIES

NOTES

1. WELDING TO BE ACCORDANCE TO AS1554.1 CAT GP WELDING, ALL SHARP EDGES & BURRS REMOVED.
2. PART SHOULD BE SUPPLIED CLEAN AND FREE FROM MARKS, BURRS, SCUFFS, DISTORTION AND WARPAGE.
3. ENSURE ANTI-SEIZE IS ON ALL NUTS AND BOLTS PRIOR TO ASSEMBLY.
4. DRAWING TO AS1100 DRAWING STANDARDS.
5. 316 S.S AND 316 S.S FASTENERS TO BE USED THROUGHOUT FOR COASTAL INSTALLATIONS OR ANY ENVIRONMENT WITH HIGH CORROSION.
6. ALL TOLERANCES $\pm 1.5\text{mm}$ UNLESS OTHERWISE SPECIFIED.

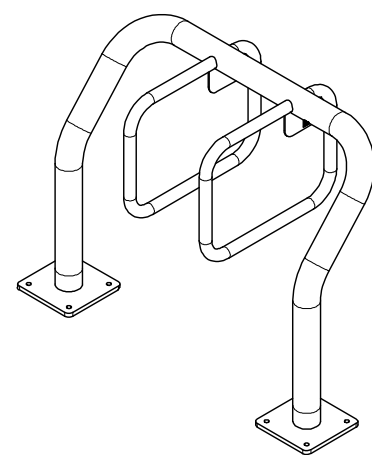
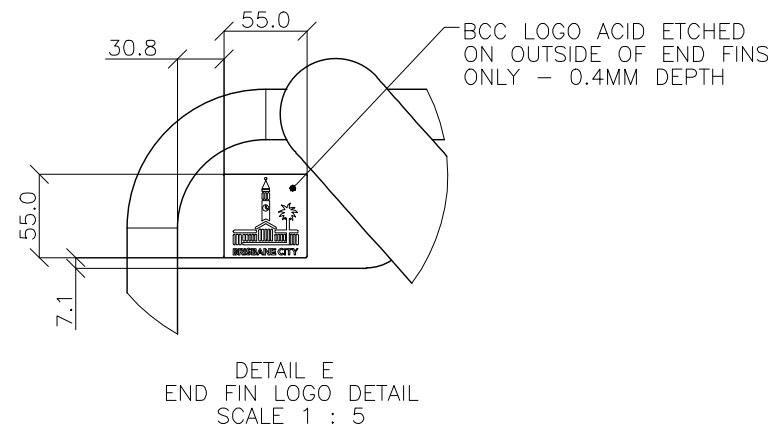
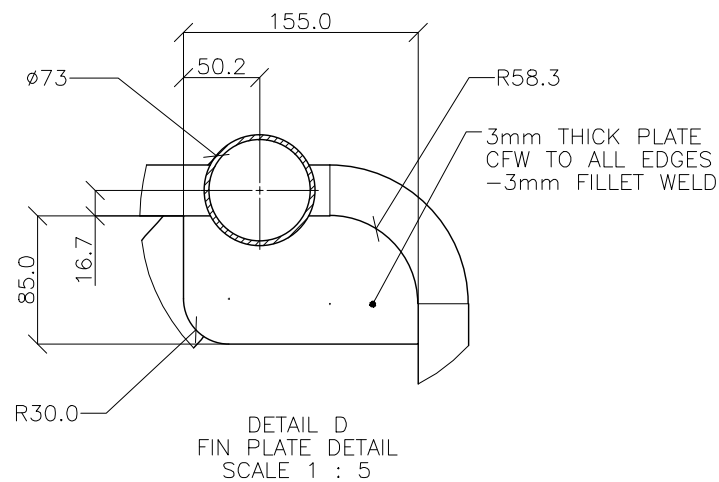
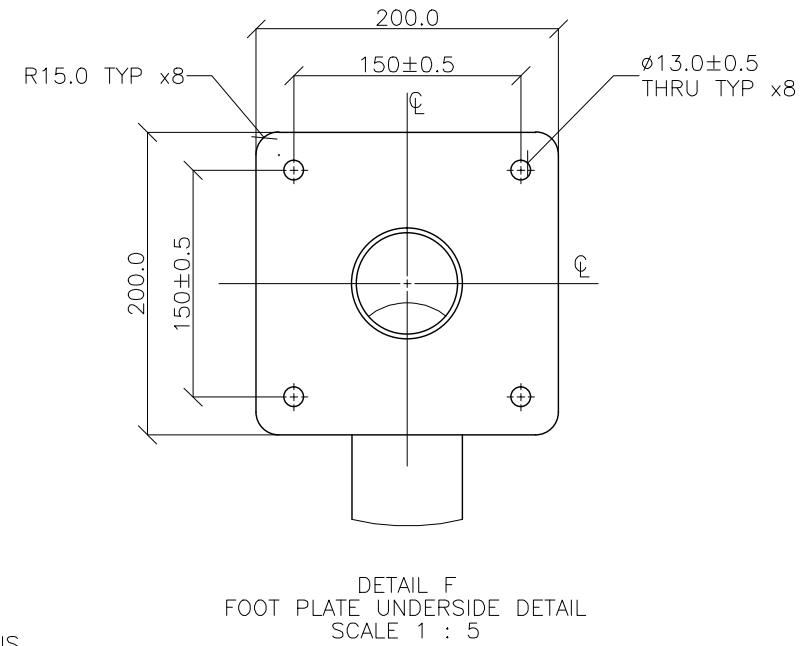
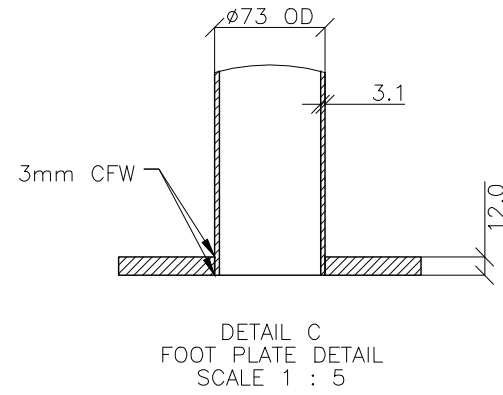
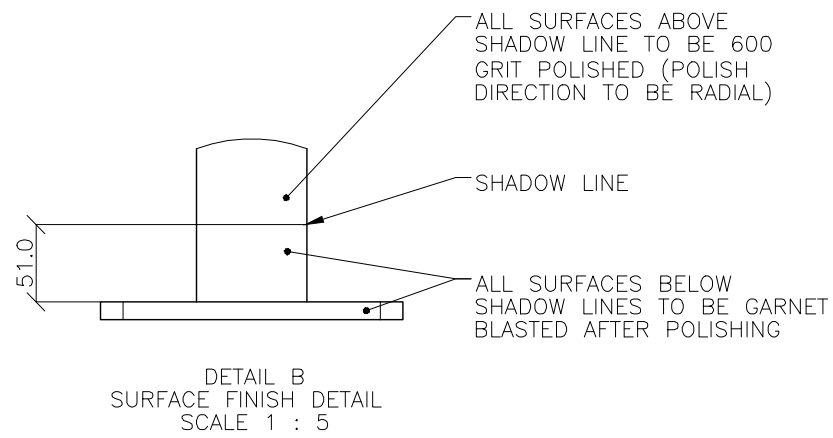
MATERIAL

1. MATERIAL: 316 STAINLESS STEEL
2. COLOUR: NATURAL
3. FINISH: 600 GRIT POLISHED / GARNET BLASTED

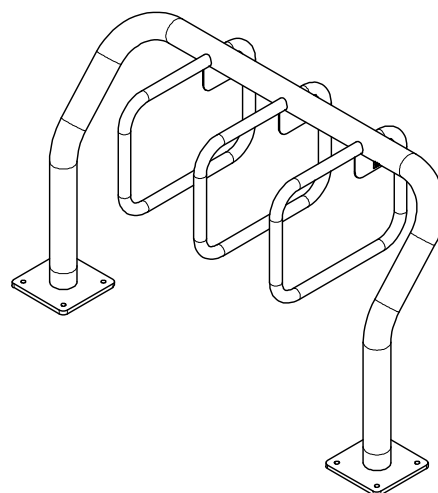
STRUCTURAL DESIGN REVIEWED AND CERTIFIED FOR ISSUE

NAME: B.C. PLANT RPEQ: 8807

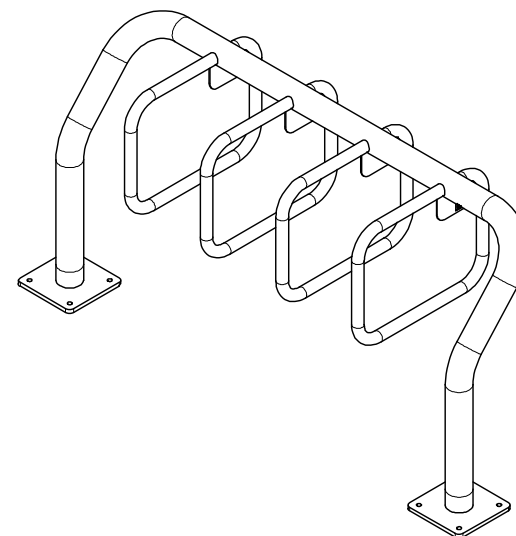
SIGNATURE: ON ORIGINAL DATE: 28/6/12



3 BAY BIKE RACK
PICTORIAL VIEW



4 BAY BIKE RACK
PICTORIAL VIEW



5 BAY BIKE RACK
PICTORIAL VIEW

ISSUE	AMENDMENT	DRAWN DATE	CHK'D DATE	APPR'D DATE
B	Drawing Title Amended	JAN '16	JUL '16	JUL '16
A	Drawing Converted from UMS Series April 2014	APR '14	APR '14	APR '14

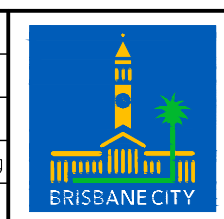
DRAWING AUTHORISED FOR PUBLICATION
INGA CONDRIE AUTHORISED 15/04/2014

ASSET ENGINEERING MANAGER
STRATEGIC ASSET MANAGEMENT
DESIGN APPROVED

VICKI MARTIN SIGNATURE ON ORIGINAL

PRINCIPAL PLANNING OFFICER
URBAN DESIGN

DESIGN	Std Dwgs WG	DATE	June '12
DRAWN	CPD - P&D	DATE	June '12
CHECKED	V.M	DATE	April '13
DRAWING FILENAME	BSD-5052 (B) Multi bike rack - Details - Sheet 2 of 3.dwg		
ASSOCIATED PLANS	SUPERSEDES UMS-566-4		



BRISBANE CITY COUNCIL STANDARD DRAWING

MULTI BIKE RACK DETAILS SHEET 2 OF 3

SCALE: NOT TO SCALE

DWG No: **BSD-5052**

ORIGINAL SIZE: A3 REVISION: B