

STANDARDS

DESIGNED IN ACCORDANCE WITH, AND FABRICATION TO MEET THE FOLLOWING STANDARDS:

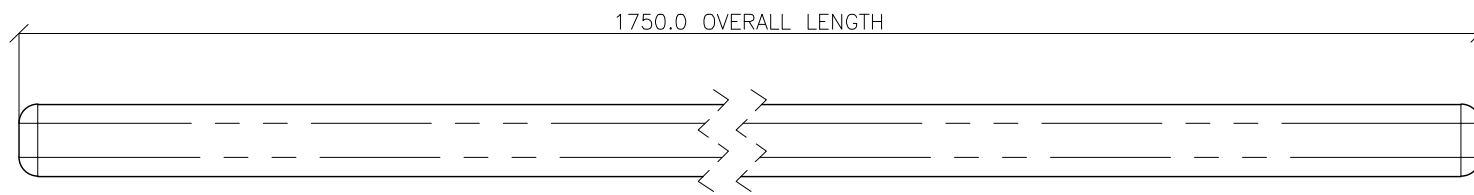
- PARTIALLY COMPLIANT WITH AS1428.2:1992, CLAUSE 27.2 SEATING IN PEDESTRIAN AREAS.
- AS1627.4 METAL FINISHING – PREPARATION AND PRE-TREATMENT OF SURFACES – ABRASIVE BLAST CLEANING OF STEEL.
- AS2312:2002/AMDT 1:2004, GUIDE TO PROTECTION OF IRON AND STEEL AGAINST EXTERIOR ATMOSPHERIC CORROSION, 1994.
- GUIDE TO ENGINEERING PRACTICE, 'PEDESTRIANS', PART 13, AUSTRROADS.
- AS2796.3:1999, TIMBER FOR FURNITURE COMPONENTS.
- AS1604.1-2005, SPECIFICATION FOR PRESERVATIVE TREATMENT, SAWN AND ROUND TIMBER.
- AS4506 –2005, METAL FINISHING– THERMOSET POWDER COATINGS.
- AS4680:2006, HOT DIP GALVANISING. POWDERCOATING TO BE IN ACCORDANCE TO AS4506-2005 EXTERNAL EXPOSURE STANDARD WITH PRE-TREATMENT SAND BLAST, ZINC PHOSPHATE, ETC.
- WOOD TREATMENT – IN ACCORDANCE WITH AS1604.1 HAZARD CLASSIFICATION H3 (EXTERIOR ABOVE GROUND) AND AS2796.3 (TIMBER FOR FURNITURE COMPONENTS.)

NOTES

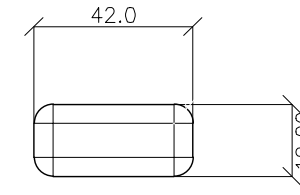
- WELDING TO BE ACCORDANCE TO AS1554.1 CAT GP WELDING, ALL SHARP EDGES & BURRS REMOVED.
- PART SHOULD BE SUPPLIED CLEAN AND FREE FROM MARKS, BURRS, SCUFFS, DISTORTION AND WARPAGE.
- ENSURE ANTI-SEIZE IS ON ALL NUTS AND BOLTS PRIOR TO ASSEMBLY.
- DRAWING TO AS1100 DRAWING STANDARDS.
- 316 S.S AND 316 S.S FASTENERS TO BE USED THROUGHOUT FOR COASTAL INSTALLATIONS OR ANY ENVIRONMENT WITH HIGH CORROSION.
- ALL TOLERANCES $\pm 1.5\text{mm}$ UNLESS OTHERWISE SPECIFIED.
- SEAT LONG SLAT IS THE SAME PART AS BENCH LONG SLAT (REFER TO DRAWING BSD-7201)
- SEAT SHORT SLAT IS THE SAME PART AS BENCH SHORT SLAT (REFER TO DRAWING BSD-7201)
- SEAT ARM REST SLAT IS THE SAME PART AS BENCH ARM REST SLAT (REFER TO DRAWING BSD-7201)

MATERIAL

- MATERIAL: HARDWOOD
- COLOUR: JARRAH STAIN
- FINISH: SMOOTH + WATER BASED FURNITURE OIL

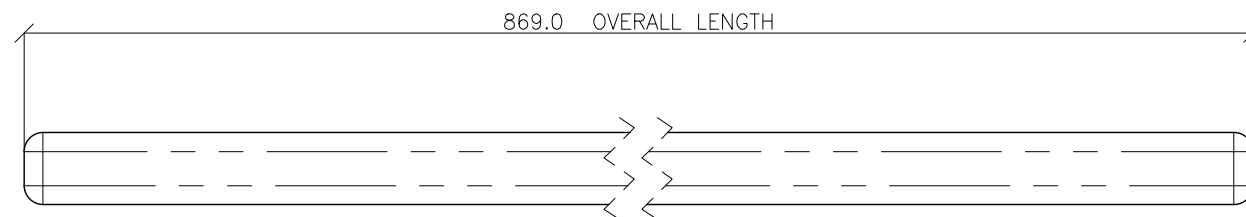


FRONT VIEW

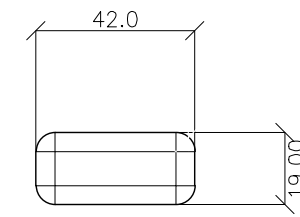


SIDE VIEW

STANDARD SEAT LONG SLAT

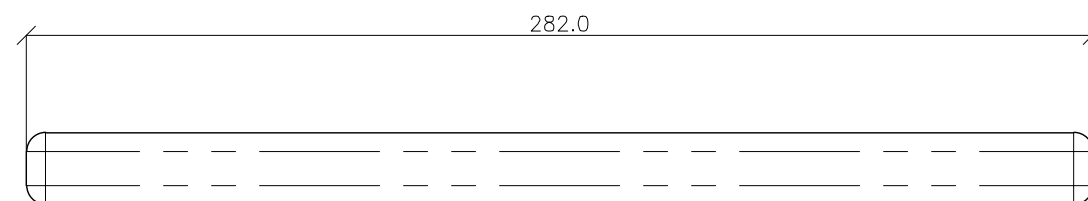


FRONT VIEW

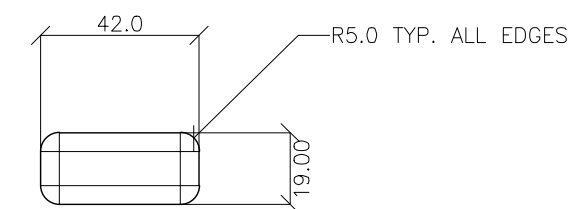


SIDE VIEW

STANDARD SEAT SHORT SLAT



FRONT VIEW




SIDE VIEW

STANDARD SEAT ARM REST SLAT

STRUCTURAL DESIGN REVIEWED AND CERTIFIED FOR ISSUE

NAME: B.C. PLANT _____ RPEQ: 8807

SIGNATURE: ON ORIGINAL _____ DATE: 28/6/12

				DRAWING AUTHORISED FOR PUBLICATION INGA CONDRIK AUTHORISED 15/04/2014				DESIGN	FORMZOO DESIGN	DATE	JUN '12		BRISBANE CITY COUNCIL STANDARD DRAWING	
				ASSET ENGINEERING MANAGER STRATEGIC ASSET MANAGEMENT				DRAWN	AB	DATE	JUN '12			
				DESIGN APPROVED				CHECKED	VM	DATE	APR '13		DWC No. BSD-7201	
				VICKI MARTIN SIGNATURE ON ORIGINAL				DRAWING FILENAME	BSD-7201(B) Standard seat - Timber slats - Sheet 8 of 10.dwg				ORIGINAL SIZE	
B	Drawing Title Amended	FEB '16	JUL '16	JUL '16	PRINCIPAL PLANNING OFFICER URBAN DESIGN				ASSOCIATED PLANS	SUPERSEDES UMS-563-8			REVISION	
A	Drawing Converted from UMS Series April 2014	APR '14	APR '14	APR '14								A3	B	
ISSUE	AMENDMENT	DRAWN DATE	CHK'D DATE	APPR'D DATE										