

# STANDARDS

DESIGNED IN ACCORDANCE WITH, AND FABRICATION TO MEET THE FOLLOWING STANDARDS:

- AS1627.4 METAL FINISHING – PREPARATION AND PRE-TREATMENT OF SURFACES – ABRASIVE BLAST CLEANING OF STEEL.
- AS2312:2002/AMDT 1:2004, GUIDE TO PROTECTION OF IRON AND STEEL AGAINST EXTERIOR ATMOSPHERIC CORROSION, 1994.
- GUIDE TO ENGINEERING PRACTICE, 'PEDESTRIANS', PART 13, AUSTRROADS.
- AS2796.3:1999, TIMBER FOR FURNITURE COMPONENTS.
- AS1604.1-2005, SPECIFICATION FOR PRESERVATIVE TREATMENT, SAWN AND ROUND TIMBER.
- AS4506 –2005, METAL FINISHING– THERMOSET POWDER COATINGS.
- AS4680:2006, HOT DIP GALVANISING. POWDERCOATING TO BE IN ACCORDANCE TO AS4506-2005 EXTERNAL EXPOSURE STANDARD WITH PRE-TREATMENT SAND BLAST, ZINC PHOSPHATE, ETC.
- WOOD TREATMENT – IN ACCORDANCE WITH AS1604.1 HAZARD CLASSIFICATION H3 (EXTERIOR ABOVE GROUND) AND AS2796.3 (TIMBER FOR FURNITURE COMPONENTS.)

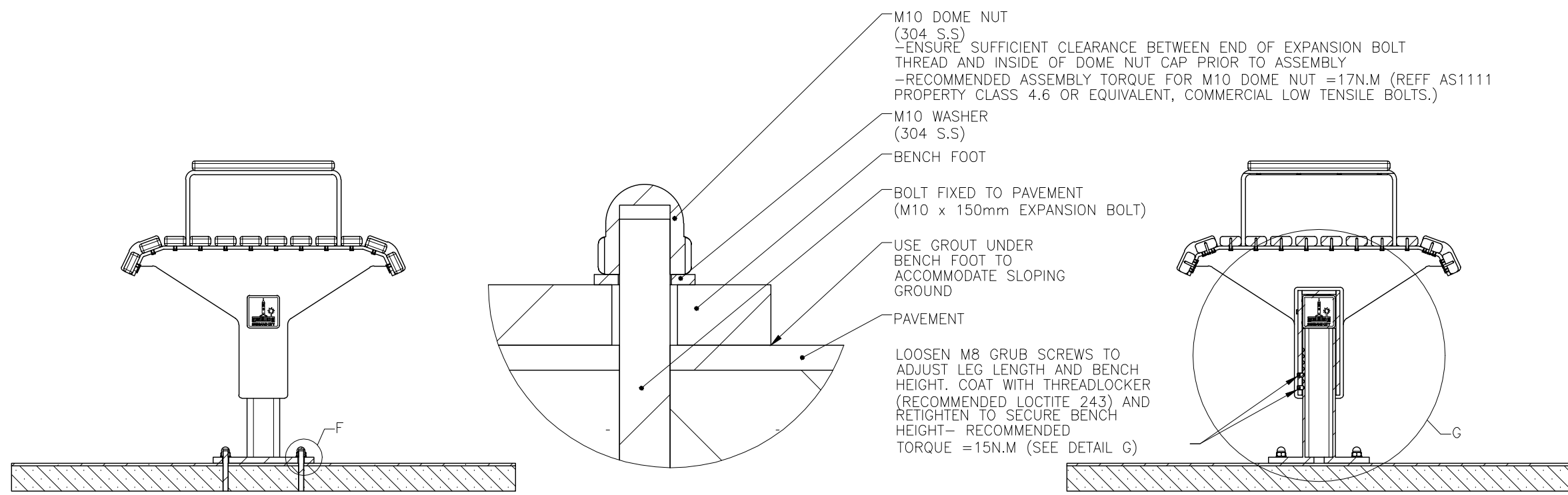
# NOTES

- WELDING TO BE ACCORDANCE TO AS1554.1 CAT GP WELDING, ALL SHARP EDGES & BURRS REMOVED.
- PART SHOULD BE SUPPLIED CLEAN AND FREE FROM MARKS, BURRS, SCUFFS, DISTORTION AND WARPAGE.
- ENSURE ANTI-SEIZE IS ON ALL NUTS AND BOLTS PRIOR TO ASSEMBLY.
- DRAWING TO AS1100 DRAWING STANDARDS.
- 316 S.S AND 316 S.S FASTENERS TO BE USED THROUGHOUT FOR COASTAL INSTALLATIONS OR ANY ENVIRONMENT WITH HIGH CORROSION.
- ALL TOLERANCES ± 1.5mm UNLESS OTHERWISE SPECIFIED.

# MATERIAL

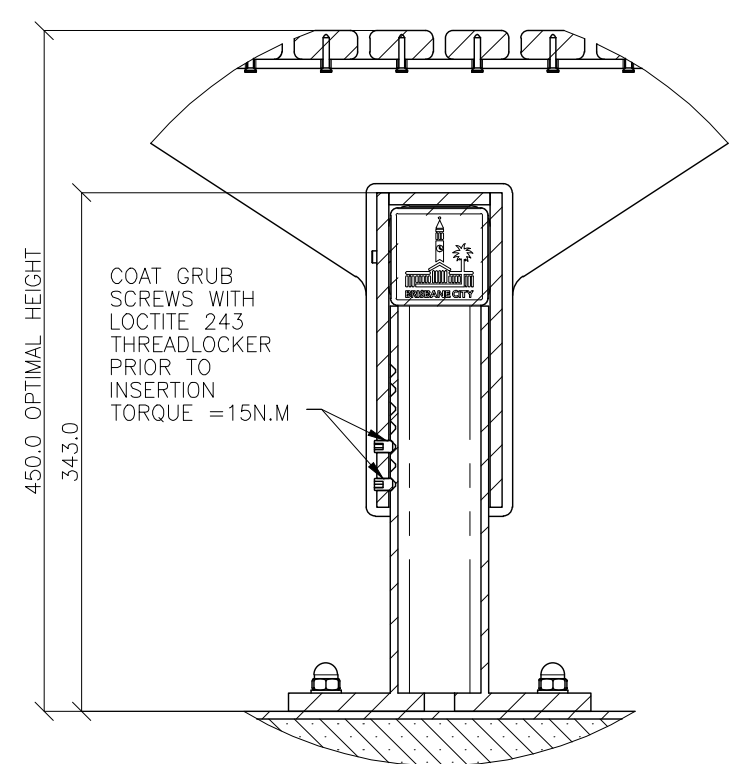
- MATERIAL: SEE COMPONENT DRAWING
- COLOUR: SEE COMPONENT DRAWING
- FINISH: SEE COMPONENT DRAWING

**STRUCTURAL DESIGN REVIEWED AND CERTIFIED FOR ISSUE**  
 NAME: B.C. PLANT RPEQ: 8807  
 SIGNATURE: ON ORIGINAL DATE: 28/ 6 / 12

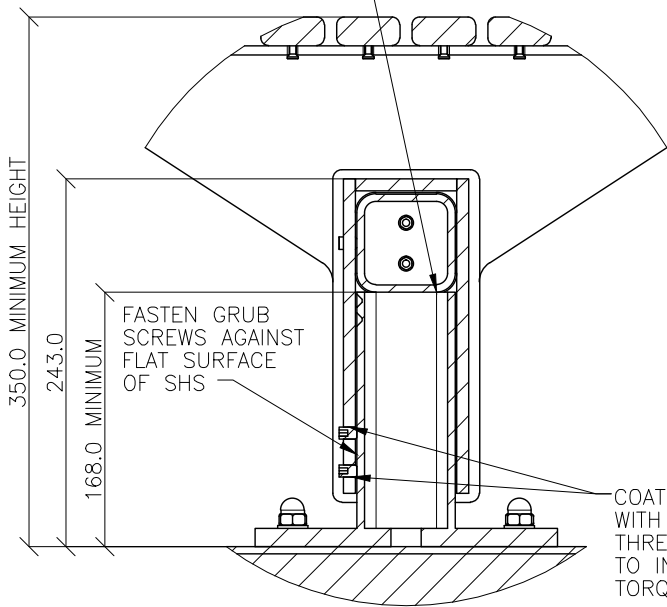


SECTION VIEW OF INSTALLATION

DETAIL F  
INSTALLATION DETAIL  
SCALE 1 : 1

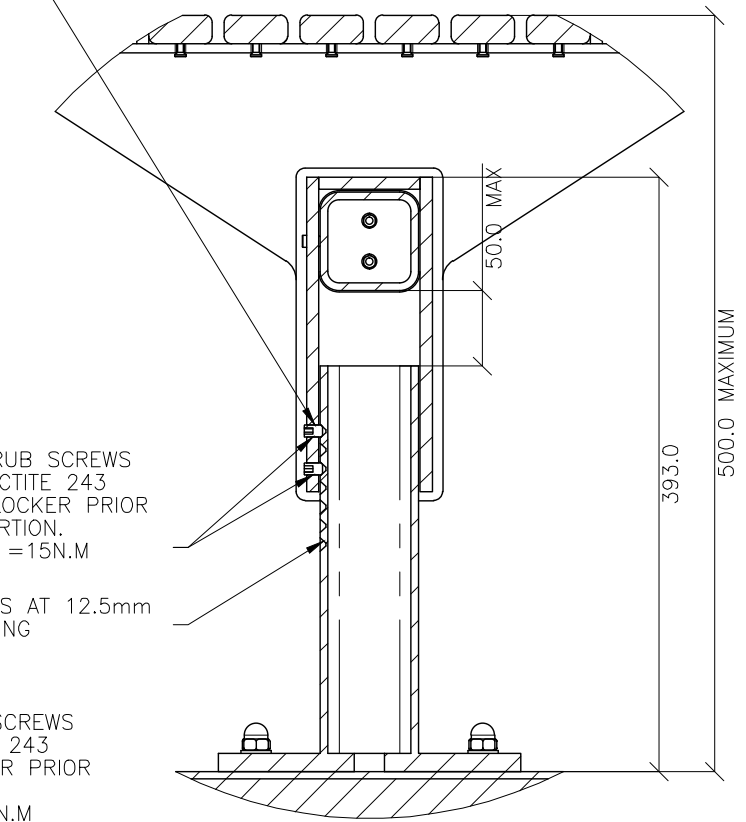


TO LOWER BENCH – CUT BENCH FOOT TO REQUIRED HEIGHT. COAT CUT EDGES OF FOOT WITH COLD GAL PAST prior to RE-ASSEMBLING. ENSURE CONTACT BETWEEN TOP OF FOOT AND BENCH RAIL PRIOR TO TIGHTENING GRUB SCREWS.



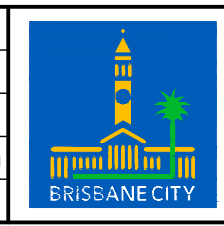
DETAIL G  
HEIGHT ADJUSTMENT DETAIL  
TO ACCOMMODATE SLOPING SURFACES  
SCALE 1 : 5

TO RAISE BENCH – LIFT FRAME TO REQUIRED HEIGHT. POSITION GRUB SCREWS IN LINE WITH THE NEAREST DIVOTS IN THE BENCH FOOT. TIGHTEN GRUB SCREWS ENSURING THEY LOCATE CORRECTLY WITHIN DIVOTS.



B	Drawing Title Amended	FEB '16	JUL '16	JUL '16
A	Drawing Converted from UMS Series April 2014	APR '14	APR '14	APR '14
ISSUE	AMENDMENT	DRAWN DATE	CHK'D DATE	APPR'D DATE

DRAWING AUTHORISED FOR PUBLICATION INGA CONDRIE AUTHORISED 15/04/2014			
DESIGN	FORM200 DESIGN	DATE	JUN '12
DRAWN	AB	DATE	JUN '12
CHECKED	VM	DATE	APR '13
DRAWING FILENAME	BSD-7203 (B) Bench - Installation - Sheet 10 of 10.dwg		
ASSOCIATED PLANS	SUPERSEDES UMS-564-10		
ASSET ENGINEERING MANAGER STRATEGIC ASSET MANAGEMENT DESIGN APPROVED VICKI MARTIN SIGNATURE ON ORIGINAL PRINCIPAL PLANNING OFFICER URBAN DESIGN			



**BRISBANE CITY COUNCIL STANDARD DRAWING**

**BENCH INSTALLATION SHEET 10 OF 10**

SCALE: NOT TO SCALE  
 DWG No: **BSD-7203**  
 ORIGINAL SIZE: A3 REVISION: B