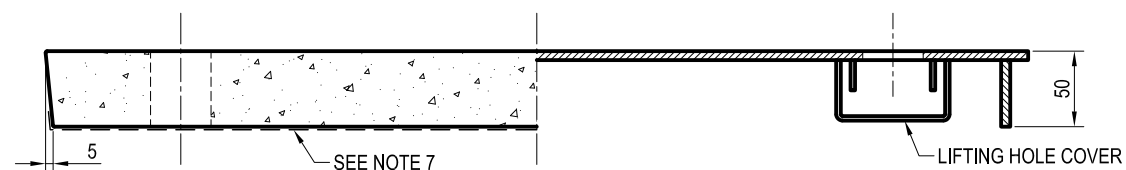


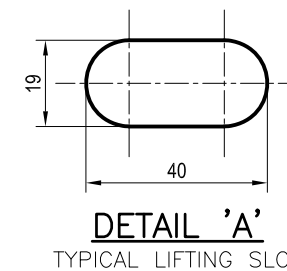
SECTION B-B
TYPICAL CONCRETE LID SECTION

PLAN VIEW

SECTION C-C
TYPICAL STEEL LID SECTION



SECTION A-A
TYPICAL FRONT SECTION



DETAIL 'A'
TYPICAL LIFTING SLOT

PIT TYPE	L2	W3	NO. LIDS REQUIRED
P2	620	250	1
P3	495	270	1
P4	650	345	1
P6	650	495	2
	1315	495	1
P7	460	495	2
	950	495	1
P8	650	495	2
	1315	495	1
P9	640	490	3

TABLE 1
LID DIMENSIONS


LOCATION /ITEM	TRAFFIC SIGNALISED INTERSECTIONS - ORANGE CONDUITS	WHITE CONDUITS BETWEEN SIGNALISED INTERSECTIONS	STREET LIGHTING - ORANGE CONDUITS	ANY OTHER PIT WITH ORANGE CONDUITS	ANY OTHER PIT WITH NO ORANGE CONDUITS
BCC 'TRAFFIC SIGNAL' COVER	X				
BCC 'ELECTRICAL' COVER			X	X	
BCC 'COMMUNICATIONS' COVER		X			X

TABLE 2
LID DESCRIPTION MARKING REQUIREMENTS

NOTES:

1. LOCATION OF PIT DESCRIPTION LETTERING i.e.. "TRAFFIC SIGNAL", "ELECTRICAL" AND "COMMUNICATIONS". TEXT MIN. 35 HIGH FOR ALL COVERS. PIT/LID DESCRIPTION AS PER TABLE 2.
2. COUNCIL OWNED LIDS TO HAVE 100 SQ BCC LOGO OR 50 HIGH 'BCC' LETTERING MARKED AS SHOWN.
3. NON-SLIP FINISH TO BE APPLIED TO TOP SURFACE OF LID.
4. ALL CORNER RADII TO BE 20mm, UNLESS SHOWN OTHERWISE.
5. PIT LID MATERIAL MAY BE, BUT NOT LIMITED TO, GALVANISED STEEL PLATE, CAST OR DUCTILE METAL, CONCRETE, GLASS REINFORCED CONCRETE OR POLYMER CONCRETE. OTHER MATERIALS TO BE APPROVED BY COUNCIL.
6. PIT LID TO BE LOAD RATED TO CLASS 'B' TO AS3996 FOR USE IN GENERAL PEDESTRIAN AREAS. FOR PITS AND LIDS IN LOCALITIES AND CENTRES SUCH AS THE CBD AND CENTRES AS DEFINED BY CHAPTER 5 OF THE INFRASTRUCTURE PLANNING SCHEME POLICY, PIT LIDS ARE TO BE LOAD RATED TO CLASS 'C' TO AS3996.
7. THE LIFTING HOLES SHALL BE DESIGNED TO PREVENT ENTRY OF FOREIGN OBJECTS (FOR EXAMPLE SYRINGES) INTO THE PIT BUT ALLOW SOIL TO PASS THROUGH SO LIFTING IS NOT IMPEDED. THE LIFTING HOLES SHALL BE COMPATIBLE WITH THE STANDARD LIFTING DEVICE.
8. WHERE REQUIREMENTS FOR NOTE 7 CANNOT BE ACHIEVED, INSTALL CORFLUTE ('TELSTRA') GASKET UNDER PIT COVER PROFILE.
9. REFER TO BSD-1011 FOR PIT TYPE DETAILS AND DIMENSIONS.
10. FOR CIRCULAR PIT COVERS, REFER TO DEPARTMENT OF TRANSPORT AND MAIN ROADS DRAWING 1417.
11. ALL DIMENSIONS IN MILLIMETRES (U.N.O.).

THE FITNESS FOR PURPOSE OF THIS STANDARD DRAWING FOR A SPECIFIC PROJECT SHALL BE ASSESSED AND ACCEPTED BY A SUITABLY QUALIFIED REGISTERED PROFESSIONAL ENGINEER OF QUEENSLAND (RPEQ).

	BRISBANE CITY COUNCIL STANDARD DRAWING		PUBLISH DATE	MAR 2021
	CABLE PIT RECTANGULAR TYPE LIDS		SCALE	NOT TO SCALE
			DRAWING NUMBER	BSD-1012
	ORIGINAL SIZE	A3	REVISION	C