

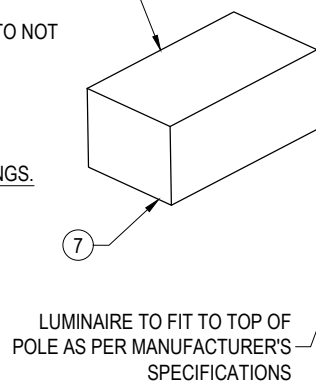
LED LUMINAIRE (INCORPORATING A 7 PIN NEMA RECEPTACLE AND NEMA PE CELL)

MAXIMUM WEIGHT: 8.4kg
 MAXIMUM WIND CATCHING AREA: 0.13m²
 MAXIMUM HEIGHT: 275mm

TOTAL MAXIMUM HEIGHT OF PEDESTRIAN LIGHT POLE AND LUMINAIRE TO NOT EXCEED 5275mm.

FOR NEW INSTALLATIONS REFER TO SHEET 7 (BSD-11005).

THIS LIGHT POLE IS NOT SUITABLE FOR MOUNTING TO EXISTING FOOTINGS.



EQUIPMENT LIST

ITEM NO.	DESCRIPTION	QTY.
1	MAIN SWITCHBOARD AND CONTROL PANEL ARRANGEMENT AND SCHEMATIC (BSD-11001)	1
2	5 METRE LIGHT POLE MAIN BODY	1
3	LIGHT POLE ACCESS HATCH	1
4	LIGHT POLE CURVED LOGO BADGE	1
5	M16 316 STAINLESS STEEL NUT AND WASHER	4
6	M5 316 STAINLESS STEEL HEX NUT	2
7	LED LUMINAIRE (INCORPORATING A 7 PIN NEMA RECEPTACLE AND NEMA PE CELL) REFER TO BRISBANE CITY COUNCIL FOR APPROVED LUMINAIRE DETAILS	1
8	M6 x16mm 316 STAINLESS STEEL BUTTON HEAD TORX SECURITY SCREW	5
9	M6 316 STAINLESS STEEL HEX NUT	1

STANDARDS

DESIGNED IN ACCORDANCE WITH, FABRICATED AND INSTALLED TO MEET THE FOLLOWING STANDARDS:

- AS1428.4.1 - TACTILE GROUND SURFACE INDICATORS FOR THE ORIENTATION OF PEOPLE WITH VISION IMPAIRMENT.
- AUSTROADS GUIDE TO ROAD DESIGN, PART 6B: ROADSIDE ENVIRONMENT.
- AS1158.3.1 - ROAD LIGHTING, PART 3.1: PEDESTRIAN AREA (CATEGORY P) LIGHTING - PERFORMANCE AND INSTALLATION DESIGN REQUIREMENTS.
- AS1627.4 - METAL FINISHING - PREPARATION AND PRE-TREATMENT OF SURFACES - ABRASIVE BLAST CLEANING OF STEEL.
- AS2312/AMDT 1 - GUIDE TO PROTECTION OF IRON AND STEEL AGAINST EXTERIOR ATMOSPHERIC CORROSION.
- AS4680 - HOT DIP GALVANISING.
- AS4506 - METAL FINISHING-THERMOSET POWDER COATINGS.
- AS/NZS3000 - ELECTRICAL INSTALLATIONS

NOTES

PART SHOULD BE SUPPLIED CLEAN AND FREE FROM MARKS, BURRS, SCUFFS, DISTORTION AND WARPAGE.

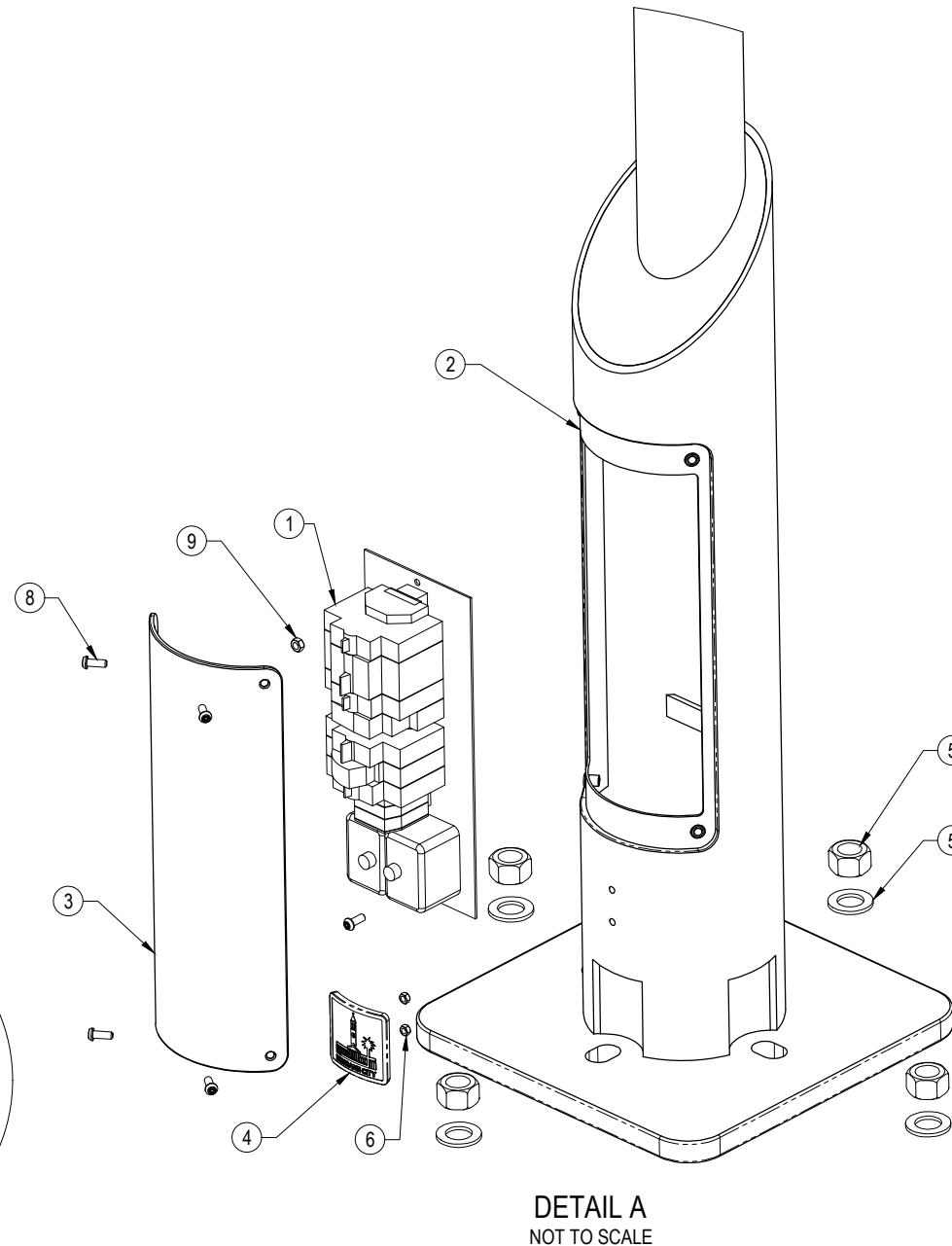
- ALL TOLERANCES $\pm 1.5\text{mm}$ UNLESS OTHERWISE SPECIFIED.
- DRAWING TO AS1100 DRAWING STANDARDS.
- WELDING TO BE IN ACCORDANCE WITH AS1554.1 CAT GP WELDING, ALL SHARP EDGES & BURRS REMOVED.
- POWDER COATING TO BE IN ACCORDANCE TO AS4506 EXTERNAL EXPOSURE STANDARD WITH PRE-TREATMENT SAND BLAST, ZINC PHOSPHATE, ETC.
- ENSURE ANTI-SEIZE IS ON ALL NUTS AND BOLTS PRIOR TO ASSEMBLY.
- 316 S.S. AND 316 S.S. FASTENERS TO BE USED THROUGHOUT FOR COASTAL INSTALLATIONS OR ANY ENVIRONMENT WITH HIGH CORROSION.
- ANY DESIGN AMENDMENTS THAT DIFFER FROM THESE DRAWINGS, INCLUDING LUMINAIRE OR OTHER POLE LOADING REQUIREMENTS WILL REQUIRE CERTIFICATION FROM A SUITABLY QUALIFIED ENGINEER.

MATERIALS

- MATERIAL: SEE COMPONENT DRAWING
- COLOUR:
 LED LUMINAIRE - RAL 7010 TARPULIN GREY OR APPROVED EQUIVALENT.
 LIGHT POLE - DULUX METROPOLIS STORM PEARL OR APPROVED EQUIVALENT.
- FINISH: HOT DIP GALVANISED AND POWDER COATED

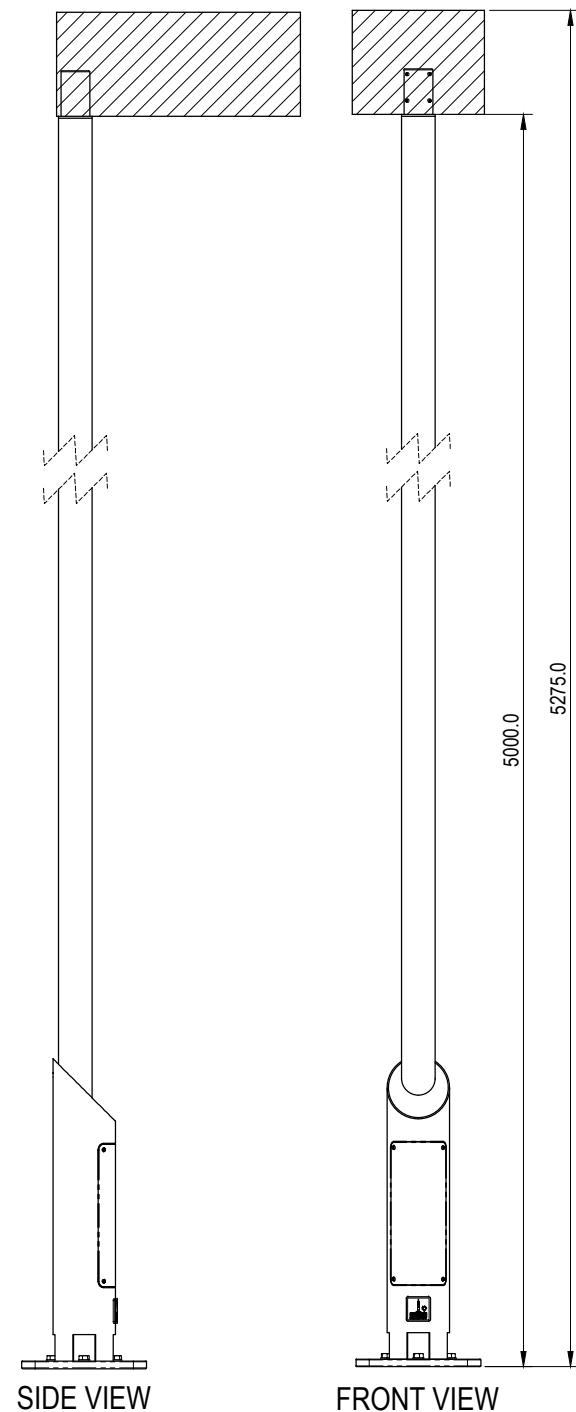
DESIGN NOTES:

- STRUCTURAL ELEMENTS DESIGNED FOR THE FOLLOWING WIND CONDITIONS:
 LOCATION AND WIND: CITY OF BRISBANE. REGION B, ULTIMATE VR: 57 m/s, SERVICEABILITY VR: 39m/s
 COMPONENTS CERTIFIED: MAIN STRUCTURE
- SHOULD CONDITIONS VARY FROM THOSE DESCRIBED, SEEK PROFESSIONAL ENGINEERING ADVICE.
- LED LUMINAIRE, ACCESS HATCH, LOGO BADGE AND MAIN BODY ASSEMBLY AS PER MANUFACTURER'S SPECIFICATIONS.
- ORIGINAL CERTIFICATION SHALL NOT BE CONSTRUED AS RELIEVING ANY OTHER PARTY OR THEIR RESPONSIBILITIES, LIABILITIES OR CONTRACTUAL OBLIGATIONS.



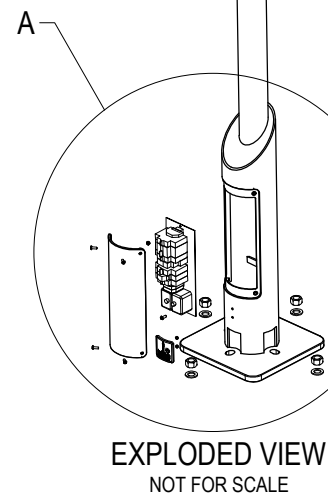
DETAIL A
NOT TO SCALE

THE FITNESS FOR PURPOSE OF THIS STANDARD DRAWING FOR A SPECIFIC PROJECT SHALL BE ASSESSED AND ACCEPTED BY A SUITABLY QUALIFIED REGISTERED PROFESSIONAL ENGINEER OF QUEENSLAND (RPEQ).



SIDE VIEW

FRONT VIEW



EXPLODED VIEW
NOT FOR SCALE



BRISBANE CITY COUNCIL STANDARD DRAWING

5 METRE PEDESTRIAN LIGHT POLE
 MAIN ASSEMBLY
 SHEET 1 OF 7

PUBLISH DATE		March 2021
SCALE		NOT TO SCALE
DRAWING NUMBER		BSD-11005
ORIGINAL SIZE	REVISION	
A3	A	