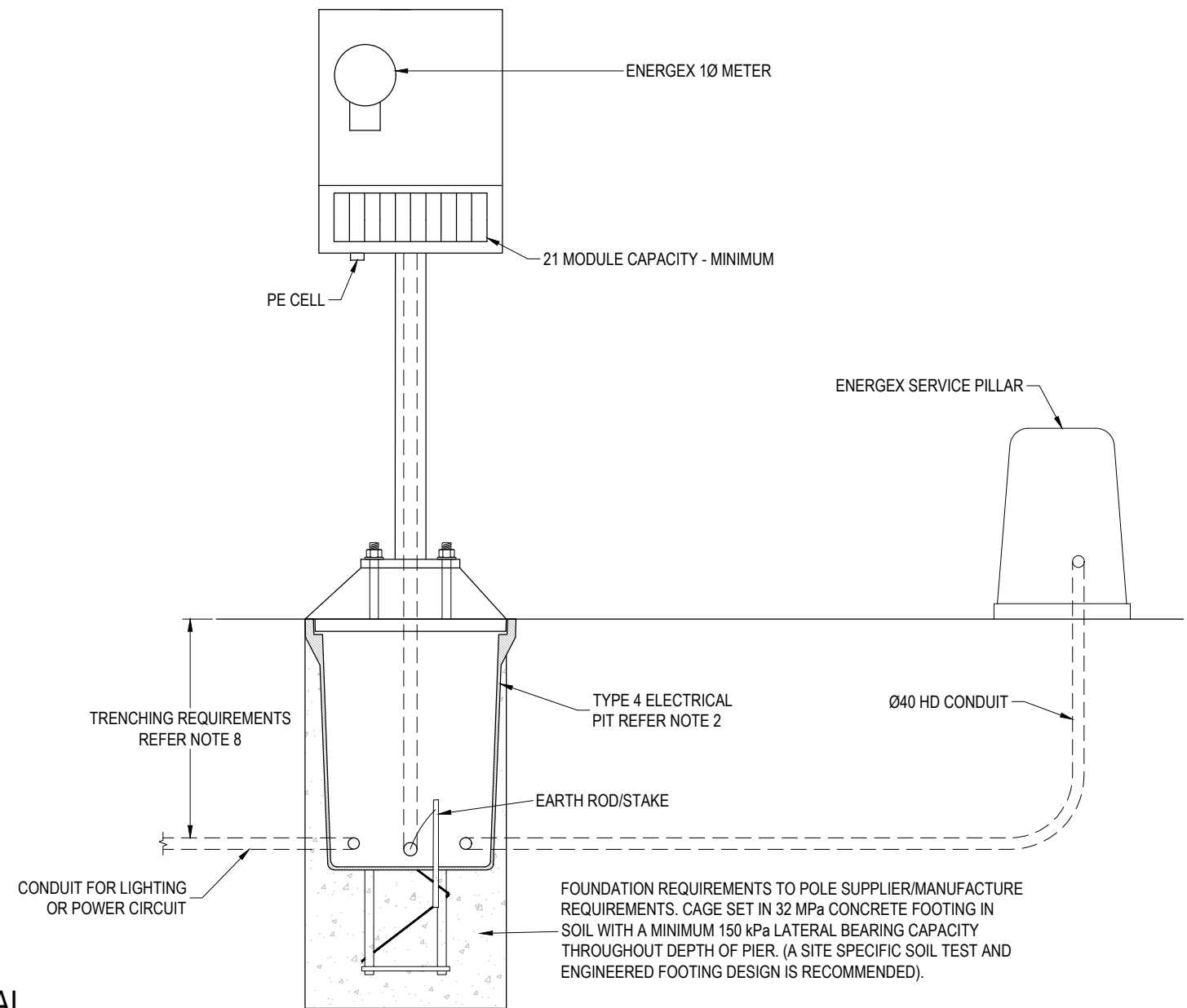


SIDE VIEW SECTION



FRONT VIEW SECTION


MSB SWITCHBOARD & ELECTRICAL PIT/CONDUIT DETAIL

SCALE: N.T.S.

NOTES:

1. ELECTRICAL INSTALLATION SHALL COMPLY WITH AS/NZS3000 (WIRING RULES).
2. TYPE 4 ELECTRICAL PIT WITH CONCRETE LID TO BE INSTALLED AT THE BASE OF THE SWITCHBOARD. FOR TYPE 4 ELECTRICAL PIT REFER TO BSD-1011 & BSD-1012. PIT LID TO BE LOAD RATED TO MINIMUM CLASS 'B' TO AS3996 .
3. THE ELECTRICAL CONDUIT TO BE INSTALLED INTERNALLY THROUGH THE STEEL POLE AND THEN UNDERGROUND TO TYPE 4 ELECTRICAL PIT.
4. CONTACT GM POLES TO FABRICATE POST TOP GALVANISED BRACKET - QUOTING PROJECT ID: 108670 or APPROVED EQUAL CAN BE FABRICATED.
5. SEAL END OF CONDUITS WITH SILICON OR SIMILAR SUITABLE SEALANT TO PREVENT INGRESS OF VERMIN.
6. SEAL EXTERNAL BASE OF POLES WITH MORTAR OR SIMILAR SUITABLE MATERIAL TO PREVENT INGRESS OF VERMIN. NON-SHRINK GROUT PLACED FLUSH WITH THE UNDERSIDE OF THE BASE PLATE & TAPER AWAY FROM POLE AT APPROXIMATELY 45°. A MINIMUM 12mm WEEP HOLE IS RECOMMENDED TO ALLOW FOR DRAINAGE OF CONDENSATION FROM INSIDE POLE.
7. ALL DIMENSIONS IN SHOWN ARE INDICATIVE ONLY.
8. FOR TRENCH DEPTHS/TRENCHING REQUIREMENTS REFER TO BSD-4015 AND S145 INSTALLATION AND MAINTENANCE OF UTILITY SERVICES.
9. ALL FIXINGS AND SUPPORTS TO BE GALVANIZED.

THE FITNESS FOR PURPOSE OF THIS STANDARD DRAWING FOR A SPECIFIC PROJECT SHALL BE ASSESSED AND ACCEPTED BY A SUITABLY QUALIFIED REGISTERED PROFESSIONAL ENGINEER OF QUEENSLAND (RPEQ).

	BRISBANE CITY COUNCIL STANDARD DRAWING		PUBLISH DATE March 2021	
	PARKS MAIN SWITCHBOARD UNDERGROUND SUPPLY - INSTALLATION SHEET 2 OF 4		SCALE NOT TO SCALE	
			DRAWING NUMBER BSD-11101	
	ORIGINAL SIZE A3	REVISION A		