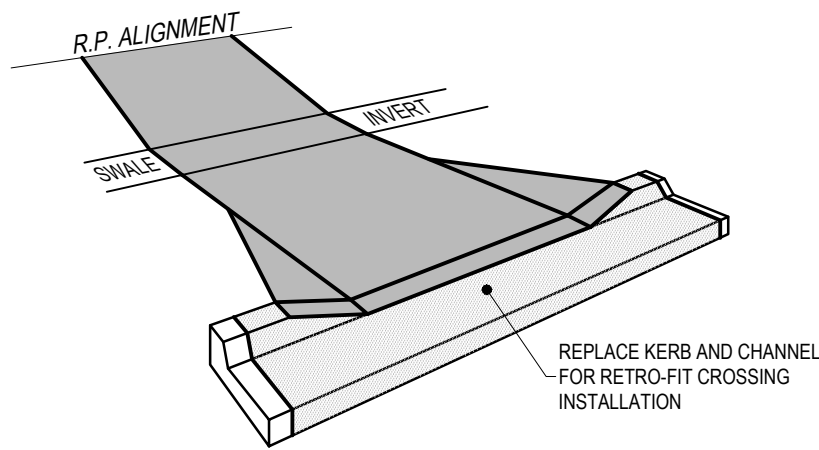
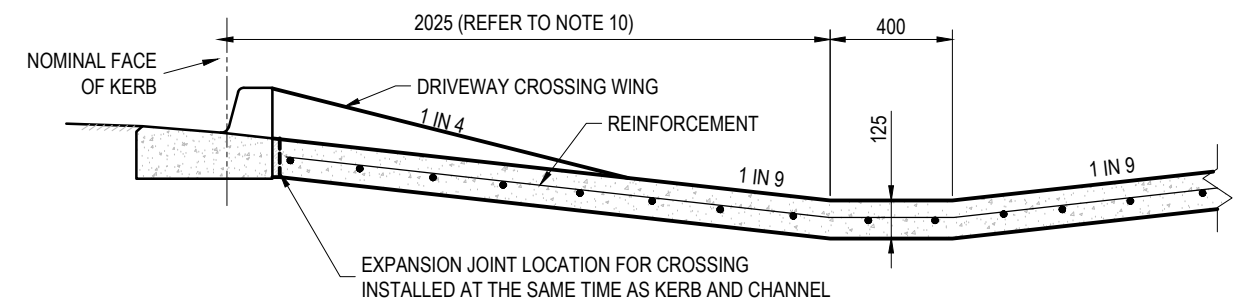


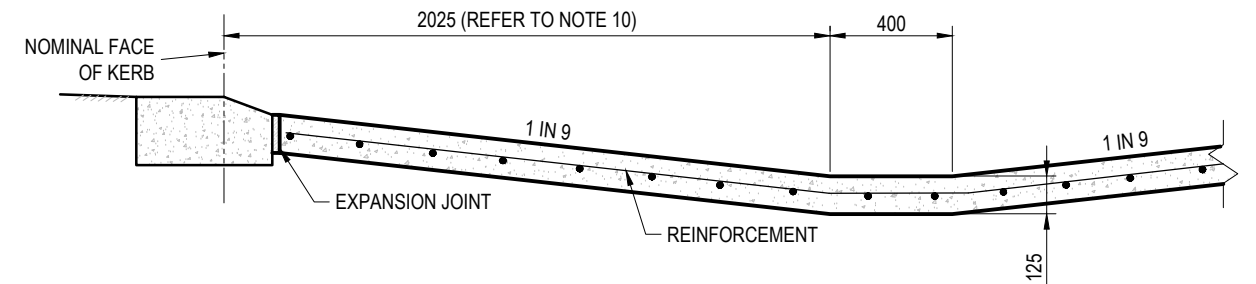
SECTION A-A
(FOR TYPE 'E' KERB AND CHANNEL)



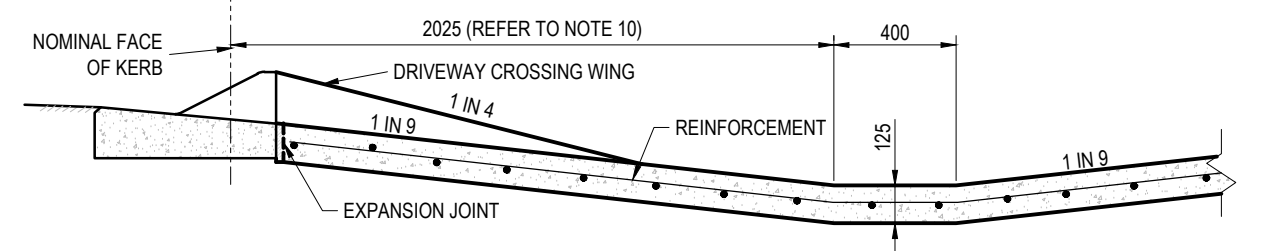
PERSPECTIVE VIEW
FOR TYPE 'E' KERB AND CHANNEL



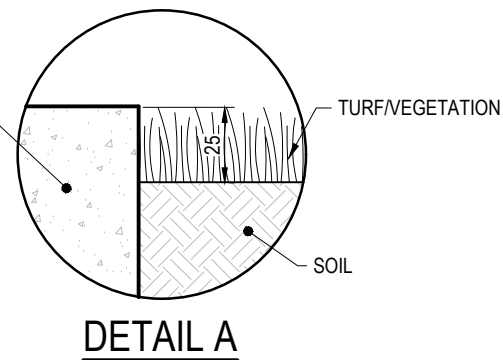
SECTION 'A'
(WITH TYPE 'E' KERB AND CHANNEL)



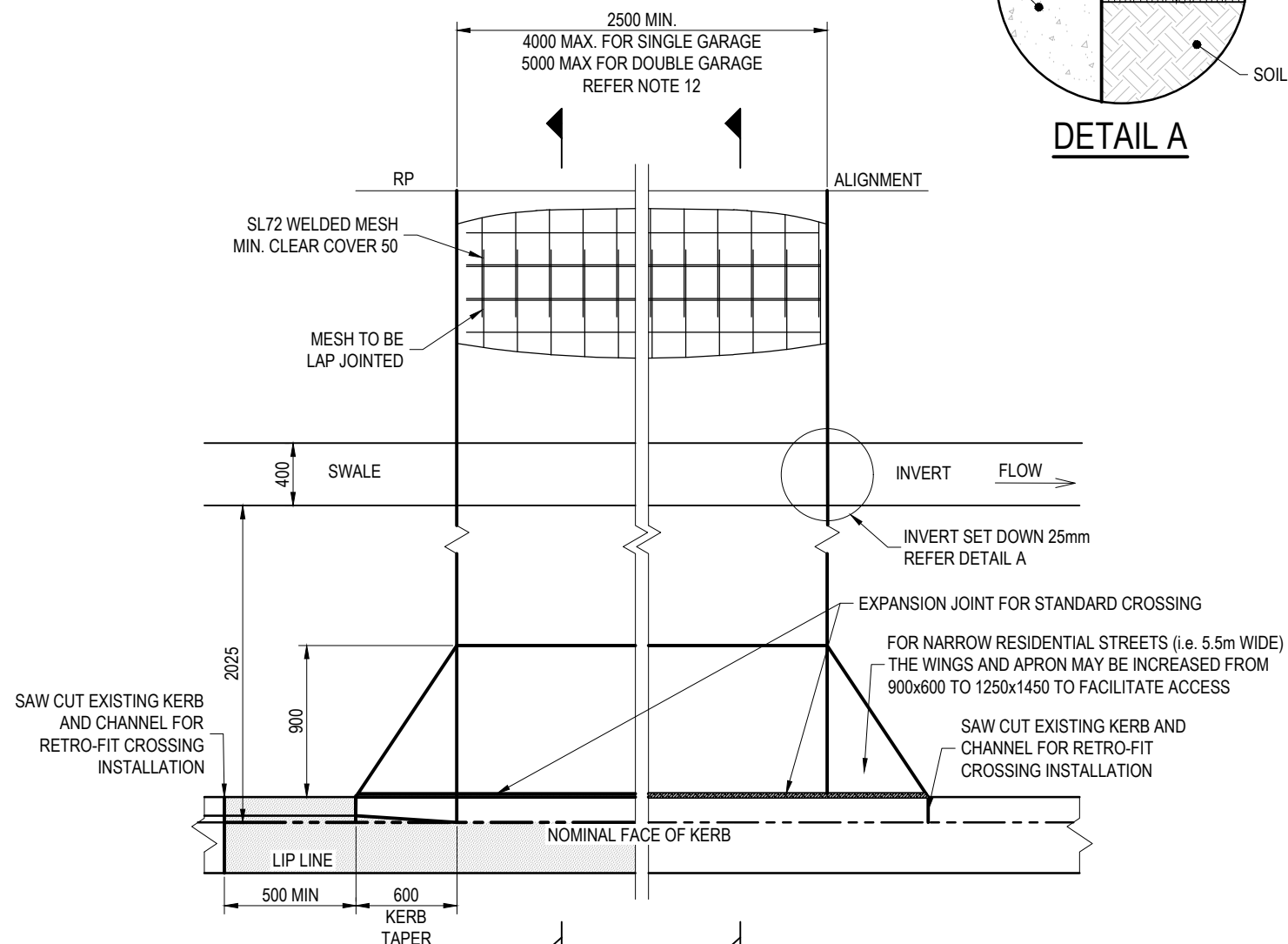
SECTION 'B'
(WITH TYPE 'G' KERB)



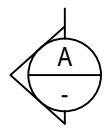
SECTION
(WITH TYPE 'D' KERB)



DETAIL A

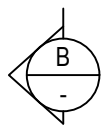


TYPE 'E' KERB
AND CHANNEL



PLAN

TYPE 'G' KERB



NOTES:

1. THE SPECIFIED PAVEMENT STANDARD DOES NOT APPLY TO POOR SUBGRADE. REFER SUPPLEMENTARY NOTES (BSD-0019) FOR DETAIL.
2. THIS CROSSING IS NOT FOR COMMERCIAL VEHICLES.
3. ALL CONCRETE TO BE GRADE N32 (MIN.).
4. ALL CONCRETE TO BE BROOM FINISHED. FOR SLIP RESISTANCE REQUIREMENTS. REFER REFERENCE SPECIFICATION FOR ENGINEERING WORKS 155 ROAD PAVEMENT MARKINGS.
5. EXPANSION JOINTS TO BE FULL DEPTH 10 THICK CLOSED CELL CROSS LINKED POLYETHYLENE FOAM (85-150kg/m³). SEAL SURFACE OF JOINT WITH A SUITABLE POLYURETHANE SEALANT.
6. THE THICKNESS OF DECORATIVE SURFACING, WHERE APPROVED, IS ADDITIONAL TO THE THICKNESS SHOWN.
7. PERMITS RELATING TO ROADS AND DRAINAGE MUST BE OBTAINED FROM COUNCIL (EITHER FROM REGIONAL BUSINESS CENTRES OR www.brisbane.qld.gov.au) TO SEEK APPROVAL OF LOCATION AND LEVELS PRIOR TO ANY EXCAVATION.
8. WHEN CROSSING IS RETRO-FITTED TO EXISTING KERB AND CHANNEL, THE EXISTING KERB AND CHANNEL IS TO BE REMOVED USING A SAW CUT AND NEW KERB AND CHANNEL CONSTRUCTED AS PART OF NEW CROSSING. REFER BSD-2001 FOR STANDARD KERB PROFILES.
9. FOR RETRO-FITTED CROSSINGS EXISTING ROAD PAVEMENT TO BE SAW CUT
10. DISTANCE FROM NOMINAL FACE OF KERB MAY VARY WITH SWALE WIDTH. GRADES ARE RECOMMENDED MAXIMUMS FOR VEHICLE ACCESS.
11. OFFSETS TO EXISTING STREET FURNITURE AND FEATURES SUCH AS STREET TREES, STORMWATER GULLIES, ELECTRICITY INFRASTRUCTURE AND TRAFFIC SIGNS AS PER BSD-2022.
12. NARROW LOT FRONTAGE CROSSOVER MAXIMUM WIDTHS
 - FRONTAGE ≥7.5m BUT <10m: 4.0m;
 - FRONTAGE <7.5m: 3.5m.
13. ON MINOR ROADS CROSSOVER TO BE A MINIMUM:
 - 10m FROM A MINOR INTERSECTION;
 - 20m FROM A MAJOR INTERSECTION.
14. REFER BSD-2001 FOR KERB AND CHANNEL PROFILES.
15. MAINTENANCE OF VEHICLE CROSSINGS (DRIVEWAYS) IS THE RESPONSIBILITY OF THE PROPERTY OWNER.
16. REDUNDANT VEHICLE CROSSINGS (DRIVEWAYS) ARE TO BE COMPLETELY REMOVED AND THE ADJACENT KERB AND CHANNEL AND VERGE IS TO BE REINSTATED TO MATCH EXISTING.
17. DIMENSIONS IN MILLIMETRES (U.N.O.).

THE FITNESS FOR PURPOSE OF THIS STANDARD DRAWING FOR A SPECIFIC PROJECT SHALL BE ASSESSED AND ACCEPTED BY A SUITABLY QUALIFIED REGISTERED PROFESSIONAL ENGINEER OF QUEENSLAND (RPEQ).



BRISBANE CITY COUNCIL STANDARD DRAWING

VEHICLE CROSSING (DRIVEWAY) -
SINGLE DWELLING -
GRASS VERGE SWALE

PUBLISH DATE		Mar '21
SCALE		NOT TO SCALE
DRAWING NUMBER		BSD-2028
ORIGINAL SIZE	REVISION	
A3	E	