

**GENERAL STREET NAME PLATE**



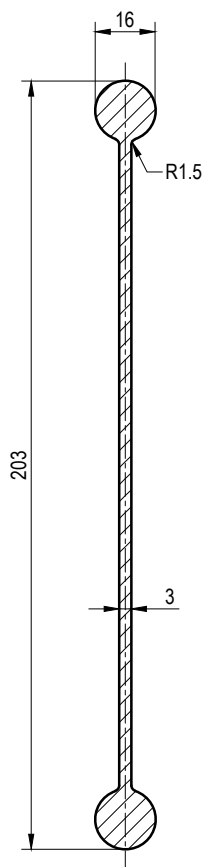
**PRIVATE ROAD STREET NAME PLATE**  
(COUNCIL LOGO, CLEAT AND STREET NAME LETTERING AS PER GENERAL STREET NAME PLATE DETAILS)

**NOTES:**

- WHERE BLADE LENGTH MAY EXCEED 1150mm, SERIES 'C' LETTERING MAY BE USED TO REDUCE CONGESTION ON THE SIGN.
- ALL SIGN LETTERING TO AS1744.
- 'PRIVATE ROAD' STREET NAME PLATE ONLY TO BE USED ON PRIVATE ROADS AS DEFINED IN THE CITY OF BRISBANE ACT 2010 AND APPROVED AS SUCH BY COUNCIL.
- REFER TO BRISBANE CITY COUNCIL REFERENCE SPECIFICATION FOR CIVIL ENGINEERING WORKS S154-TRAFFIC SIGNS AND ROADSIDE FURNITURE FOR:
  - SIGN BLADE MATERIAL;
  - REFLECTIVE SHEETING REQUIREMENTS; AND
  - SIGN BRACKET.
- HOUSE NO. RANGE:
  - IF SIGN ON ODD SIDE OF ROAD: ODD NUMBERS ONLY.
  - IF SIGN ON EVEN SIDE OF ROAD: EVEN NUMBERS ONLY.
- ALL DIMENSIONS IN MILLIMETRES (U.N.O.).

**LEGEND:**

- BLACK LETTERING (NON-REFLECTIVE)
- WHITE LETTERING (NON-REFLECTIVE)
- YELLOW LETTERING (NON-REFLECTIVE)
- WHITE CLASS 1W RETROREFLECTIVE BACKGROUND
- BLUE CLASS 1W RETROREFLECTIVE BACKGROUND
- CBD STREET SIGN - YELLOW CLEAT SECTION COLOUR: PMS YELLOW 116




**SIGN PLATE SECTION**



**CBD STREET NAME PLATE**  
(STREET NAME LETTERING AS PER GENERAL STREET NAME PLATE)

THE FITNESS FOR PURPOSE OF THIS STANDARD DRAWING FOR A SPECIFIC PROJECT SHALL BE ASSESSED AND ACCEPTED BY A SUITABLY QUALIFIED REGISTERED PROFESSIONAL ENGINEER OF QUEENSLAND (RPEQ).

	BRISBANE CITY COUNCIL STANDARD DRAWING		PUBLISH DATE	Mar '21
	STREET NAME PLATE SETOUT (SIGN CODE G5-2)		SCALE	N.T.S.
			DRAWING NUMBER	BSD-3102
	ORIGINAL SIZE	A3	REVISION	C