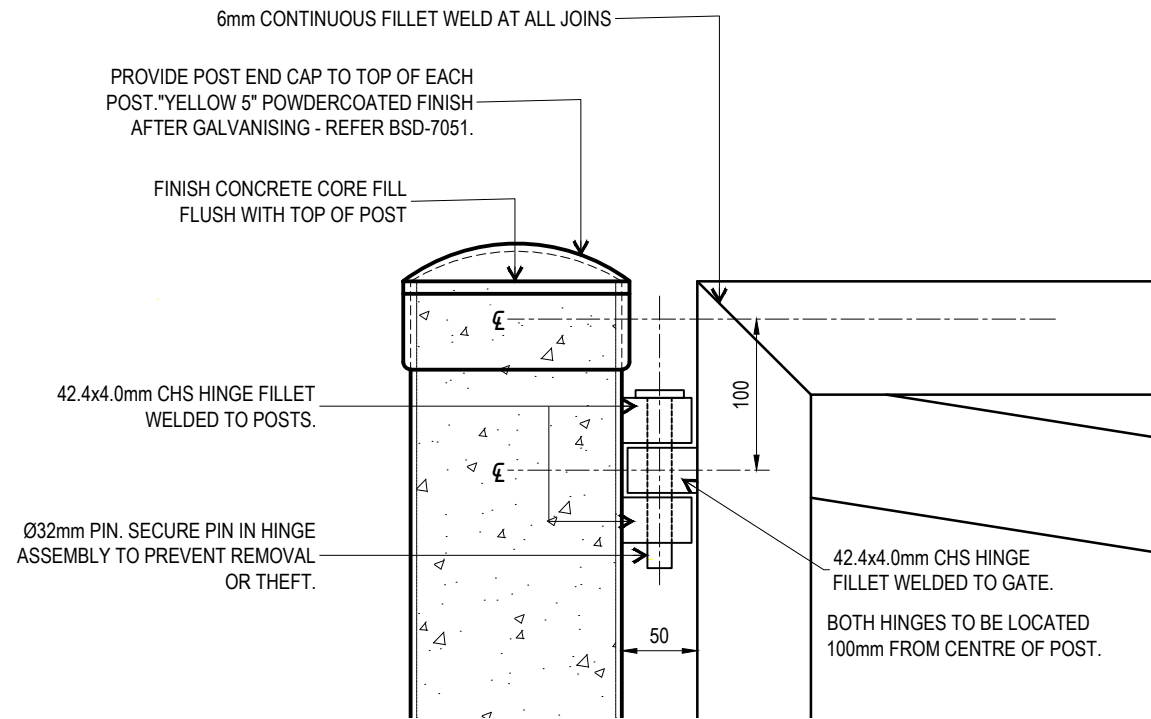


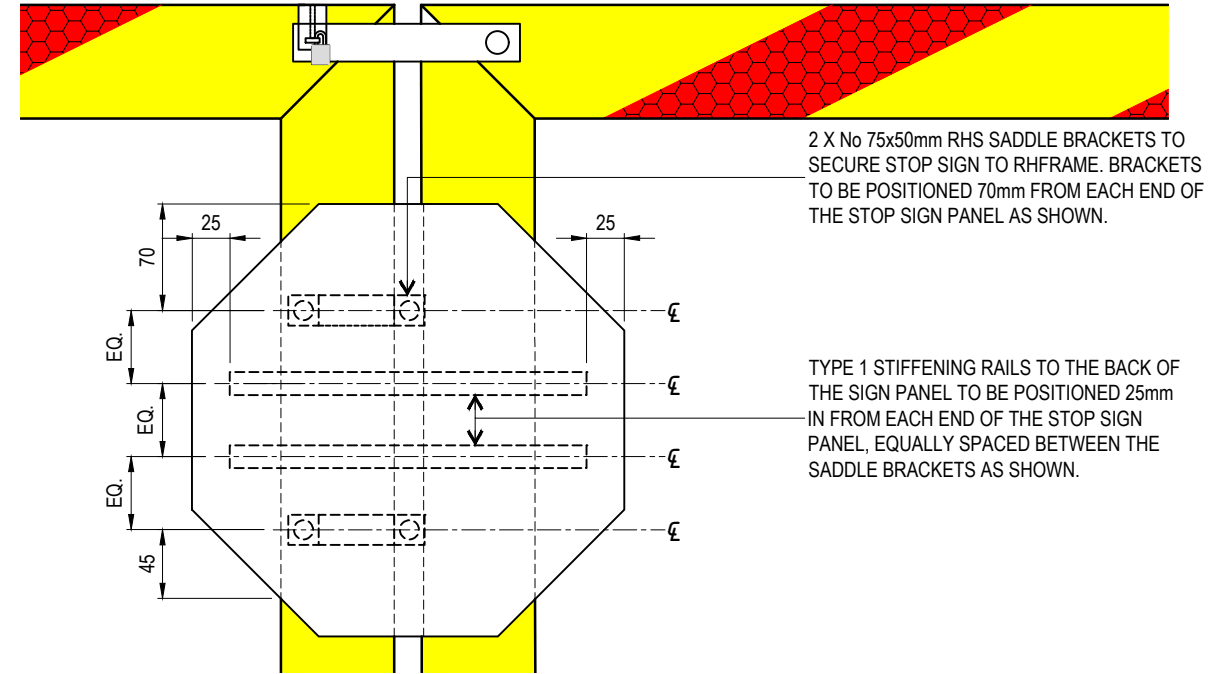
NOTE: PROVIDE FIXINGS OF A TYPE AND MATERIAL SUITABLE, SUFFICIENT AND MATCHING IN FINISH AND APPEARANCE TO THE COMPONENTS FASTENED, PROVIDE INSULATION BETWEEN DISSIMILAR MATERIALS, UNLESS SPECIFIED OTHERWISE. WHERE POSSIBLE ALL FIXINGS TO BE TAMPER / VANDAL PROOF TO MINIMISE THEFT OR DAMAGE. AS AN EXAMPLE: ONLY ONE SIGN IS SHOWN ATTACHED TO GATE FRAME.



STEEL LOCK GATE HINGE DETAIL

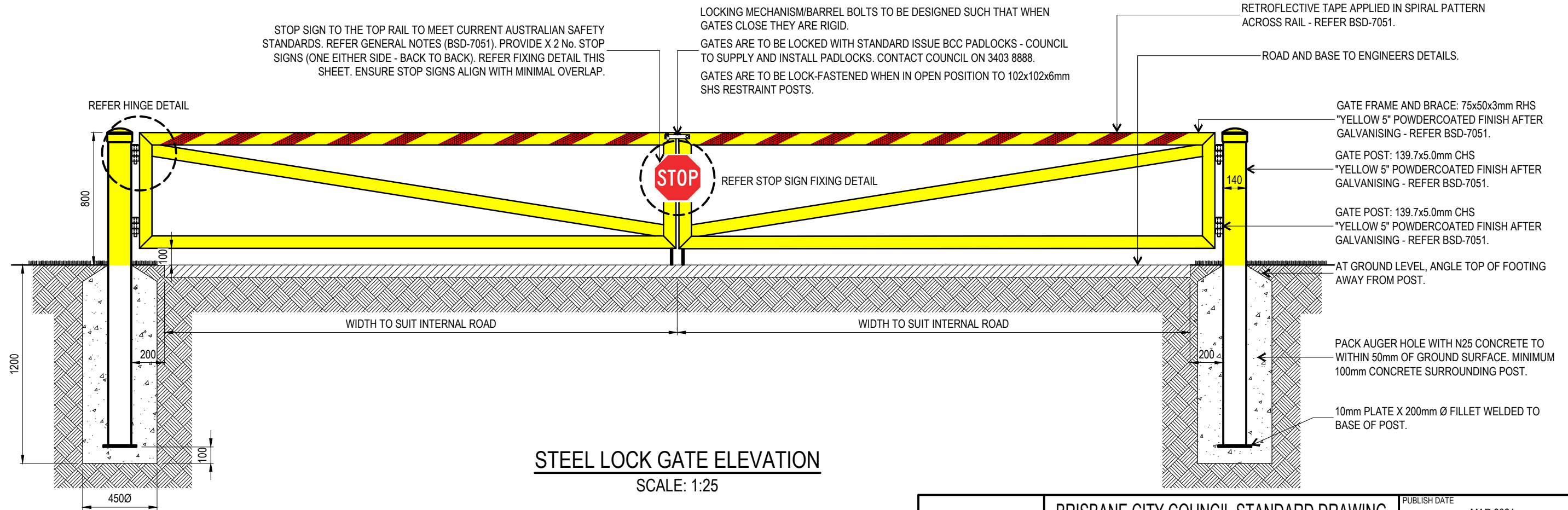
SCALE: 1:5

REFER TO BSD-7051 FOR ASSOCIATED SPECIFICATIONS.



STOP SIGN FIXING DETAIL


SCALE: 1:5



STEEL LOCK GATE ELEVATION

SCALE: 1:25

THE FITNESS FOR PURPOSE OF THIS STANDARD DRAWING FOR A SPECIFIC PROJECT SHALL BE ASSESSED AND ACCEPTED BY A SUITABLY QUALIFIED REGISTERED PROFESSIONAL ENGINEER OF QUEENSLAND (RPEQ).

	BRISBANE CITY COUNCIL STANDARD DRAWING		PUBLISH DATE	MAR 2021
	ENTRANCE BARRIER - DOUBLE SWING GATE		SCALE	AS SHOWN
			DRAWING NUMBER	BSD-7053
	ORIGINAL SIZE	A3	REVISION	B