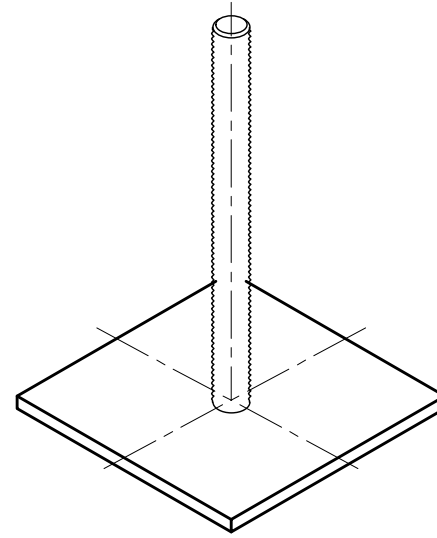
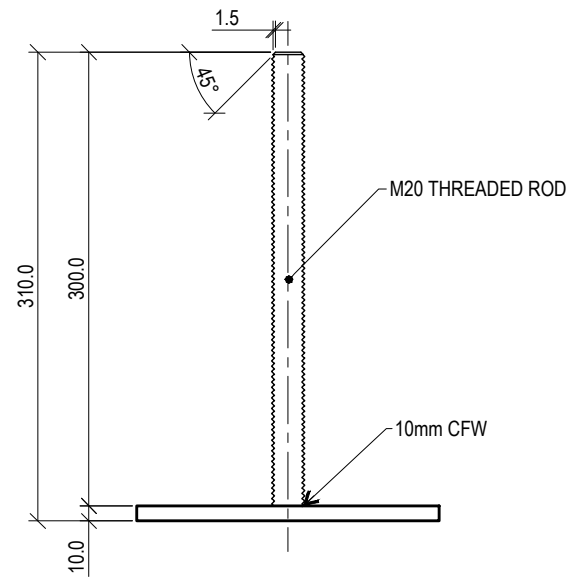


TOP VIEW



PICTORIAL VIEW



FRONT VIEW

STANDARDS

DESIGNED IN ACCORDANCE WITH, AND FABRICATION TO MEET THE FOLLOWING STANDARDS:

1. AS1627.4 METAL FINISHING -PREPARATION AND PRE-TREATMENT OF SURFACES - ABRASIVE BLAST CLEANING OF STEEL.
2. AS2312:2002/AMDT 1:2004, GUIDE TO PROTECTION OF IRON AND STEEL AGAINST EXTERIOR ATMOSPHERIC CORROSION, 1994.

NOTES

1. WELDING TO BE ACCORDANCE TO AS1554.1 CAT GP WELDING, ALL SHARP EDGES & BURRS REMOVED.
2. PART SHOULD BE SUPPLIED CLEAN AND FREE FROM MARKS, BURRS, SCUFFS, DISTORTION AND WARPAGE.
3. ENSURE ANTI-SEIZE IS ON ALL NUTS AND BOLTS PRIOR TO ASSEMBLY.
4. DRAWING TO AS1100 DRAWING STANDARDS.

MATERIAL

1. MATERIAL: 304 STAINLESS STEEL
2. COLOUR: NATURAL
3. FINISH: NATURAL

THE FITNESS FOR PURPOSE OF THIS STANDARD DRAWING FOR A SPECIFIC PROJECT SHALL BE ASSESSED AND ACCEPTED BY A SUITABLY QUALIFIED REGISTERED PROFESSIONAL ENGINEER OF QUEENSLAND (RPEQ).



BRISBANE CITY COUNCIL STANDARD DRAWING

URBAN STOOL
ANCHOR
SHEET 3 OF 5

| | | |
|----------------|----------|--------------|
| PUBLISH DATE | | March 2021 |
| SCALE | | NOT TO SCALE |
| DRAWING NUMBER | | BSD-7204 |
| ORIGINAL SIZE | REVISION | |
| A3 | E | |