

## STANDARDS

DESIGNED IN ACCORDANCE WITH, AND FABRICATION TO MEET THE FOLLOWING STANDARDS:

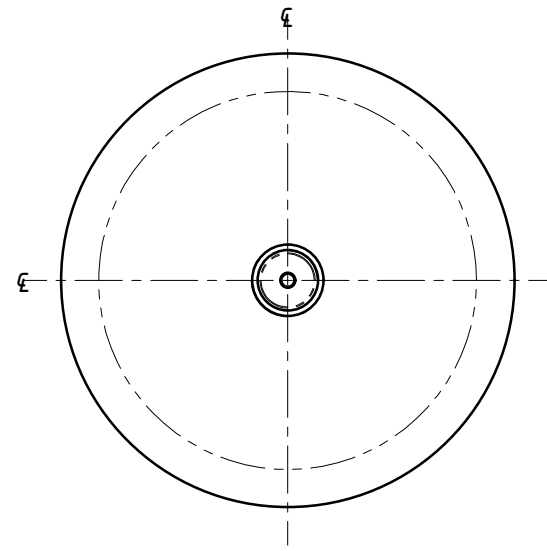
- AS1627.4 METAL FINISHING - PREPARATION AND PRE-TREATMENT OF SURFACES - ABRASIVE BLAST CLEANING OF STEEL.
- AS2312:2002/AMDT 1:2004, GUIDE TO PROTECTION OF IRON AND STEEL AGAINST EXTERIOR ATMOSPHERIC CORROSION, 1994.

## NOTES

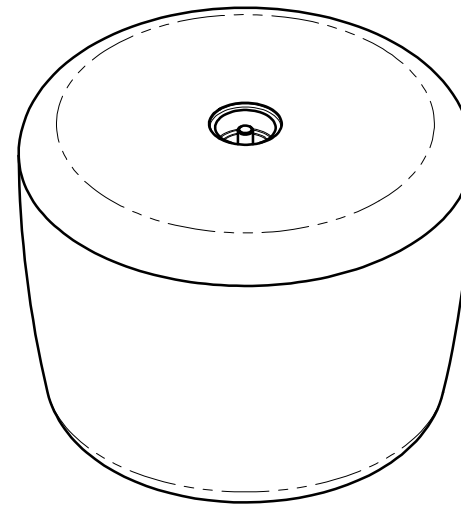
- WELDING TO BE ACCORDANCE TO AS1554.1 CAT GP WELDING, ALL SHARP EDGES & BURRS REMOVED.
- PART SHOULD BE SUPPLIED CLEAN AND FREE FROM MARKS, BURRS, SCUFFS, DISTORTION AND WARPAGE.
- ENSURE ANTI-SEIZE IS ON ALL NUTS AND BOLTS PRIOR TO ASSEMBLY.
- DRAWING TO AS1100 DRAWING STANDARDS.

## MATERIAL

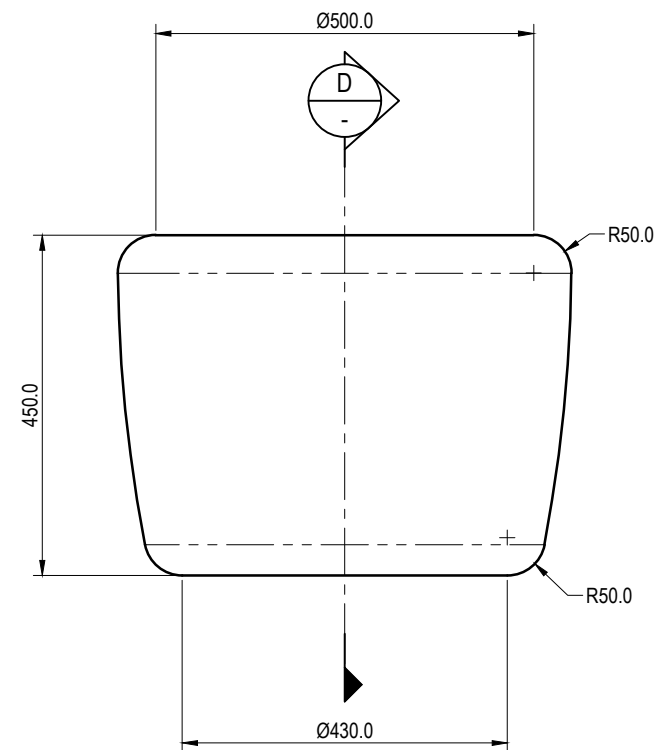
- MATERIAL: PRECAST CONCRETE
- COLOUR: VARIES - TBC ON ORDER
- FINISH: CLASS 1 CONCRETE FINISH



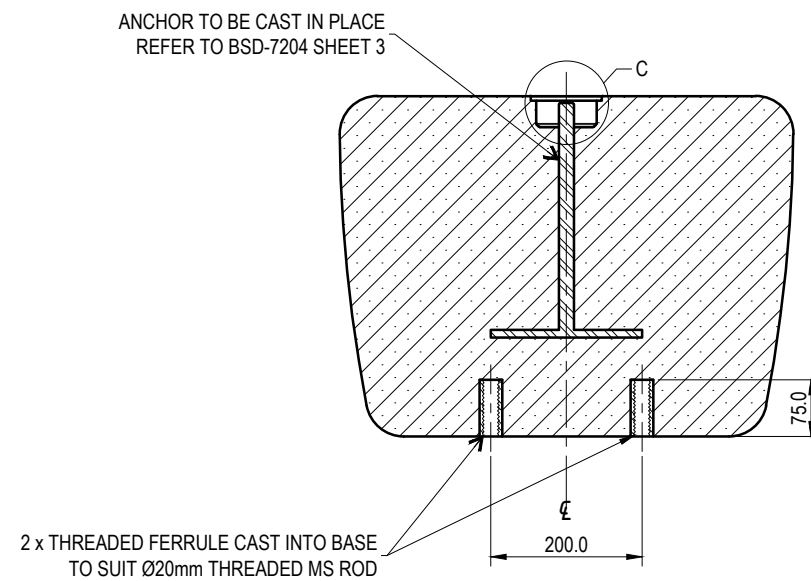
TOP VIEW



PICTORIAL VIEW

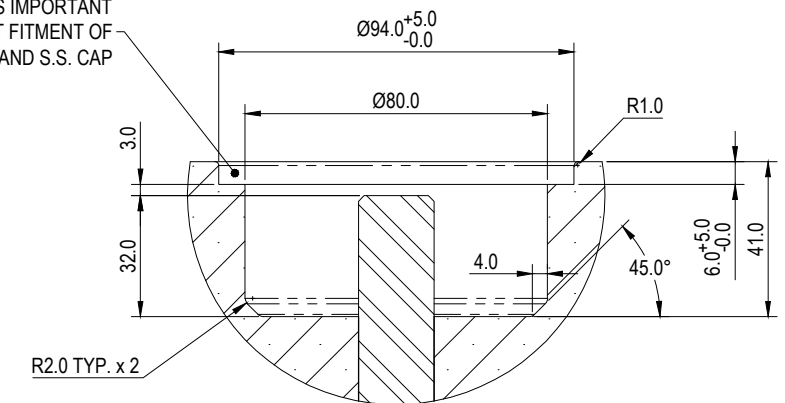


FRONT VIEW



SECTION D-D

REBATE ACCURACY IS IMPORTANT TO ENSURE CORRECT FITMENT OF LIFTING LUG AND S.S. CAP



DETAIL C  
REBATE DETAIL  
SCALE 1 : 2

THE FITNESS FOR PURPOSE OF THIS STANDARD DRAWING FOR A SPECIFIC PROJECT SHALL BE ASSESSED AND ACCEPTED BY A SUITABLY QUALIFIED REGISTERED PROFESSIONAL ENGINEER OF QUEENSLAND (RPEQ).



BRISBANE CITY COUNCIL STANDARD DRAWING

URBAN STOOL  
SHEET 1 OF 5

PUBLISH DATE		March 2021
SCALE		NOT TO SCALE
DRAWING NUMBER		BSD-7204
ORIGINAL SIZE	REVISION	
A3	E	