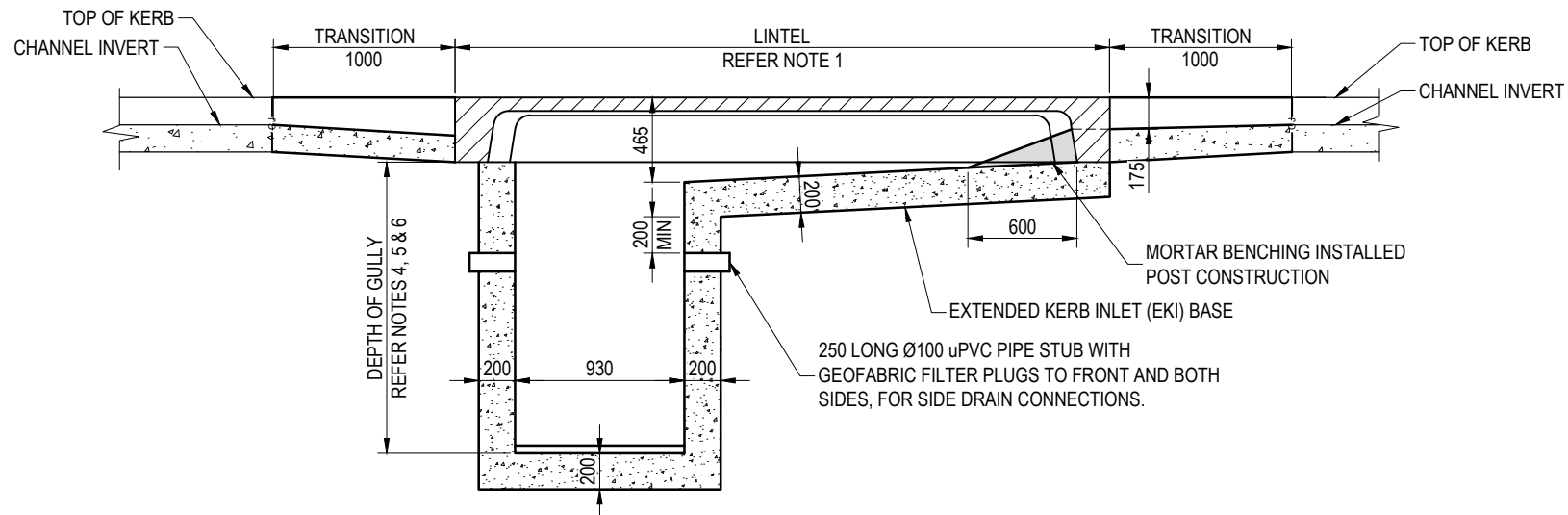
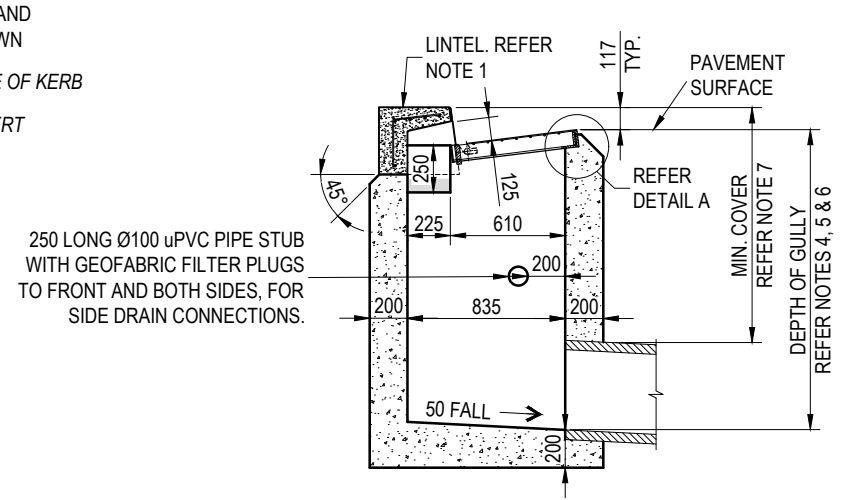


TYPICAL INLET ON GRADE - PLAN

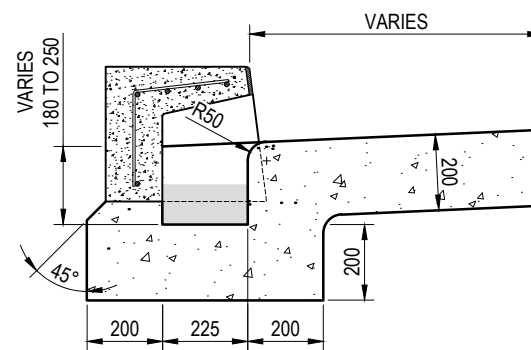
NOTE: FOR SAG GULLY, APRON TO EXTEND TO END OF LINTEL AND GULLY TO BE LOCATED IN CENTRE OF LINTEL.



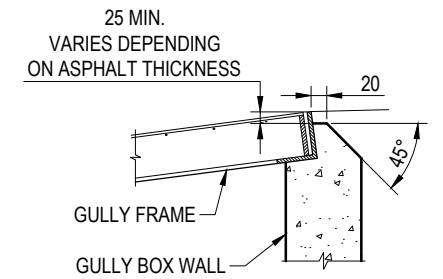
TYPICAL INLET ON GRADE SECTION A-A



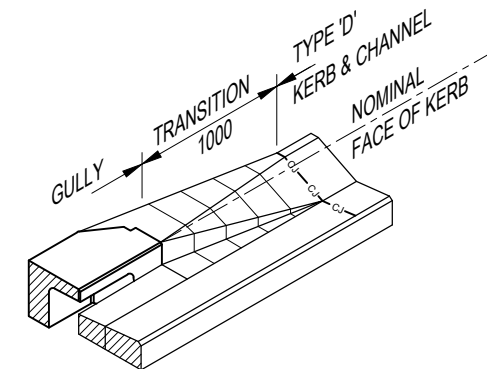
SECTION B-B



SECTION C-C



DETAIL A




TRANSITION TO KERB & CHANNEL

(TYPE 'D' KERB & CHANNEL SHOWN)

NOTES:

1. REFER BSD-8055 FOR LINTEL DETAILS.
2. CAST INSITU CONCRETE N32 TO AS1379 AND AS3600.
3. REFER BSD-8053 & BSD-8054 FOR GULLY GRATE AND FRAME DETAILS.
4. LIMIT DEPTH OF STANDARD GULLY TO 1.80m.
5. STANDARD GULLIES BETWEEN 1.8 AND 3.0m ARE PERMITTED ONLY WITH THE PRIOR APPROVAL OF COUNCIL,
6. GULLIES DEEPER THAN 3.0m TO BE INDIVIDUALLY DESIGNED UNDER THE DIRECTION OF A SUITABLY QUALIFIED REGISTERED PROFESSIONAL ENGINEER OF QUEENSLAND (RPEQ).
7. INSTALL STEP IRONS TO GULLIES GREATER THAN 1.20m DEEP IN ACCORDANCE WITH AS1657.
8. REFER TO BSD-2042 (ROADWAYS) AND BSD-2043 (PATHS AND VERGES) FOR MINIMUM COVER REQUIREMENTS. MIN. 450mm IN OTHER AREAS.
9. DIMENSIONS IN MILLIMETRES (U.N.O.).

THE FITNESS FOR PURPOSE OF THIS STANDARD DRAWING FOR A SPECIFIC PROJECT SHALL BE ASSESSED AND ACCEPTED BY A SUITABLY QUALIFIED REGISTERED PROFESSIONAL ENGINEER OF QUEENSLAND (RPEQ).

	BRISBANE CITY COUNCIL STANDARD DRAWING		PUBLISH DATE	March 2021
	<p style="text-align: center;">TYPE 'A' GULLY KERB IN LINE</p>		SCALE	NOT TO SCALE
			DRAWING NUMBER	BSD-8052
	ORIGINAL SIZE	A3	REVISION	D