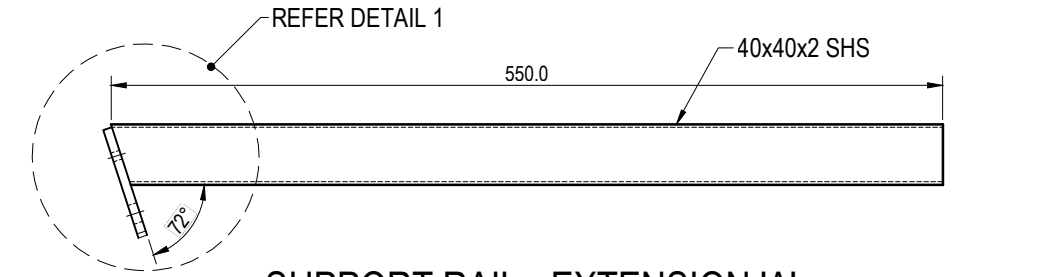


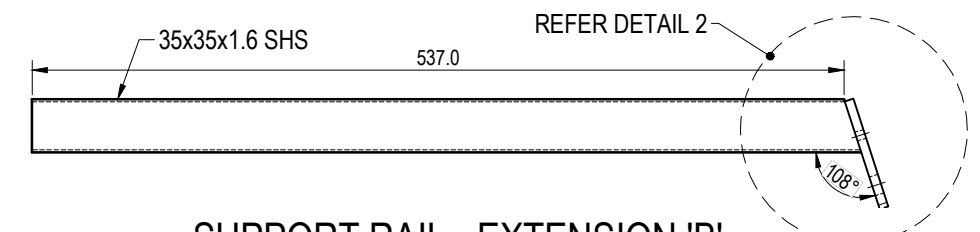
GULLY BASKET INSTALLATION
STANDARD TYPE 'A' GULLY

NOTES:

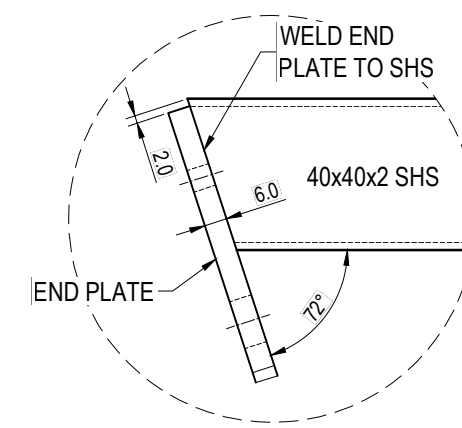
1. SUPPORT RAIL MATERIAL TO MATCH BASKET MATERIAL.
2. MATERIAL:
 - EXTENSION 'A': 40x40x2 SHS.
 - EXTENSION 'B': 35x35x1.6 SHS.
3. ALL WELDS TO BE 4mm CFW UNLESS NOTED OTHERWISE.
4. HOT DIP GALVANISE SUPPORT RAILS (EXTENSIONS) TO AS/NZS4680 AFTER FABRICATION.
5. AFTER GALVANISING, ENSURE EXTENSION 'B' IS ABLE TO BE INSERTED INTO EXTENSION 'A'.
6. 2 PAIRS REQUIRED FOR EACH GULLY BASKET.
7. ALL SHARP EDGES ARE TO BE REMOVED. THIS IS TO OCCUR PRIOR TO GALVANISING FOR BASKETS FABRICATED FROM MILD STEEL.
8. ALL DIMENSIONS IN MILLIMETRES (U.N.O.).



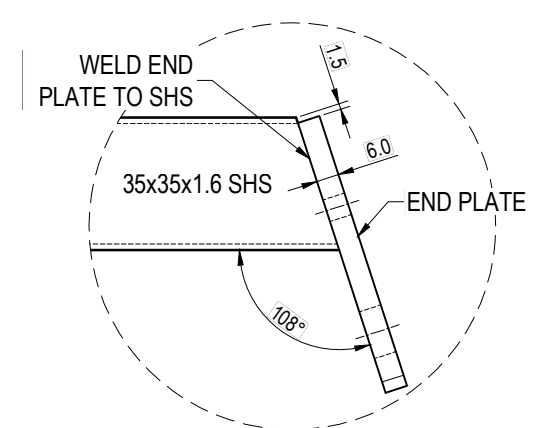
SUPPORT RAIL - EXTENSION 'A'



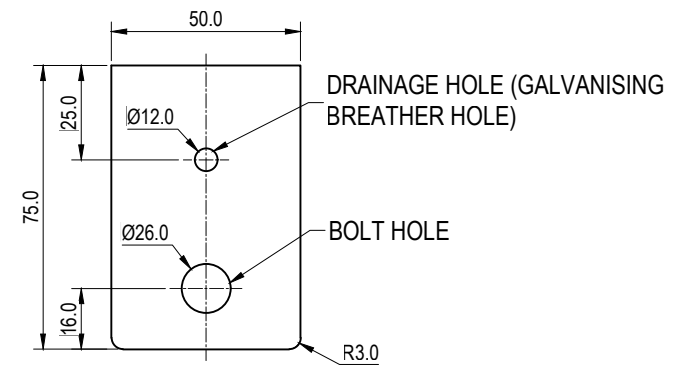
SUPPORT RAIL - EXTENSION 'B'



EXTENSION 'A' DETAIL 1



EXTENSION 'B' DETAIL 2



SUPPORT RAIL END PLATE
6mm THICK

THE FITNESS FOR PURPOSE OF THIS STANDARD DRAWING FOR A SPECIFIC PROJECT SHALL BE ASSESSED AND ACCEPTED BY A SUITABLY QUALIFIED REGISTERED PROFESSIONAL ENGINEER OF QUEENSLAND (RPEQ).

	BRISBANE CITY COUNCIL STANDARD DRAWING		PUBLISH DATE AUG 2021	
	STEEL GULLY BASKET SUPPORT RAILS (EXTENSIONS) AND INSTALLATION DETAILS - SHEET 6 OF 6		SCALE NOT TO SCALE	
			DRAWING NUMBER BSD-8060	
			ORIGINAL SIZE A3	REVISION A